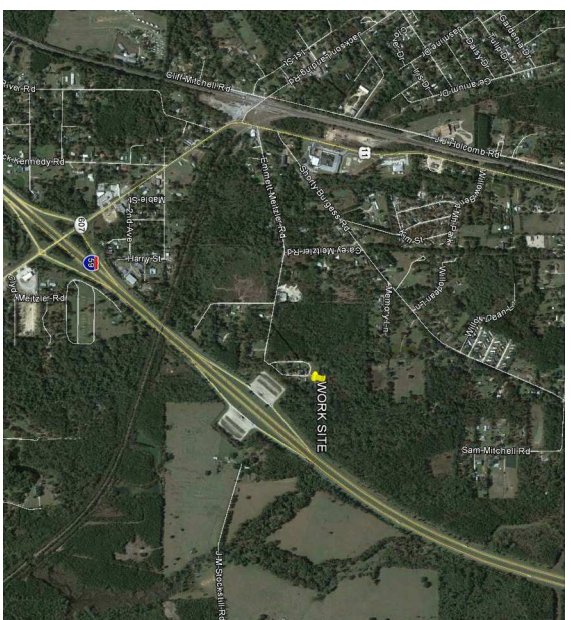


OVERALL SITE PLAN
SCALE: 1"=100'



VICINITY MAP
N.T.S.

INDEX OF DRAWINGS			
SHT#	DWG#	DRAWING NAME	REVISED
1	C-1	OVERALL SITE PLAN	
2	C-2	SEWER DISTRIBUTION PLAN	
3	C-2A	SEWER LIFT STATION	
4	C-3	WATER DISTRIBUTION PLAN	

EXISTING TRAILER PARK 3.4 ACRE
(ADDITION OF SEWER PUMP STATION/
FORCE MAIN & POTABLE WATER
TO CONNECT WITH NICHOLSON WATER &
SEWER ASSOCIATION, INC.)

OVERALL
SITE
PLAN

SHEET NO: 01 OF 04

C1

**DREAMLAND
MOBILE HOME PARK**
ALLIE ESSENCE LANE
NICHOLSON, MISSISSIPPI

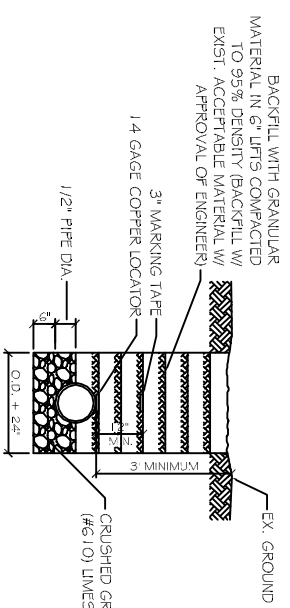
JOB NO: 2182 DATE: 05-19-2014
DRAWN BY: CKD CHECKED BY: BM



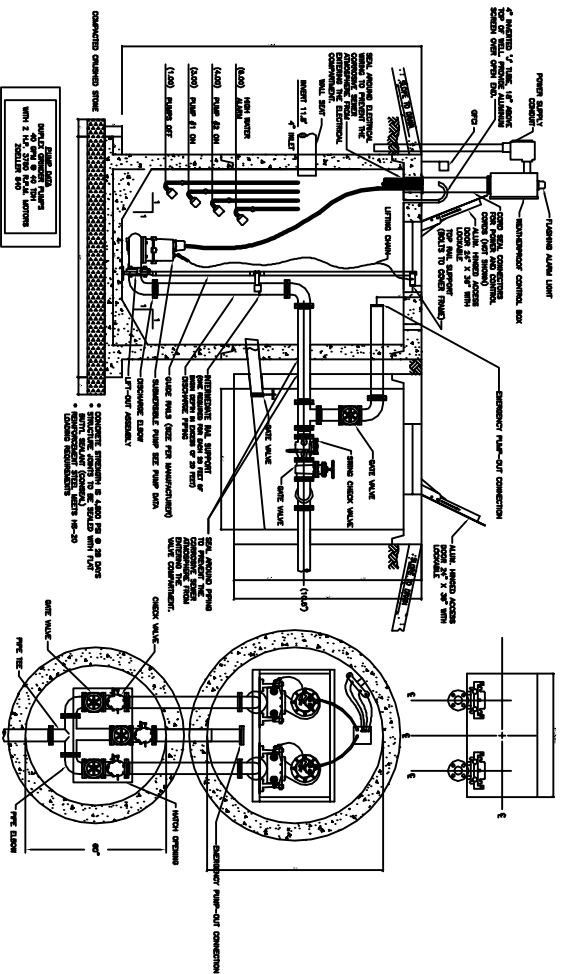
**DAMMON
ENGINEERING, INC.**
Architects & Engineers

CHIEF ENGINEER: BRIAN MISTCH, P.E.
CHIEF ARCHITECT: KEVIN KINCHEN
354 OLD SPANISH TRAIL
SLIDELL, LA 70459

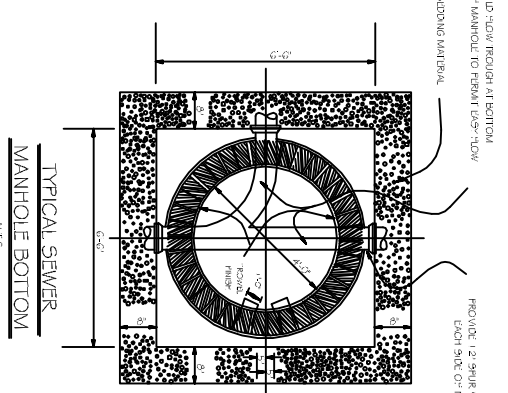
dammonengineering.com
dammon@bellsouth.net
PHONE: 985-641-5832
FAX: 985-641-5950



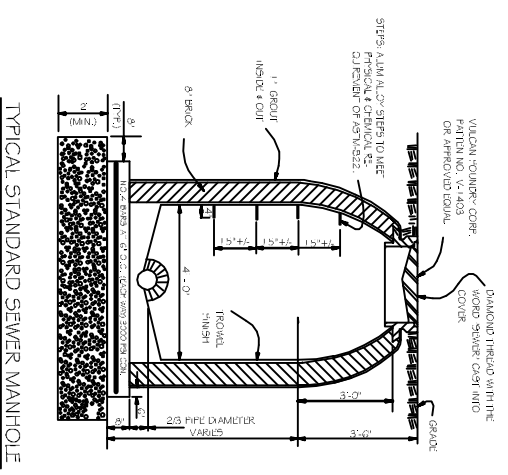
PIPE MAIN BEDDING DETAIL FOR SEWER AND WATER
SCALE: N.T.S.



DUPLICEX LIFT STATION DETAIL
NOT TO SCALE



TYPICAL SEWER MANHOLE BOTTOM
N.T.S.



TYPICAL STANDARD SEWER MANHOLE
N.T.S.

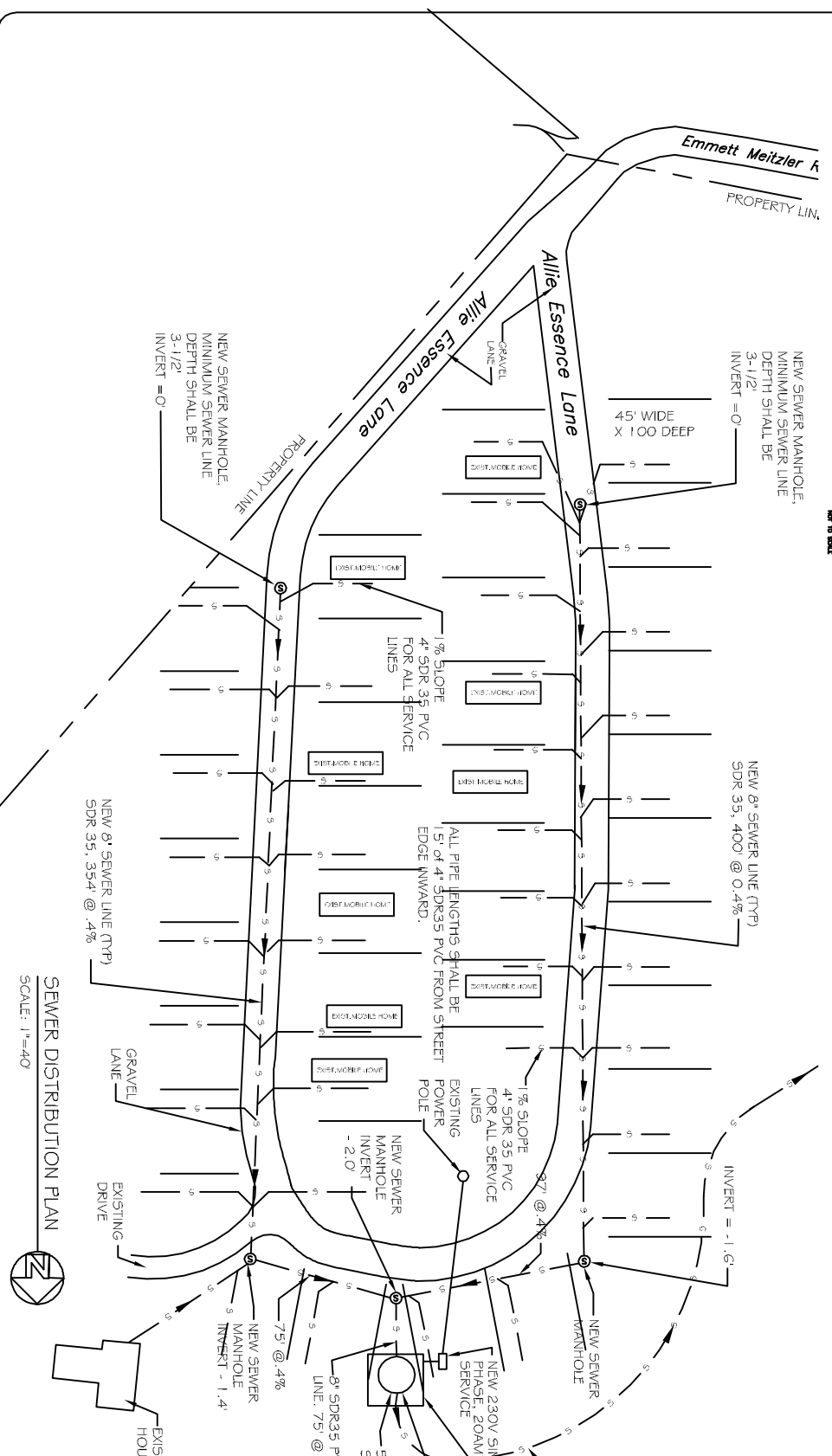
EXISTING TRAILER PARK 3.4 ACRE
(ADDITION OF SEWER PUMP STATION/
FORCE MAIN & POTABLE WATER
TO CONNECT WITH NICHOLSON WATER &
SEWER ASSOCIATION, INC.)

- NOTE:**
- 1) OWNER SHALL IDENTIFY ALL TRAILER SPACING FOR CONTRACTOR TO LAYOUT SEWER WORK.
 - 2) ALL PIPE LENGTHS SHALL BE 15' OF 4" SDR35 PVC FROM STREET EDGE INWARD.

GENERAL NOTES:

1. PROVIDE ALL LABOR, MATERIAL AND EQUIPMENT FOR A COMPLETE OPERATING SYSTEM.
2. ALL WORK AND MATERIAL SHALL CONFORM STRICTLY TO THE LATEST LOCAL, CITY, COUNTY, STATE AND NATIONAL GOVERNING CODES.
3. CONTRACTOR IS TO FIELD VERIFY ALL EXISTING UTILITY LOCATIONS, ELEVATIONS AND SIZES PRIOR TO COMMENCING ANY WORK. CONTRACTOR SHALL PAY NECESSARY FEES FOR THE UTILITIES CONNECTIONS.
4. CONTRACTOR IS RESPONSIBLE TO SET NEW INVERTS OF SEWERAGE PIPES.
5. TEST ALL PIPING AT REQUIRED PRESSURE.
6. ALL PUMPING SHALL BE CLOSELY COORDINATED WITH WATER SYSTEM.
7. ALL PUMPING SHALL BE CLOSELY COORDINATED WITH WATER SYSTEM.
8. ALL PUMPING SHALL BE CLOSELY COORDINATED WITH WATER SYSTEM.
9. ALL PUMPING SHALL BE CLOSELY COORDINATED WITH WATER SYSTEM.
10. MINIMUM PIPE BURIAL SHALL BE 3'-0"

NOTE:
ALL EXISTING SEPTIC TANKS SHALL BE CRUSHED AND FILLED IN.



SEWER DISTRIBUTION PLAN
SCALE: 1"=40'

REVISIONS	
#	DESCRIPTION

DREAMLAND MOBILE HOME PARK
ALLIE ESSENCE LANE
NICHOLSON, MISSISSIPPI

JOB No: 2182 DATE: 05-19-2014
DRAWN BY: CKD CHECKED BY: BM

DAMMON ENGINEERING, INC.
Architects & Engineers

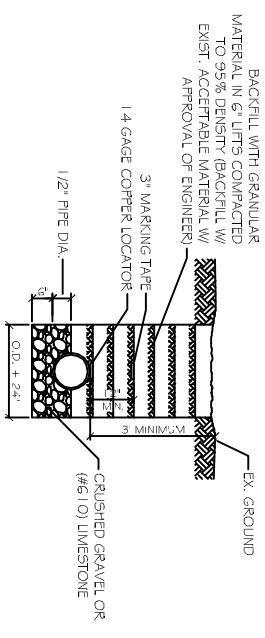
CHIEF ENGINEER: BRIAN MISTICH, PE
CHIEF ARCHITECT: KEVIN KINCHEN
554 OLD SPANISH TRAIL
SLIDELL, LA 70458

dammonengineering.com
dammon@dammoneng.com
PHONE: 985-649-5832
FAX: 985-649-1411

SEWER DISTRIBUTION PLAN

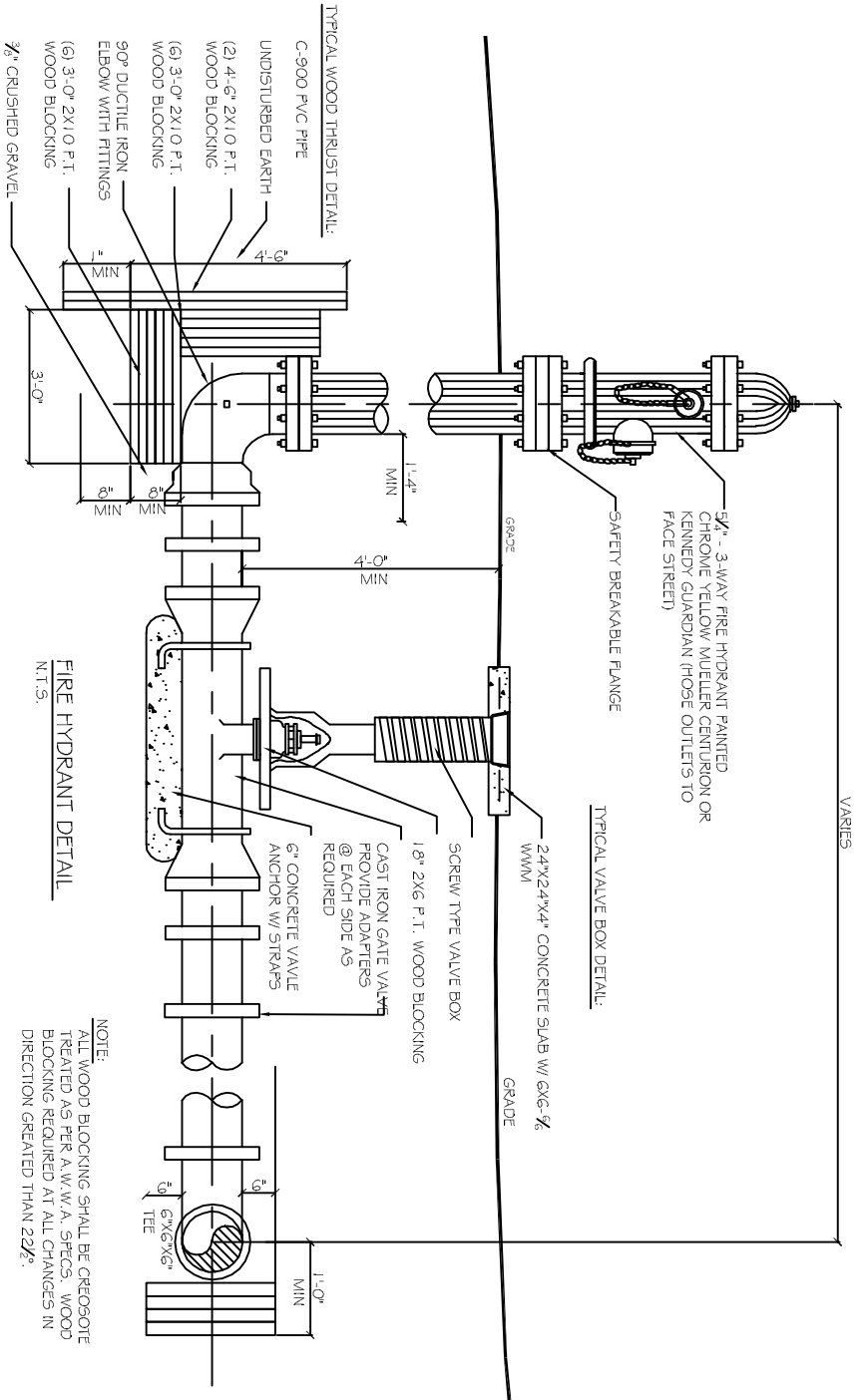
SHEET NO: 02 OF 04

C2



NOTE: A MINIMUM 1'-0\"/>

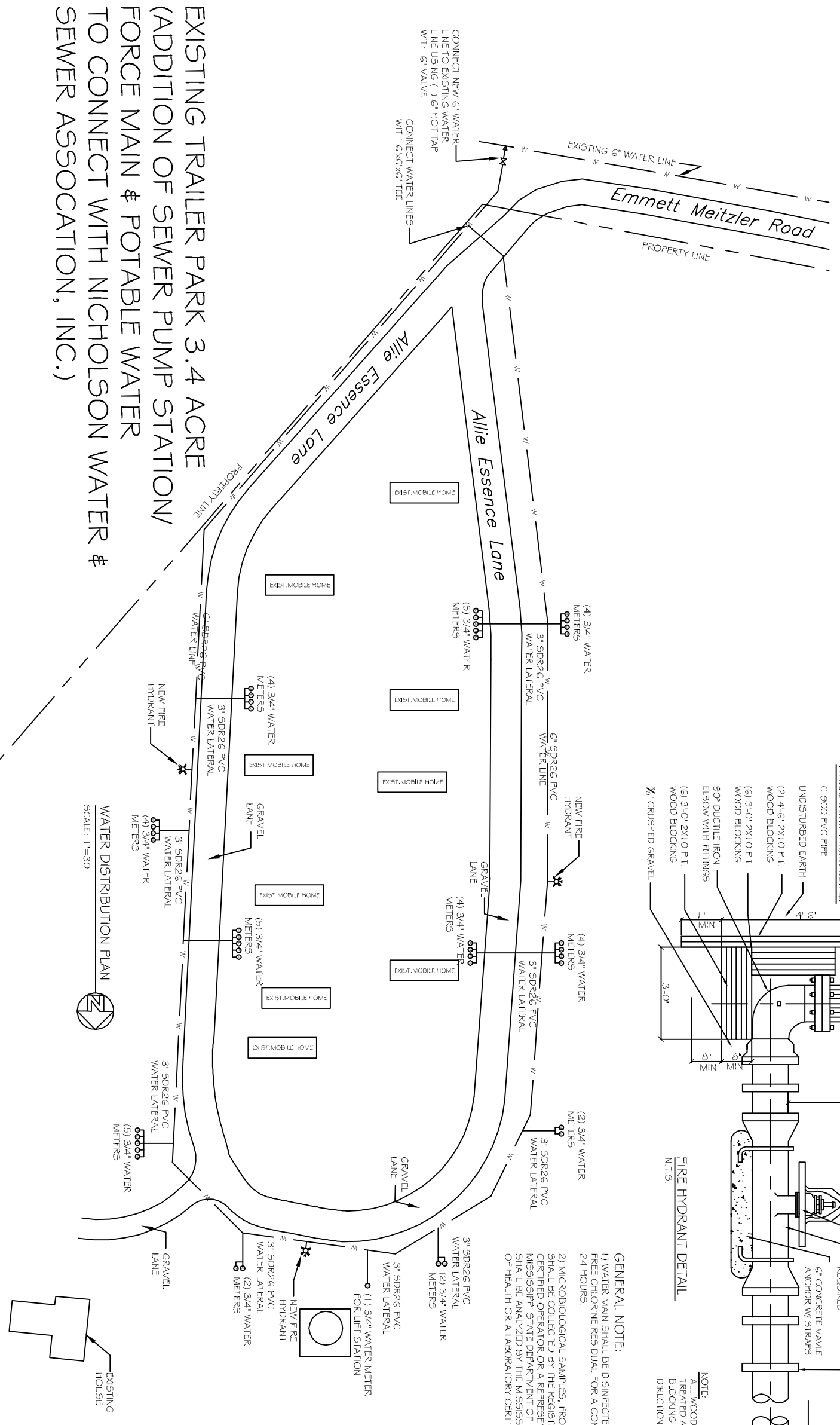
PIPE MAIN BEDDING DETAIL FOR SEWER AND WATER
SCALE: N.T.S.



FIRE HYDRANT DETAIL
N.T.S.

NOTE:
ALL WOOD BLOCKING SHALL BE CREOSOTE TREATED AS PER A.W.W.A. SPECS. WOOD BLOCKING REQUIRED AT ALL CHANGES IN DIRECTION GREATER THAN 22 $^{\circ}$.

GENERAL NOTE:
1) WATER MAIN SHALL BE DISINFECTED USING A 50MG/L FREE CHLORINE RESIDUAL FOR A CONTACT TIME FOR 24 HOURS.
2) MICROBIOLOGICAL SAMPLES, FROM THE WATER MAINS SHALL BE COLLECTED BY THE REGISTERED ENGINEER, CERTIFIED OPERATOR OR A REPRESENTATIVE OF THE MISSISSIPPI STATE DEPARTMENT OF HEALTH. THE SAMPLES SHALL BE ANALYZED BY THE MISSISSIPPI STATE DEPARTMENT OF HEALTH OR A LABORATORY CERTIFIED BY THE STATE.



EXISTING TRAILER PARK 3.4 ACRE
(ADDITION OF SEWER PUMP STATION/
FORCE MAIN & POTABLE WATER
TO CONNECT WITH NICHOLSON WATER &
SEWER ASSOCIATION, INC.)

WATER DISTRIBUTION PLAN
SCALE: 1"=30'

REVISIONS	
#	DESCRIPTION

DREAMLAND MOBILE HOME PARK
ALLIE ESSENCE LANE
NICHOLSON, MISSISSIPPI

JOB No: 2182 DATE: 05-19-2014
DRAWN BY: CKD CHECKED BY: BM

DAMMON ENGINEERING, INC.
Architects & Engineers

CHIEF ENGINEER: BRIAN MISTICH, P.E.
CHIEF ARCHITECT: KEVIN KINCHEN

dammonengineering.com
dammoneng@bellsouth.net
PHONE: 985-644-5832
FAX: 985-641-5830