

**SITE PLAN**

#	DESCRIPTION	DATE
1	VACUUM LOCATION	4-29-15

**RAINFOREST CARWASH #2**  
6485 U.S. HWY. 49

HATTIESBURG, MISSISSIPPI 39401

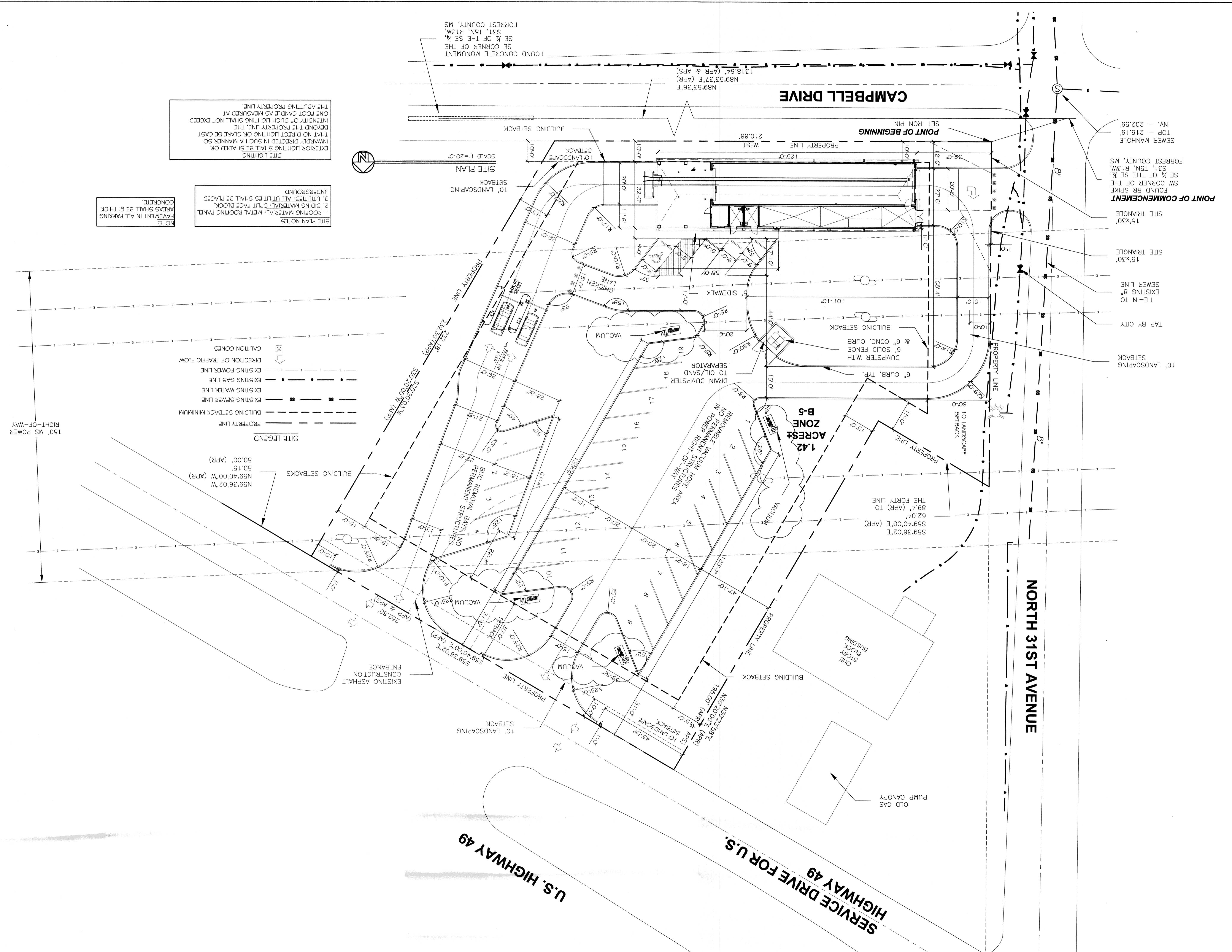
JOB No. 2212 DATE: 10-21-2014  
DRAWN BY: CKD CHECKED BY: CKD

**DAMMON**  
ENGINEERING & ARCHITECTS

Architects & Engineers

Chief Engineer: Brian Mistich, P.E.  
554 OLD SPANISH TRAIL  
SUDDLE, LA 70458

dammongenr.com  
brianmistich@dammoneng.com  
PHONE: 985-649-5632  
FAX: 985-641-5950



**SITE LIGHTING**  
EXTERIOR LIGHTING SHALL BE SHADED OR INWARDLY DIRECTED IN SUCH A MANNER SO THAT NO DIRECT LIGHTING OR GLARE BE CAST BEYOND THE PROPERTY LINE. THE INTENSITY OF SUCH LIGHTING SHALL NOT EXCEED ONE FOOT CANDLE AS MEASURED AT THE ADJUTING PROPERTY LINE.

**SITE PLAN NOTES**  
1. ROOFING MATERIAL: METAL ROOFING PANEL  
2. SIDING MATERIAL: SPILT FACE BLOCK  
3. UTILITIES: ALL UTILITIES SHALL BE PLACED UNDERGROUND

**NOTE:**  
PAVEMENT IN ALL PARKING AREAS SHALL BE 6" THICK CONCRETE.

**SITE LEGEND**

- PROPERTY LINE
- BUILDING SETBACK MINIMUM
- EXISTING SEWER LINE
- EXISTING WATER LINE
- EXISTING GAS LINE
- EXISTING POWER LINE
- DIRECTION OF TRAFFIC FLOW
- CAUTION CONES

**BUILDING SETBACKS**  
NS9.36.02'W  
NS9.40.00'W (APR)  
50.15'  
50.00' (APR)

**POINT OF COMMENCEMENT**  
FOUND RR SPIKE  
SE 1/4 OF THE SE 1/4  
S31, T5N, R13W,  
FORREST COUNTY, MS  
TOP = 216.19'  
INV. = 202.59'

10' LANDSCAPING SETBACK  
TAP BY CITY  
EXISTING 8" TIE-IN TO SEWER LINE  
15' X30' SITE TRIANGLE  
15' X30' SITE TRIANGLE

**NORTH 31ST AVENUE**

**SERVICE DRIVE FOR U.S. HIGHWAY 49**

**U.S. HIGHWAY 49**