

A101

DRAWING NUMBER:

FLOOR PLAN

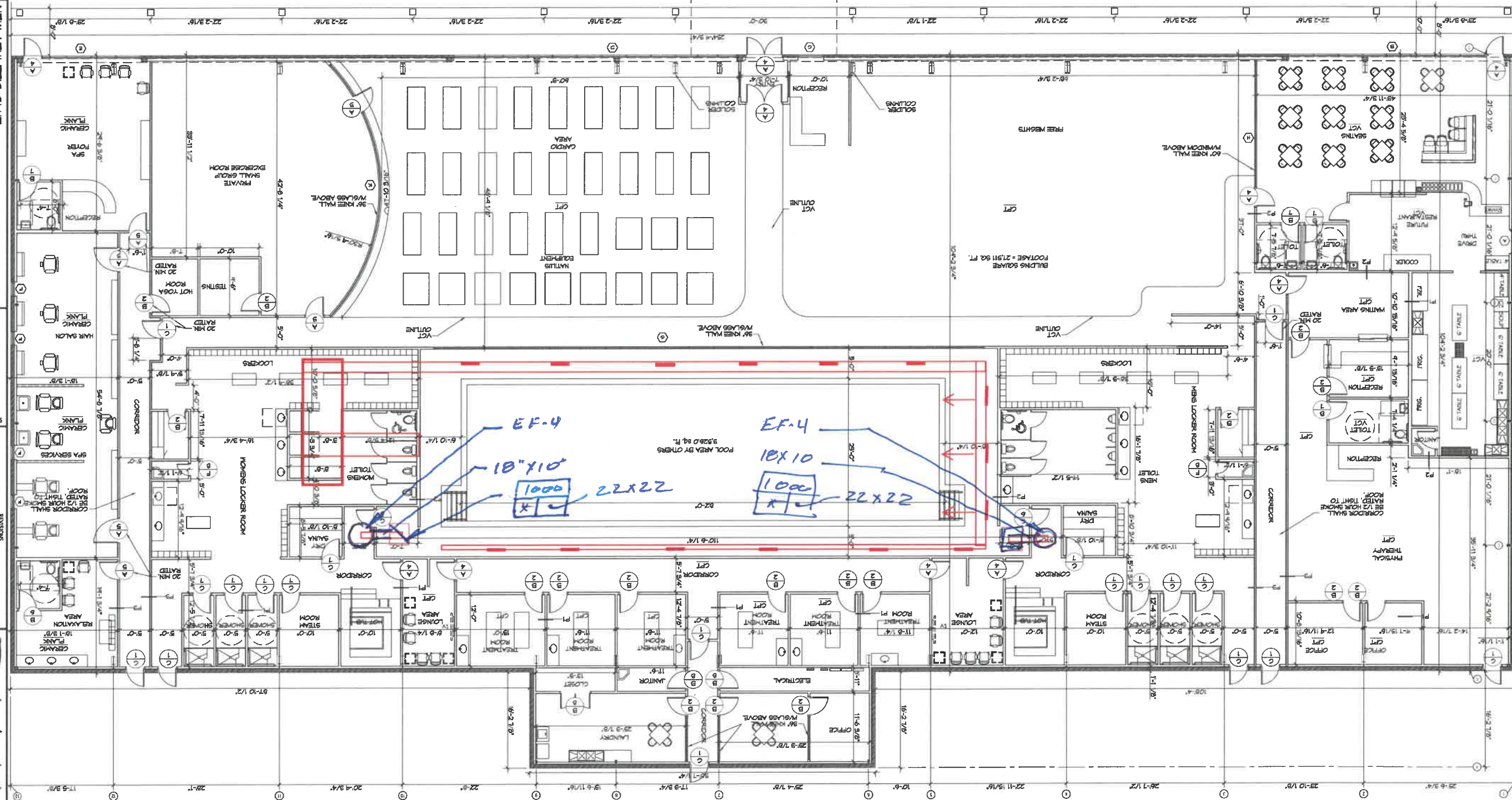
NEW ATHLETIC CLUB  
PRESTIGE FITNESS  
CLUB AND SPA

4423 KALANI DRIVE  
HAWKOCK COUNTY, MISSISSIPPI  
JOB NO: 2304 DATE: DECEMBER 09, 2011  
DRAWN BY: CJO CHECKED BY: CJO

DAMMON  
ENGINEERING, INC.  
LOUISIANA & MISSISSIPPI  
Chief Engineer: Brian Wicks, PE  
534 Old Spanish Trail  
Stilwell, LA 70588  
www.dammonengineering.com  
info@dammonengineering.com  
PH: 985.691.5032

ADD TO FAN SCHEDULE → EF-4 | 1000 CFM | 0.3" S.P. | TWIN CITY TCLB 105 OR EQUAL. AIRSIDE TO BE COATED (HI-PRO POLY OR EQ.)

SCALE 1/8" = 1'-0"  
FLOOR PLAN



\* - EGGRATE EXHAUST GRILLE, FRP CONSTRUCTION