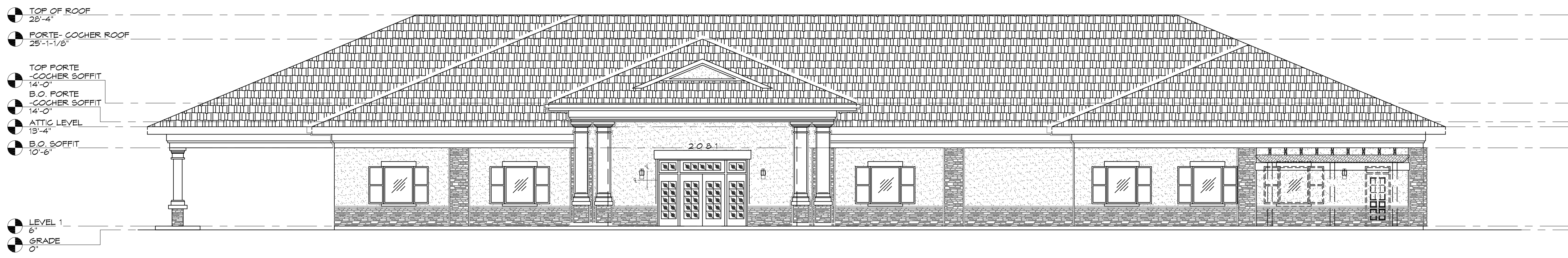
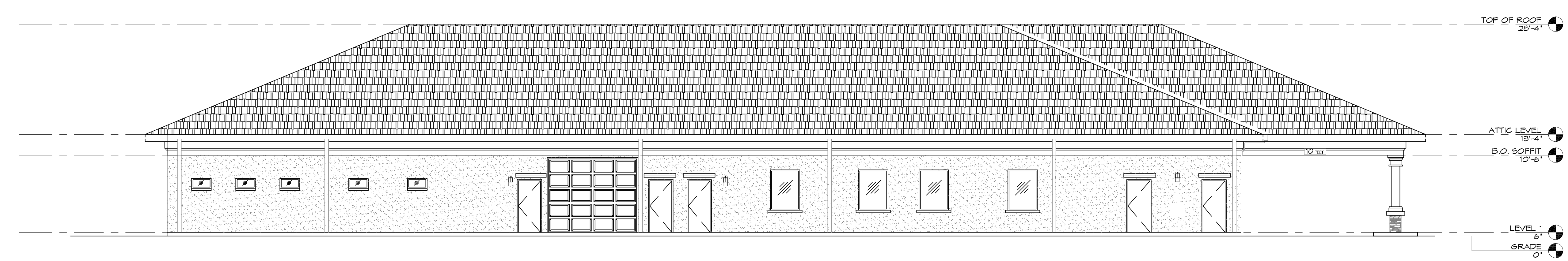


FILE NAME: J:\A - Commercial\2344 - General Home at Green Bay\2344\General Home at Green Bay.dwg
 PLOT DATE & TIME: Friday, September 14, 2018 10:03:13 AM
 PLOT DEVICE: HPGL-ETB

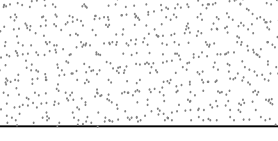


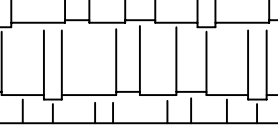


1 FRONT ELEVATION
SCALE: 1/8"=1'-0"



2 REAR ELEVATION
SCALE: 1/8"=1'-0"

LEGEND

-  EP1-CEMETITIOUS FINISH-STUCCO / SAND TEXTURE
-  EP2-CEMETITIOUS FINISH-STUCCO / SAND TEXTURE
-  STACKED STONE
-  DIMENSIONAL SHINGLE

NOTE:

1. ALL STUCCO SURFACES TO BE SAND FINISH.
2. MAIN FIELD COLOR TO BE EP1.
3. ALL STUCCO SOFFITS TO HAVE SAND FINISH.
4. ALL 2X FASCIAS AND HARDIE BOARD FASCIAS TO BE PAINTED (EP2).
5. ALL DRIP EDGES & FLASHING, MISC. METAL TRIM & RAIN HOODS TO BE KAYNAR 500 FINISH CUSTOM COLOR EP2 (U.N.O.)
6. ALL GUTTERS & DOWNSPOUTS TO BE PRE-FINISHED KAYNAR 500 FINISH CUSTOM COLOR EP2.
7. SEE A500 FOR DOOR & WINDOW FINISHES & COLORS.

DAMMON
ENGINEERING, INC.
 LOUISIANA & MISSISSIPPI
 Chief Engineer: Brian Metch, PE
 554 Old Spanish Trail
 Slidell, LA 70468
 www.dammonengineering.com
 info@dammonengineering.com
 PH: 985.649.9822

REVISIONS	DATE
#	DESCRIPTION

SEAL:

ZI
NEOME
GENERAL
 2081 GAISE BLVD E
 SLIDELL, LA 70461
 JOB No: 2350 DATE: 08-19-2018
 DRAWN BY: JAGMM CHECKED BY: CKD

SHEET TITLE:
EXTERIOR ELEVATIONS

DRAWING NUMBER:
A105

