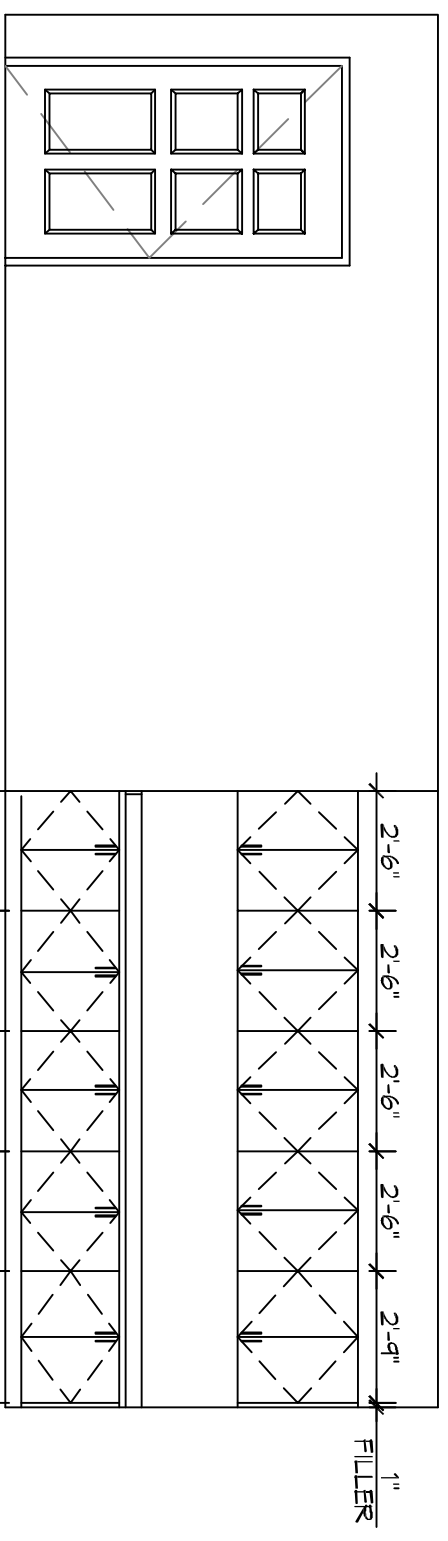
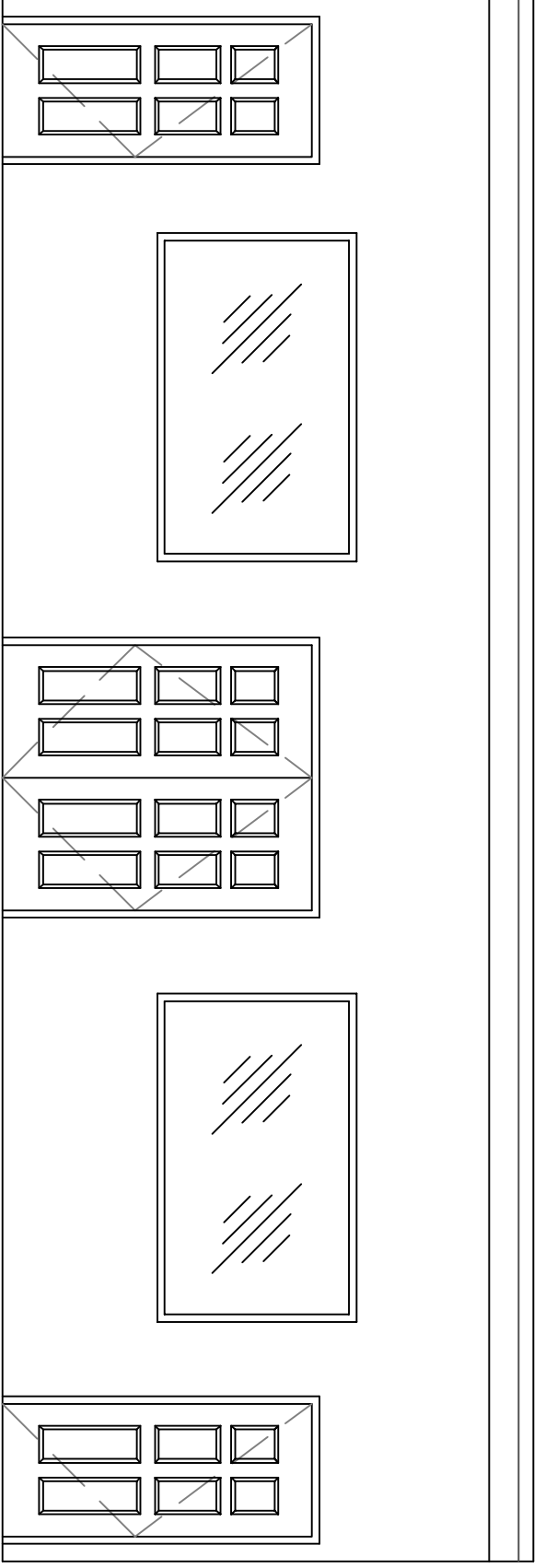


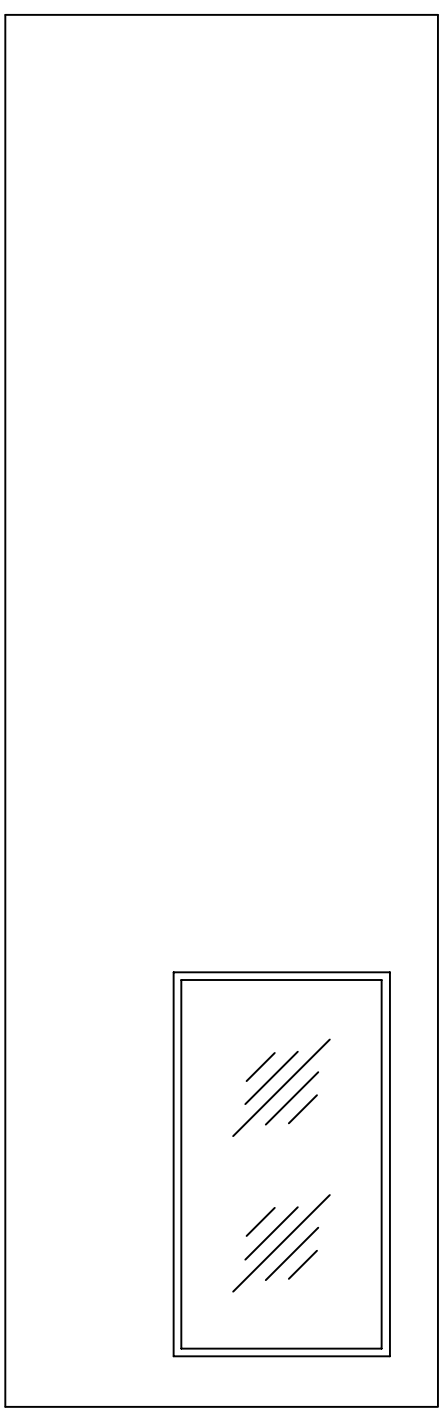
- REFERENCE NOTES**
1. REFER TO DESIGN STANDARDS FOR REQUIREMENTS RELATED TO THIS SHEET. CONTRACTOR IS RESPONSIBLE FOR BUILDING STANDARDS.
 2. REFER TO FFE DRAWINGS FOR THE FINISHES & EQUIPMENT REQUIREMENTS. FFE IS NOT COMPLETED BY DAMMON ENGINEERING AND WILL BE SUBMITTED BY OWNER.



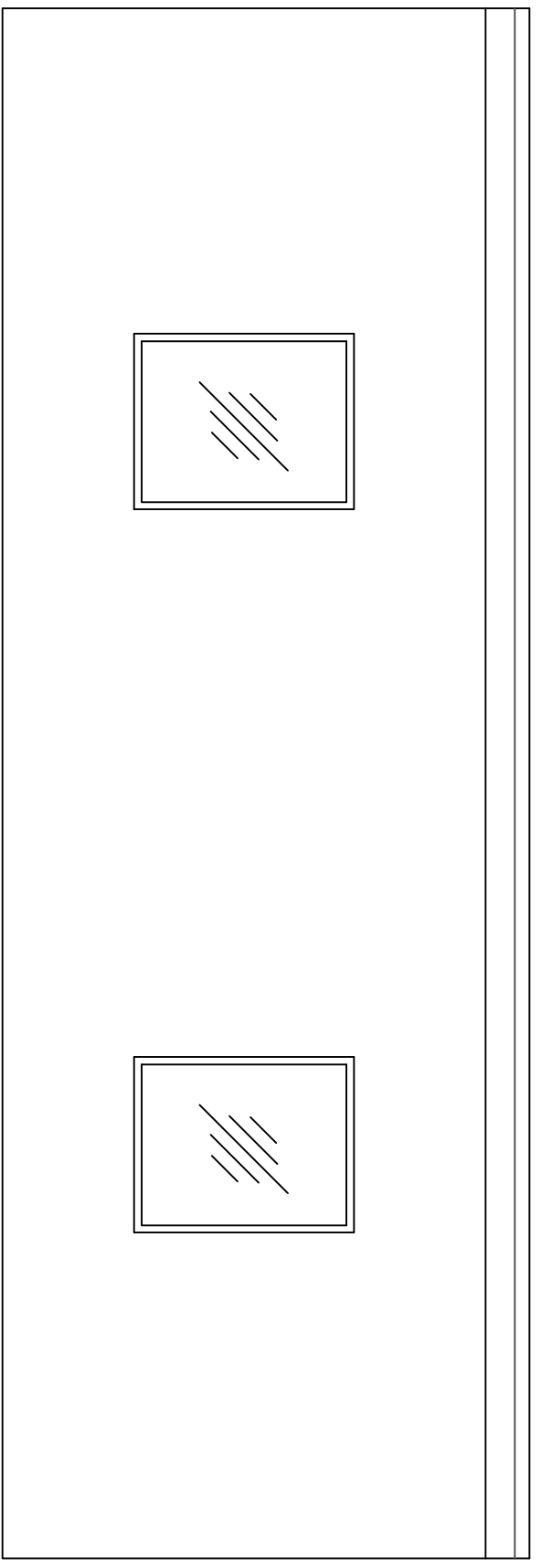
5 SCREATORRY ELEVATION
SCALE: 1/4"=1'-0"



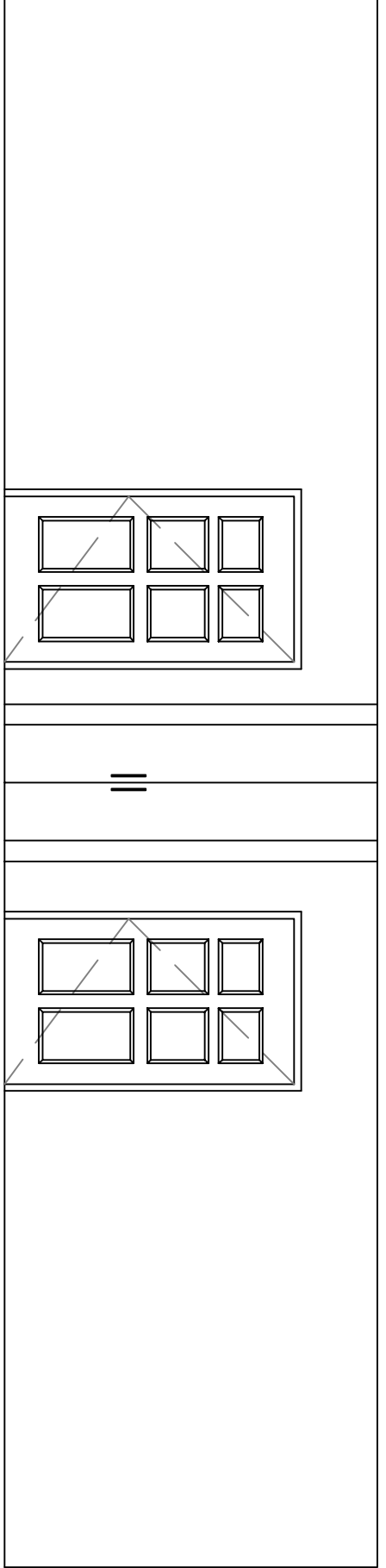
1 VESTIBLE ELEVATION
SCALE: 1/4"=1'-0"



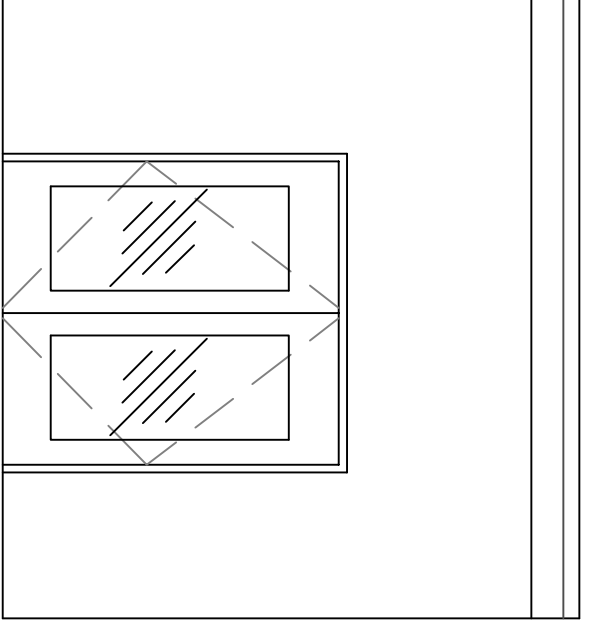
6 SCREATORRY ELEVATION
SCALE: 1/4"=1'-0"



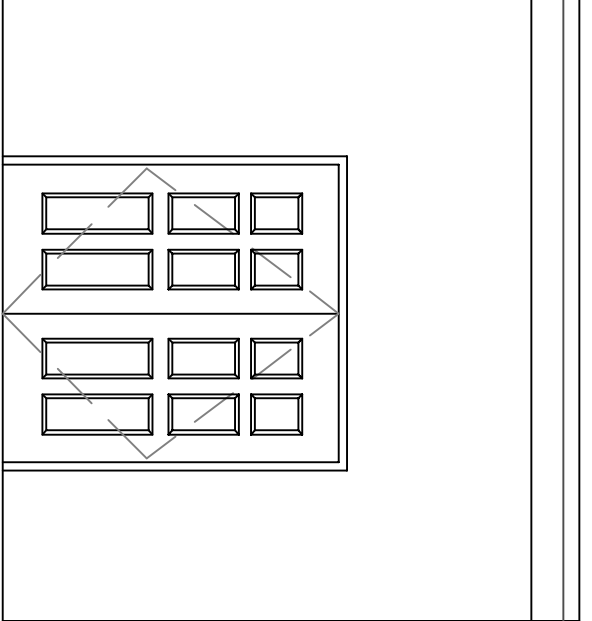
2 VESTIBLE ELEVATION
SCALE: 1/4"=1'-0"



7 STATE ROOMS ELEVATION
SCALE: 1/4"=1'-0"



3 VESTIBLE ELEVATION
SCALE: 1/4"=1'-0"



4 VESTIBLE ELEVATION
SCALE: 1/4"=1'-0"

DAMMON ENGINEERING, INC.
LOUISIANA & MISSISSIPPI

Chief Engineer: Brian Mistich, PE
554 Old Spanish Trail
Slidell, LA 70458

www.dammonengineering.com
info@dammonengineering.com
PH: 985.649.5832

REVISIONS		
#	DESCRIPTION	DATE

INTERIOR ELEVATIONS

2021 GAUSE BLVD E
SLIDELL, LA 70461

JOB No: 2360 DATE: 04-19-2018

DRAWN BY: JA6MVA CHECKED BY: CKD

2021 GAUSE BLVD E
SLIDELL, LA 70461

A304

SHEET NO: 6 OF 11