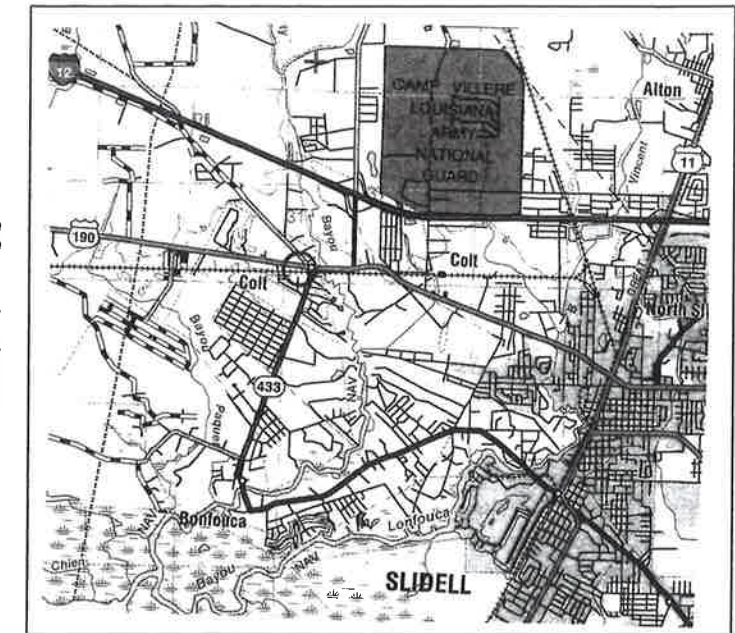
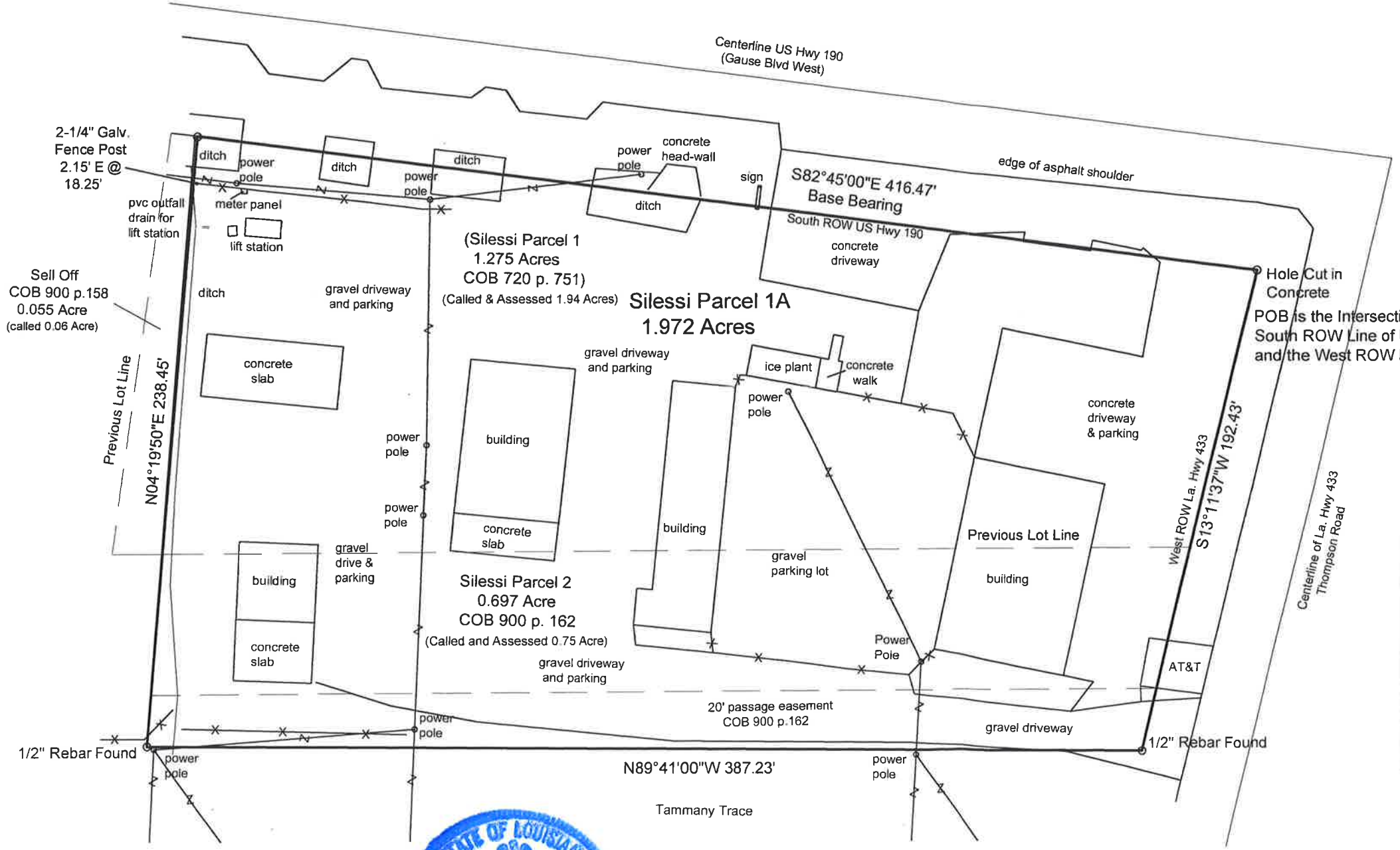


Map Showing Survey
of a Minor Resubdivision of
Silessy Parcel 1 and Silessy Parcel 2
into Silessy Parcel 1A
Section 39, T8S, R14E
St. Tammany Parish, Louisiana
for Emile J. Silessy



Scale: 1" = 50'



St. Tammany Parish Planning Commission
APPROVED

Secretary _____

Director of Department of Engineering _____

Clerk of Court _____

Date _____

File Number _____



Mark T. Chemay 1.23.19
Mark T. Chemay PLS 4560 November 6, 2018
Revised January 23, 2019

I certify that this map represents an actual ground survey made by me and conforms to the Standards of Practice for Property Boundary Surveys as defined in LAC 46:LXI Chapter 29 for a Class C Survey.

Reference: Deeds at COB 352, p. 432, COB 720, p. 751, COB 900 pp 158 and 162.
Bearing Basis: South ROW Line of US Hwy 190 by deeds.
South Line Reference: Survey by Ivan M. Borgen, September 18, 1978, revised October 3, 1978, monumentation found (Survey# 17483D).
West Line Reference: Survey by Ivan M. Borgen, September 18, 1978 (Survey#17483A).
Revised January 23, 2019 to reword title of map, add parcel information and official signature block. Fieldwork certified as of November 6, 2018.

**Robert Barrilleaux
and Associates, Inc.**
Engineers-Land Surveyors
42333 Deluxe Plaza #8
Hammond, La. 70403
985-542-0391

Drawing: Emile Silessy 1.972 Acres 39-8-14