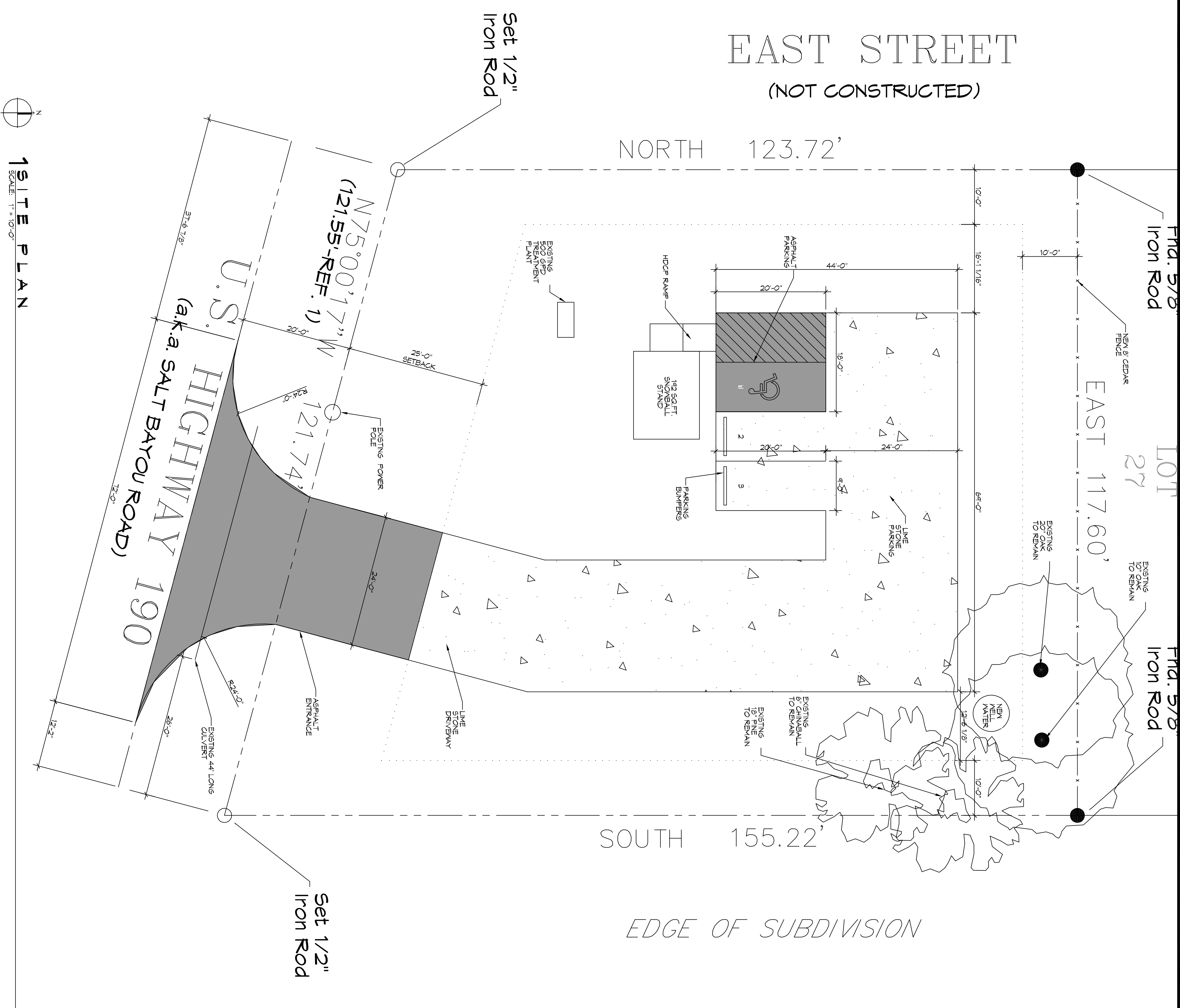


# EAST STREET (NOT CONSTRUCTED)



1 SITE PLAN  
SCALE: 1" = 10'-0"

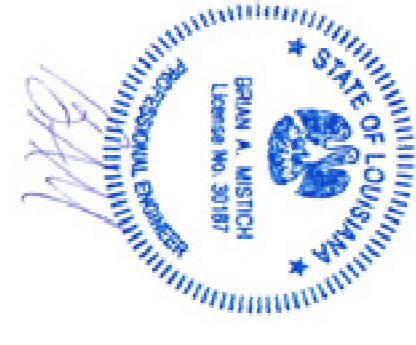
<b>PLANNING</b>	LOT 28 - 31 SQ. FT. ZONED HIGHWAY COMMERCIAL
<b>FLOOD ZONE</b>	ZONE 'C'
<b>BUILDING ELEVATION</b>	BASE FLOOD ELEVATION = 0 BFE = N/A FINISHED FLOOR ELEVATION = 12" ABOVE NATURAL GRADE
<b>PARKING</b>	RETAIL: 1 SPACE PER EACH 350 SQ. FT. OF GROSS FLOOR AREA EXCLUDING STORAGE AREAS WHICH SHALL NOT EXCEED 15 PERCENT OF THE GROSS AREA. 182 / 350 = 1 REQUIRED TOTAL OF 9 PARKING SPACES PROVIDED

**DAMMON ENGINEERING, INC.**  
LOUISIANA & MISSISSIPPI

Chief Engineer: Brian Mistic, PE  
554 Old Spanish Trail  
Slidell, LA 70458

www.dammonengineering.com  
info@dammonengineering.com  
PH: 985.649.5832

REVISIONS	
#	DESCRIPTION



**ZACK'S SNACKS SNOWBALL STAND**

**M I S S I S S I O T T A**

LOTS 21-31  
U.S. HWY 190  
SLIDELL, LA

JOB No: 2382 DATE: 05-02-2019

DRAWN BY: GKD CHECKED BY: BAM

We warrant to prepare and specify plans, designs and arrangements representing the best and most proper the practice of Business Engineering, and to execute them in accordance with the specifications and conditions of the contract. We warrant that the plans, designs and arrangements are in accordance with the laws and regulations of the State of Louisiana. We warrant that the plans, designs and arrangements are in accordance with the laws and regulations of the State of Louisiana. We warrant that the plans, designs and arrangements are in accordance with the laws and regulations of the State of Louisiana.

SHEET TITLE:  
SITE PLAN

DRAWING NUMBER:  
**C101**

SHEET No. 1 of 2