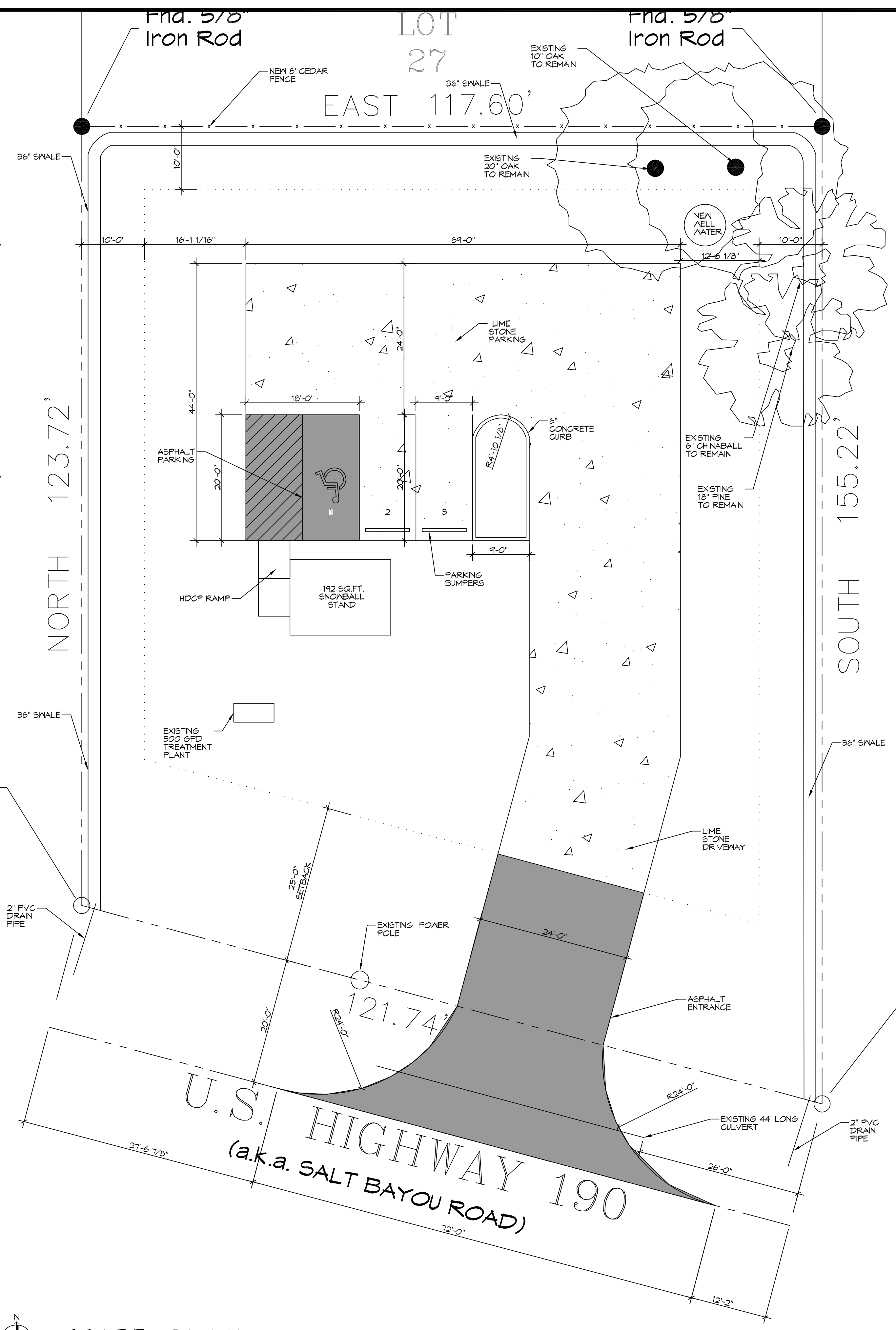


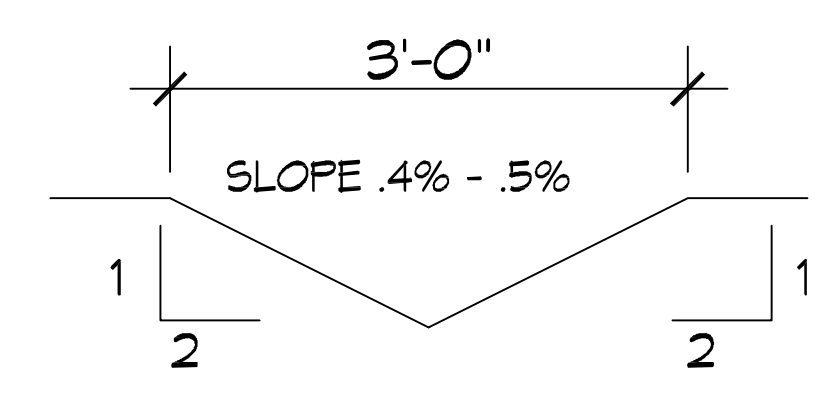
EAST STREET
(NOT CONSTRUCTED)

Set 1/2" Iron Rod

Set 1/2" Iron Rod



1 SITE PLAN
SCALE: 1" = 10'-0"



2 SWALE SECTION
SCALE:

| |
|---|
| PLANNING |
| LOT 28 - 31 SQ. 7 ZONED HIGHWAY COMMERCIAL |
| FLOOD ZONE |
| ZONE 'C' |
| BUILDING ELEVATION |
| BASE FLOOD ELEVATION = C BFE = N/A FINISHED FLOOR ELEVATION = 12' ABOVE NATURAL GRADE |
| PARKING |
| RETAIL : 1 SPACE PER EACH 350 SQ. FT. OF GROSS FLOOR AREA EXCLUDING STORAGE AREAS WHICH SHALL NOT EXCEED 15 PERCENT OF THE GROSS SQUARE FOOTAGE AREA: 192 / 350 = 1 REQUIRED TOTAL OF 3 PARKING SPACES PROVIDED |

| PROJECT: Pisciotta | | | |
|--|------------------------------|--------------------------|-----------------|
| DISCHARGE RUNOFF CALCULATIONS - RATIONAL METHOD | | | |
| PRIOR DEVELOPMENT 10 Year Frequency | | | |
| Waterlight Surfaces (C1) = | 0.08 | 0 sqft = 0.000 Acres | |
| Gravel Surface (C2) = | 0.14 | 0 sqft = 0.000 Acres | |
| Green Space (C3) = | 0.21 | 16339 sqft = 0.376 Acres | |
| Summary (C) = | 0.21 | 16339 sqft = 0.376 Acres | |
| Duration (D) = Time of concentration (TC) TC = 70266 * 0.39176 * 1.13003 * 1895 | | | |
| where | L = 123 | Runoff length ft | Elve off = 1 |
| | c = 0.21 | Runoff coef | |
| | S = 0.0130 | Percent Slope | |
| Therefore | TC = 24.23 | minutes of | |
| and from Rainfall Intensity I | 1 = 5.98 | in/hr | |
| Q ₁ = | 0.353 cfs | RUNOFF LIMIT 90% | 0.354 cfs |
| POST DEVELOPMENT 10 Year Frequency | | | |
| Waterlight Surfaces (C1) = | 0.08 | 900 sqft = 0.022 Acres | |
| Gravel Surface (C2) = | 0.14 | 3700 sqft = 0.087 Acres | |
| Green Space (C3) = | 0.21 | 15247 sqft = 0.350 Acres | |
| Summary (C) = | 0.23 | 19997 sqft = 0.459 Acres | |
| D = Time of concentration (TC) TC = 70266 * 0.39176 * 1.13003 * 1895 | | | |
| where | L = 123 | Runoff length ft | Elve off = 0.75 |
| | c = 0.23 | Runoff coef | |
| | S = 0.0098 | Percent Slope | |
| Therefore | TC = 26.08 | minutes of | |
| and from Rainfall Intensity I | 1 = 5.90 | in/hr | |
| Q ₂ = | 0.528 cfs | | |
| RESULTS | | | |
| RETENTION REQUIRED Q ₂ - Q ₁ | 0.174 cfs | | |
| ONE HOUR DETENTION | 625.1 cuft | | |
| RETENTION DIMENSIONS | WIDTH = 3 feet | | |
| | LENGTH = 385 feet | | |
| | DEPTH = 0.54 feet | | |
| DISCHARGE END AREA CALCULATIONS | | | |
| Q = CAQ ^{0.48112} | where Q is allowable run off | | |
| Allowable run off | Q = 0.354 cfs | | |
| Friction loss factor | c = 0.98 coefficient | | |
| Acceleration | a = 32.2 ft/sec ² | | |
| Height above invert | H = 1.00 feet | | |
| End area | A = 0.05 sqft | | |
| REQUIRED CONDUIT = | 2.37 inch diameter | | |
| | USE 2" EACH END | | |

DAMMON ENGINEERING, INC.
LOUISIANA & MISSISSIPPI

www.dammonengineering.com
556 Old Spanish Trail
Bossier City, LA 70604
PH: 985.497.1828

Chief Engineer: Brian Mitchel, PE
Info@dammonengineering.com

| REVISIONS | DATE |
|-----------|-------------|
| # | DESCRIPTION |



ZACK'S SNACKS SNOWBALL STAND
MIKE MISCIOTTA
LOTS 21-31
U.S. HWY 190
SLPELL, LA

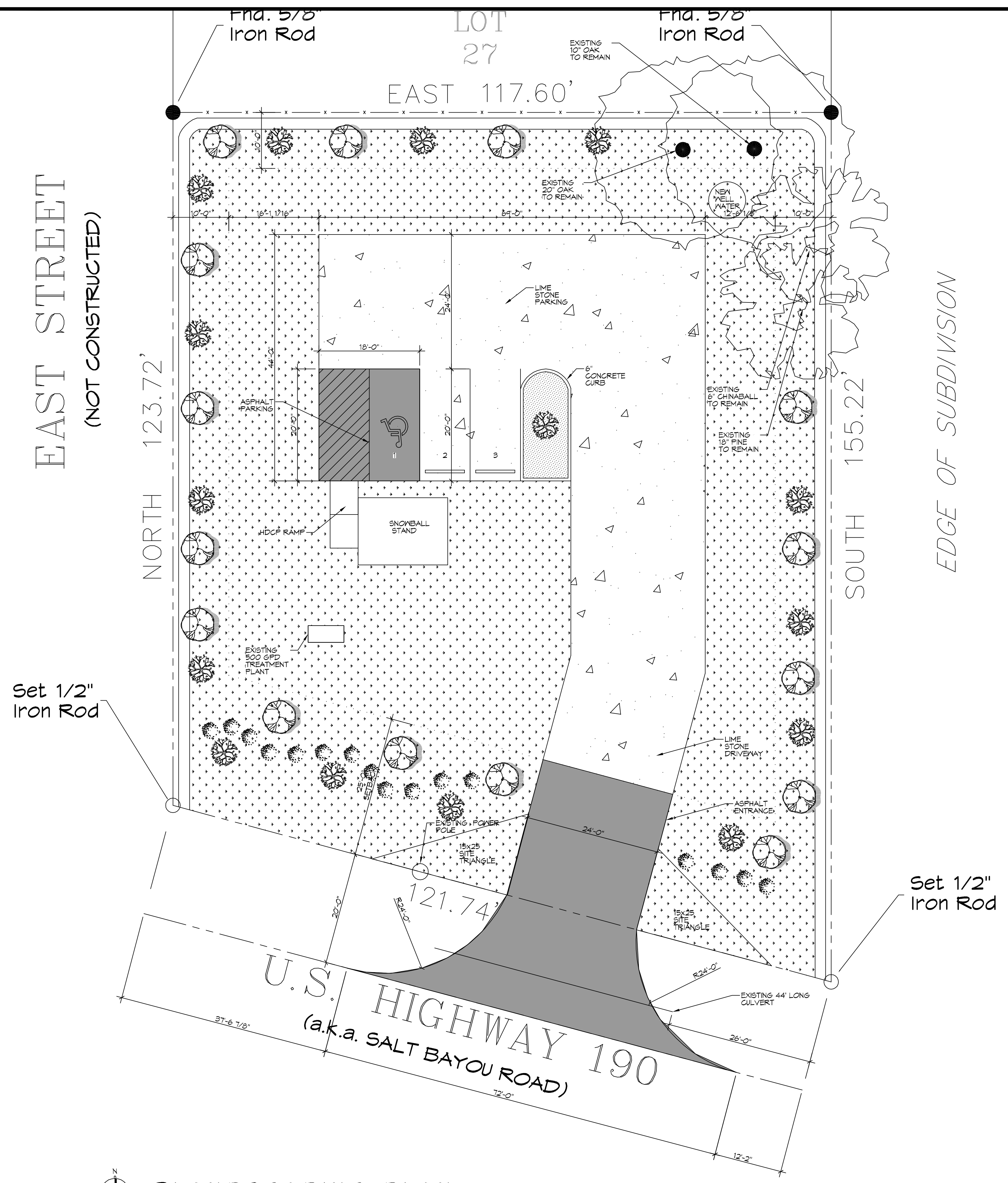
JOB No: 2392 DATE: 06-20-2019
DRAWN BY: CACD CHECKED BY: BMM

SHEET TITLE:
SITE PLAN

DRAWING NUMBER:
C101

SHEET No: 1 of 2

THE MATERIALS AND METHODS SHOWN ON THIS DRAWING ARE THE PROPERTY OF DAMMON ENGINEERING, INC. AND ARE NOT TO BE REPRODUCED OR TRANSMITTED IN ANY FORM OR BY ANY MEANS, ELECTRONIC OR MECHANICAL, INCLUDING PHOTOCOPYING, RECORDING, OR BY ANY INFORMATION STORAGE AND RETRIEVAL SYSTEM.



EAST STREET
 (NOT CONSTRUCTED)

EDGE OF SUBDIVISION

LANDSCAPING PLAN
 SCALE: 1" = 10'-0"

LANDSCAPING NOTES

- ALL LANDSCAPING INDICATED ON THIS SHEET WILL BE INSTALLED UNDER SEPARATE CONTRACT BY OTHERS AND NOT IN CONTRACT "N/C" AND ARE SHOWN FOR COORDINATION AND PERMITTING PURPOSES ONLY.
- ALL LANDSCAPING SHALL BE DESIGNED AND INSTALLED BY A LANDSCAPING COMPANY LICENSED IN THE STATE OF LOUISIANA.
- CONTACT LOCAL UNDERGROUND UTILITY SERVICES FOR UTILITY LOCATION AND IDENTIFICATION, PRIOR TO COMMENCING WORK.
- PERFORM EXCAVATIONS IN THE VICINITY OF UNDERGROUND UTILITIES WITH CARE AND BY HAND, IF NECESSARY. THE CONTRACTOR BEARS FULL RESPONSIBILITY FOR THIS WORK AND DISRUPTION OR DAMAGE TO UTILITIES AND SHALL BE IMMEDIATELY REPAIRED AND AT NO EXPENSE TO THE OWNER.
- ITEMS ENCOUNTERED BELOW GRADE AND NOT SHOWN ON THE DRAWINGS SHALL BE BROUGHT TO THE ATTENTION OF THE CONTRACTOR.
- CONTACT THE LOCAL UNDERGROUND SERVICE UPDATE FOR UTILITY LOCATION AND IDENTIFICATION PRIOR TO DEMOLITION.

LEGEND

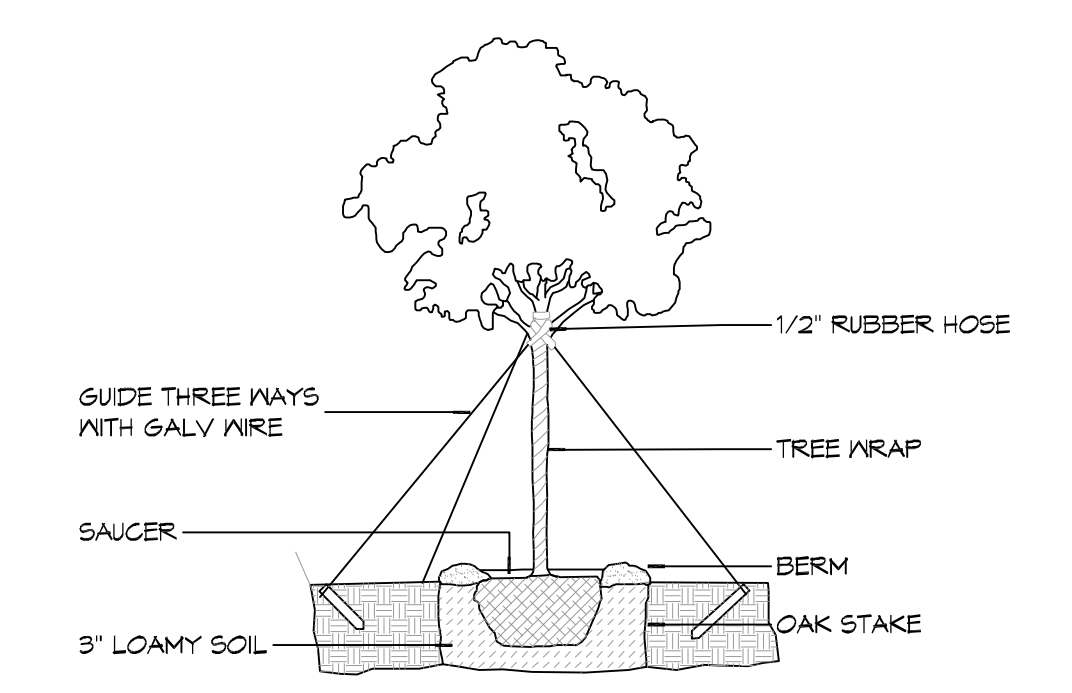
- DD BLANCHARD MAGNOLIA
 ALL CLASS 'A' TREES, AT THE TIME OF PLANTING, SHALL HAVE A MINIMUM CALIPER OF AT LEAST ONE AND ONE-HALF (1-1/2) TO TWO (2) INCHES, MEASURED SIX (6) INCHES ABOVE THE ROOT BALL, AND A MINIMUM HEIGHT OF 6-8 FEET AT TIME OF PLANTING AND A MATURE AVERAGE CROWN SPREAD OF 15 FEET.
 - HOLLY
 ALL CLASS 'B' TREES AND ALL TREES, OTHER THAN CLASS 'A' TREES, AT THE TIME OF PLANTING, SHALL HAVE A MINIMUM CALIPER OF AT LEAST ONE AND ONE-HALF (1-1/2) INCHES, MEASURED (6") SIX INCHES ABOVE THE ROOT BALL AND A MINIMUM HEIGHT OF 6 FEET.
 - AZALEA SHRUB
 A RELATIVELY LOW-GROWING BUSHY PLANT, USUALLY WITH WOODY STEMS. FOR THE PURPOSE OF THIS DEFINITION, GROUND COVER, TREES AND ANNUALS ARE NOT CONSIDERED SHRUBS. ALL SHRUBS, AT THE TIME OF PLANTING, SHALL HAVE A MINIMUM HEIGHT OF TWO (2) FEET.
 - GRASS
 - PINE MULCH
- NOTE: ALL TREES & SHRUBS TO BE MULCHED 1/3" DEPTH. ALL OTHER AREAS TO BE COVERED IN LIVE GROUND COVER OR SOD.

LICENSED LANDSCAPER

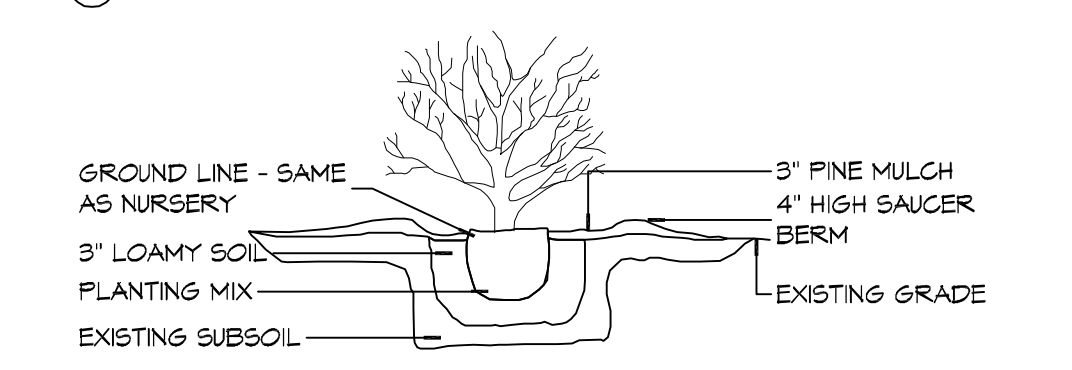
BILL BROVYN JR.
 LUXURY LANDSCAPE SERVICES 985-774-5211
 HORT. #2371

PARKING

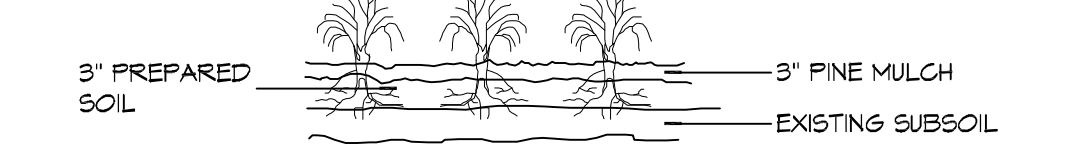
RETAIL : 1 SPACE PER EACH 350 SQ. FT. OF GROSS FLOOR AREA EXCLUDING STORAGE AREAS WHICH SHALL NOT EXCEED 15 PERCENT OF THE GROSS SQUARE FOOTAGE
 AREA: 182 / 350 = 1 REQUIRED
 TOTAL OF 3 PARKING SPACES PROVIDED



NOTE:
 ALWAYS PLANT EQUAL TO OR 1" - 2" ABOVE GROUND.
© TYPICAL TREE PLANTING



© TYPICAL SHRUB PLANTING



© GROUND COVER

4 DETAILS
 SCALE: NTS

DAMMON ENGINEERING, INC.
 LOUISIANA & MISSISSIPPI
 www.dammonengineering.com
 info@dammonengineering.com
 Phone: 985-887-2828
 Chief Engineer: Brian Mitchell, PE
 Site: Old Spanish Trail
 Saratoga, LA 70588

| REVISIONS | DATE |
|-----------|------|
| | |
| | |
| | |
| | |
| | |
| | |
| | |
| | |
| | |

SEAL:

ZACK'S SNACKS SNOWBALL STAND
MICKELT
 LOTS 21-31
 U.S. HWY 190
 SLPPELL, LA
 JOB No: 2392 DATE: 06-20-2019
 DRAWN BY: CACD CHECKED BY: BMM

SHEET TITLE:
 LANDSCAPING PLAN
 DRAWING NUMBER:
L101
 SHEET No: 2 of 2