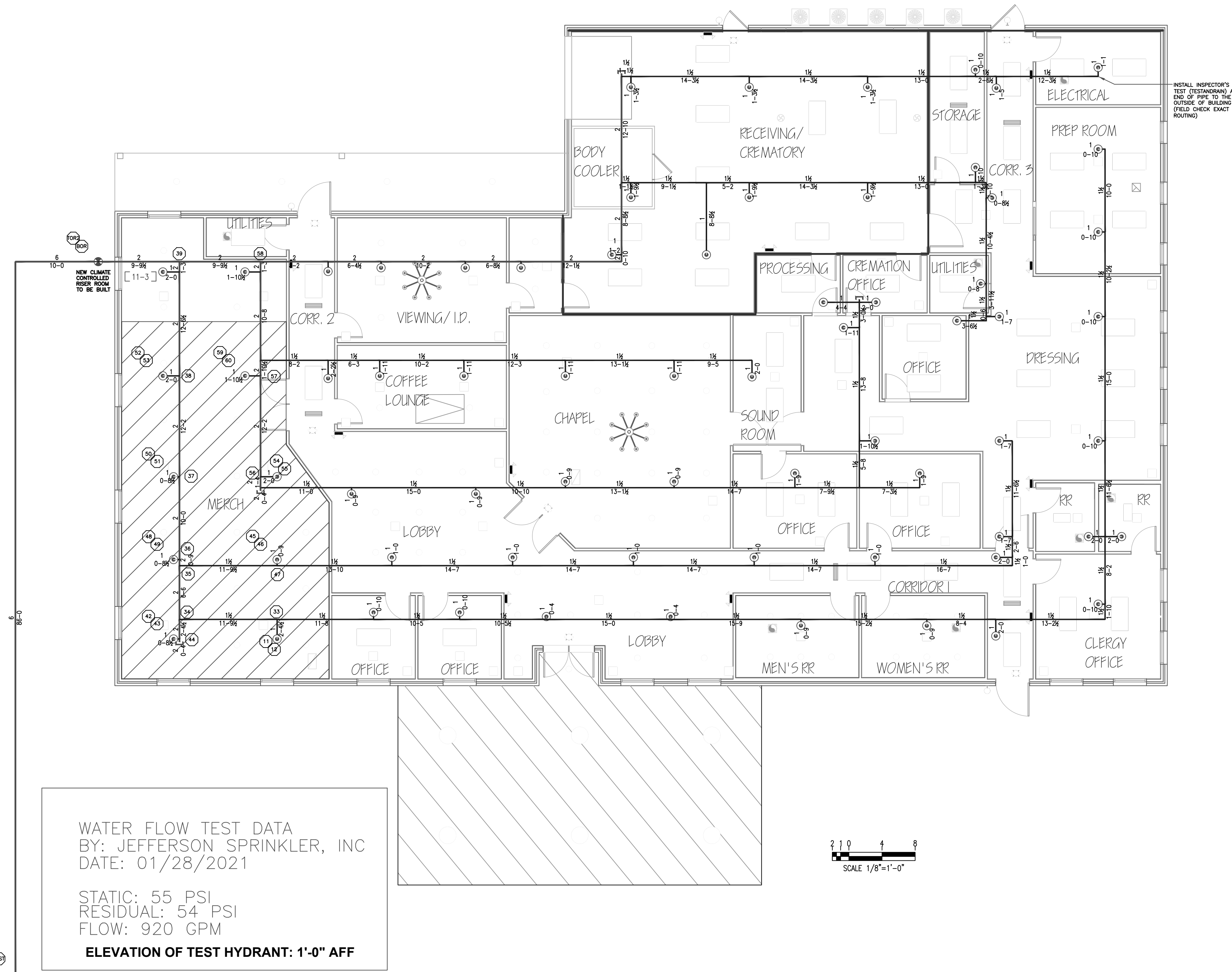


CALC. 1 - PRIMARY WARD GROUP 2 (MERCANTILE)
 DENSITY: 0.10 GPM/FT² AREA: 1500 SF
 MAX. C.L. Ht.: 12'-0" REDUCTION: 40%
 SLOPE: C.L. IN A INCREASE, OR
 AREA REQ.: 300 SF AREA CALC. 983 SF.
 REQUIRES: 219 GPM @ 45 PSI @ BOR

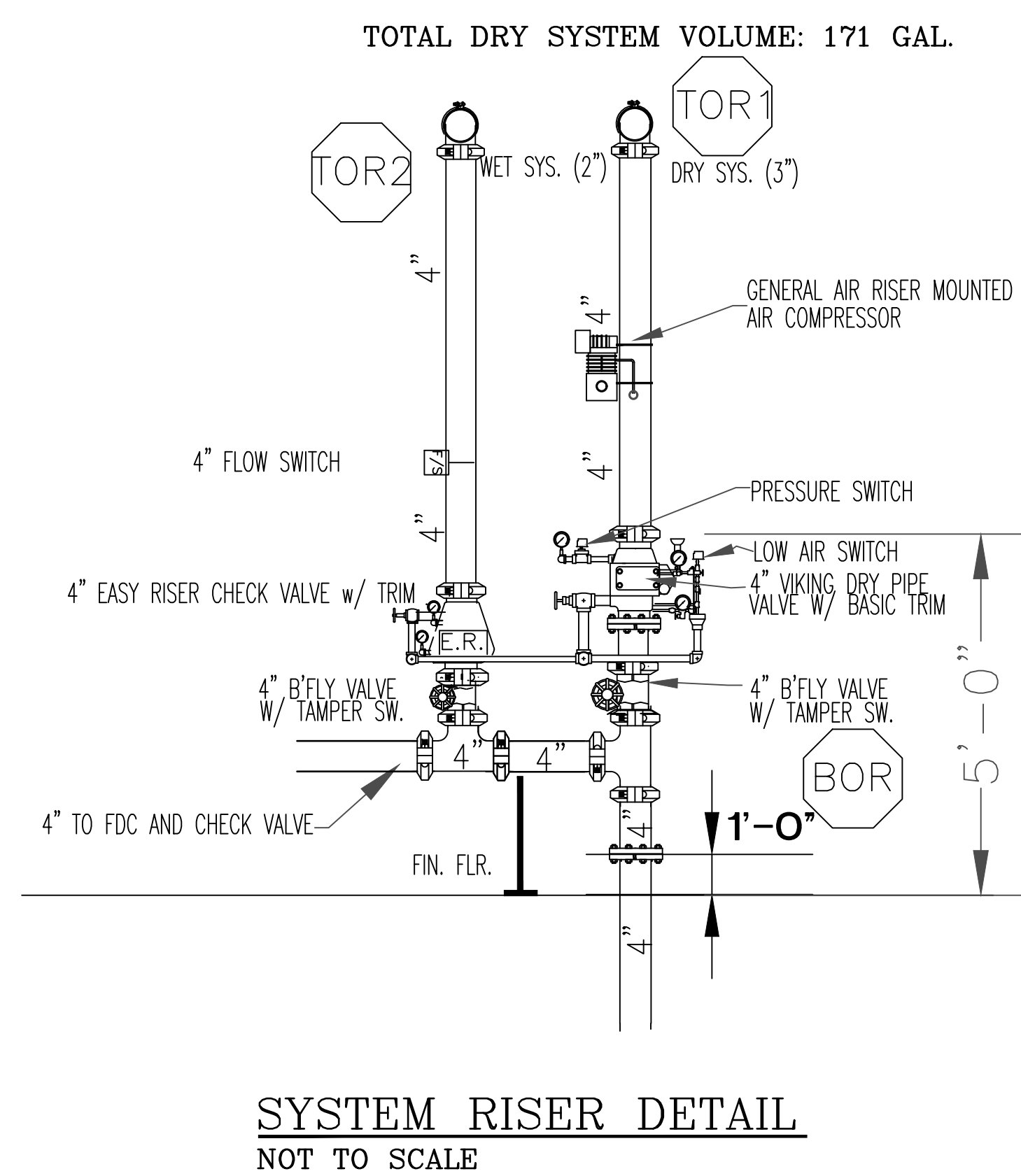


WATER FLOW TEST DATA
 BY: JEFFERSON SPRINKLER, INC
 DATE: 01/28/2021
 STATIC: 55 PSI
 RESIDUAL: 54 PSI
 FLOW: 920 GPM
 ELEVATION OF TEST HYDRANT: 1'-0" AFF

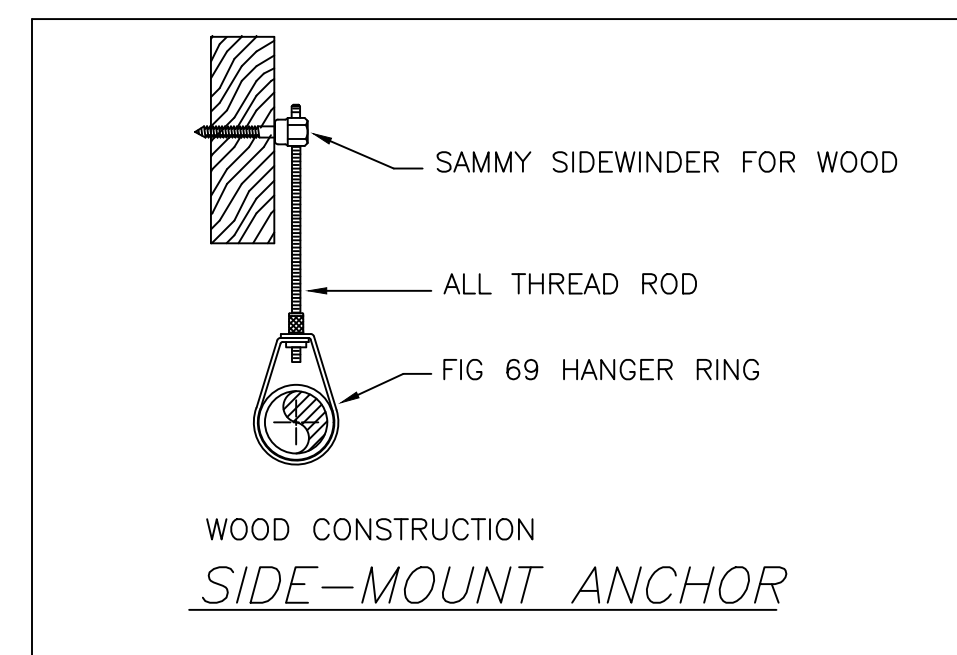
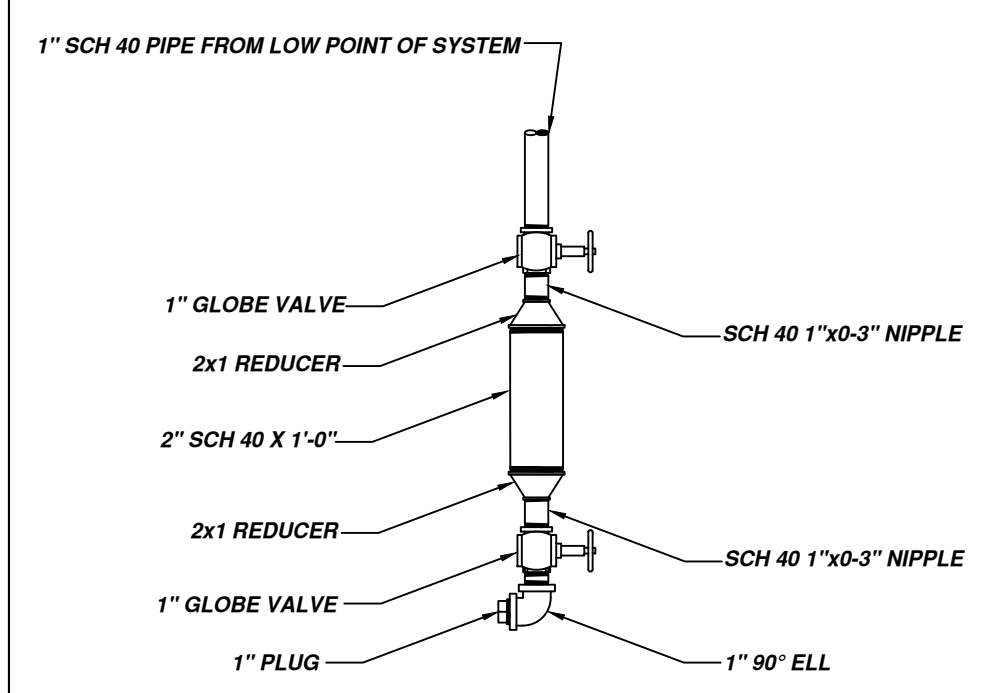
SCALE 1/8"=1'-0"

DOWNMAN RD

MAIN FLOOR FIRE SPRINKLER PIPING PLAN

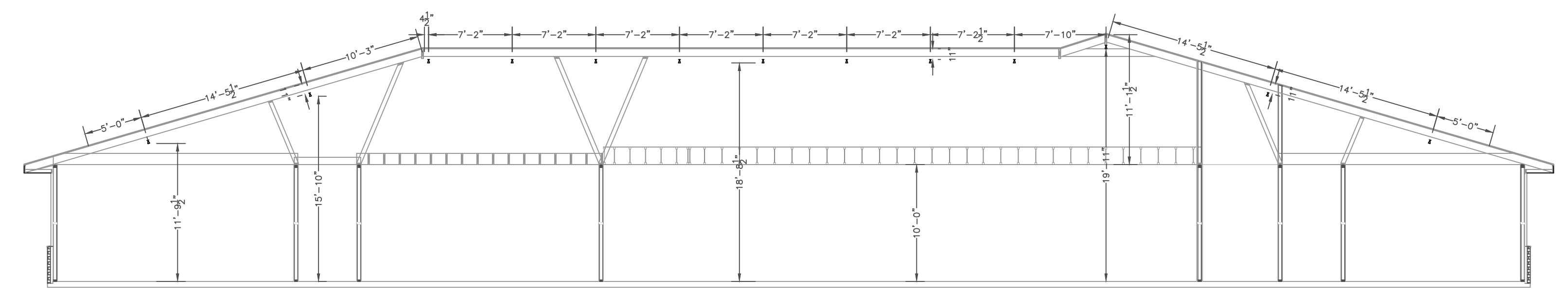


DRUM DRIP DETAIL



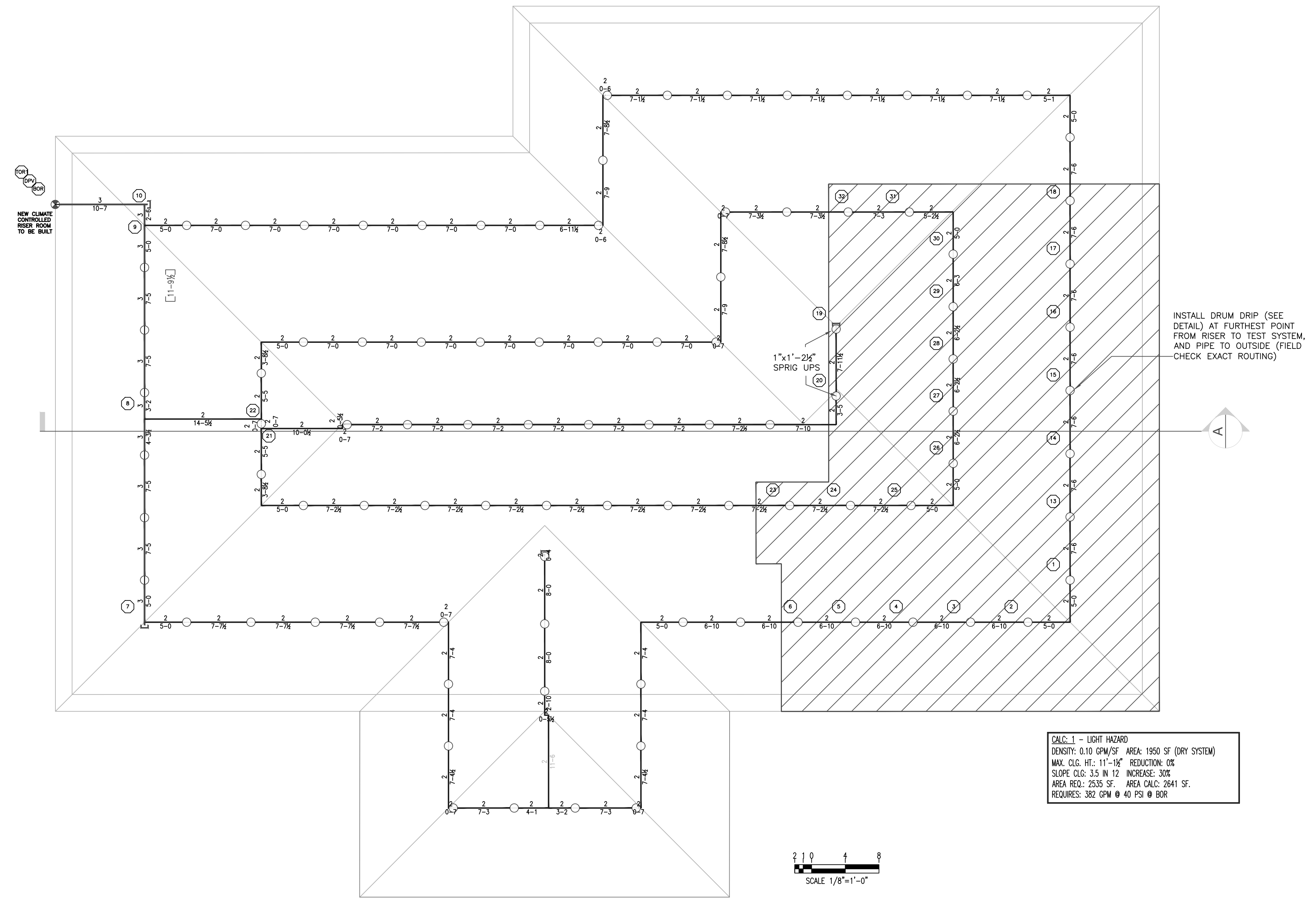
GENERAL NOTES

- Jefferson Sprinkler, Inc has a contract to install two new automatic fire sprinkler systems, one dry system and one wet system.
- The sprinkler system is designed in accordance with NFPA 13, 2016 Edition.
- It is the building owners responsibility to provide adequate heat for all areas in the building protected by wet sprinkler systems and for all water filled supply pipes, valves and system risers in all dry pipe sprinkler systems.
- All new piping is to be hydrostatically tested at not less than 200 psi for 2 hours, or at 50 psi in excess of the maximum pressure, when the maximum pressure to be maintained is in excess of 150 psi.
- Whether or not indicated on drawings, the following items are to be provided:
 - o Spare head cabinet with wrench (NFPA 13)
 - o Provisions for flushing connections and draining of all pipe.
 - o Insulators test connection shall be provided for each system
 - o) for wet pipe systems (see NFPA 13)
 - o Water flow on all wet systems and zones.
 - o Tamper switches on all indicating control valves.
 - o Monitoring of all signal devices by an approved means.
- All pipe 1" and smaller is to be schedule 40 steel with cast iron screwed
- All pipe 1 1/4" and larger is to be schedule 10 steel with grooved couplings and grooved mechanical fittings or equivalent, with welded branch outlets.
- All sprinklers are listed quick response unless noted otherwise.
- All hangers are to be field located for compliance with NFPA 13.
- All devices are to be listed or approved for use in fire protection systems.
- Building is a conditioned space that will be maintained at 40F or above.
- Building spaces that are not a conditioned space will be protected by a dry Dry Sprinkler System.
- All dry pipe to be sloped 1/4" per 10 linear feet for mains and 1/8" per 10 linear feet for branch lines.



SECTION A

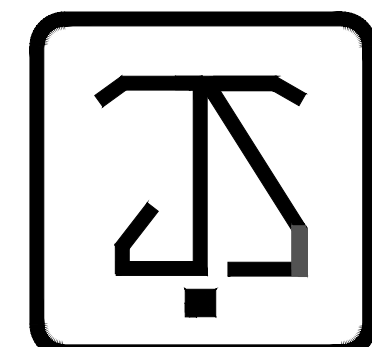
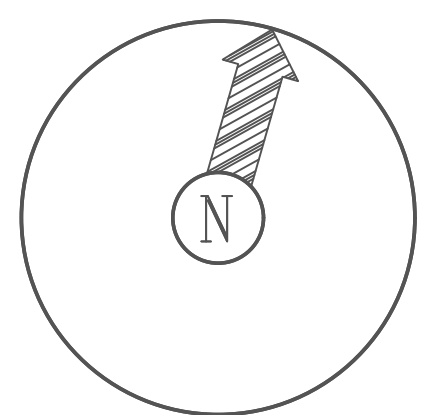
SCALE 1/8"=1'-0"



CALC. 1 - LIGHT WARD
 DENSITY: 0.10 GPM/FT² AREA: 1500 SF (DRY SYSTEM)
 MAX. C.L. Ht.: 11'-0" REDUCTION: 40%
 SLOPE: C.L. IN A INCREASE, OR
 AREA REQ.: 255 SF AREA CALC. 241 SF.
 REQUIRES: 302 GPM @ 40 PSI @ BOR

SCALE 1/8"=1'-0"

ATTIC FIRE SPRINKLER PIPING PLAN



JEFFERSON SPRINKLER, INC.

"Fire Protection Specialist"

1903 Hancock St.
 Phone 504-393-7699

Gretna, La. 70053
 Fax 504-367-0216

General Notes

1. All Pipe Locations are to be Field Measured Prior to Fabrication and Installation by Sprinkler Contractor.
2. All Dimensions Shown are Center to Center.
3. High Temperature Heads are to be Field Located Where Required.
4. All Pipes and Hangers are to be Installed per NFPA #13.
5. Hangers are to be U.L. Listed and F.M. Approved.

Symbol	Description	Number of Sprinklers	
		Total This Sheet	Total This Job
(-)-	Hydraulic Reference Points		
(-)-	Elev. Below Top of Steel		
(+)-	Elev. Above Finished Floor		
(+)-	Elev. of Top of Steel		
(-)-	Ceiling Height		
(-)-	Denotes Hanger Location		
(-)-	Rise up or down		

FIRE SPRINKLER PLANS			
Drawing Title	Contract No.	Revision:	Date:
	16228		
Drawn By	B. MICKLER		
Scale	AS NOTED		
Date	04/22/2021		
Approval By	LASF		

Job: BOYD FUNERAL HOME
 4800 DOWNMAN RD
 NEW ORLEANS, LA 70126

Contractor: K B KAUFMANN & CO INC
 3173 E TERRACE AVE
 SLIDELL, LA 70458