

# LIFE-SAFETY INFORMATION

**APPLICABLE CODES**  
 NFPA 101 LIFE-SAFETY CODE 2015  
 OCCUPANCY B, NON-SEPARATED USE; CONSTRUCTION TYPE V B  
 BUSINESS (CHAPTER 38)  
 MIXED OCCUPANCY (REFERENCE CHAPTER 6)  
**OCCUPANT LOAD FACTOR** (REFERENCE TABLE 7.3.1.2)  
 10,428 SF / 100 SF PER OCCUPANT = 104 OCCUPANTS

**CLASSIFICATION OF HAZARD OF CONTENTS**  
 (REFERENCE: OCCUPANCY CHAPTER AND 6.2.2; SPECIFY LOW, ORDINARY, OR HIGH)

**CONSTRUCTION TYPE(S)** (REFERENCE: CHAPTERS, TABLE A.9.2.1.2 AND COMMENTARY TABLE 8.1 IN HANDBOOK)  
 VB

**MINIMUM EXIT SEPARATION DISTANCE FOR REMOTELY LOCATED EXITS**  
 (REFERENCE: SECTION 7.5; SPECIFY 1/2 OR 1/3 DIAGONAL DISTANCE OF AREA SERVED)  
 1/2 DIAGONAL = N/A

**MAXIMUM DEAD-END CORRIDORS** (REFERENCE: OCCUPANCY CHAPTER AND TABLE A.7.6)  
**MAXIMUM COMMON PATH OF TRAVEL DISTANCE** (REFERENCE: OCCUPANCY CHAPTER AND TABLE A.7.6)  
**MAXIMUM TRAVEL DISTANCE TO EXITS** (REFERENCE: OCCUPANCY CHAPTER AND TABLE A.7.6)  
 \*MAIN ENTRANCE MUST BE SIGNED TO ACCOMMODATE 1/2 OCCUPANT LOAD OF BUILDING

**EXTINGUISHMENT REQUIREMENTS** **SPRINKLER REQUIRED**  
**DETECTION, ALARM, AND COMMUNICATION SYSTEMS** REQUIRED  
**ALLOWABLE HEIGHT AND BUILDING AREA** PER IBC EQUIVALENT CONSTRUCTION TYPE

# BUILDING CODE INFORMATION

**APPLICABLE CODES**  
 IBC 2015

**BUSINESS GROUP B** (IBC 2012 CHAPTER 19)

**OCCUPANT LOAD CALCULATIONS** (TABLE 1004.1.2)  
 BUSINESS AREA = 10,428 SQ. FT. 100 SF PER OCCUPANT (GROSS) 104 OCCUPANTS

**CONSTRUCTION TYPE(S)** (TABLE 503)  
 V B (SECTION 503)

**ALLOWABLE HEIGHT AND BUILDING AREA LIMITED BY TYPE OF CONSTRUCTION**  
 MAXIMUM HEIGHT IN STORIES (SECTION 503 & 504, TABLE 503) 2  
 MAXIMUM AREA IN SQUARE FEET (SECTION 503, 506 & 507, TABLE 503) 9,000

# WIND SPEED DESIGN REQUIREMENTS

THIS BUILDING SHALL BE DESIGNED WITH IBC SEC 1609 AS A FULLY ENCLOSED BLDG USING THE FOLLOWING INFORMATION:

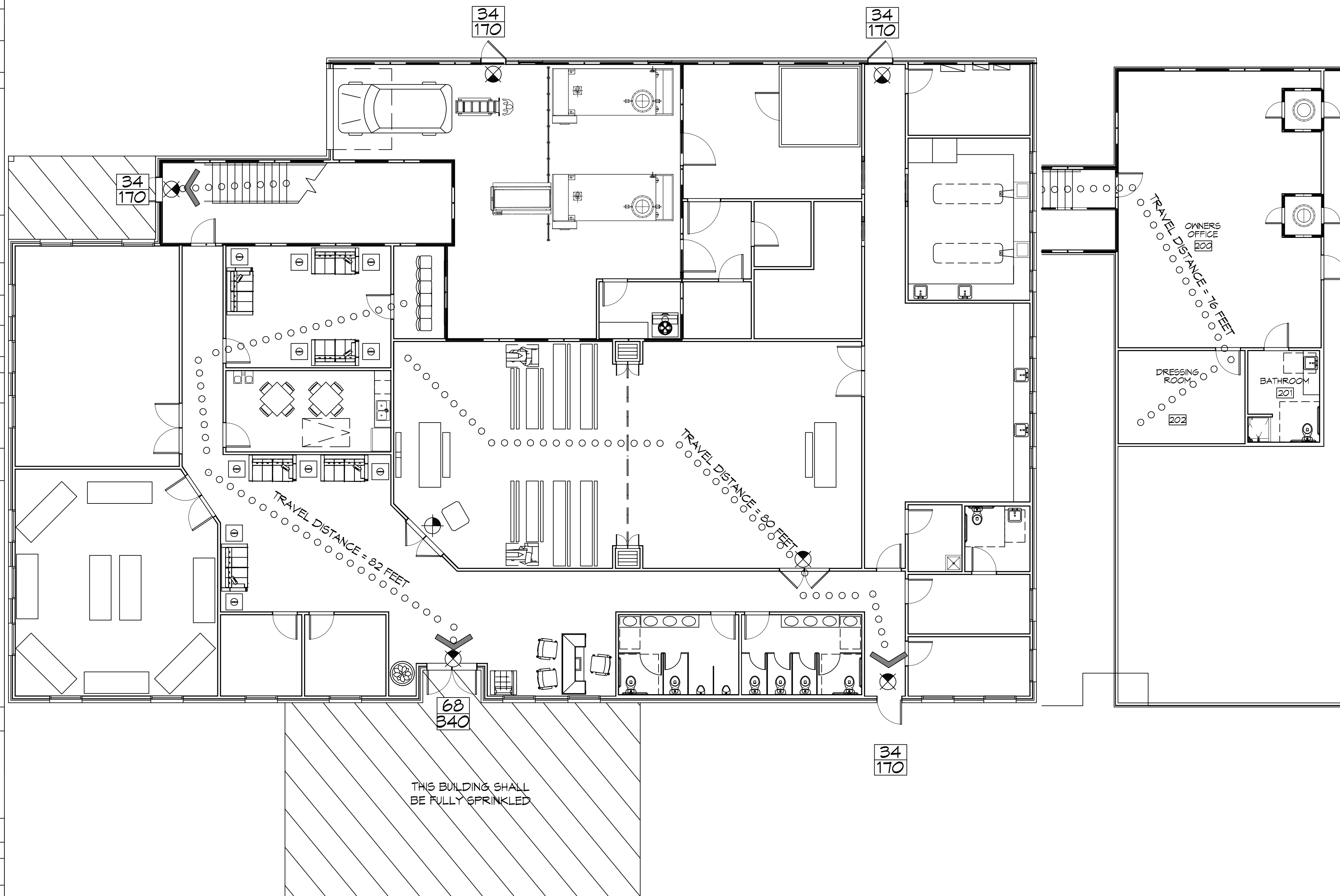
**WIND DESIGN DATA:**  
 DETERMINATION OF WIND LOADS SHALL BE IN ACCORDANCE WITH IBC SEC 1609.3 (A), (B), OR (C) DEPENDING ON THE RISK CATEGORY  
 BASIC WIND SPEED (3 SECOND GUST) = 143 MPH (IBC FIG 1609C)  
 RISK FACTOR: CATEGORY II BLDG SURFACE ROUGHNESS = C  
 TOPOGRAPHIC FACTOR = 1 EXPOSURE = C  
 DESIGN WIND PRESSURE (ASCE 7-10 TABLE 26.6-1): 45.4 PSF  
 INTERNAL PRESSURE COEFFICIENT (ASCE 7-10 TABLE 26.11-1): ± 0.18  
 LIVE LOADS (IBC SEC 1607)  
 ASSEMBLY AREA W/ MOVEABLE SEATS (TABLE 1607.1): 100PSF  
 PUBLIC ROOMS AND CORRIDORS SERVING THEM 100 PSF  
 ROOF LIVE LOADS (BC TABLE 1607.1): 20 PSF UNIFORM, 300 LB CONCENTRATED  
 SNOW LOADS (BC TABLE 1608):  
 GROUND SNOW LOAD (BC FIG 1608.2): 5 PSF

# FLOOD ZONE INFORMATION

BASED ON THE SURVEY OF THIS PROPERTY BY DUFRENE SURVEYING THIS PROPERTY IS NOT IN SPECIAL FLOOD HAZARD AREA. F.I.R.M. COMMUNITY MAP NO 225203 0114 F; REVISED 9/30/2016.  
 FLOOD ZONE: X BASE FLOOD ELEVATION: N/A - NAVD  
 ELEVATIONS REFER TO NAVD 1929 DATUM

# LIFE-SAFETY LEGEND

SYMBOL	DESCRIPTION
>	EXITS
(45)	DOOR FIRE RATINGS (MINUTES)
150	DOOR WIDTH/EGRESS CAPACITY
⊗	EXIT LIGHT
• FE	FIRE EXTINGUISHER W/ WALL MTD BRACKET
-----	COMMON PATH OF TRAVEL
o-o-o-o-o-o-o-o	TRAVEL DISTANCE
●	DECISION POINT

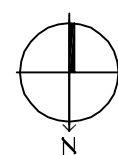


**FIRST FLOOR PLAN**  
 SCALE: 1/8" = 1'-0"

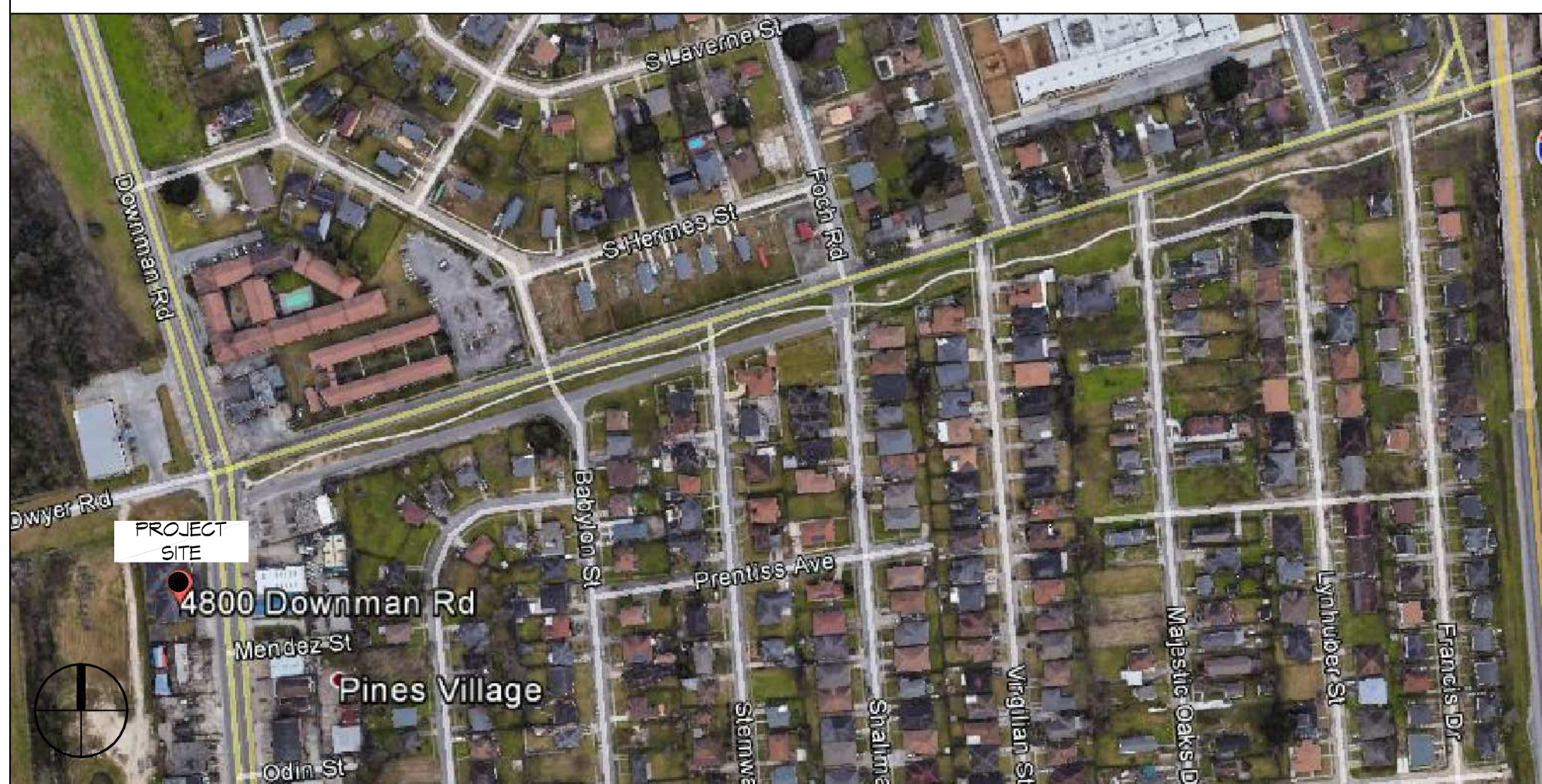
**SECOND FLOOR PLAN**  
 SCALE: 1/8" = 1'-0"

# LIFE-SAFETY PLAN

SCALE: 1/8" = 1'-0"



# VICINITY MAP



# GENERAL NOTES

- ALL MATERIALS AND WORK INCIDENTAL TO THE CONSTRUCTION OF THIS PROJECT, SHALL CONFORM TO ALL GOVERNING CODES, AND REGULATIONS OF AGENCIES IN AUTHORITY.
- CONTRACTOR SHALL PROVIDE ALL PUBLIC PROTECTIONS NECESSARY AS REQUIRED BY LAW.
- THE DRAWINGS AND ANY SUBSEQUENTLY ISSUED ADDENDA, AMENDMENTS OR SUCH CHANGE ORDERS APPROVED BY THE OWNER AND THE CONTRACTOR ARE PART OF THESE CONTRACT DOCUMENTS.
- DO NOT SCALE DRAWINGS.** CONSULT WITH THE ENGINEER REGARDING ANY ITEMS IN THE CONTRACT DOCUMENTS THAT REQUIRE CLARIFICATION.
- TRASH SHALL BE REMOVED FROM THE SITE NOT LESS THAN TWICE MONTHLY.
- THE GENERAL CONTRACTOR SHALL VERIFY EXISTING CONDITIONS PRIOR TO COMMENCING WORK AND REPORT ANY AND ALL DISCREPANCIES TO THE ARCHITECT.
- CONTRACTOR VEHICLES AND EQUIPMENT NECESSARY FOR CONSTRUCTION MAY BE PARKED ON THE SITE. OTHER VEHICLES PARKED ON THE SITE REQUIRE THE OWNER'S PERMISSION.
- ALL MATERIALS/EQUIPMENT SHALL BE INSTALLED PER MANUFACTURER'S RECOMMENDATIONS. WORK NOT CONSISTENT WITH MANUFACTURER'S RECOMMENDATIONS WILL BE REJECTED BY OWNER/ARCHITECT.

# SHEET INDEX

SHEET #	SHEET TITLE
G101	GENERAL INFORMATION SHEET
G102	ACCESSIBILITY INFORMATION
C101	SITE PLAN
C102	PAVING PLAN
S100	DEMO FLOOR PLAN
S101	FOUNDATION PLAN AND DETAILS
S102	TYPICAL CONNECTION DETAILS, SCHEDULES AND NOTES
A101	FIRST FLOOR FLOOR PLAN
A102	SECOND FLOOR FLOOR PLAN
A103	ARCHITECTURAL NOTES AND SCHEDULES
A104	REFLECTED CEILING PLANS
A105	BUILDING SECTION
A106	EXTERIOR ELEVATIONS
A107	EXTERIOR ELEVATIONS
P101	PLUMBING AND RISER PLAN
M101	MECHANICAL FIRST FLOOR PLAN
M102	MECHANICAL SECOND FLOOR PLAN, SCHEDULES & DETAILS
E100	SITE ELECTRICAL PLAN
E101	FIRST FLOOR POWER PLAN
E102	FIRST FLOOR LIGHTING PLAN
E103	SECOND FLOOR POWER PLAN
E104	SECOND FLOOR LIGHTING PLAN
E105	PANEL SCHEDULES

**DAMMON ENGINEERING, INC.**  
 LOUISIANA & MISSISSIPPI

REVISIONS	DATE	DESCRIPTION

SEAL:

NEW FUNERAL HOME  
**BOYER FAMILIOME**  
 4800 DOWNMAN ROAD  
 NEW ORLEANS, LA

SHEET TITLE:  
**GENERAL INFORMATION SHEET**

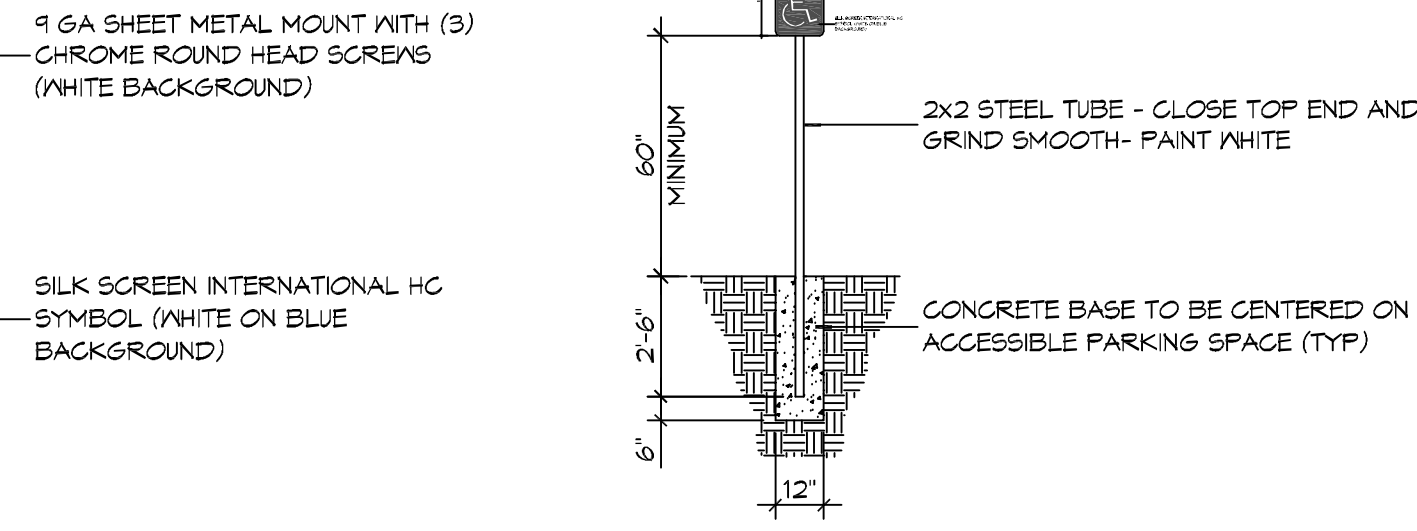
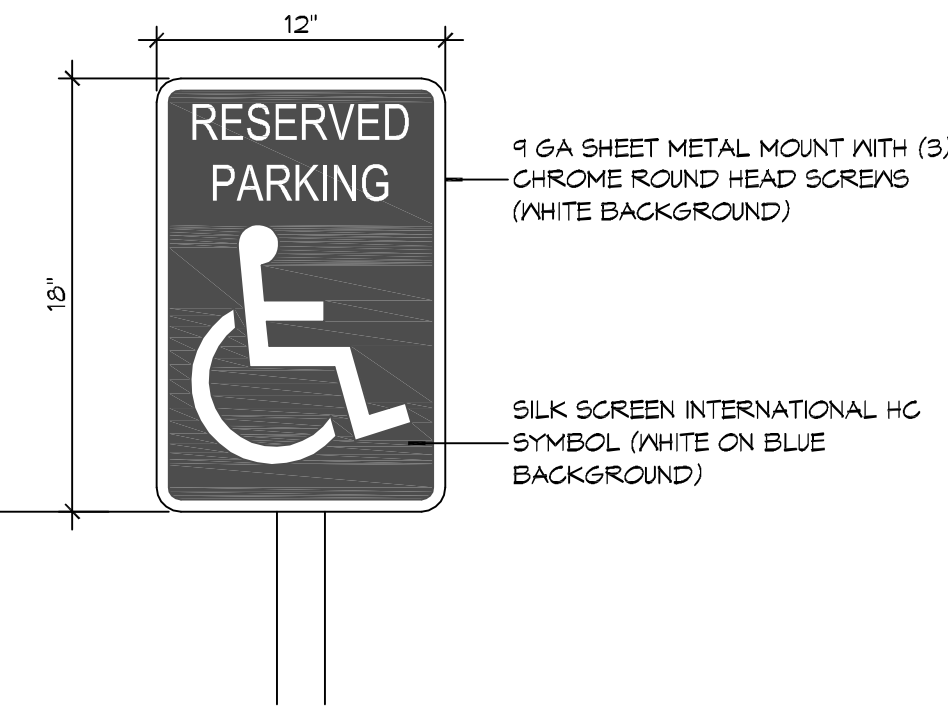
DRAWING NUMBER:  
**G101**

SHEET No: 1 of # 23

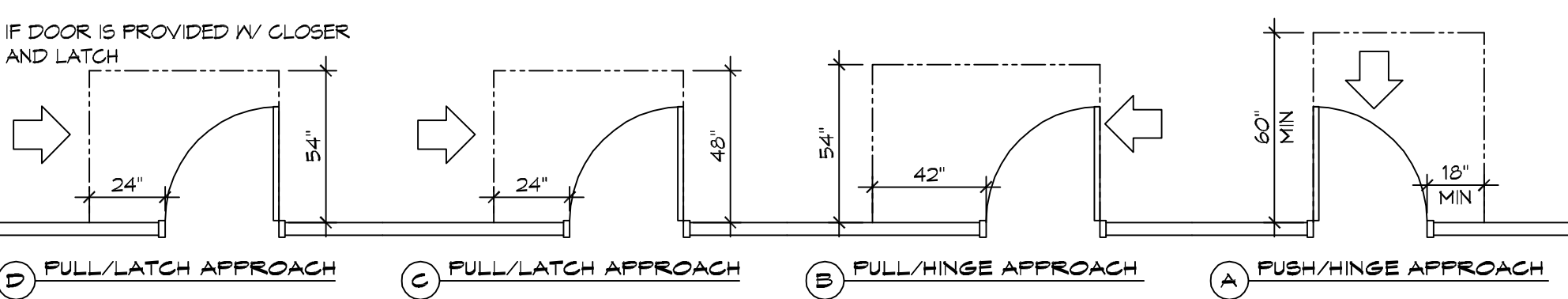
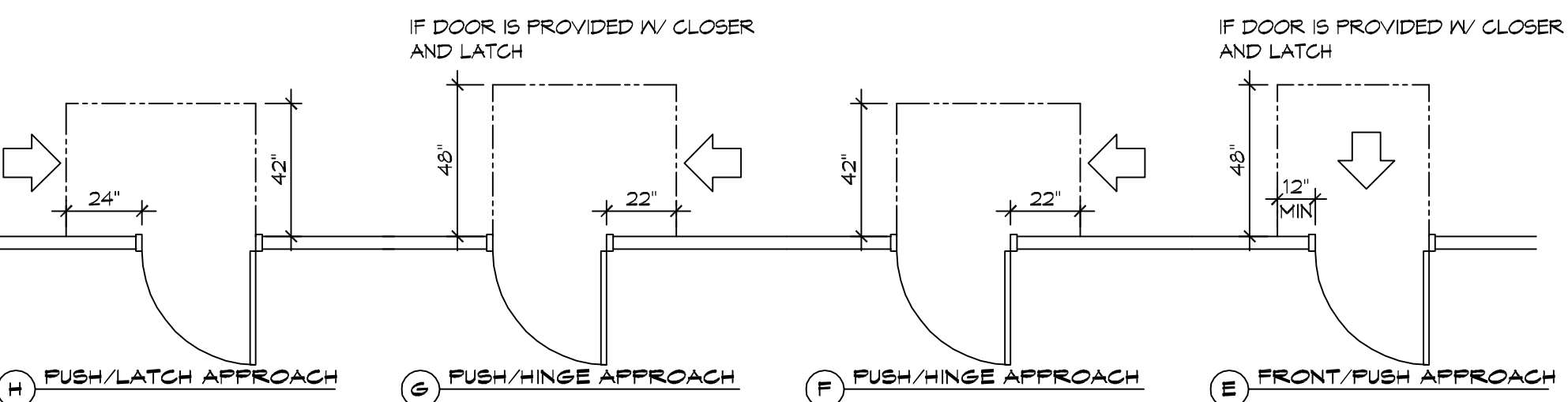
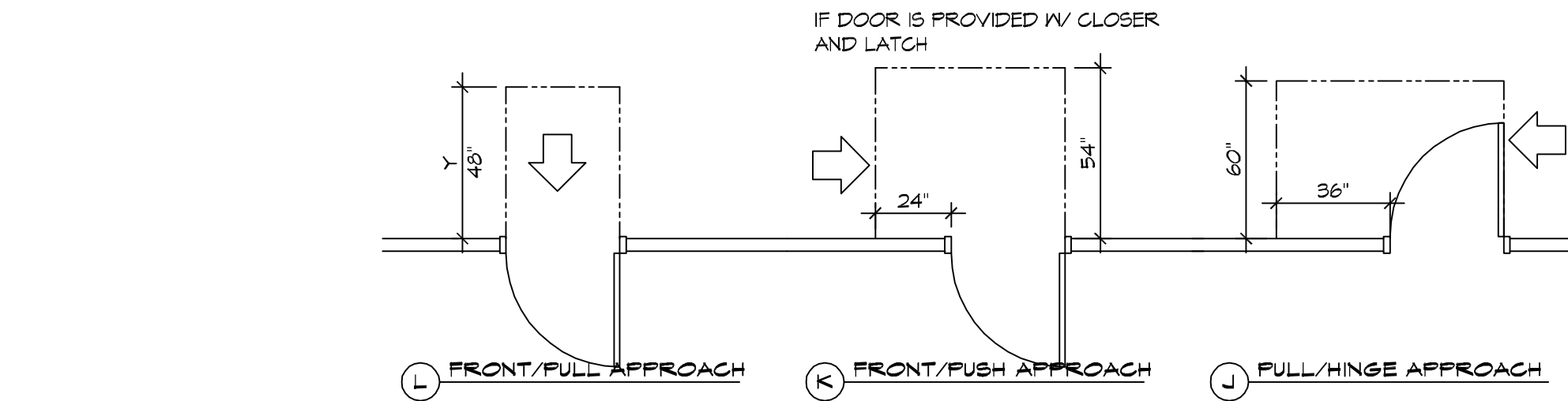
Chief Engineer: Brian Welch, PE  
 554 Old Spanish Trail  
 St. Louis, LA 70498  
 www.dammonengineering.com  
 info@dammonengineering.com  
 PH: 985.649.8832

DATE: 04-03-2014  
 25%  
 CHECKED BY: CKD

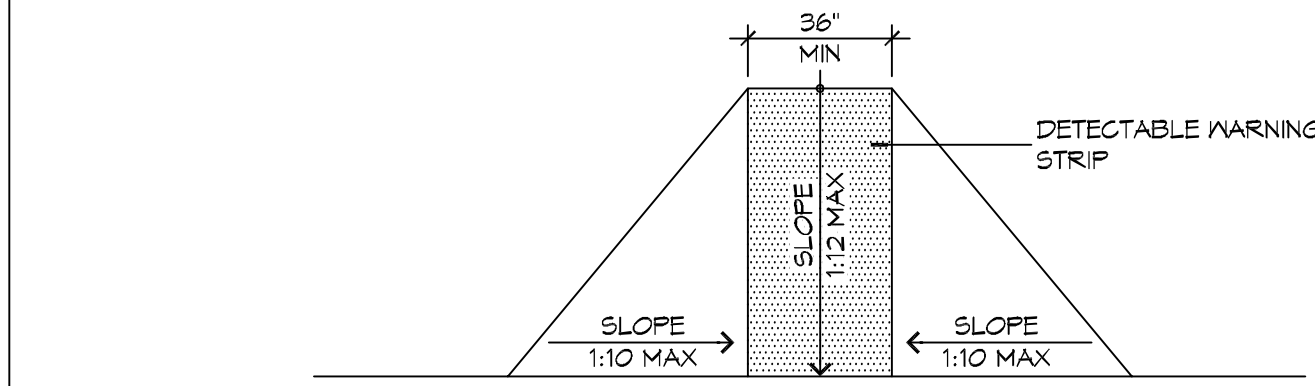
FILE NAME: A:\Projects\2018\2018-03-01\2018-03-01.dwg  
 PLOT DATE: 3/1/2018 10:00 AM  
 PLOT BY: J. B. BROWN  
 PLOT SCALE: 1/4" = 1'-0"



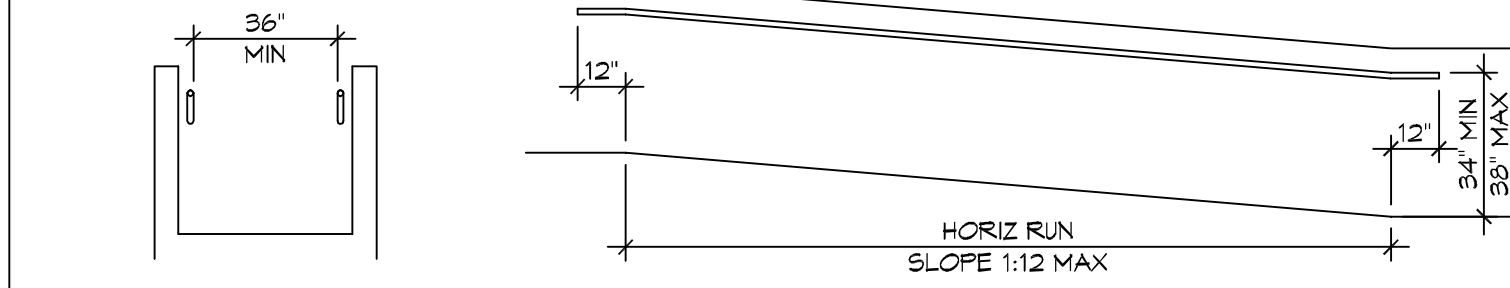
**5 ACCESSIBLE SIGN**  
 SCALE: NTS



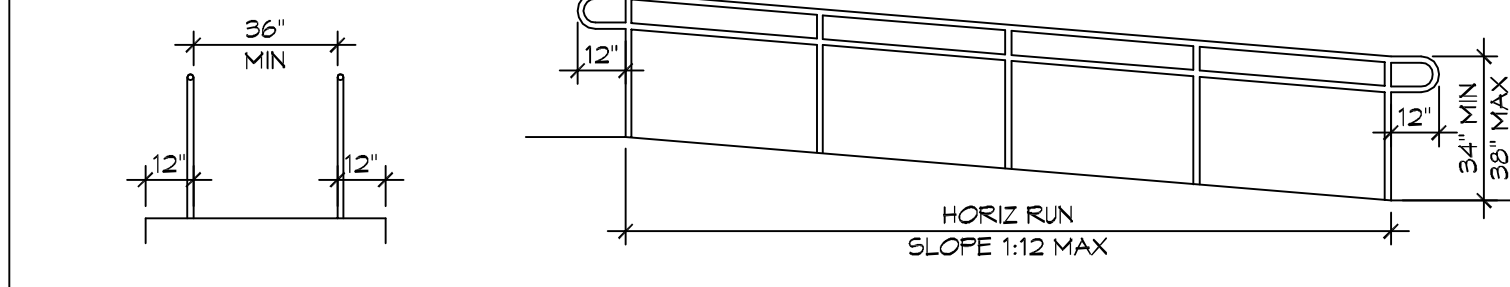
**3 ADA DOOR CLEARANCES**  
 SCALE: 1/4" = 1'-0"



F FLARED RAMPS

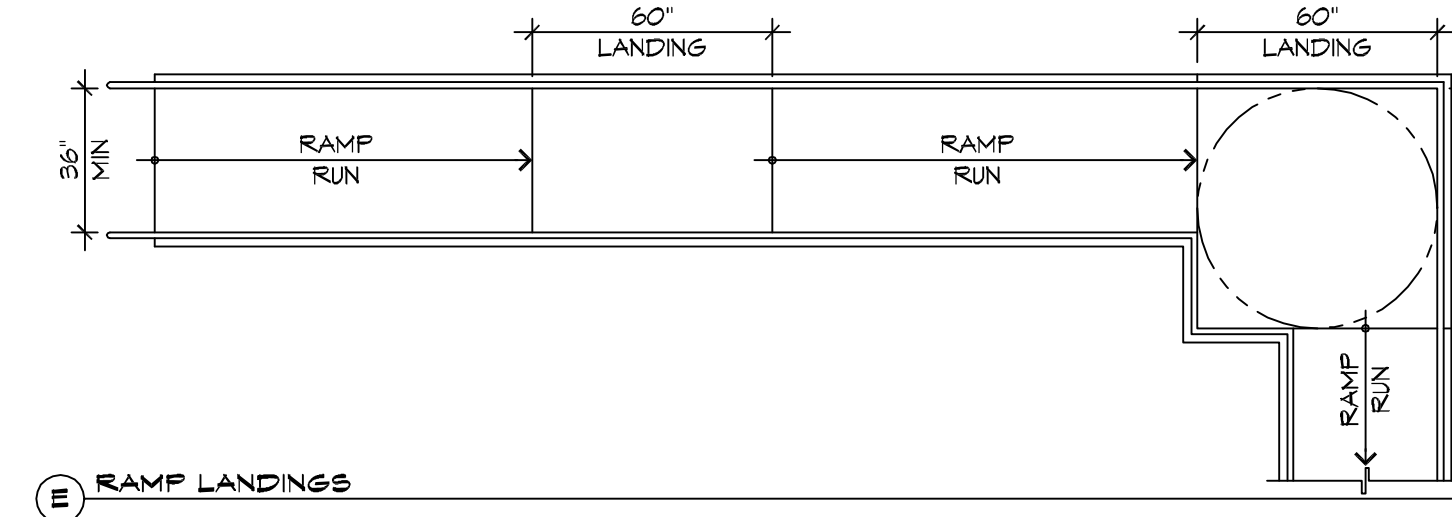


D WALL EDGE PROTECTION

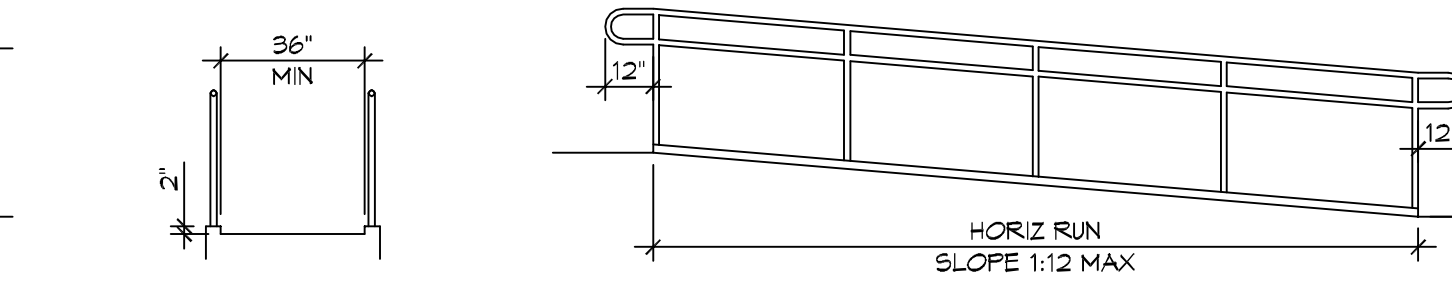


B EXTENDED SURFACE EDGE PROTECTION

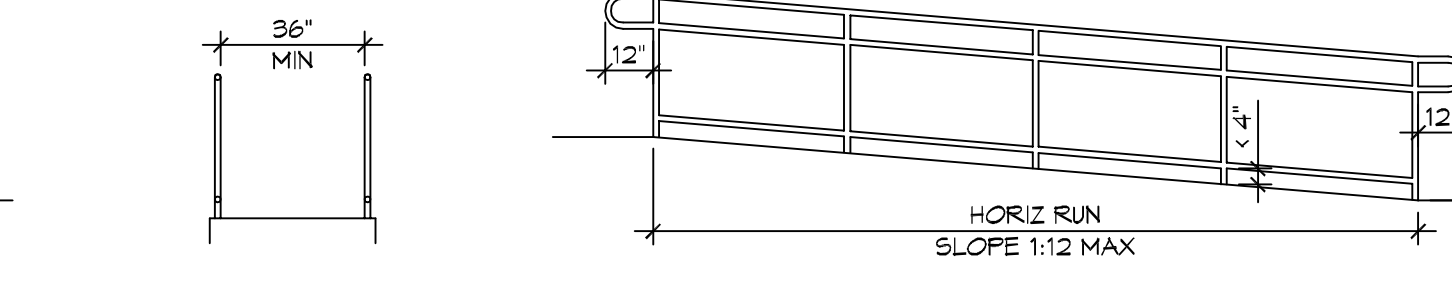
**4 ACCESSIBLE RAMPS**  
 SCALE: 1/4" = 1'-0"



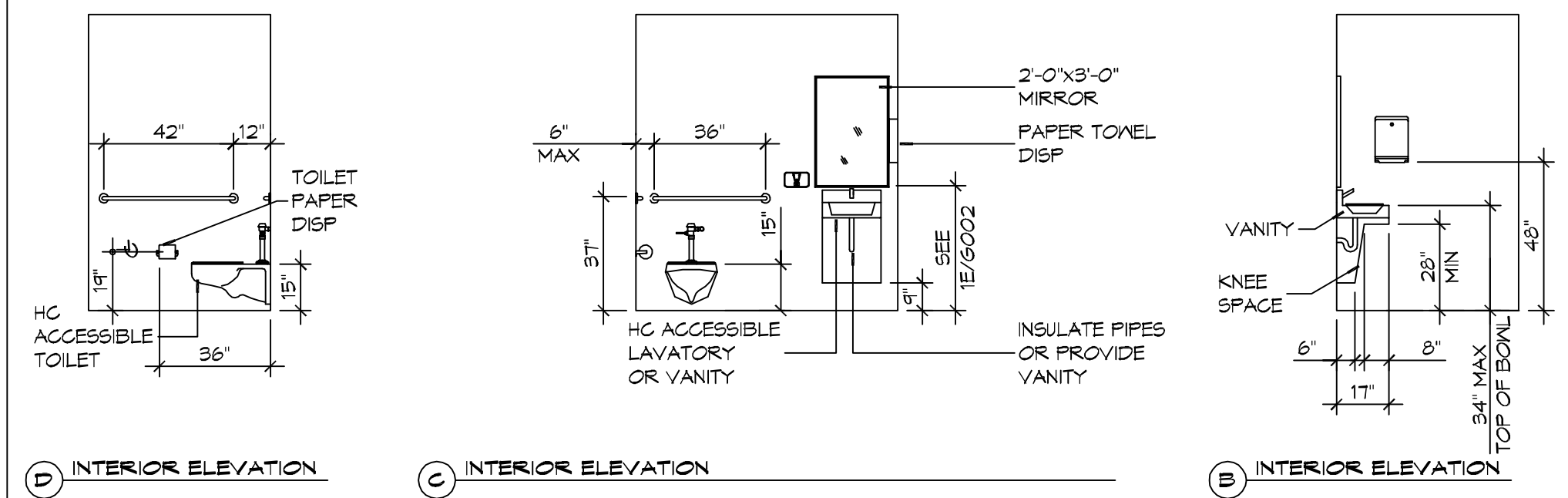
E RAMP LANDINGS



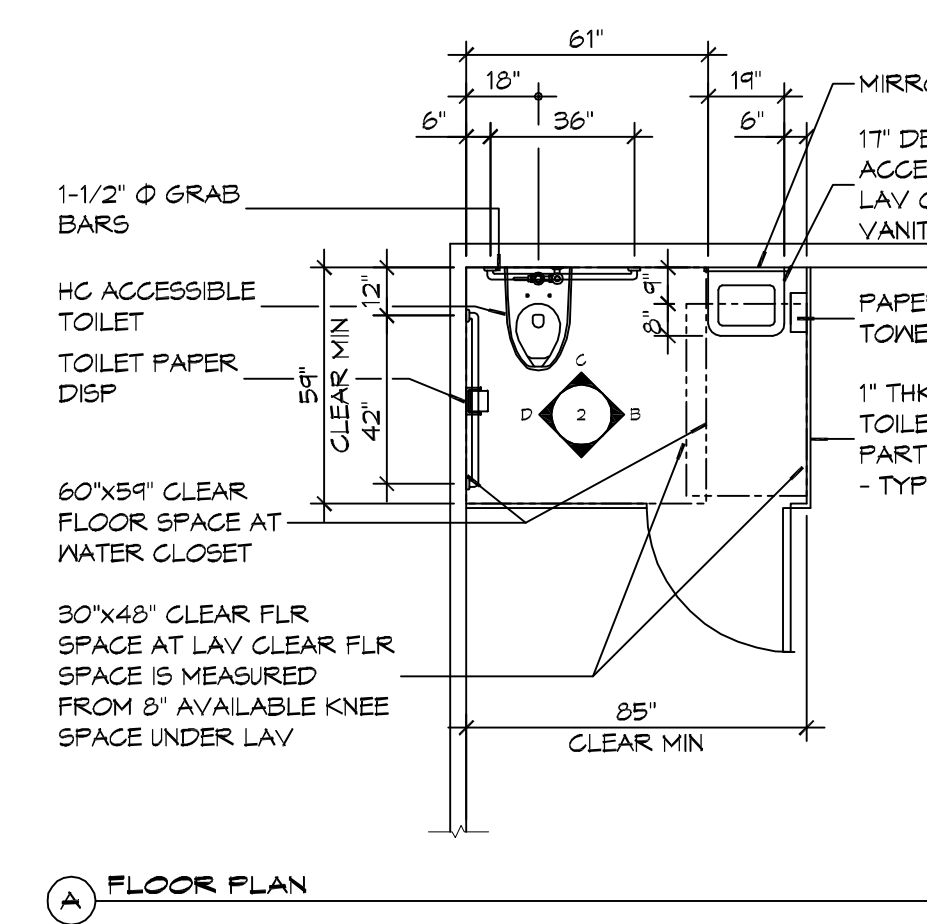
C CURB EDGE PROTECTION



A BARRIER EDGE PROTECTION



**2 RESTROOM CLEARANCES**  
 SCALE: 1/4" = 1'-0"



A FLOOR PLAN

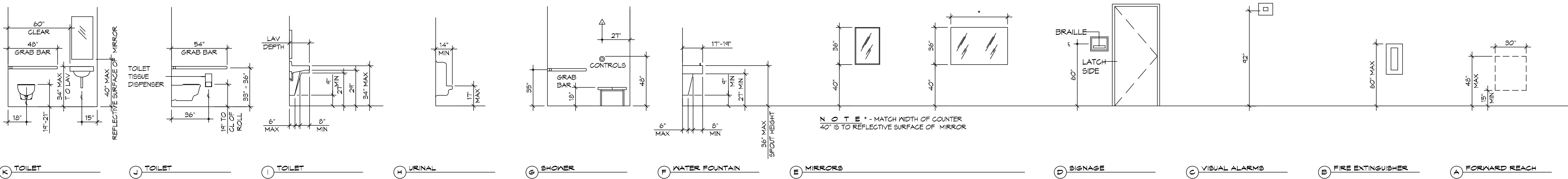
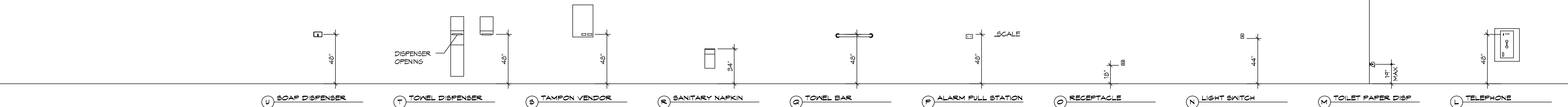
**ACCESSIBILITY NOTES**

**DOOR CLEARANCE NOTES**  
 ALCOVES SHALL COMPLY WITH THE CLEARANCES FOR FRONT APPROACHES, 31/6002 - 31/6002.  
 DOOR HARDWARE SHALL BE LEVER TYPE.  
 MAX DOOR OPENING FORCE:  
 INTERIOR HINGED DOORS: 5 LBF  
 EXTERIOR HINGED DOORS: 8.5 LBF  
 SLIDING OR FOLDING DOORS: 5 LBF  
 FIRE DOORS SHALL HAVE THE MINIMUM OPENING FORCE ALLOWABLE BY THE APPROPRIATE ADMINISTRATIVE AUTHORITY.  
 HARDWARE REQUIRED FOR ACCESSIBLE DOOR PASSAGE SHALL BE MOUNTED NO HIGHER THAN 48" AND NOT LESS THAN 34" ABOVE FINISHED FLOOR.  
 THE FLOOR OR GROUND AREA WITHIN THE REQUIRED CLEARANCES SHALL BE LEVEL AND CLEAR.  
 THRESHOLDS AT DOORWAYS SHALL NOT EXCEED 3/4" IN HEIGHT FOR EXTERIOR SLIDING DOORS OR 1/2" FOR OTHER TYPES OF DOORS. RAISED THRESHOLDS AND FLOOR LEVEL CHANGES AT ACCESSIBLE DOORWAYS SHALL BE BEVELED WITH A SLOPE NO GREATER THAN 1:2.  
 DOORWAYS SHALL HAVE A MINIMUM CLEAR OPENING OF 32" WITH THE DOOR OPEN 90°, MEASURED BETWEEN THE FACE OF THE DOOR AND THE OPPOSITE STOP. OPENINGS MORE THAN 24" IN DEPTH SHALL MAINTAIN 32" MIN CLEARANCE.

**RAMP NOTES**  
 THE CLEAR SPACE BETWEEN THE HANDRAIL AND THE WALL SHALL BE MIN 1-1/2" CLEAR.  
 GRIPPING SURFACES SHALL BE CONTINUOUS AND UNOBSTRUCTED.  
 ENDS OF HANDRAILS SHALL BE EITHER ROUNDED OR RETURNED SMOOTHLY TO FLOOR, WALL, OR POST.  
 HANDRAILS SHALL NOT ROTATE WITHIN THEIR FITTINGS.  
 THE CROSS SLOPE OF RAMP SURFACES SHALL BE NO GREATER THAN 1:50.  
 OUTDOOR RAMPS AND THEIR APPROACHES SHALL BE DESIGNED SO THAT WATER WILL NOT ACCUMULATE ON WALKING SURFACES.  
 RAMPS AND LANDINGS WITH DROP-OFFS SHALL HAVE CURBS, WALLS, RAILINGS, OR PROJECTING SURFACES THAT PREVENT PEOPLE FROM SLIPPING OFF THE RAMP. CURBS SHALL BE A MINIMUM OF 2" HIGH.  
 HANDRAILS SHALL BE PROVIDED ALONG BOTH SIDES OF RAMP SEGMENTS. THE INSIDE HANDRAIL ON SWITCHBACK OR DOGLEG RAMPS SHALL ALWAYS BE CONTINUOUS.  
 RAMP LANDINGS SHALL BE AT LEAST AS WIDE AS THE RAMP RUN LEADING TO IT.

**GENERAL SITE ACCESSIBILITY NOTES**

1. ACCESSIBILITY SIGNAGE SHALL COMPLY WITH ADAAG 2010 GUIDELINES SECTION 703.7.
2. SEE SHEET 0003 FOR ACCESSIBLE RAMP AND HANDRAIL DESIGNS WHERE THEY OCCUR.
3. ALL ACCESSIBLE PARKING SPACES AND AISLES THAT SERVE THEM SHALL COMPLY WITH ADAAG 2010 GUIDELINES SECTIONS 502.2 AND 502.5.
4. OPENINGS IN GROUND SURFACES SHALL COMPLY WITH ADAAG 2010 GUIDELINES SECTION 302.3.
5. VERTICAL CHANGES IN ELEVATION ALONG ALL ACCESSIBLE ROUTES SHALL COMPLY WITH ADAAG 2010 GUIDELINES SECTIONS 303.2, 303.3, AND 303.4.
6. PARKING SPACES DESIGNATED AS ACCESSIBLE SHALL INCLUDE THE INTERNATIONAL SYMBOL OF ACCESSIBILITY COMPLYING WITH ADAAG 2010 GUIDELINES SECTIONS 703.7.2.1 AND 502.6.
7. ALL ACCESSIBLE PARKING SPACES AND ROUTES SERVING THEM SHALL HAVE A ROUGH, SLIP-RESISTANT SURFACE OR LIGHT BROOM FINISH IN COMPLIANCE WITH ADAAG 2010 GUIDELINES SECTION 502.1.



**1 MOUNTING HEIGHTS**  
 SCALE: 1/4" = 1'-0"

**DAMMON ENGINEERING, INC.**  
 LOUISIANA & MISSISSIPPI

Chief Engineer: Brian Abatch, PE  
 554 Old Spanish Trail  
 Slidell, LA 70488

DATE: 04-05-2018  
 DATE: 2996  
 JOB No: 18000  
 DRAWN BY: CND  
 CHECKED BY: CND

NEW FUNERAL HOME  
 BOYER FALMLOME  
 FUNERAL HOME  
 4800 DOWNMAN ROAD  
 NEW ORLEANS, LA

SHEET TITLE:  
 ACCESSIBILITY INFORMATION

DRAWING NUMBER:  
**G102**

SHEET No: 2 of 23









**TABLE S107.7 - UPLIFT CONNECTIONS - 143 MPH WINDS EXP "C"**

CONNECTION	FRAMING SPACING (INCHES)	ROOF SPAN (FEET)	UPLIFT			NUMBER OF 8d COMMON NAILS OR 10d BOX NAILS IN EACH END OF 1-1/4"x20 GAGE STRAP
			LATERAL	DIAGONAL	VERTICAL	
ROOF ASSEMBLY TO WALL ASSEMBLY	16" OC	16	401	292	152R	4
WALL ASSEMBLY TO FOUNDATION	16" OC	16	224	219	436	4

**TABLE S107.8 - SILL OR BOTTOM PLATE TO FOUNDATION CONNECTIONS RESISTING UPLIFT LOADS - 143 MPH WIND EXP "C"**

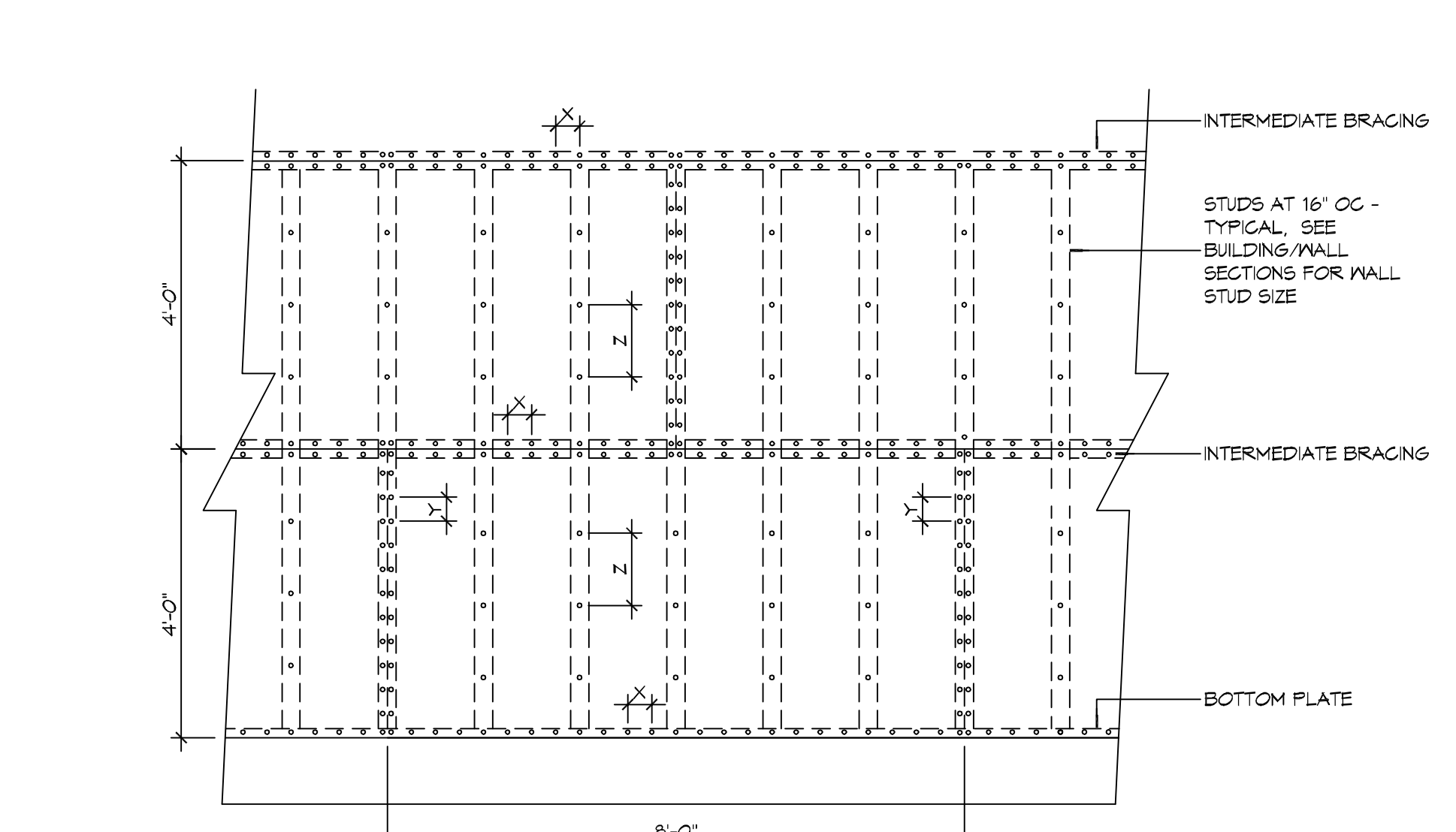
BOTTOM PLATE TO FOUNDATION ANCHOR BOLT CONNECTION RESISTING UPLIFT LOADS	FOUNDATION SUPPORTING	MAXIMUM ANCHOR BOLT SPACING (INCHES)	
		8' END ZONES	INTERIOR ZONES
UPLIFT LOADS	1 - 3 STORIES	25 INCHES ON CENTER	30 INCHES ON CENTER
		NOTE: A MINIMUM OF ONE ANCHOR BOLT SHALL BE PROVIDED WITHIN 6 TO 12 INCHES OF EACH END OF EACH PLATE	

**TABLE S107.9 - SILL OR BOTTOM PLATE TO FOUNDATION CONNECTIONS RESISTING SHEAR LOADS - 143 MPH WIND EXP "C"**

BOTTOM PLATE TO FOUNDATION ANCHOR BOLT CONNECTION RESISTING UPLIFT LOADS	FOUNDATION SUPPORTING	MAXIMUM ANCHOR BOLT SPACING (INCHES)	
		5/8" Ø ANCHOR BOLTS	48 INCHES ON CENTER W/3X3X1/4" WASHER
UPLIFT LOADS	4 STORY	5/8" Ø ANCHOR BOLTS	48 INCHES ON CENTER W/3X3X1/4" WASHER

**TABLE S107.10 - FULL HEIGHT STUD REQUIREMENT FOR HEADERS OR WINDOW SILL PLATES IN EXTERIOR WALLS EXPOSURE "C"**

HEADER SPAN (FEET)	WALL SPACING (INCHES)		
	12" O.C.	16" O.C.	24" O.C.
2	1	1	1
4	2	2	1
6	3	3	2
8	4	3	2



**NAIL SPACING**  
 X = 4" OC  
 Y = 4" OC  
 Z = 12" OC

X = PLATE EDGE NAIL SPACING  
 Y = LONG EDGE NAIL SPACING  
 Z = FIELD NAIL SPACING

**INTERIOR SHEATHING**  
 1/2" PLYWOOD EACH FACE STAGGERED 48" OC. W/8d NAILS @ 4" O.C. FASTENING @ PANEL EDGES @ 12" O.C. FASTENING @ INTERMEDIATE MEMBERS.

**EXTERIOR SHEATHING**  
 5/8" DENSGLASS SHEATHING EXTERIOR FACE STAGGERED 48" O.C. FASTENING @ PANEL EDGES @ 10"x11" TEK SCREWS @ 12" O.C. FASTENING @ INTERMEDIATE MEMBERS.

**TABLE S107.5 - JACK STUD REQ - INT LOADBEARING WALLS**

HEADER SUPPORTING	HEADER SPAN (FT)	ROOF SPAN (FEET)													
		12 FEET				24 FEET				36 FEET					
		3"	4.5"	5"	6.5"	3"	4.5"	5"	6.5"	3"	4.5"	5"	6"		
ONE FLOOR ONLY (CENTER BEARING)	2	1	1	1	1	1	1	1	1	1	1	1	1	1	1
	4	1	1	1	1	1	1	1	1	1	1	1	1	1	1
	6	1	1	1	1	1	1	1	1	2	1	1	1	1	1
	8	1	1	1	1	2	1	1	1	2	2	2	1	1	1
	10	1	1	1	1	2	2	1	1	3	2	2	2	2	2
	12	1	1	1	1	2	2	2	1	3	2	2	2	2	2
	14	2	1	1	1	3	2	2	2	4	3	3	2	2	2
	16	2	2	1	1	3	2	2	2	4	3	3	2	2	2
	2	1	1	1	1	1	1	1	1	2	1	1	1	1	1
	4	1	1	1	1	2	1	1	1	3	2	2	2	2	2
6	2	1	1	1	3	2	2	2	4	3	2	2	2	2	
8	2	2	1	1	3	2	2	2	5	3	3	3	3	3	
10	2	2	2	1	4	3	3	2	6	4	4	4	4	4	
12	3	2	2	2	5	3	3	3	7	5	4	4	4	4	
14	3	2	2	2	6	4	4	3	8	5	5	4	4	4	
16	4	3	2	2	6	4	4	3	9	6	6	5	4	4	

**TABLE S107.6 - JACK STUD REQ - EXTERIOR LOADBEARING WALLS**

ROOF AND CEILING	HEADER WIDTH - 3" (2-2X), 4.5" (3-2X), 5", 6.5" (4-2X) EACH W/ 1/2" PLYWOOD SPACER BETWEEN (MITERED CORNER)	ROOF LIVE LOAD 20 PSF				ROOF LIVE LOAD 30 PSF			
		3"	4.5"	5"	6.5"	3"	4.5"	5"	6.5"
		NUMBER OF JACK STUDS REQUIRED							
2		1	1	1	1	1	1	1	1
4		1	1	1	1	1	1	1	1
6		2	1	1	1	2	1	1	1
8		2	2	2	1	2	2	2	1
10		3	2	2	2	3	2	2	2
12		3	2	2	2	3	2	2	2
14		4	3	2	2	4	3	2	2
16		4	3	3	2	4	3	3	2
2		1	1	1	1	1	1	1	1
4		2	1	1	1	2	1	1	1
6		2	2	2	1	3	2	2	2
8		3	2	2	2	3	2	2	2
10		4	3	2	2	4	3	3	2
12		4	3	3	2	5	3	3	3
14		5	4	3	3	5	4	3	3
16		6	4	4	3	6	4	4	3

**TABLE S107.3 - NAILING SCHEDULE WFCM 2015 TABLE 3.1**

DESCRIPTION	NUMBER OF COMMON NAILS	NUMBER OF BOX NAILS	SPACING
HEADER TO HEADER (FACE NAILED)	16d	16d	16" OC EDGES

**TABLE S107.4 - BUILDING ENVELOPE REQUIREMENTS**

ROOFS	OPAQUE ELEMENTS	ASSEMBLY MAXIMUM	INSULATION MIN. R-VALUE
METAL BUILDING	INSULATION ENTIRELY ABOVE DECK	U-0.048	R-20.0 c.i.
ATTIC AND OTHER		U-0.027	R-38
MASS		U-0.151	R-5.7 c.i.
METAL BUILDING		U-0.113	R-13.0
STEEL-FRAMED		U-0.124	R-13.0
WOOD-FRAMED AND OTHER		U-0.084	R-13.0
MASS		U-0.107	R6-3 c.i.
STEEL JOIST		U-0.052	R-19.0
WOOD FRAMED AND OTHER		U-0.051	R-19.0
SLAB-ON-GRADE	UN-HEATED	F-0.130	NR
OPAQUE DOORS	SWINGING	U-0.100	NR
	NON-SWINGING	U-1.450	NR

**ROOF UNDERLAYMENT NOTES**

1. FOR ROOF SLOPES FROM TWO UNITS VERTICAL IN 12 UNITS HORIZONTAL (17-PERCENT SLOPE), UP TO FOUR UNITS VERTICAL IN 12 UNITS HORIZONTAL (33-PERCENT SLOPE), UNDERLAYMENT SHALL BE TWO LAYERS APPLIED IN THE FOLLOWING MANNER:  
 a. APPLY A 14 INCH STRIP OF UNDERLAYMENT FELT PARALLEL WITH AND STARTING AT THE EAVES, FASTENED SUFFICIENTLY TO HOLD IN PLACE.  
 b. STARTING AT THE EAVE, APPLY 36 INCH WIDE SHEETS OF UNDERLAYMENT, OVERLAPPING SUCCESSIVE SHEETS 14 INCHES, AND FASTENED SUFFICIENTLY TO HOLD IN PLACE.  
 2. FOR ROOF SLOPES OF FOUR UNITS VERTICAL IN 12 UNITS HORIZONTAL (33-PERCENT SLOPE) OR GREATER, UNDERLAYMENT SHALL BE ONE LAYER APPLIED IN THE FOLLOWING MANNER:  
 a. UNDERLAYMENT SHALL BE APPLIED SINGLE FASHION, PARALLEL TO AND STARTING FROM THE EAVE AND LAPPED 2 INCHES, FASTENED SUFFICIENTLY TO HOLD IN PLACE. END LAPS SHALL BE OFFSET BY 6 FEET.

**ROOF APPLICATION & FASTENING NOTES**

1. INSTALL ROOF PER MANUFACTURERS RECOMMENDATIONS FOR 130MPH WIND SPEED.

**GENERAL UPLIFT CONNECTION NOTES**

**ROOF ASSEMBLY TO WALL ASSEMBLY:**  
 UPLIFT CONNECTIONS SHALL BE FROM RAFTER OR TRUSS TO WALL STUD. WHEN RAFTERS OR TRUSSES ARE NOT LOCATED DIRECTLY ABOVE STUDS, RAFTERS SHALL BE ATTACHED TO THE WALL PLATE AND THE WALL TOP PLATE SHALL BE ATTACHED TO THE WALL STUD WITH UPLIFT CONNECTIONS.

**WALL ASSEMBLY TO WALL ASSEMBLY:**  
 STORY TO STORY UPLIFT CONNECTIONS FROM UPPER STORY WALL STUD TO LOWER STORY WALL STUD. WHEN UPPER STORY WALL STUDS ARE NOT LOCATED DIRECTLY ABOVE LOWER WALL STUDS, THE STUDS SHALL BE ATTACHED TO A COMMON MEMBER IN THE FLOOR ASSEMBLY BY UPLIFT CONNECTIONS.

**WALL ASSEMBLY TO FOUNDATION:**  
 FIRST FLOOR WALL STUDS SHALL BE CONNECTED TO THE FOUNDATION SILL, PLATE, OR BOTTOM PLATE. A MINIMUM OF A 1-1/4" x 20 GA. ASTM A653 GRADE 33 STEEL STRAP SHALL BE NAILED TO THE WALL STUDS AND HAVE A MINIMUM EMBEDMENT OF 7 INCHES IN CONCRETE FOUNDATIONS AND SLABS-ON-GRADE, 15 INCHES IN MASONRY BLOCK FOUNDATIONS, OR BE LAPPED UNDER THE BOTTOM PLATE. 3 INCH SQUARE WASHERS SHALL BE USED ON THE ANCHOR BOLTS AND ANCHOR BOLT SPACINGS SHALL NOT EXCEED THE REQUIREMENTS. STEEL STRAPS EMBEDDED IN OR IN CONTACT WITH SLAB-ON-GRADE OR MASONRY BLOCK FOUNDATIONS SHALL BE HOT-DIPPED GALV. AFTER FABRICATION, OR MANUF. FROM G185 OR Z450 GALV. STL.

**TABLE S107.1 - ROOF SHEATHING OR CLADDING REQUIREMENT - WIND LOAD EXP "C"**

SHEATHING LOCATION	RAFTER / TRUSS SPACING	E		F	
		MAX NAIL SPACING FOR 8d COMMON NAILS (INCHES OC)		MAX NAIL SPACING FOR 8d COMMON NAILS (INCHES OC)	
INTERIOR ZONE	12" OC	6	12		
	16" OC	6	12		
	24" OC	6	6		
PERIMETER EDGE ZONE	12" OC	6	6		
	16" OC	4	4		
	24" OC	3	3		

130 MPH WIND - EXPOSURE "C" TYPICAL.  
 E = NAIL SPACING AT PANEL EDGES, INCHES.  
 F = NAIL SPACING AT INTERMEDIATE SUPPORTS IN THE PANEL FIELD, INCHES.



**TYPICAL CONNECTION DETAILS**

SCALE: NTS

**TABLE S107.3 - NAILING SCHEDULE WFCM 2015 TABLE 3.1**

DESCRIPTION	NUMBER OF COMMON NAILS	NUMBER OF BOX NAILS	SPACING
HEADER TO HEADER (FACE NAILED)	16d	16d	16" OC EDGES

**TABLE S107.4 - BUILDING ENVELOPE REQUIREMENTS**

ROOFS	OPAQUE ELEMENTS	ASSEMBLY MAXIMUM	INSULATION MIN. R-VALUE
METAL BUILDING	INSULATION ENTIRELY ABOVE DECK	U-0.048	R-20.0 c.i.
ATTIC AND OTHER		U-0.027	R-38
MASS		U-0.151	R-5.7 c.i.
METAL BUILDING		U-0.113	R-13.0
STEEL-FRAMED		U-0.124	R-13.0
WOOD-FRAMED AND OTHER		U-0.084	R-13.0
MASS		U-0.107	R6-3 c.i.
STEEL JOIST		U-0.052	R-19.0
WOOD FRAMED AND OTHER		U-0.051	R-19.0
SLAB-ON-GRADE	UN-HEATED	F-0.130	NR
OPAQUE DOORS	SWINGING	U-0.100	NR
	NON-SWINGING	U-1.450	NR

**ROOF APPLICATION & FASTENING NOTES**

1. INSTALL ROOF PER MANUFACTURERS RECOMMENDATIONS FOR 130MPH WIND SPEED.

**GENERAL UPLIFT CONNECTION NOTES**

**ROOF ASSEMBLY TO WALL ASSEMBLY:**  
 UPLIFT CONNECTIONS SHALL BE FROM RAFTER OR TRUSS TO WALL STUD. WHEN RAFTERS OR TRUSSES ARE NOT LOCATED DIRECTLY ABOVE STUDS, RAFTERS SHALL BE ATTACHED TO THE WALL PLATE AND THE WALL TOP PLATE SHALL BE ATTACHED TO THE WALL STUD WITH UPLIFT CONNECTIONS.

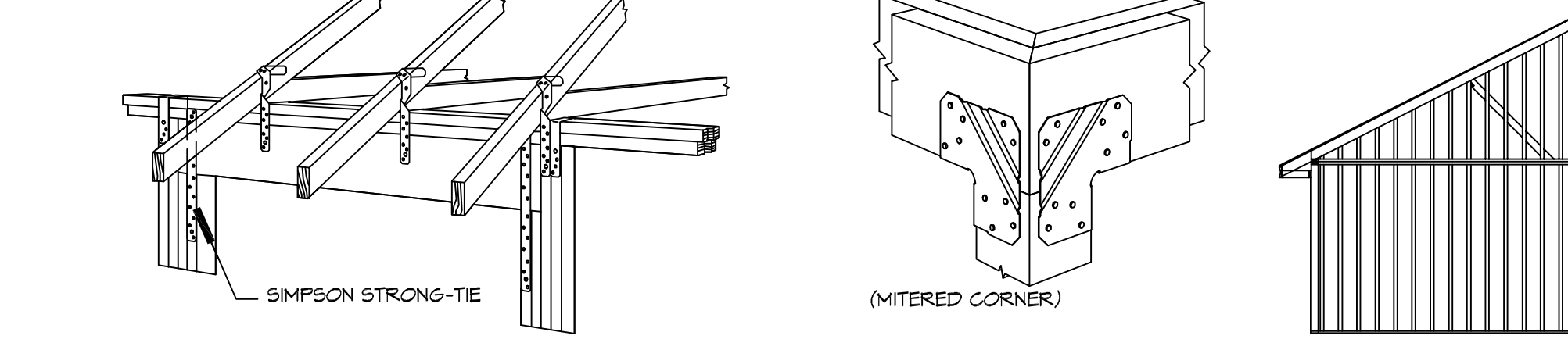
**WALL ASSEMBLY TO WALL ASSEMBLY:**  
 STORY TO STORY UPLIFT CONNECTIONS FROM UPPER STORY WALL STUD TO LOWER STORY WALL STUD. WHEN UPPER STORY WALL STUDS ARE NOT LOCATED DIRECTLY ABOVE LOWER WALL STUDS, THE STUDS SHALL BE ATTACHED TO A COMMON MEMBER IN THE FLOOR ASSEMBLY BY UPLIFT CONNECTIONS.

**WALL ASSEMBLY TO FOUNDATION:**  
 FIRST FLOOR WALL STUDS SHALL BE CONNECTED TO THE FOUNDATION SILL, PLATE, OR BOTTOM PLATE. A MINIMUM OF A 1-1/4" x 20 GA. ASTM A653 GRADE 33 STEEL STRAP SHALL BE NAILED TO THE WALL STUDS AND HAVE A MINIMUM EMBEDMENT OF 7 INCHES IN CONCRETE FOUNDATIONS AND SLABS-ON-GRADE, 15 INCHES IN MASONRY BLOCK FOUNDATIONS, OR BE LAPPED UNDER THE BOTTOM PLATE. 3 INCH SQUARE WASHERS SHALL BE USED ON THE ANCHOR BOLTS AND ANCHOR BOLT SPACINGS SHALL NOT EXCEED THE REQUIREMENTS. STEEL STRAPS EMBEDDED IN OR IN CONTACT WITH SLAB-ON-GRADE OR MASONRY BLOCK FOUNDATIONS SHALL BE HOT-DIPPED GALV. AFTER FABRICATION, OR MANUF. FROM G185 OR Z450 GALV. STL.

**TABLE S107.1 - ROOF SHEATHING OR CLADDING REQUIREMENT - WIND LOAD EXP "C"**

SHEATHING LOCATION	RAFTER / TRUSS SPACING	E		F	
		MAX NAIL SPACING FOR 8d COMMON NAILS (INCHES OC)		MAX NAIL SPACING FOR 8d COMMON NAILS (INCHES OC)	
INTERIOR ZONE	12" OC	6	12		
	16" OC	6	12		
	24" OC	6	6		
PERIMETER EDGE ZONE	12" OC	6	6		
	16" OC	4	4		
	24" OC	3	3		

130 MPH WIND - EXPOSURE "C" TYPICAL.  
 E = NAIL SPACING AT PANEL EDGES, INCHES.  
 F = NAIL SPACING AT INTERMEDIATE SUPPORTS IN THE PANEL FIELD, INCHES.



**TYPICAL CONNECTION DETAILS**

SCALE: NTS

**ROOF UNDERLAYMENT NOTES**

1. FOR ROOF SLOPES FROM TWO UNITS VERTICAL IN 12 UNITS HORIZONTAL (17-PERCENT SLOPE), UP TO FOUR UNITS VERTICAL IN 12 UNITS HORIZONTAL (33-PERCENT SLOPE), UNDERLAYMENT SHALL BE TWO LAYERS APPLIED IN THE FOLLOWING MANNER:  
 a. APPLY A 14 INCH STRIP OF UNDERLAYMENT FELT PARALLEL WITH AND STARTING AT THE EAVES, FASTENED SUFFICIENTLY TO HOLD IN PLACE.  
 b. STARTING AT THE EAVE, APPLY 36 INCH WIDE SHEETS OF UNDERLAYMENT, OVERLAPPING SUCCESSIVE SHEETS 14 INCHES, AND FASTENED SUFFICIENTLY TO HOLD IN PLACE.  
 2. FOR ROOF SLOPES OF FOUR UNITS VERTICAL IN 12 UNITS HORIZONTAL (33-PERCENT SLOPE) OR GREATER, UNDERLAYMENT SHALL BE ONE LAYER APPLIED IN THE FOLLOWING MANNER:  
 a. UNDERLAYMENT SHALL BE APPLIED SINGLE FASHION, PARALLEL TO AND STARTING FROM THE EAVE AND LAPPED 2 INCHES, FASTENED SUFFICIENTLY TO HOLD IN PLACE. END LAPS SHALL BE OFFSET BY 6 FEET.

**ROOF APPLICATION & FASTENING NOTES**

1. INSTALL ROOF PER MANUFACTURERS RECOMMENDATIONS FOR 130MPH WIND SPEED.

**GENERAL UPLIFT CONNECTION NOTES**

**ROOF ASSEMBLY TO WALL ASSEMBLY:**  
 UPLIFT CONNECTIONS SHALL BE FROM RAFTER OR TRUSS TO WALL STUD. WHEN RAFTERS OR TRUSSES ARE NOT LOCATED DIRECTLY ABOVE STUDS, RAFTERS SHALL BE ATTACHED TO THE WALL PLATE AND THE WALL TOP PLATE SHALL BE ATTACHED TO THE WALL STUD WITH UPLIFT CONNECTIONS.

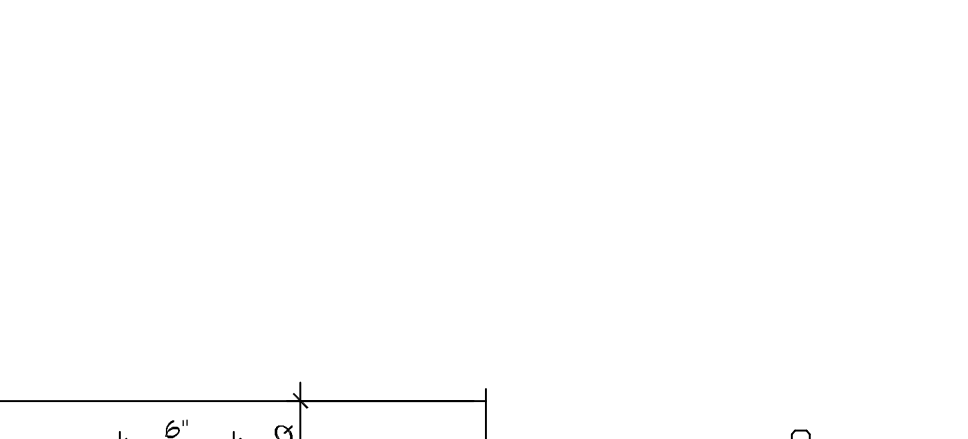
**WALL ASSEMBLY TO WALL ASSEMBLY:**  
 STORY TO STORY UPLIFT CONNECTIONS FROM UPPER STORY WALL STUD TO LOWER STORY WALL STUD. WHEN UPPER STORY WALL STUDS ARE NOT LOCATED DIRECTLY ABOVE LOWER WALL STUDS, THE STUDS SHALL BE ATTACHED TO A COMMON MEMBER IN THE FLOOR ASSEMBLY BY UPLIFT CONNECTIONS.

**WALL ASSEMBLY TO FOUNDATION:**  
 FIRST FLOOR WALL STUDS SHALL BE CONNECTED TO THE FOUNDATION SILL, PLATE, OR BOTTOM PLATE. A MINIMUM OF A 1-1/4" x 20 GA. ASTM A653 GRADE 33 STEEL STRAP SHALL BE NAILED TO THE WALL STUDS AND HAVE A MINIMUM EMBEDMENT OF 7 INCHES IN CONCRETE FOUNDATIONS AND SLABS-ON-GRADE, 15 INCHES IN MASONRY BLOCK FOUNDATIONS, OR BE LAPPED UNDER THE BOTTOM PLATE. 3 INCH SQUARE WASHERS SHALL BE USED ON THE ANCHOR BOLTS AND ANCHOR BOLT SPACINGS SHALL NOT EXCEED THE REQUIREMENTS. STEEL STRAPS EMBEDDED IN OR IN CONTACT WITH SLAB-ON-GRADE OR MASONRY BLOCK FOUNDATIONS SHALL BE HOT-DIPPED GALV. AFTER FABRICATION, OR MANUF. FROM G185 OR Z450 GALV. STL.

**TABLE S107.1 - ROOF SHEATHING OR CLADDING REQUIREMENT - WIND LOAD EXP "C"**

SHEATHING LOCATION	RAFTER / TRUSS SPACING	E		F	
		MAX NAIL SPACING FOR 8d COMMON NAILS (INCHES OC)		MAX NAIL SPACING FOR 8d COMMON NAILS (INCHES OC)	
INTERIOR ZONE	12" OC	6	12		
	16" OC	6	12		
	24" OC	6	6		
PERIMETER EDGE ZONE	12" OC	6	6		
	16" OC	4	4		
	24" OC	3	3		

130 MPH WIND - EXPOSURE "C" TYPICAL.  
 E = NAIL SPACING AT PANEL EDGES, INCHES.  
 F = NAIL SPACING AT INTERMEDIATE SUPPORTS IN THE PANEL FIELD, INCHES.



**TYPICAL CONNECTION DETAILS**

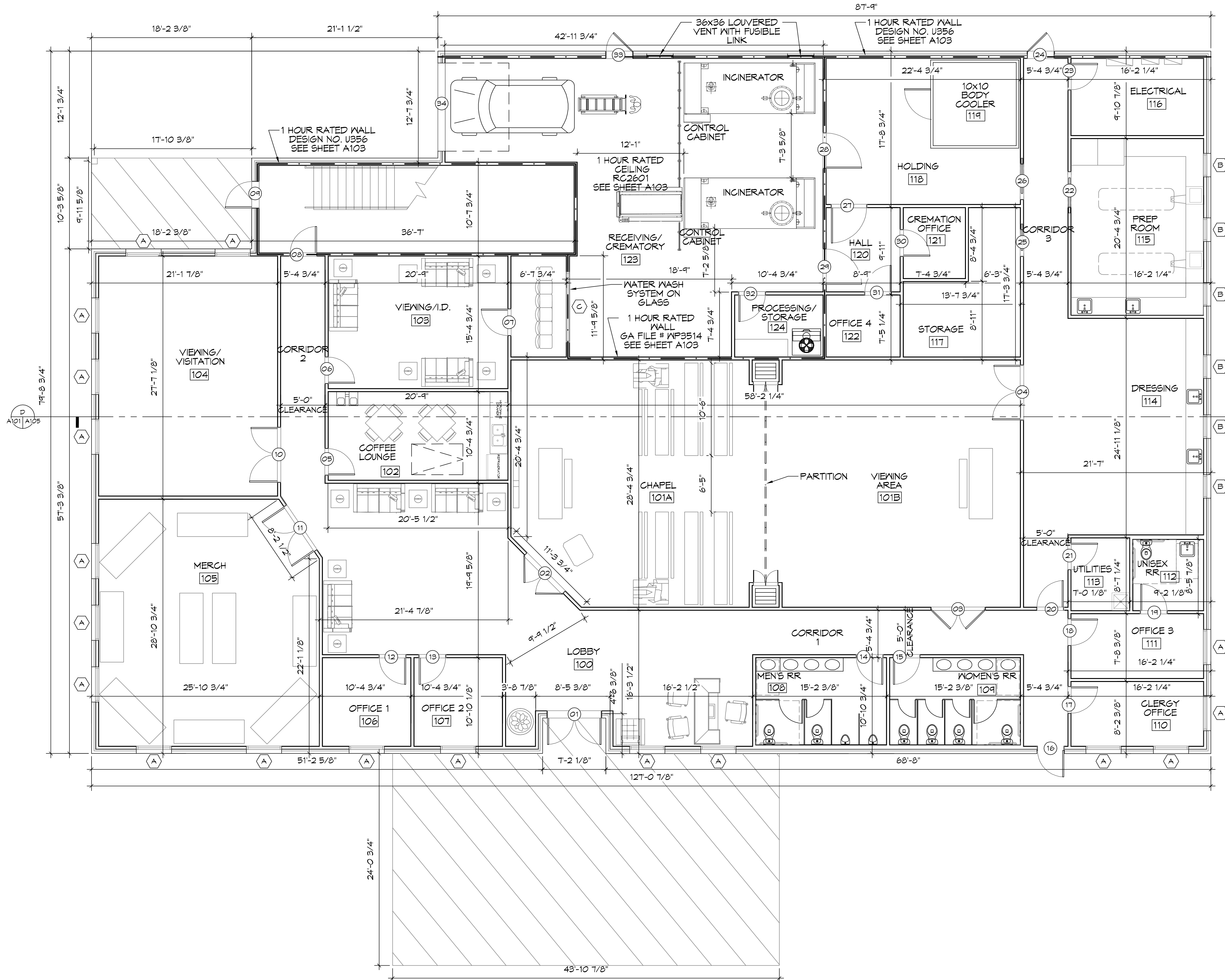
SCALE: NTS

# DAMMON

ENGINEERING, INC.

LOUISIANA & MISSISSIPPI

FILE NAME: J:\Projects\1035 - Boyd Funeral Home\Drawings\1035 - First Floor.dwg PLOT DATE: 8/1/2014 9:58:10 AM



**10 FIRST FLOOR PLAN**  
 SCALE: 3/16"=1'-0"

**DAMMON**  
**ENGINEERING, INC.**  
 LOUISIANA & MISSISSIPPI  
 Chief Engineer: Brian Metch, PE  
 554 Old Spanish Trail  
 Slidell, LA 70458  
 www.dammonengineering.com  
 info@dammonengineering.com  
 PH: 985.649.5832

#	DESCRIPTION	DATE

SEAL: \_\_\_\_\_  
 REVISIONS: \_\_\_\_\_

NEW FUNERAL HOME  
**BOYER FAMILIOME**  
 4800 DOWNMAN ROAD  
 NEW ORLEANS, LA  
 JOB No: 2516 | DATE: 09-05-2014  
 DRAWN BY: JAGKIN | CHECKED BY: CKD

SHEET TITLE:  
**FIRST FLOOR PLAN**

DRAWING NUMBER:  
**A101**













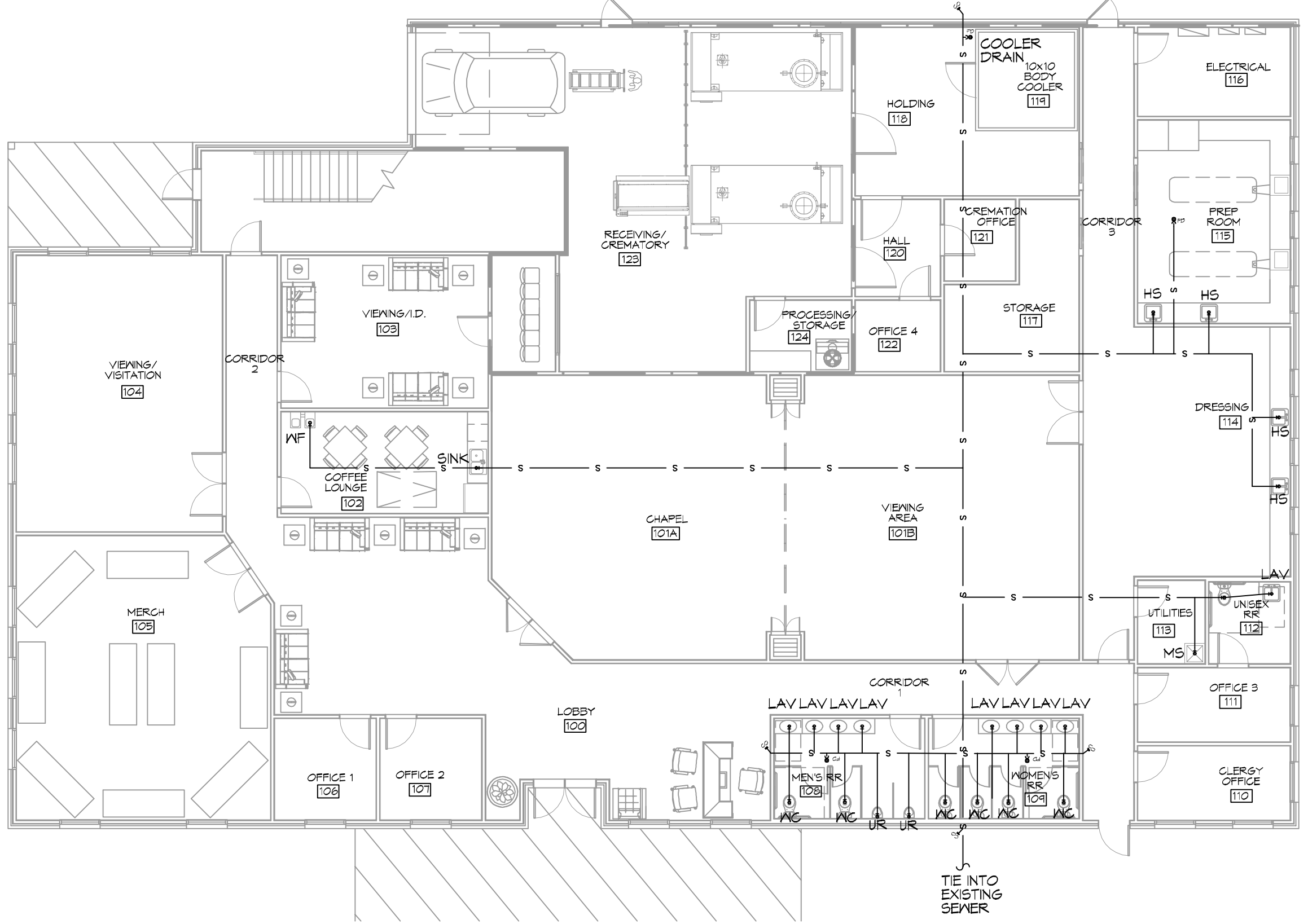
P101.dwg - A:\Projects\2018\2018-09-19\2018-09-19\2018-09-19.dwg - 2018-09-19 10:15:15 AM

LEGEND	
SYMBOL	DESCRIPTION
—S—S—	SANITARY SEWER
—V—V—	VENT PIPE
—D—D—	FLOOR DRAIN
—FCO	LINE CLEAN OUT
—MCO	WALL CLEAN OUT

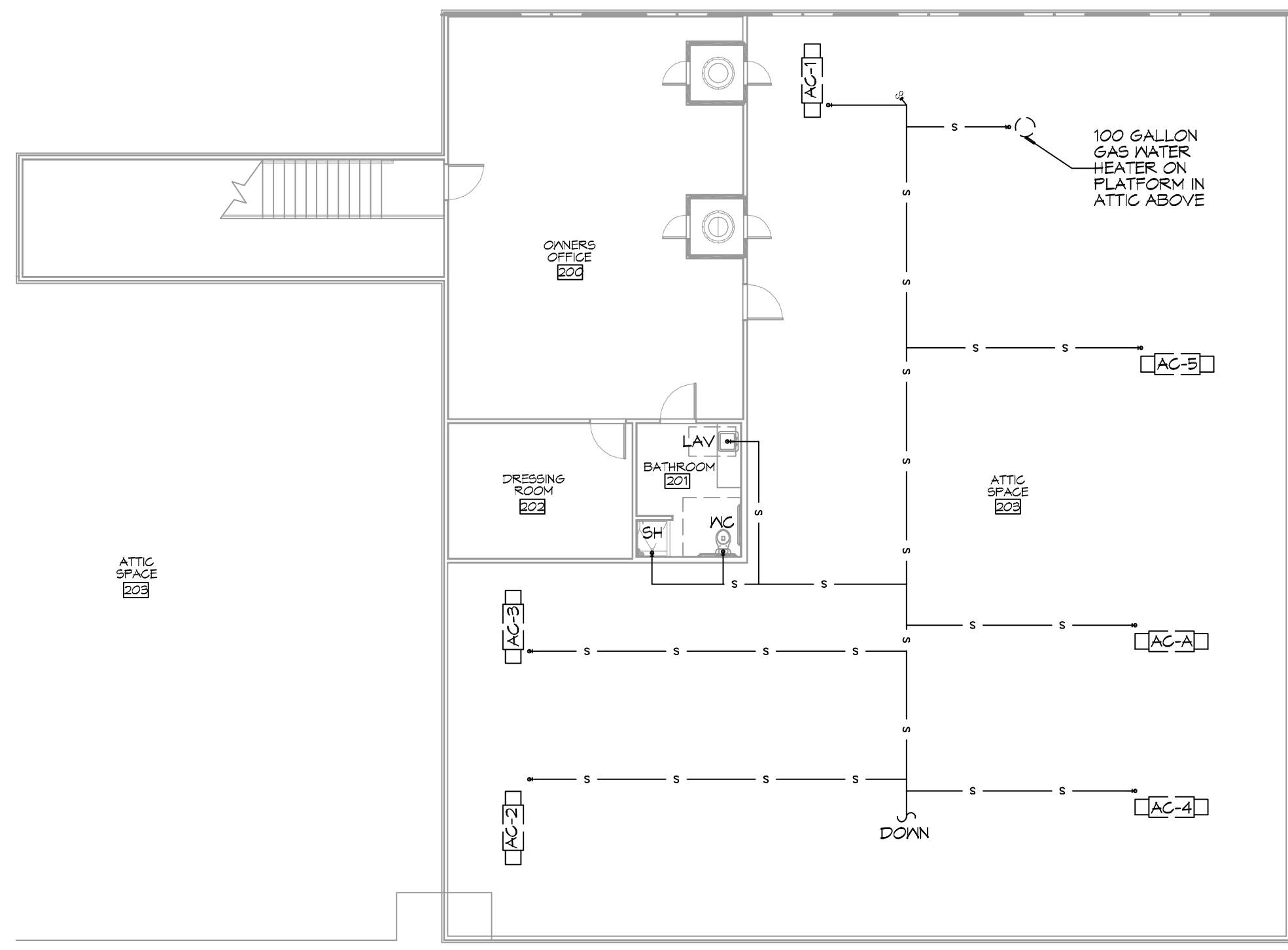
- ### GENERAL PLUMBING NOTES
- SEE VENDOR DRAWINGS.
  - PLUMBING LINES SHOWN ARE DRAWN DIAGRAMMATIC IN NATURE AND REPRESENT CONCEPTUAL ROUTING ONLY. CONTRACTOR IS RESPONSIBLE FOR FIELD VERIFICATION OF ALL ACTUAL CONDITIONS.
  - PROVIDE ALL LABOR, MATERIAL, TRANSPORTATION, SUPERVISION, CLEAN-UP, SERVICES, AND EQUIPMENT FOR A COMPLETE OPERATING SYSTEM. THE SYSTEM SHALL INCLUDE HOT AND COLD WATER PIPING, SEWER AND VENT PIPING, INSULATION, WATER HEATER, HANGERS, VALVES, SUPPORTS WITHOUT ANY RESTRICTIONS TO VOLUME, CUT AND PATCH AS REQUIRED TO INSTALL PIPES.
  - ALL WORK AND MATERIAL SHALL CONFORM STRICTLY TO THE LATEST LOCAL CITY, PARISH, STATE AND NATIONAL GOVERNING CODES. MUST MEET LA STATE PLUMBING CODE 2019 REQUIREMENTS.
  - CONTRACTOR IS TO FIELD VERIFY ALL EXISTING UTILITY LOCATIONS, ELEVATIONS AND SIZES PRIOR TO COMMENCING ANY WORK. CONTRACTOR SHALL PAY NECESSARY FEES FOR THE UTILITIES CONNECTIONS.
  - CONTRACTOR IS RESPONSIBLE TO VERIFY THE EXISTING INVERTS AND SET NEW INVERTS OF SEWERAGE AND DRAINAGE PIPES.
  - SEWERAGE LINES 3-INCH AND SMALLER SHALL BE SLOPED 1/4" PER FOOT AND LINES 4-INCH AND LARGER SHALL BE 1/8" PER FOOT.
  - TEST ALL PIPING AT REQUIRED PRESSURE.
  - ALL PLUMBING SHALL BE CLOSELY COORDINATED WITH STRUCTURAL, MECHANICAL SYSTEM AND ELECTRICAL SYSTEMS TO INSURE NO TRADES WILL CONFLICT WITH EACH OTHER.
  - DO NOT SCALE DRAWINGS. SEE ARCHITECTURAL DRAWINGS FOR EXACT LOCATIONS OF DOORS, WINDOWS, WALLS, FIXTURES, ETC.
  - ALL WATER MAINS AND PIPING NOT SHOWN FOR CLARITY, ALL LOCATIONS FIELD VERIFIED.
  - DOMESTIC HOT AND COLD WATER PIPING AND FITTINGS UNDER SLAB SHALL BE ASTM B88 COPPER WATER TUBE, TYPE K, SOFT ANNEALED. NO JOINTS SHALL BE ALLOWED UNDER THE SLAB.
  - DOMESTIC WATER PIPING AND FITTINGS ABOVE THE SLAB SHALL BE ASTM B88 COPPER WATER TUBE, TYPE L, HARD DRAWN WITH COPPER PRESSURE TYPE FITTINGS, ANSI B16.22. THE JOINTS SHALL BE SOLDERED TYPE USING ASTM B32, ALLOY GRADE #5A (45-5) SOLDER.
  - SOIL, WASTE, VENT PIPING AND FITTINGS ABOVE THE SLAB SHALL BE SERVICE WEIGHT CAST IRON PIPE WITH BELL AND SPIGOT ENDS AND ONE PIECE NEOPRENE INSERT TYPE GASKET. USE PVC SCHEDULE 40 OR ABS DYN/ PIPES AND FITTINGS WHERE PERMITTED BY CODE.
  - ALL WATER PIPING AND FITTINGS ABOVE THE FLOOR SHALL BE INSULATED WITH 1/2" THICK FIBERGLASS INSULATION AND JACKET.
  - ALL ELECTRICAL, MECHANICAL AND PLUMBING ELEMENTS PENETRATING FIRE PARTITIONS SHALL BE FIRE CAULKED. (PENETRATIONS THROUGH RATED CONSTRUCTION SHALL BE SEALED WITH A MATERIAL CAPABLE OF PREVENTING THE PASSAGE OF FLAMES AND HOT GASES WHEN TESTED IN ACCORDANCE WITH ASTM-E814.)
  - SEE ROOF PLAN FOR PLUMBING ROOF PENETRATIONS. ROUTE VENT PIPES IN ATTIC AS NECESSARY.
  - ALL VENTS THROUGH ROOF (VTR) SHALL BE LOCATED A MINIMUM OF 10'-0" FROM ANY MECHANICAL OR NATURAL AIR INTAKE.

# DAMMON ENGINEERING, INC.

LOUISIANA & MISSISSIPPI  
 Chief Engineer: Brian Mitchell, PE  
 554 Old Spanish Trail  
 Slidell, LA 70458  
 www.dammonengineering.com  
 info@dammonengineering.com  
 PH: 985.649.2882



**20 PLUMBING PLAN 1ST FLOOR**  
 SCALE: 3/32" = 1'-0"

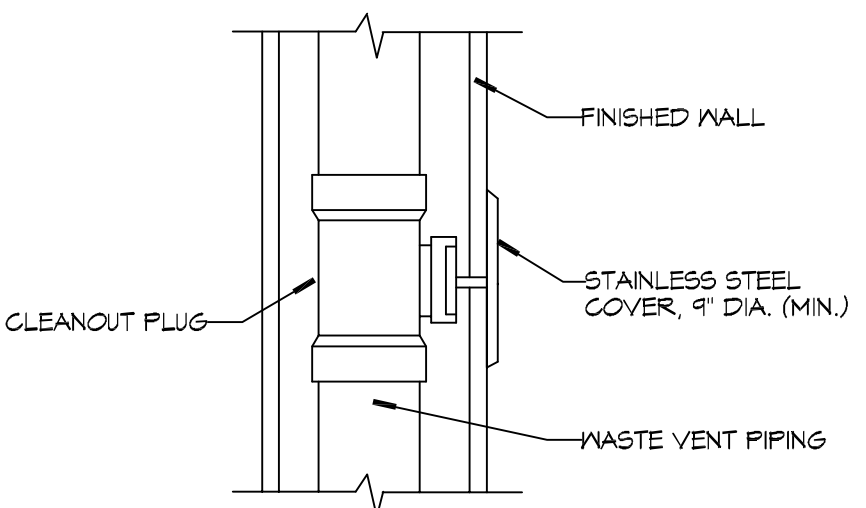


**21 PLUMBING PLAN 2ND FLOOR**  
 SCALE: 3/32" = 1'-0"

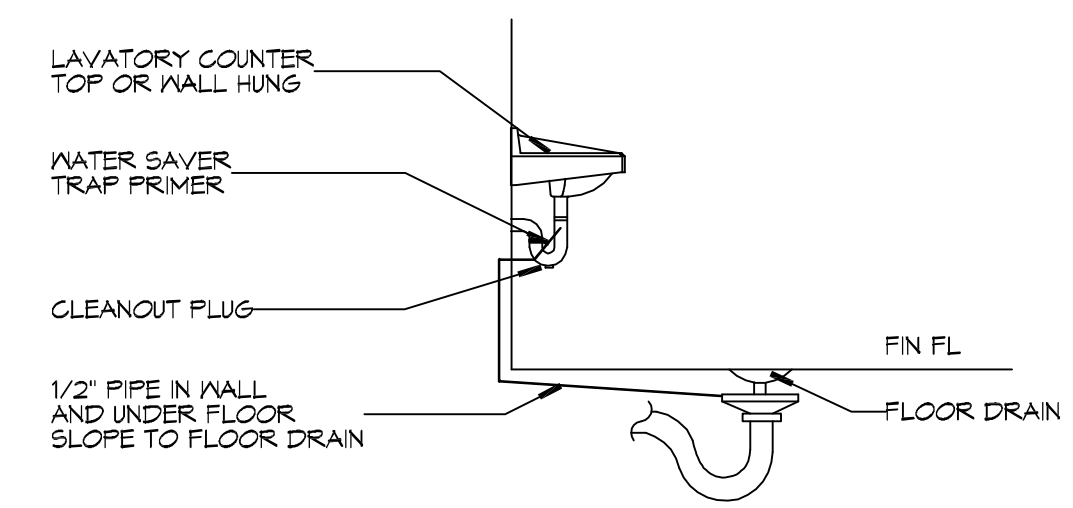
### PLUMBING ABBREVIATIONS

MCO	WALL CLEAN OUT	EW	EMERGENCY EYE WASH STATION
FCO	FLOOR CLEAN OUT	FD	FLOOR DRAIN
CO	CLEAN OUT	UR	URINAL
VTR	VENT THROUGH ROOF	EDF	ELECTRIC DRINKING FOUNTAIN
TD	TROUGH DRAIN	DFF	DOWN TO FIRST FLOOR
WC	WATER CLOSET	RTU	ROOF TOP UNIT
LV	LAVATORY IN COUNTER	TRP	TO ROOF PIT
LVH	LAVATORY IN COUNTER - ACCESSIBLE	DFF	DOWN TO FIRST FLOOR
SINK	SINK DESIGNATION - SEE FIXTURE SCHEDULE	FRP	FROM ROOF PIT
		NF	WATER FOUNTAIN

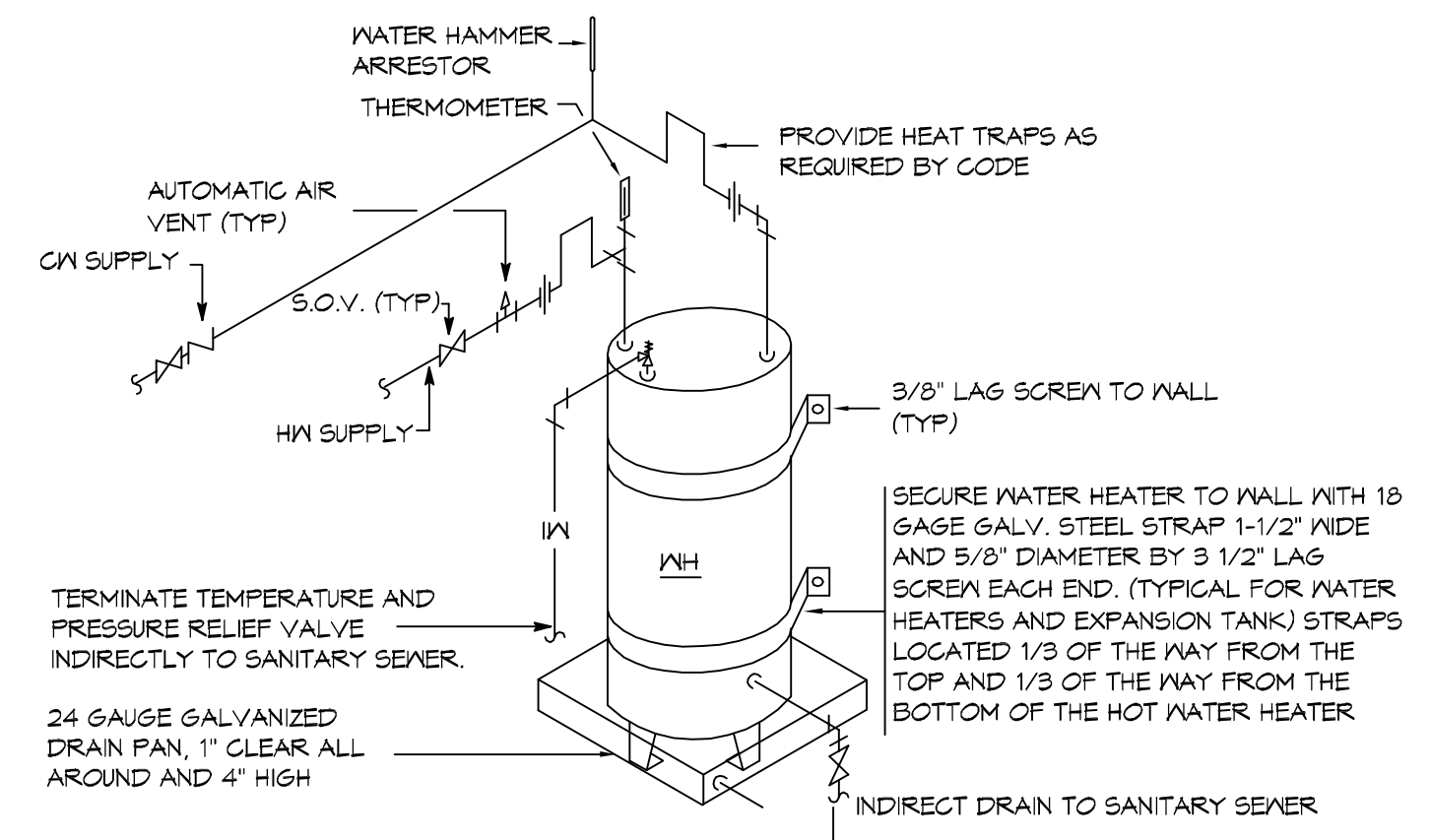
#	DESCRIPTION	DATE



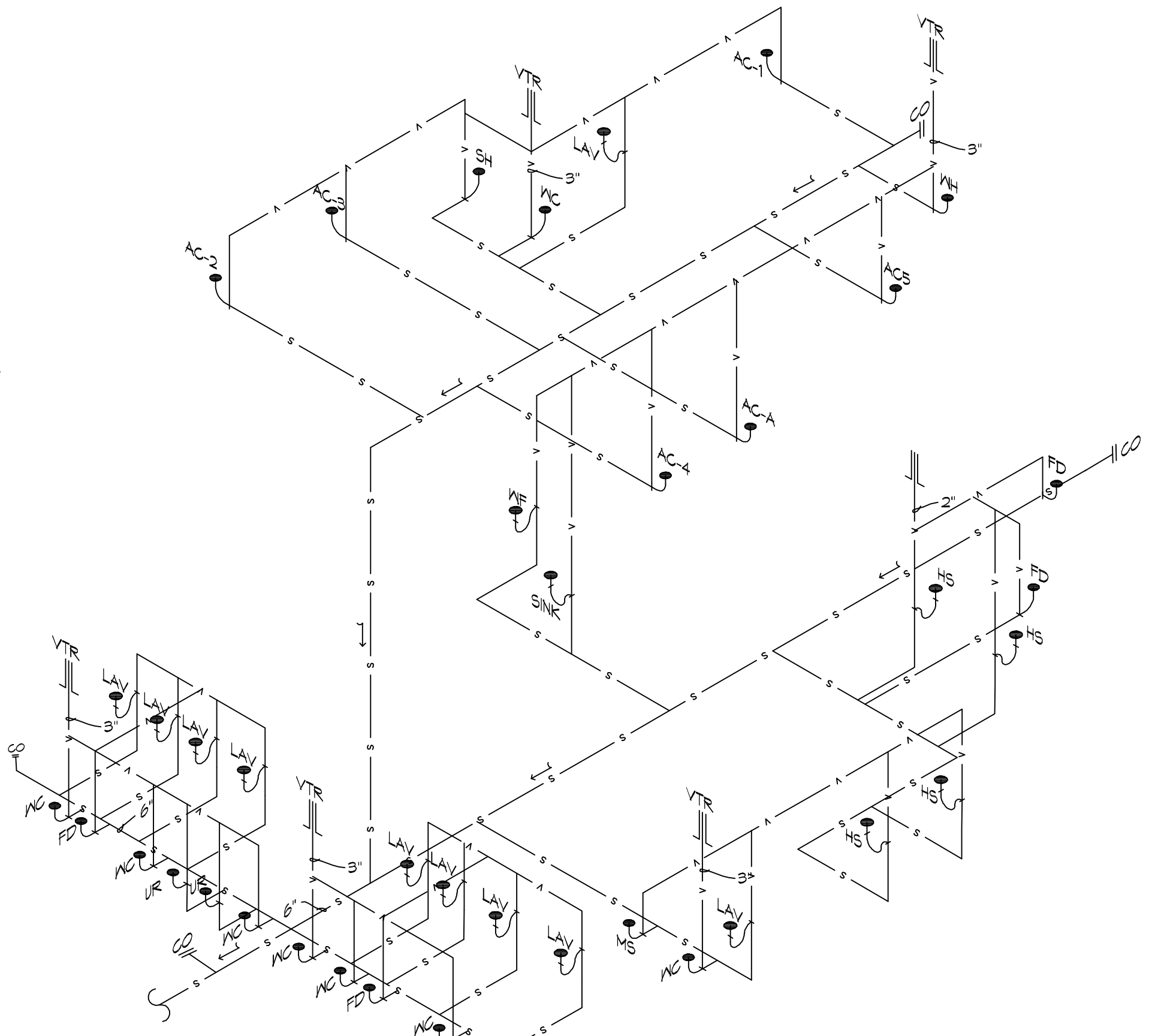
**4 DETAIL**  
 SCALE: N.T.S. WALL CLEAN OUT



**6 DETAIL**  
 SCALE: N.T.S. FLOOR DRAIN



**5 DETAIL**  
 SCALE: N.T.S. WATER HEATER



**22 PLUMBING RISER**  
 SCALE: N.T.S.

NEW FUNERAL HOME  
**BOYD FAMILY FUNERAL HOME**  
 4800 DOWNMAN ROAD  
 NEW ORLEANS, LA  
 JOB No.: 2946 DATE: 09-03-2019  
 DRAWN BY: GSD CHECKED BY: GSD

SHEET TITLE:  
 PLUMBING PLAN AND PLUMBING RISER DIAGRAM  
 DRAWING NUMBER:  
**P101**  
 SHEET No: 15 of # 23



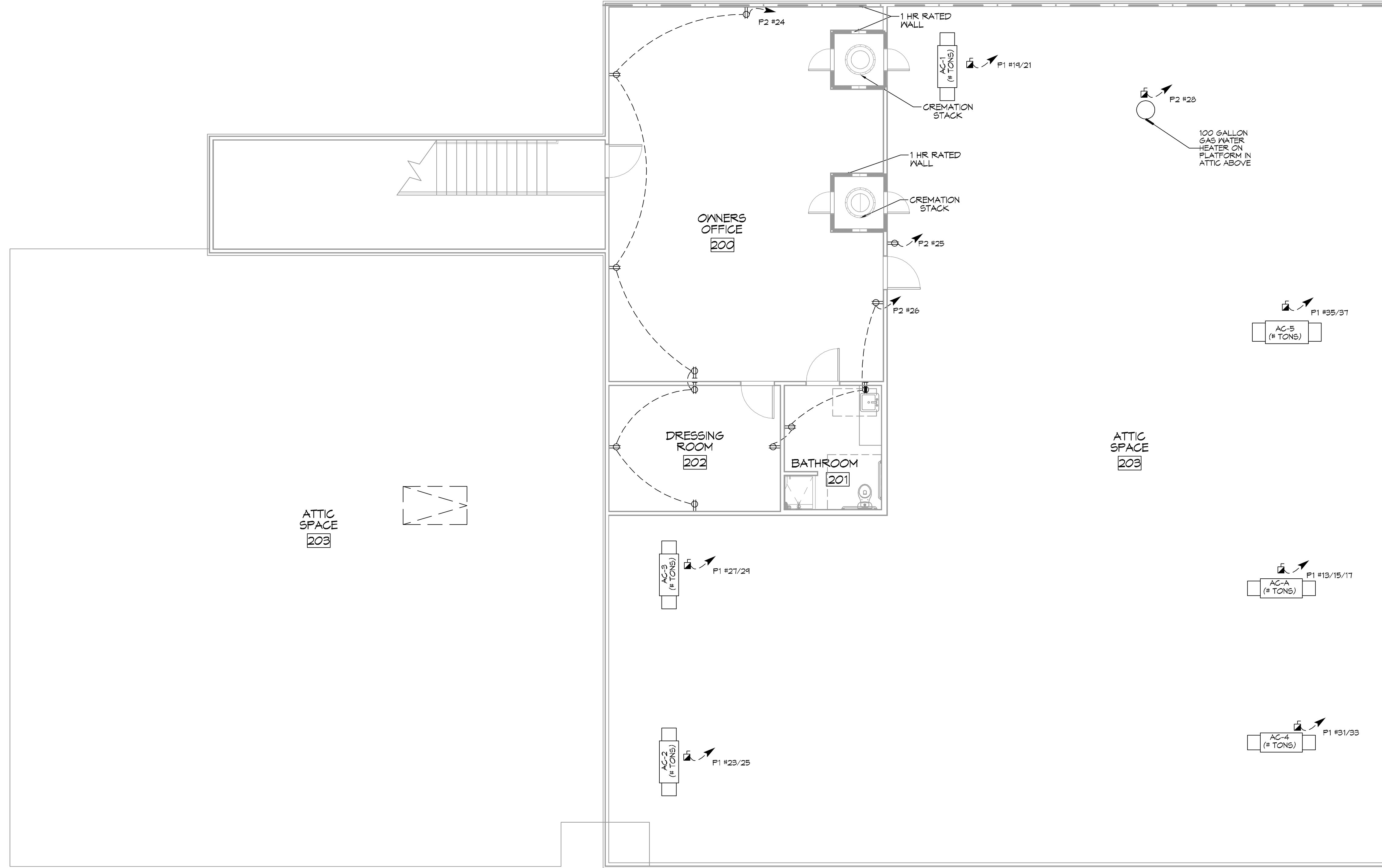








FILE NAME: A:\\_Commercial\2016 - Royal Funeral Home\Drawings\1103 - SECOND FLOOR POWER PLAN.dwg PLOT DATE: 8/26/2016 PLOT TIME: 1:31:16 PM



**28** SECOND FLOOR POWER PLAN  
SCALE: 3/16"=1'-0"

**DAMMON ENGINEERING, INC.**  
LOUISIANA & MISSISSIPPI  
Chief Engineer: Brian Metch, PE  
www.dammonengineering.com  
554 Old Spanish Trail  
Slidell, LA 70458  
PH: 985.649.5832

REVISIONS	DATE
# / DESCRIPTION	



NEW FUNERAL HOME  
**BONER FAMILIOME**  
4800 DOWNMAN ROAD  
NEW ORLEANS, LA  
JOB No: 2516 | DATE: 09-05-2014  
DRAWN BY: JAGKIN | CHECKED BY: CKD

SHEET TITLE:  
SECOND FLOOR POWER PLAN

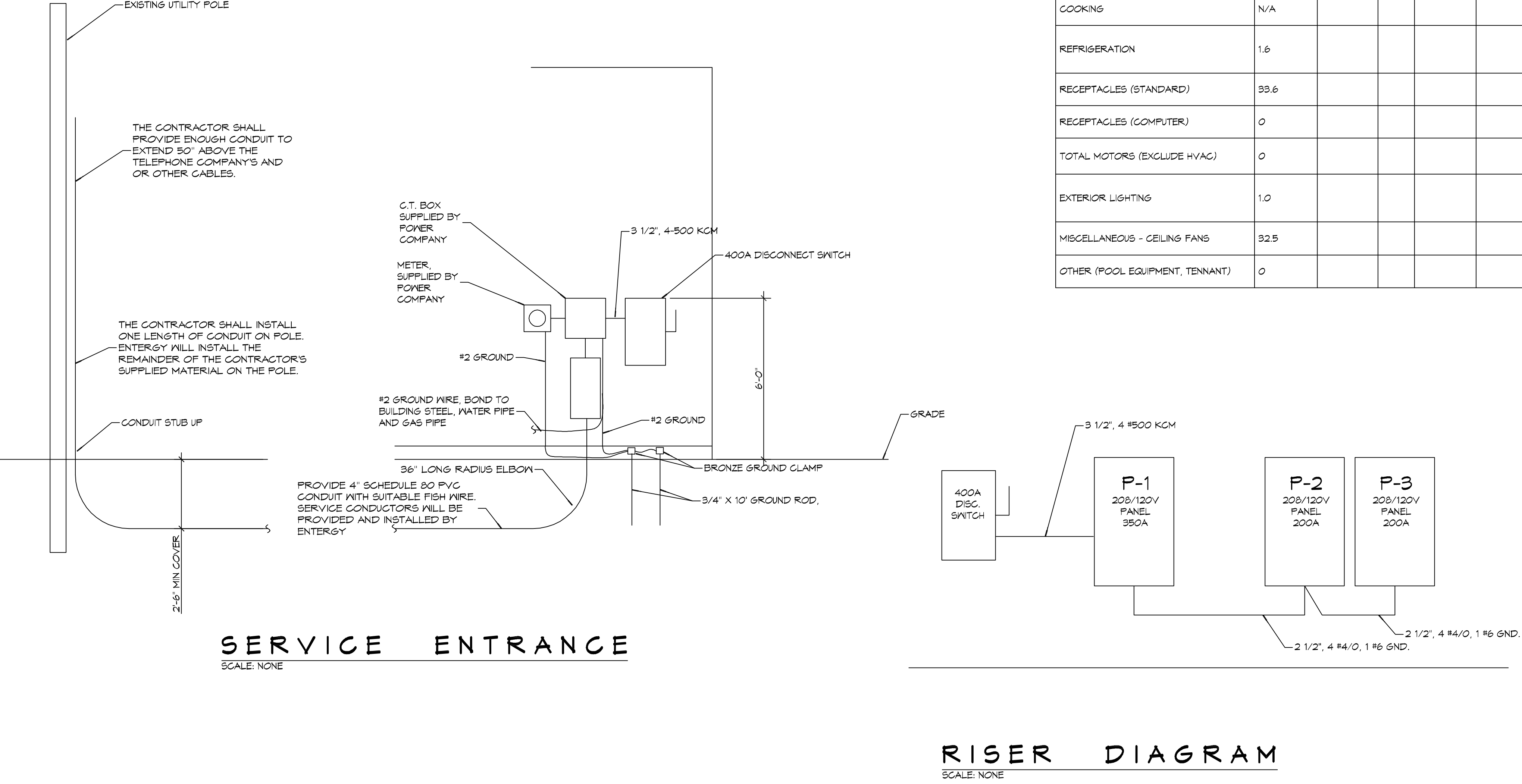
DRAWING NUMBER:  
**E103**



PANEL SCHEDULE											
PANEL: P1			VOLTAGE: 208/120V, 3ØA, 3Ø, 4W N/M/L0			ENCLOSURE: SURFACE MOUNTED W/ EQUIPMENT GND BAR SQUARE D, I-LINE PANELBOARD			AG = 22,000		
LOCATION: ELECTRICAL ROOM			FEEDER SOURCE: UTILITY			AG = 22,000			ENCLOSURE: SURFACE MOUNTED W/ EQUIPMENT GND BAR SQUARE D, I-LINE PANELBOARD		
CKT NO	THHN WIRE SIZE	LOAD DESCRIPTION	BREAKER	LOAD (VA)	LOAD (VA)	BREAKER	LOAD DESCRIPTION	THHN WIRE SIZE	CKT NO	THHN WIRE SIZE	LOAD DESCRIPTION
		LOCATION	AMP POLE			POLE AMP	LOCATION				
1				15070	4800				2		
3	250KCM	PANELS "P2" AND "P3"	200 3	17850	4800	3 50	CREMATOR NO. 1	#6	4		
5				15020	4800				6		
1				950	4800				8		
4	#12	BODY COOLER	15 3	950	4800	3 50	CREMATOR NO. 2	#6	10		
11				950	4800				12		
13				2500	1300				14		
15	#6	HVAC A	40 3	2500	1300	3 30	CONDENSER UNIT A	#6	16		
17				2500	1300				18		
14	#10	HVAC NO. 1	30 2	1800			SPACE		20		
21				1800					22		
23	#6	HVAC NO. 2	50 2	2400			SPACE		24		
25				2400					26		
27	#10	HVAC NO. 3	30 2	1800	820		CONDENSER UNIT NO. 2	#6	28		
24				1800	820				30		
31	#6	HVAC NO. 4	60 2	3600	460		CONDENSER UNIT NO. 3	#12	32		
33				3600	460				34		
35	#6	HVAC NO. 5	40 2	2400	820		CONDENSER UNIT NO. 4	#6	36		
37				2400	820				38		
34	#12	CONDENSER UNIT NO. 1	20 2	460	620		CONDENSER UNIT NO. 5	#10	40		
41				460	620				42		
SOLID NEUTRAL NEUTRAL WIRE (N)				TOTAL CONNECTED LOAD (VA) = 125,150				GROUND BUS GROUND WIRE (G)			
				AG = 44,500	BO = 41,360	CO = 39,290					

PANEL SCHEDULE											
PANEL: P2			VOLTAGE: 208/120V, 200A, 3Ø, 4W N/M/L0			ENCLOSURE: SURFACE MOUNTED W/ EQUIPMENT GND BAR SQ D TYPE GO LOAD CENTER			AG = 22,000		
LOCATION: ELECTRICAL ROOM			FEEDER SOURCE: PANEL P-1			AG = 22,000			ENCLOSURE: SURFACE MOUNTED W/ EQUIPMENT GND BAR SQ D TYPE GO LOAD CENTER		
CKT NO	THHN WIRE SIZE	LOAD DESCRIPTION	BREAKER	LOAD (VA)	LOAD (VA)	BREAKER	LOAD DESCRIPTION	THHN WIRE SIZE	CKT NO	THHN WIRE SIZE	LOAD DESCRIPTION
		LOCATION	AMP POLE			POLE AMP	LOCATION				
1	#12	RECEPTACLES, EXTERIOR	20 1	900	1050	1 20	RECEPTACLES, DRESSING ROOM, UTILITIES, OFFICE	#12	2		
3	#12	RECEPTACLES, EQUIPMENT AND PREP ROOMS	20 1	1440	1200	1 20	RECEPTACLE, UNSEX REST ROOM	#12	4		
5	#12	DEDICATED RECEPTACLE, PREP ROOM	20 1	1200	1050	1 20	RECEPTACLES, OFFICES	#12	6		
7	#12	DEDICATED RECEPTACLE, PREP ROOM	20 1	1200	1200	1 20	RECEPTACLE, WOMENS REST ROOM	#12	8		
4	#12	DEDICATED RECEPTACLE, DRESSING ROOM	20 1	1200	1200	1 20	RECEPTACLE, MENS REST ROOM	#12	10		
11	#12	DEDICATED RECEPTACLE, DRESSING ROOM	20 1	1200	1200	1 20	RECEPTACLES, CHAPEL AND VEINING AREA	#12	12		
13	#12	RECEPTACLES, HOLDING AND CREMATION OFFICE	20 1	1050	1050	1 20	RECEPTACLES, OFFICE 2 AND LOBBY	#12	14		
15	#12	RECEPTACLES, PROCESSING AREA, OFFICE AND STORAGE	20 1	900	1050	1 20	RECEPTACLES, OFFICE 1 AND OFFICE 2	#12	16		
17	#12	RECEPTACLES, MERCH ROOM	20 1	1050	900	1 20	RECEPTACLES, COFFEE LOUNGE	#12	18		
14	#12	RECEPTACLES, VISITATION AND VEINING ROOM	20 1	1050	1500	1 20	DEDICATED RECEPTACLE, COFFEE LOUNGE	#12	20		
21	#12	RECEPTACLES, VEINING AND 2 <sup>ND</sup> ROOM	20 1	1050	1500	1 20	DEDICATED RECEPTACLE, COFFEE LOUNGE	#12	22		
23	#12	RECEPTACLES, RECEIVING/ CREMATORY	20 1	900	1260	1 20	RECEPTACLES, OWNER'S OFFICE SECOND FLOOR	#12	24		
25	#12	RECEPTACLES, ATTIC	20 1	1260	720	1 20	RECEPTACLES, BATHROOM SECOND FLOOR	#12	26		
27	#12	CONTROL POWER TO CREMATOR NO. 1	15 1	500	300	1 15	WATER HEATER	#12	28		
24	#12	CONTROL POWER TO CREMATOR NO. 2	15 1	500					30		
31	#12	BODY COOLER, EVAPORATOR AND LIGHTS	20 1	500					32		
33	#10	3ØA RECEPTACLE FOR PROCESSING STATION	30 1	2500					34		
35	#12	CONTROL POWER TO KEY SWITCH CREMATOR VEINING ROOM	15 1	500					36		
37									38		
34									40		
41									42		
SOLID NEUTRAL NEUTRAL WIRE (N)				TOTAL CONNECTED LOAD (VA) = 33,840				GROUND BUS GROUND WIRE (G)			
				AG = 11,420	BO = 12,600	CO = 9,820					

PANEL SCHEDULE											
PANEL: P3			VOLTAGE: 208/120V, 200A, 3Ø, 4W N/M/L0			ENCLOSURE: SURFACE MOUNTED W/ EQUIPMENT GND BAR SQ D TYPE GO LOAD CENTER			AG = 22,000		
LOCATION: ELECTRICAL ROOM			FEEDER SOURCE: PANEL P1			AG = 22,000			ENCLOSURE: SURFACE MOUNTED W/ EQUIPMENT GND BAR SQ D TYPE GO LOAD CENTER		
CKT NO	THHN WIRE SIZE	LOAD DESCRIPTION	BREAKER	LOAD (VA)	LOAD (VA)	BREAKER	LOAD DESCRIPTION	THHN WIRE SIZE	CKT NO	THHN WIRE SIZE	LOAD DESCRIPTION
		LOCATION	AMP POLE			POLE AMP	LOCATION				
1	#12	LIGHTS, DRESSING ROOM AND CORRIDOR	20 1	1000	1500	1 20	LIGHTS, RESTROOMS	#12	2		
3	#12	LIGHTS, ELECTRICAL ROOM UNSEX RESTROOM AND OFFICES	20 1	1100	400	1 20	SPARE	#12	4		
5	#12	LIGHTS, CORRIDOR	20 1	800	1000	1 20	LIGHTS, LOBBY	#12	6		
7	#12	LIGHTS, VEINING ROOM A	20 1	1100	1300	1 20	LIGHTS, VEINING VISITATION ROOM	#12	8		
4	#12	LIGHTS, VEINING ROOM B	20 1	1100	900	1 20	LIGHTS, MERCH ROOM AND OFFICES	#12	10		
11	#12	LIGHTS, VEINING ID ROOM AND COFFEE LOUNGE	20 1	1600	900	1 20	LIGHTS, FRONT PORCH	#12	12		
13	#12	LIGHTS, SECOND FLOOR	20 1	1200	400	1 20	LIGHTS, ATTIC	#12	14		
15	#12	LIGHTS, HOLDING, OFFICES, STORAGE ROOM	20 1	1000	300	1 20	LIGHTS, REAR PORCH AND STAIRS	#12	16		
17	#12	LIGHTS, RECEIVING, CREMATORY	20 1	600					18		
14	#12	OUTSIDE LIGHTS, REAR THROUGH LIGHTING CONTACTOR	20 1	150					20		
21	#10	PARKING LOT LIGHTS THROUGH LIGHTING CONTACTOR	20 2	450					22		
23				450					24		
25									26		
27									28		
24									30		
31									32		
33									34		
35									36		
37									38		
34									40		
41									42		
SOLID NEUTRAL NEUTRAL WIRE (N)				TOTAL CONNECTED LOAD (VA) = 11,100				GROUND BUS GROUND WIRE (G)			
				AG = 6,650	BO = 5,250	CO = 5,200					



**ELECTRICAL LOAD SUMMARY**

ENTERGY POWER COMPANY					
PROJECT NAME:	BOYD FAMILY FUNERAL HOME				
PROJECT ADDRESS:	4800 DOWNMAN ROAD				
CITY/TOWN:	NEW ORLEANS, LOUISIANA				
INTENDED USER:	BOYD				
REQ SERV:	208 V	3	PHASE	4 WIRES	
SERV ENTR SIZE:	350 AMPS				
HVAC TONNAGE:	26 TONS				
LARGEST MOTOR:	HP				
(NOTE: MOTORS ABOVE 20HP MAY REQUIRE REDUCED VOLTAGE STARTING AND ARE NEVER RECOMMENDED FOR USE W/ 120/240V, 1Ø, 3Ø SERVICE)					
TOTAL BUILDING SQ FT:	11000	SF			
INDIVIDUAL UNIT SQUARE FOOTAGE:	SF (MULT OCCUPANCY)				
INDIVIDUAL UNIT DESIGNATION:	(MULT OCCUPANCY)				
LOAD SOURCE	1Ø-KVA	3Ø-KVA	OR	1Ø-KVA	3Ø-KVA
BUILDING LIGHTING	17.1				
ELECTRIC WATER HEATING	0.0				
HEAT PUMPS		4.0			
SUPPLEMENTAL HEAT SYSTEMS		7.5			
AIR COND CONDENSING UNITS	6.3				
ELEC HEATING (PRIMARY) - AHU'S	26				
COOKING	N/A				
REFRIGERATION	1.6				
RECEPTACLES (STANDARD)	33.6				
RECEPTACLES (COMPUTER)	0				
TOTAL MOTORS (EXCLUDE HVAC)	0				
EXTERIOR LIGHTING	1.0				
MISCELLANEOUS - CEILING FANS	32.5				
OTHER (POOL EQUIPMENT, TENNANT)	0				

**DAMMON ENGINEERING, INC.**  
LOUISIANA & MISSISSIPPI

Chief Engineer: Brian Mistich, PE  
554 Old Spanish Trail  
Slidell, LA 70468  
www.dammonengineering.com  
info@dammonengineering.com  
PH: 985-649-5832

DATE: \_\_\_\_\_

DESCRIPTION: \_\_\_\_\_

REVISIONS:

# DESCRIPTION

STATE OF LOUISIANA  
BRIAN A. MISTICH  
LICENSE NO. 30137

NEA FUNERAL HOME

BOYD FAMILY FUNERAL HOME

4800 DOWNMAN ROAD  
NEW ORLEANS, LA

JOB NO: \_\_\_\_\_ DATE: 08-09-2016 2:36 PM  
DRAWN BY: AP/JAG/MK CHECKED BY: \_\_\_\_\_

SHEET TITLE: ELECTRICAL PANEL SCHEDULES

DRAWING NUMBER: \_\_\_\_\_

**E105**

SHEET No: 23 of 23