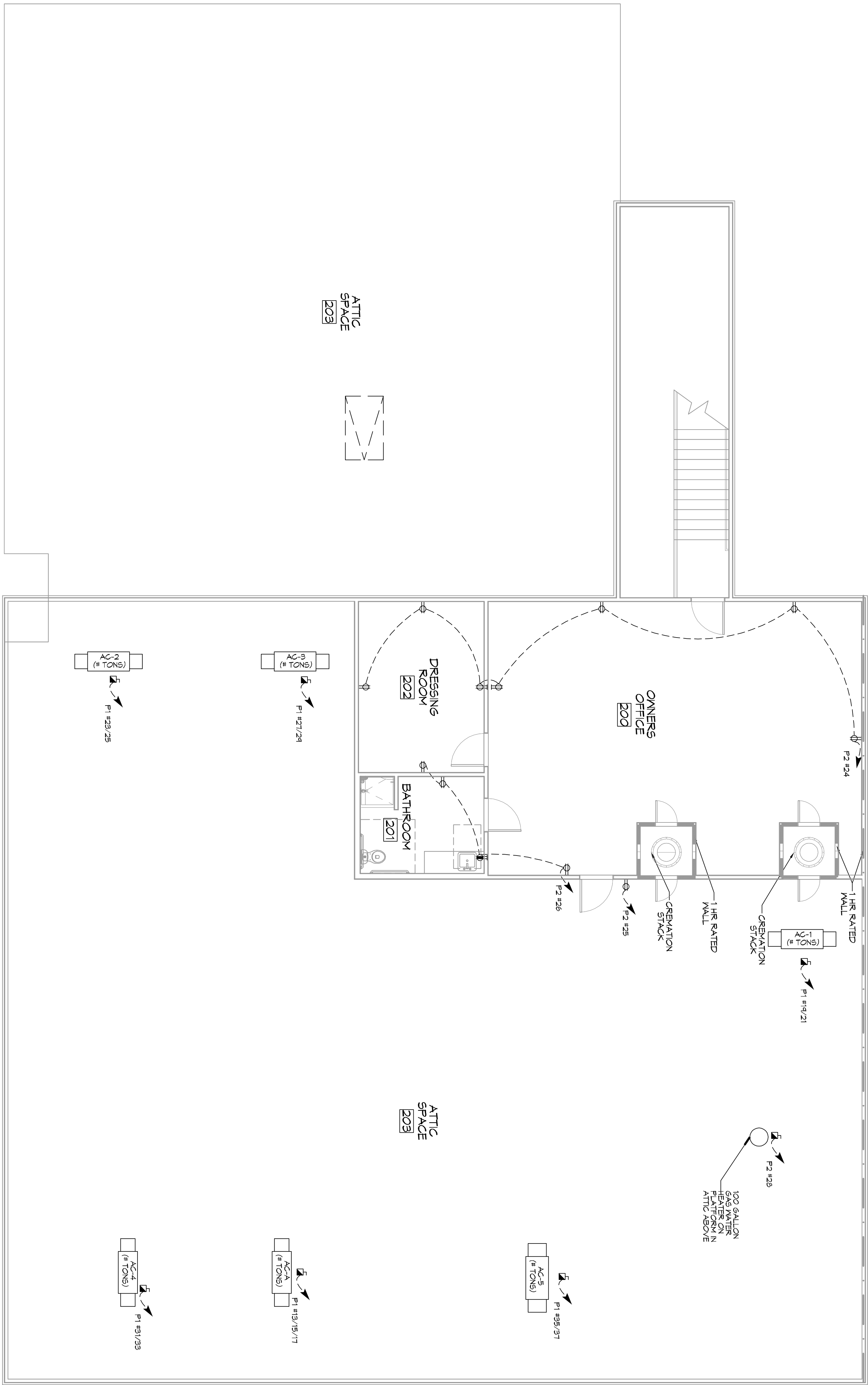


28 SECOND FLOOR POWER PLAN
SCALE: 3/16"=1'-0"



SHEET NO: **E103**
21 of 22

DRAWING NUMBER:
SECOND FLOOR POWER PLAN

NEW FUNERAL HOME
BOYD FAMILY FUNERAL HOME
4800 DOWNMAN ROAD
NEW ORLEANS, LA

JOB No: 2396 DATE: 04-03-2019
DRAWN BY: JAGMM CHECKED BY: CKD

The above drawings and specifications, except where amendments thereto are shown, are the property of Dammon Engineering, Inc. and no part thereof shall be copied, reproduced, or used in connection with any work or project other than that specifically intended for which they have been prepared and developed without written consent of Dammon Engineering, Inc. In all cases, the drawings and specifications shall control over any other documents, drawings, or specifications. If you have any questions, please contact the project manager at Dammon Engineering, Inc. at 985.649.5832.



| REVISIONS | |
|-----------|-------------|
| # | DESCRIPTION |
| | |
| | |
| | |
| | |
| | |
| | |
| | |
| | |
| | |

DAMMON ENGINEERING, INC.
LOUISIANA & MISSISSIPPI

Chief Engineer: Brian Mistich, PE
554 Old Spanish Trail
Slidell, LA 70458

www.dammonengineering.com
info@dammonengineering.com
PH: 985.649.5832