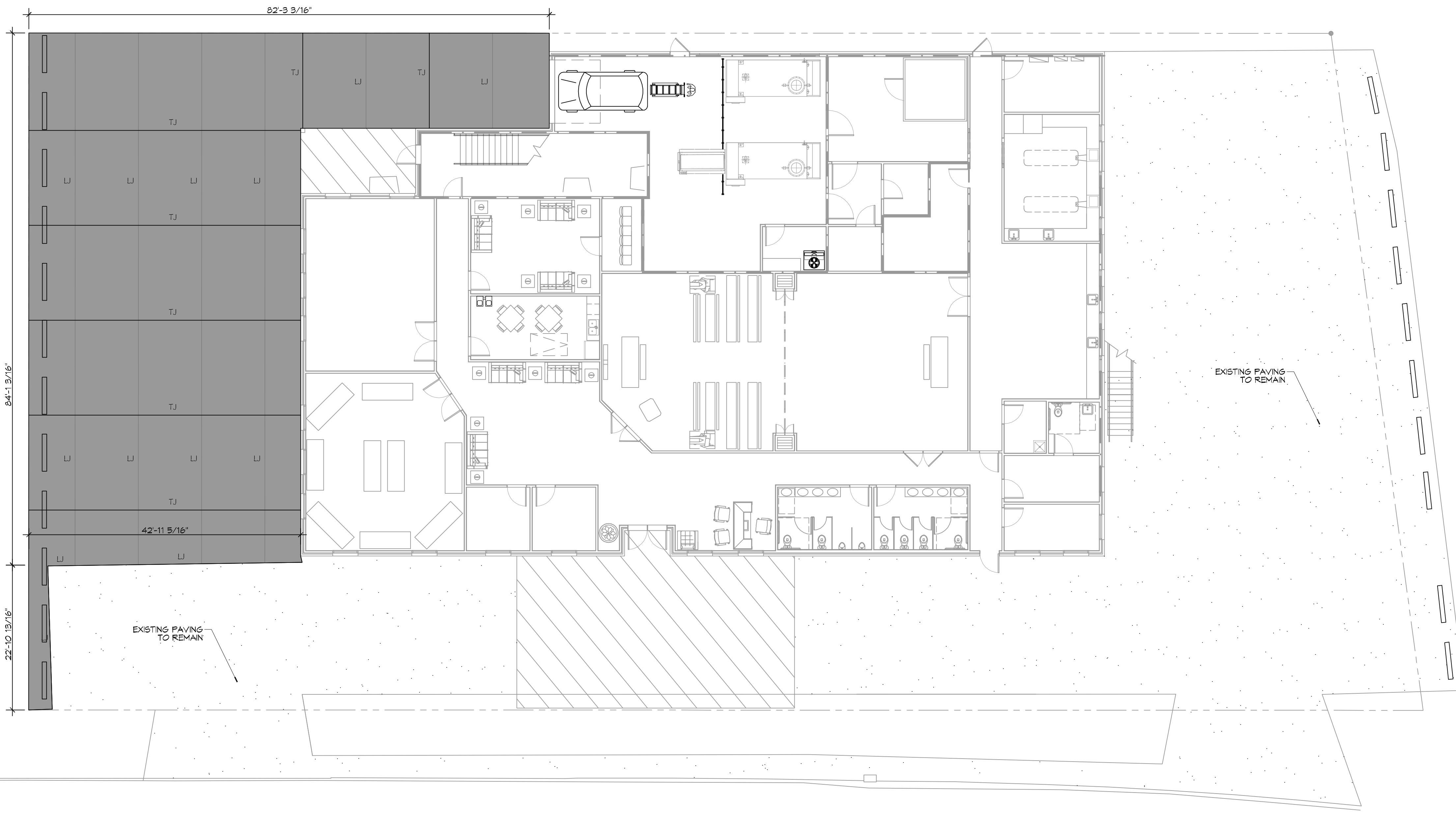


PLOT NAME: A:\Comm\13108 - Boyd Funeral Home\Drawings\13108 - 03 - Paving Plan.dwg Date: Thursday, October 17, 2019 11:14:49 AM



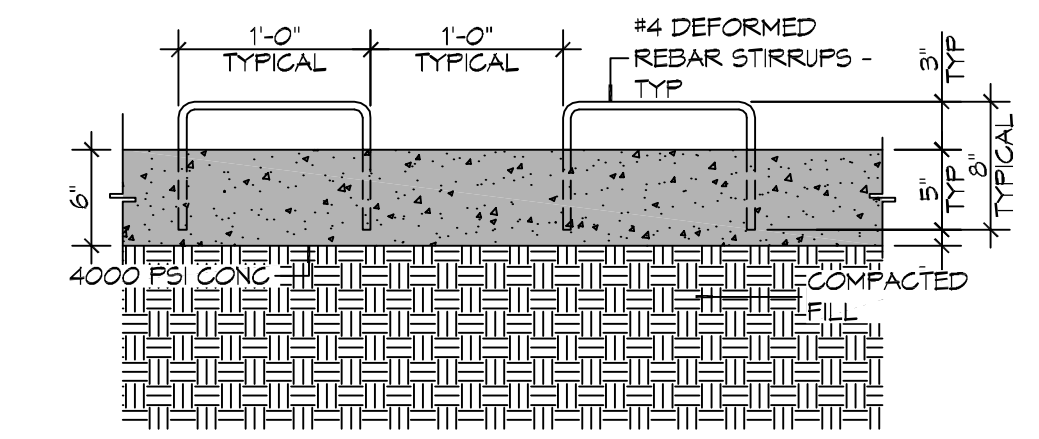
PAVING PLAN
 SCALE: 1" = 10'-0"

GENERAL PAVING NOTES

1. ALL NEW CONCRETE SHALL HAVE A MINIMUM COMPRESSIVE STRENGTH OF 4,000 PSI AT 28 DAYS AND A MINIMUM THICKNESS OF 6". CONCRETE MIX SHALL BE IN ACCORDANCE WITH THE LATEST REVISION OF ASTM C-150 TYPE 1.
2. CONCRETE PAVING THICKNESS SHALL VARY AS FOLLOWS:
 - a. APRONS & LOADING AREAS = 8" THICKNESS (INDICATED WITH CROSS HATCH WHERE OCCURS)
 - b. DRIVE LANES & PARKING AREAS = 6" THICKNESS (STANDARD UNO)
3. ALL REINFORCING STEEL SHALL MEET ASTM-A615 (GRADE 60).
4. ALL REINFORCING STEEL SHALL BE SECURELY SUPPORTED TO PREVENT BOTH VERTICAL AND HORIZONTAL MOVEMENT DURING CONCRETE PLACEMENT. ALL CONTROL AND EXPANSION JOINTS SHALL BE LOCATED AND INSTALLED AS SHOWN ON THE PAVING PLAN AND IN ACCORDANCE WITH THE MANUFACTURER'S RECOMMENDATIONS.
5. ALL SUB GRADE FILL SHALL BE SELECT GRANULAR MATERIAL COMPACTED TO 95% STANDARD PROCTOR DENSITY IN A MAXIMUM OF 6" LIFTS.
6. ANY WORK WITHIN THE ROADWAY OR ADJACENT TO THE ROADWAY CAUSING AN INTERFERENCE TO VEHICULAR TRAFFIC MUST CONFORM TO THE REQUIREMENTS SET FORTH BY THE UNIFORM MANUAL OF TRAFFIC CONTROL DEVICES OF THE STATE OF LOUISIANA. THE CONTRACTOR MUST FURNISH ALL NECESSARY TRAFFIC SIGNS AND/OR BARRICADES AND MAINTAIN THEM DURING CONSTRUCTION ACTIVITY.

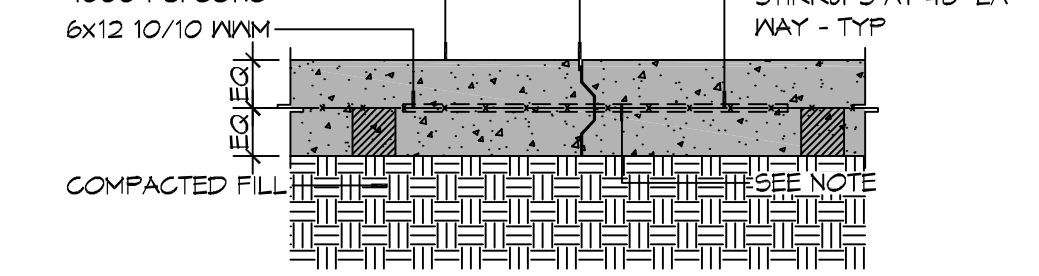
PAVING LEGEND

- LONGITUDINAL JOINTS (LJ) = NO. 5 DEFORMED DOSEL RODS 24" LONG @ 24" O. C.
- TRANSVERSE JOINTS (TJ) = NO. 5 SMOOTH DOSEL RODS 24" LONG @ 24" O. C.
- PARKING WHEEL STOP
- EXISTING TOPO

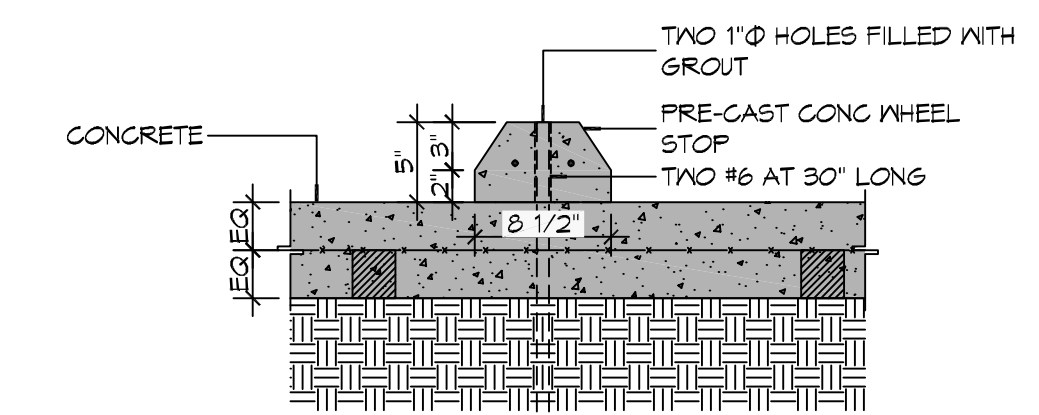


TYPICAL PAVEMENT JOINT

6" MTL KEYWAY JOINT SYSTEM NOTE:
 LONGITUDINAL JOINTS (LJ): NO. 5 DEFORMED DOSEL ROD 24" L @ 24" O. C.
 TRANSVERSE JOINTS (TJ): NO. 5 SMOOTH DOSEL ROD 24" L @ 24" O. C.
 EXP MTL KEYWAY JOINT



TYPICAL WHEEL STOP



DRIVENWAY ROLLOVER CURB

PAVING DETAILS
SCALE: 1" = 1'-0"

DAMMON ENGINEERING, INC.
 LOUISIANA & MISSISSIPPI
 Chief Engineer: Brian Mitchell, PE
 354 Old Spanish Trail
 Slidell, LA 70688
 www.dammonengineering.com
 info@dammonengineering.com
 PH: 855.649.3822

REVISIONS	DATE	DESCRIPTION

SEAL: _____
 # _____

NEW FUNERAL HOME
BOYD FAMILY FUNERAL HOME
 4900 DOWNSMAN ROAD
 NEW ORLEANS, LA
 JOB NO: 13108 DATE: 10-10-2019
 DRAWN BY: CSD CHECKED BY: CSD

SHEET TITLE:
PAVING PLAN
 DRAWING NUMBER:
C102
 SHEET No: 4 of # 23