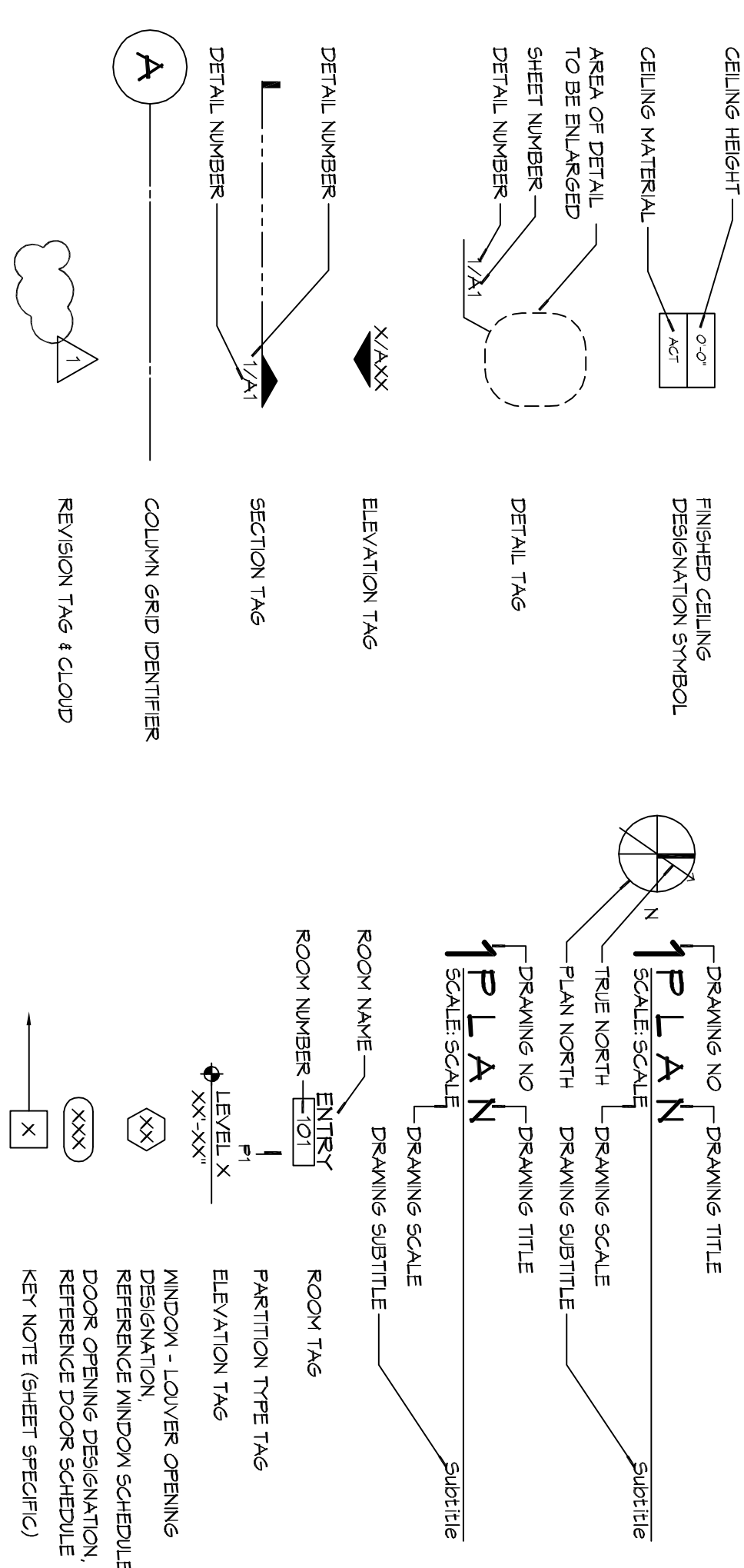


GRAPHIC SYMBOLS



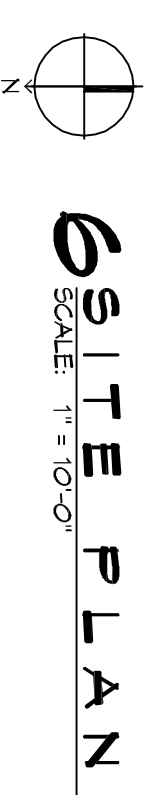
HARD & GREEN SPACE
EXISTING CONCRETE PARKING = 1169.00 SQ. FT.
EXISTING GRASS & LANDSCAPING (PERMEABLE) = 631.00 SQ. FT.
NEW 24' LIMESTONE PARKING (PERMEABLE) = 4686.00 SQ. FT.
BUILDING AREA = 8,760 SQ. FT.
TOTAL AREA = 21,246.00 SQ. FT.

LOCATION
SQUARE H DOWNMAN ROAD SUBDIVISION THIRD DISTRICT, NEW ORLEANS ORLEANS PARISH, LOUISIANA

PLANNING
ZONED - COMMERCIAL

FLOOD ZONE
ZONE X

BUILDING ELEVATION
BASE FLOOD ELEVATION - 1/A
FINISHED FLOOR ELEVATION - .95'



SITE PLAN
SCALE: 1" = 10'-0"

REVISIONS	DATE
# DESCRIPTION	

DAMMON ENGINEERING, INC.
LOUISIANA & MISSISSIPPI

Chief Engineer: Brian Mistich, PE
554 Old Spanish Trail
Slidell, LA 70458
www.dammonengineering.com
info@dammonengineering.com
PH: 985.649.5832

NEW FUNERAL HOME	
SHEET TITLE: SITE PLAN	
JOB No: 22946 DATE: 11-10-2020	
DRAWN BY: CKD	CHECKED BY: CKD

C101