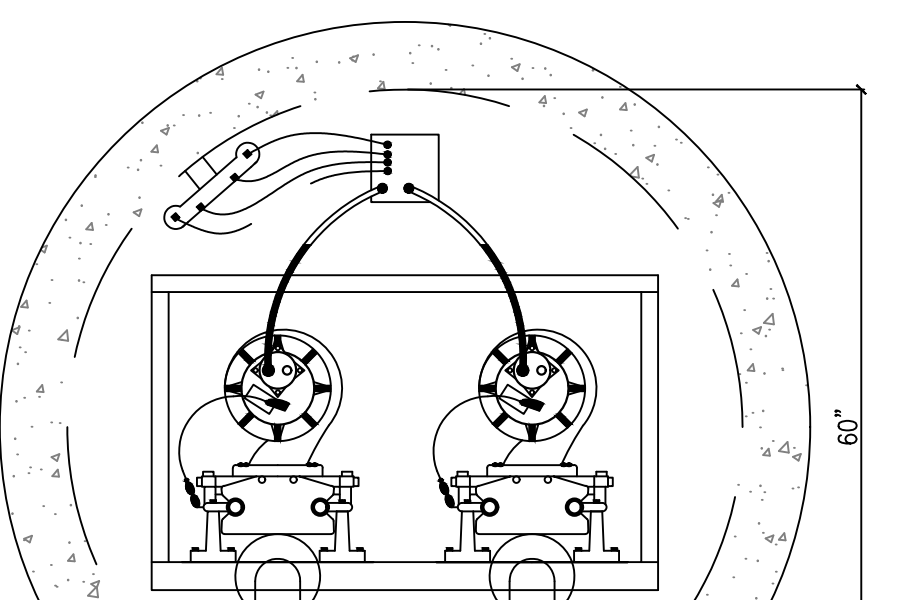
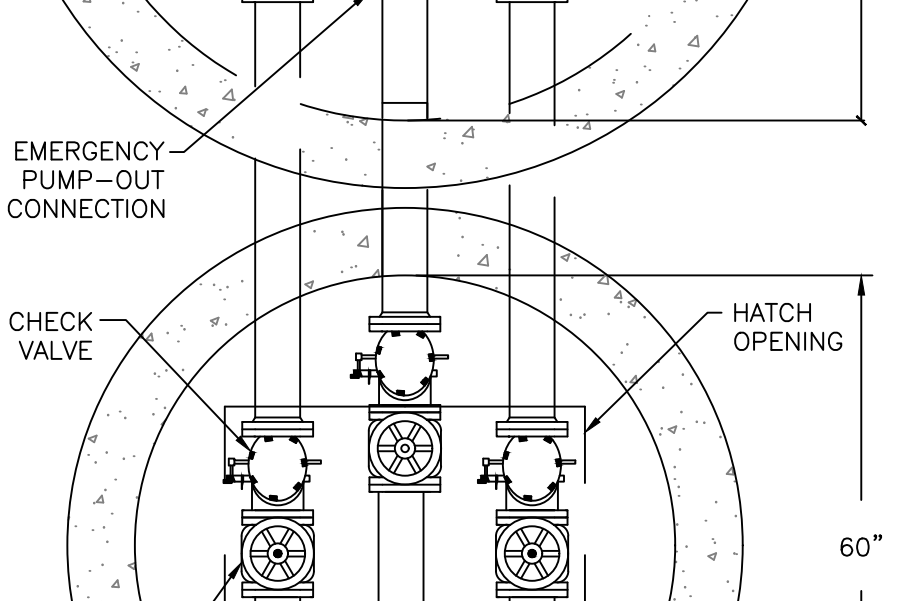


CONCRETE NOTES:
 1. CONCRETE STRENGTH IS 4,800 PSI @ 28 DAYS
 2. STRUCTURE JOINTS TO BE SEALED WITH FLAT BUTYL SEALANT (CONSEAL)
 3. REINFORCEMENT STEEL MEETS HS-20 LOADING REQUIREMENTS

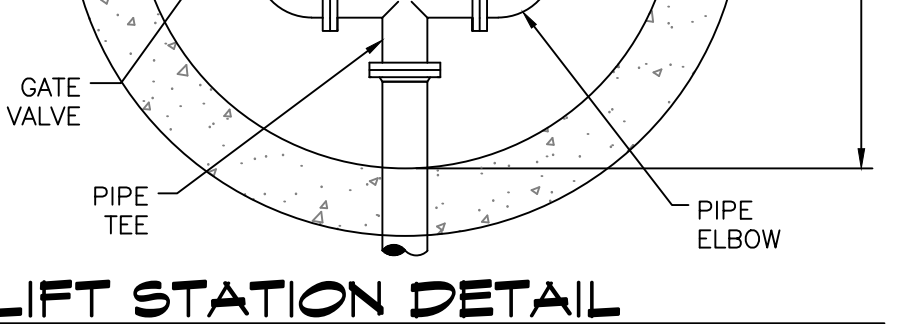
LIFT STATION DETAIL
 SCALE: N.T.S.



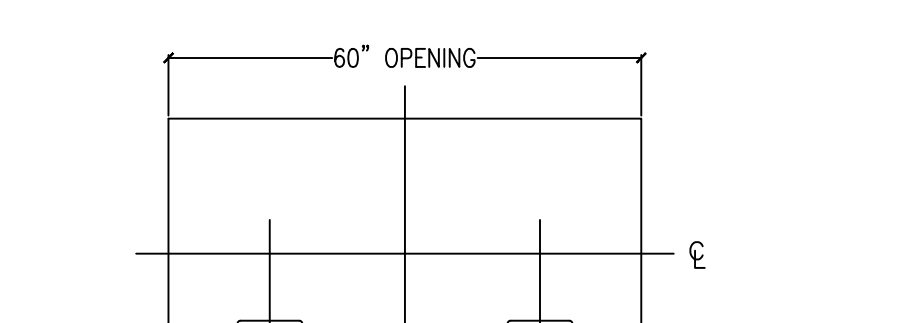
SEWER & WATER SEPERATION
 SCALE: N.T.S.



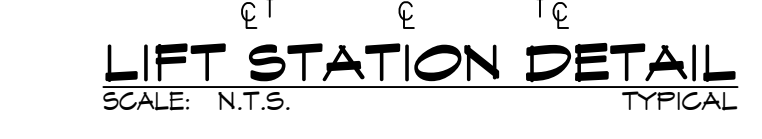
SEWER CLEAN OUT
 SCALE: N.T.S.



PIPE BEDDING
 SCALE: N.T.S.



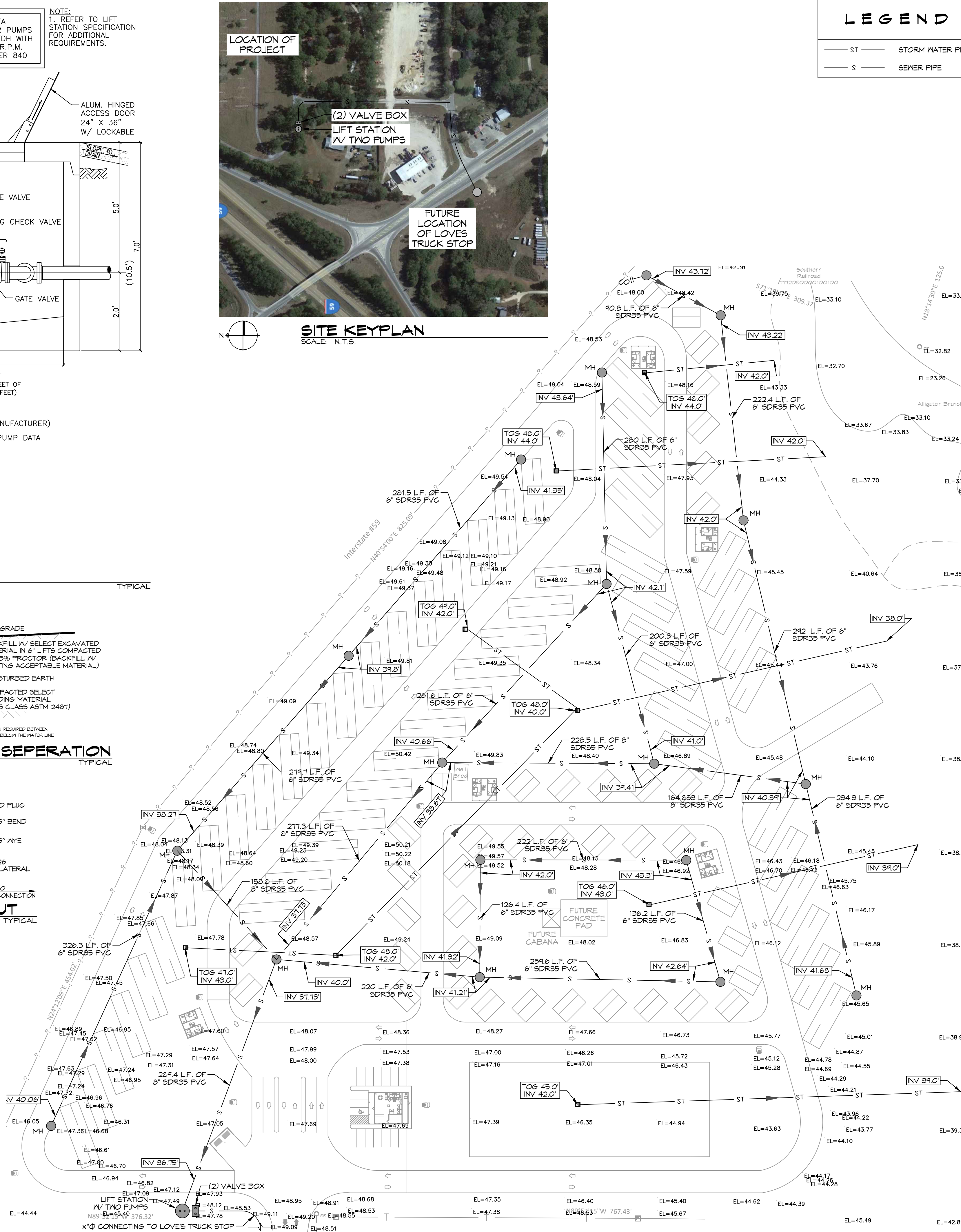
LIFT STATION DETAIL
 SCALE: N.T.S.



LIFT STATION DETAIL
 SCALE: N.T.S.



SITE KEYPLAN
 SCALE: N.T.S.



SEWERAGE & DRAINAGE PLAN
 SCALE: 1" = 60'-0"

LEGEND

— ST —	STORM WATER PIPE
— S —	SEWER PIPE

GENERAL NOTES

1. PROVIDE ALL LABOR, MATERIAL AND EQUIPMENT FOR A COMPLETE OPERATING SYSTEM. CONTRACTOR IS TO FIELD VERIFY ALL EXISTING UTILITY LOCATIONS, ELEVATIONS, AND INVERTS PRIOR TO COMMENCING ANY WORK. CONTRACTOR SHALL PAY NECESSARY FEES FOR THE UTILITIES CONNECTIONS.
2. CONTRACTOR TO BE RESPONSIBLE TO VERIFY ANY INVERTS AND SET NEW INVERTS OF SEWAGE AND DRAINAGE PIPES.
3. ALL WORK AND MATERIAL TO COMPLY STRICTLY TO THE LATEST LOCAL CITY PARISH, STATE, AND NATIONAL GOVERNING CODES.
4. SEWAGE LINES 3" AND SMALLER SHALL BE SLOPED 1/4" PER FOOT AND LINES THAT ARE 4" AND LARGER SHALL BE SLOPED 1/8" PER FOOT.

DAMMON ENGINEERING, INC.
 LOUISIANA & MISSISSIPPI
 Chief Engineer: Brian Watch, PE
 554 Old Spanish Trail
 Slidell, LA 70488
 www.dammonengineering.com
 info@dammonengineering.com
 PH: 985.649.3532

#	DESCRIPTION	DATE

SEAL:

NEW RECREATIONAL RV SITE
EXIT 1 R.V. LLC
 CLYDE WETZLER ROAD
 NICHOLSON MS 39555 (PH) 98466
 JOB No: 2456 DATE: 03-21-2022
 DRAWN BY: C&D CHECKED BY: C&D

FORCE MAIN TESTING

FORCE MAIN TESTING:

1. PRESSURE TESTING SHALL BE CONDUCTED IN ACCORDANCE WITH ASTM F 2164, FIELD LEAK TESTING OF POLYETHYLENE
2. PRESSURE TESTING SYSTEMS USING HYDROSTATIC PRESSURE. THE HDPE PIPE SHALL BE FILLED WITH WATER, RAISED TO TEST PRESSURE AND ALLOWED TO STABILIZE.
3. THE TEST PRESSURE SHALL BE 1.5 TIMES THE OPERATING PRESSURE AT THE LOWEST POINT IN THE SYSTEM. IN ACCORDANCE WITH SECTION 9.0, THE PIPE SHALL PASS IF THE FINAL PRESSURE IS WITH 5% OF THE TEST PRESSURE FOR 1 HOUR. FOR SAFETY 4. REASONS, HYDROSTATIC TESTING ONLY WILL BE USED.
5. CONTRACTOR SHALL INSURE THAT THE FORCE MAIN AND ALL CONNECTIONS ARE LEAK FREE ACCORDING TO TESTING.
6. IF NECESSARY CONTRACTOR SHALL VIDEO CAMERA THE INSIDE OF THE 6" FORCE MAIN TO DETERMINE OBSTRUCTIONS THAT MAY IMPEDE THE INSERTION AND INSTALLATION OF THE 3" HDPE LINE.
7. CONTRACTOR SHALL DETERMINE THE CONDITION OF THE CONNECTING POINT, AND VIABILITY OF THE EXISTING FORCE MAIN INTERCONNECTING WITH THE WHISPERWOOD TREATMENT COLLECTION SYSTEM. CONTRACTOR SHALL COORDINATE WITH THE PELICAN POINT APARTMENTS UTILITY SUPERVISOR TO SCHEDULE THE INTERCONNECTION TIME. CONTRACTOR SHALL INSURE THE CONNECTION IS VISIBLE AND ACCESSIBLE. ANY CONFLICTS WITH INSTALLATION SHALL BE SHARED WITH OWNER AND ENGINEER TO RESOLVE.

SHEET TITLE:
 SITE UTILITY PLAN

DRAWING NUMBER:
C104

SHEET No: 1 of 1