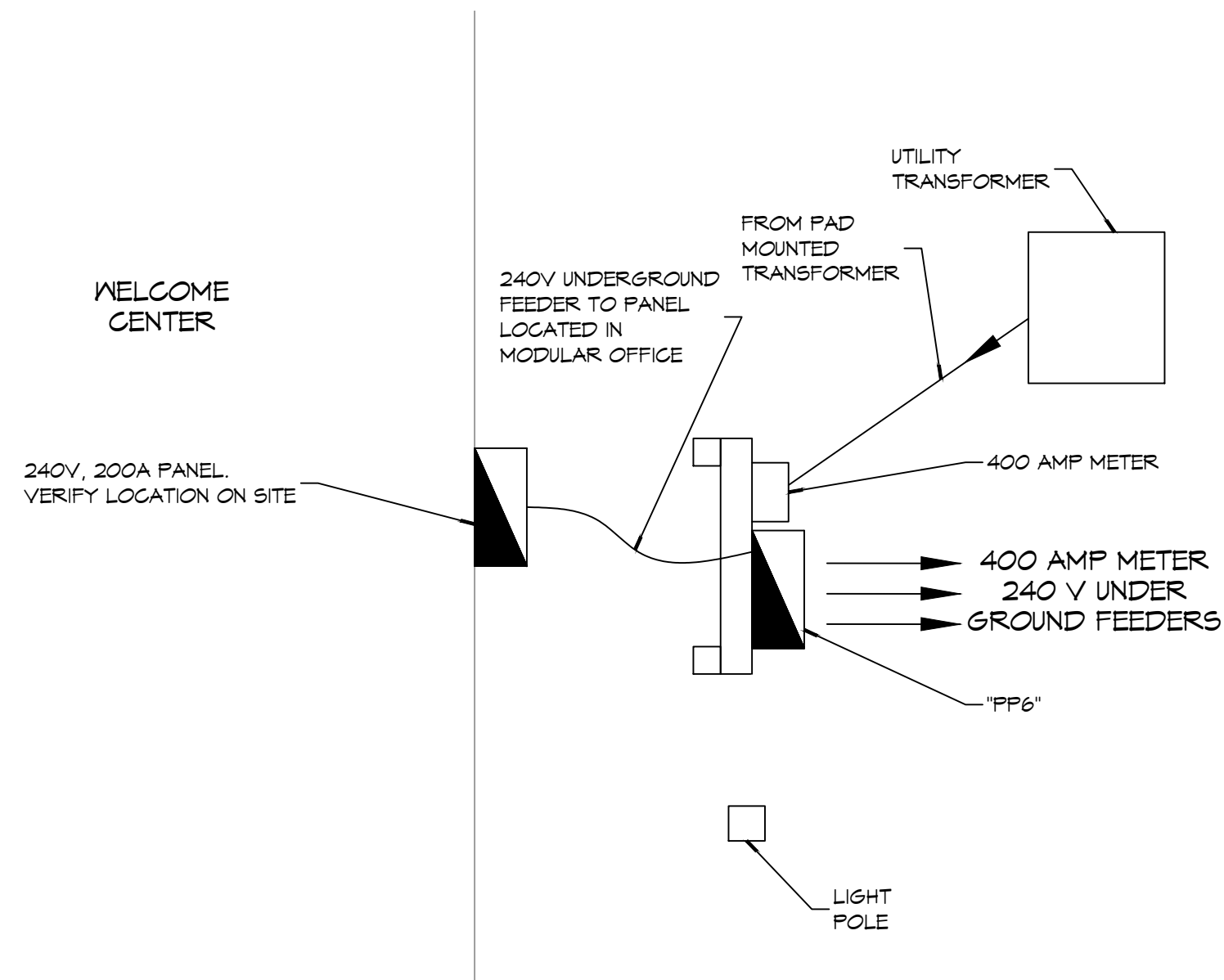
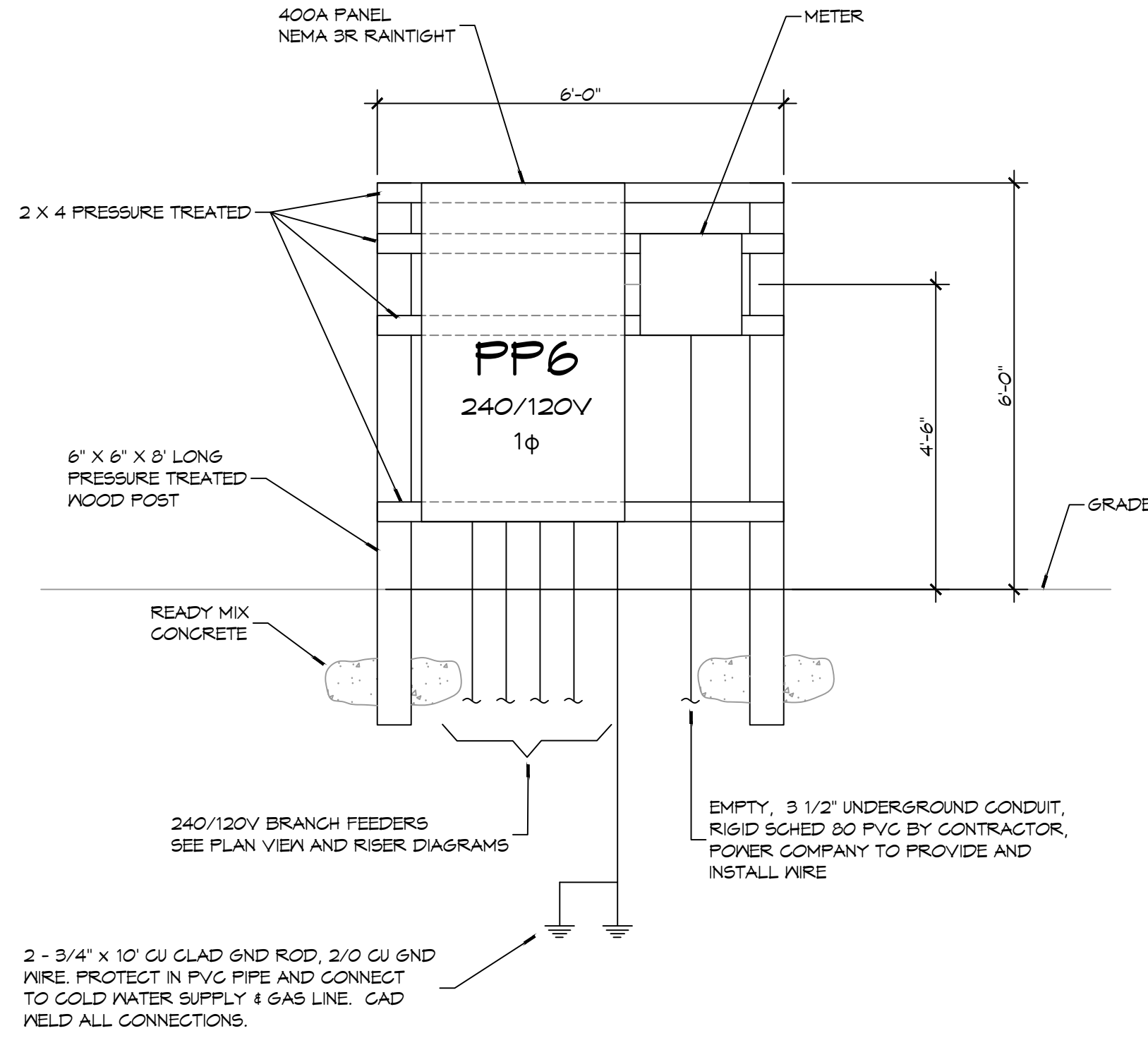


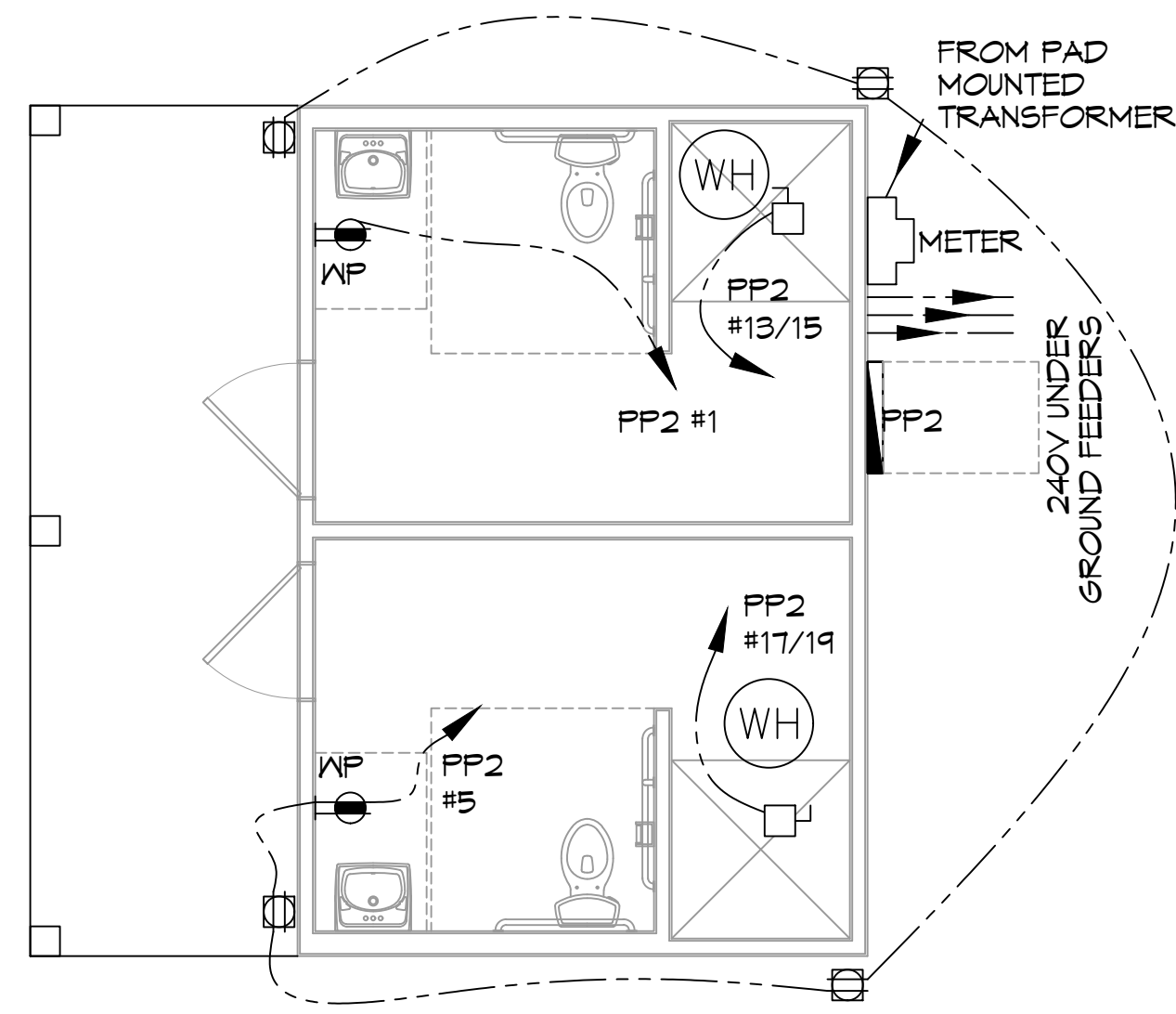
FILE NAME: J:\Projects\360 Office\360 Office.dwg
 PLOT DATE: 05/28/2024 10:58:32 AM
 PLOT BY: JMM



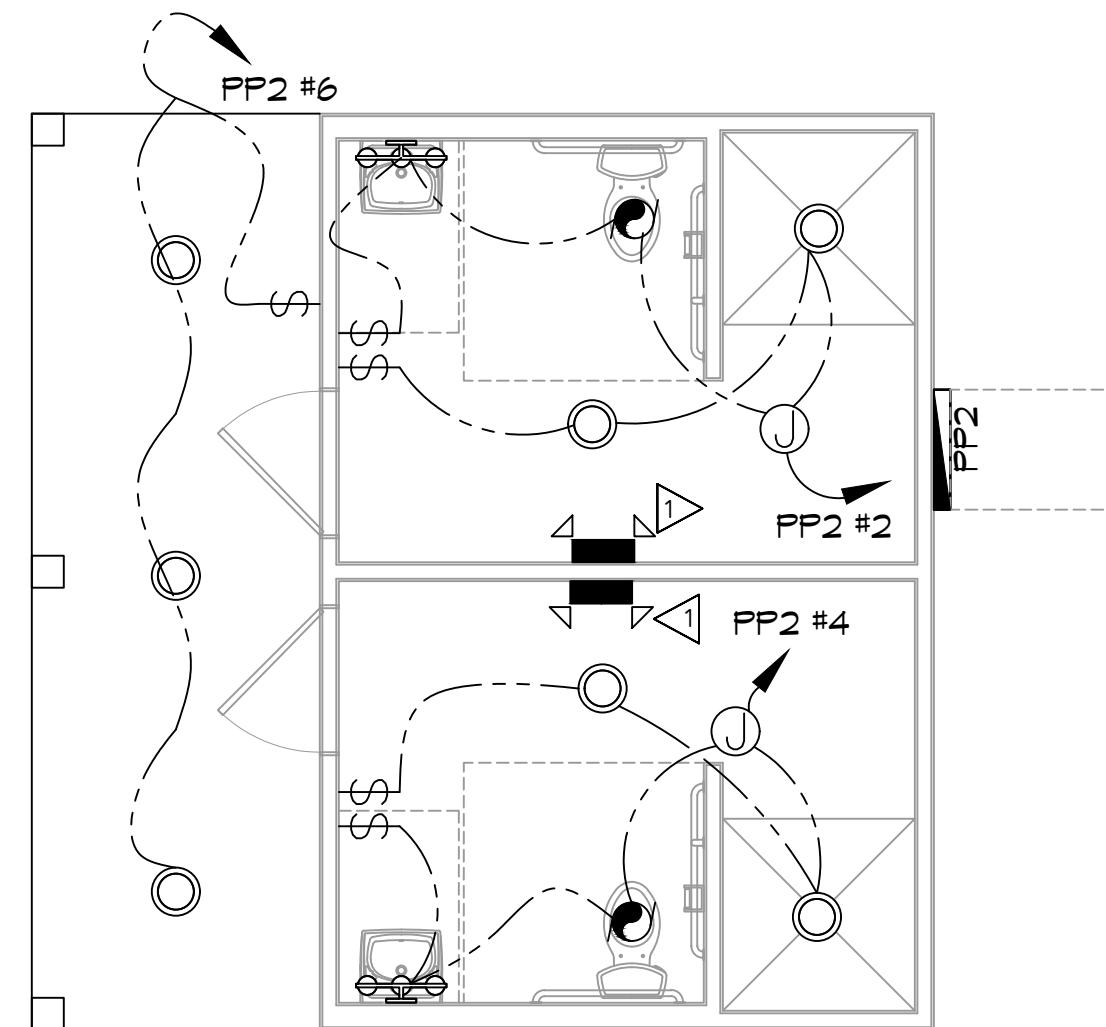
36 OFFICE POWER PLAN
SCALE: 1/4" = 1'-0"



37 RESTROOM POWER PLAN
SCALE: 1/4" = 1'-0"



38 RESTROOM LIGHTING PLAN
SCALE: 1/4" = 1'-0"



39 RESTROOM LIGHTING PLAN
SCALE: 1/4" = 1'-0"

LIGHTING LEGEND

- EMERGENCY LIGHT FIXTURE
- EXIT LIGHT FIXTURE - WALL MOUNTED
- LED EXTERIOR WALL MOUNTED LIGHT FIXTURE
- LED VANITY LIGHT
- CIRCUIT HOME RUN
- LIGHT SWITCH 120V COMMERCIAL GRADE
- LED RECESSED LIGHT
- EXHAUST FAN SEE MECH.
- JUNCTION BOX

POWER LEGEND

- STANDARD 120V DUPLEX RECEPTACLE 18" AFF (UNLESS OTHERWISE NOTED)
- GFCI DUPLEX RECEPTACLE
- WEATHER PROOF GFI SOFFIT MOUNTED
- STANDARD 240V DRYER RECEPTACLE
- WEATHER-PROOF GFCI DUPLEX RECEPTACLE MOUNTED AT 30" AFF (UNLESS OTHERWISE NOTED)
- DISCONNECT

KEYED NOTES

1. PROVIDE CONNECTION TO UN-SWITCHED HOT OF LIGHTING CIRCUIT AND SHALL HAVE 90 MINUTE EMERGENCY BATTERY BACKUP.

GENERAL POWER NOTES

1. ALL WORK SHALL CONFORM TO THE LATEST EDITION OF THE NATIONAL ELECTRICAL CODE, THE GOVERNING ELECTRICAL CODE AND ALL OTHER INSPECTION DEPARTMENTS HAVING JURISDICTION. OBTAIN CERTIFICATES OR APPROVAL WHERE REQUIRED. ELECTRICAL CONTRACTOR SHALL VERIFY ALL WIRE AND CONDUIT SIZES FOR MECHANICAL EQUIPMENT TO BE INSTALLED.
2. ALL MATERIALS FURNISHED SHALL BE NEW AND SHALL BE U.L. LISTED.
3. THE DRAWINGS INDICATE SIZE AND GENERAL LOCATION OF WORK. SCALE DIMENSIONS SHALL NOT BE USED. THE EXACT LOCATION OF ALL LIGHTING FIXTURES, RECEPTACLES AND TELEPHONE OUTLETS, ETC. SHALL BE DETERMINED BY ACTUAL CONDITIONS IN THE FIELD.
4. PRIOR TO BIDDING, CONTRACTOR SHALL VISIT THE JOB SITE AND FAMILIARIZE THEMSELVES WITH THE EXISTING CONDITIONS.
5. ELECTRICAL CONTRACTOR SHALL COORDINATE HIS WORK WITH OTHER TRADES AND WITH OTHER CONTRACTORS WHOSE WORK MAY AFFECT THIS INSTALLATION.
6. ELECTRICAL CONTRACTOR SHALL COORDINATE INCOMING ELECTRICAL SERVICE WITH UTILITY COMPANY AND INCLUDE IN HIS BID ALL CHARGES AND FEES INCURRED IN MODIFICATIONS.
7. ELECTRICAL CONTRACTOR SHALL COORDINATE THE TELEPHONE INSTALLATION WITH THE TELEPHONE COMPANY AND THE GENERAL CONTRACTOR.
8. ELECTRICAL CONTRACTOR, BEFORE INSTALLING ANY OF THE WORK, SHALL SEE THAT IT DOES NOT INTERFERE WITH CLEARANCES REQUIRED FOR FINISHED CEILING, HANG CEILING, PLASTER PARTITIONS, WALLS, ETC. AS SHOWN IN THE ARCHITECTURAL DRAWINGS AND DETAILS. IF ANY WORK IS INSTALLED AND IT LATER DEVELOPS THAT SUCH DETAILS OR DESIGN CANNOT BE FOLLOWED, THE CONTRACTOR, AT HIS OWN EXPENSE, SHALL MAKE SUCH CHANGES IN THE WORK AS DIRECTED BY THE ARCHITECT, AS WELL AS TO PERMIT THE INSTALLATION OF THE ARCHITECTURAL WORK AS SHOWN ON THE PLANS AND DETAILS.
9. PERFORM TEST REQUIRED BY THE OWNER OR THE ENGINEER IN CONNECTION WITH THE OPERATION OF THE ELECTRICAL SYSTEM IN THE BUILDING. ALL TESTS SHALL BE MADE IN ACCORDANCE WITH THE LATEST STANDARD OF THE IEEE AND THE NATIONAL ELECTRICAL CODE.
10. MINIMUM CONDUCTOR SIZE SHALL BE #12, 600V INSULATION. MINIMUM SIZE CONDUIT SHALL BE 3/4" ELECTRICAL METALLIC TUBING (EMT) FOR INTERIOR USE, 3/4" RIGID ALUMINUM FOR EXTERIOR USE ABOVE GRADE AND 1" SCHEDULE 40 PVC, BURIED A MINIMUM OF 18" FOR NON-VEHICULAR TRAFFIC AREAS, FOR CONDUITS BELOW GRADE. EMT SHALL BE USED WITH METAL STUD CONSTRUCTION AND ALL ASSEMBLY OCCUPANCIES. 6 FT LENGTH MC CABLE IS ALLOWED ABOVE DROPPED CEILING. INTERIOR FITTINGS SHALL BE CAST WHERE EXPOSED ON WALLS, AND EXTERIOR FITTINGS SHALL BE CAST BOXES WITH NEMA 3R COVER(S).
11. CONTRACTOR SHALL INSTALL WIRING AND OTHER CIRCUIT COMPONENTS TO MATCH EQUIPMENT ACTUALLY INSTALLED.
12. ALL 120V RUNS LONGER THAN 60 FEET SHALL BE #10 AWG AND 277V RUNS LONGER THAN 150 FEET SHALL BE #10 AWG UNLESS NOTED OTHERWISE.
13. INSTALL GROUND FAULT RECEPTACLES AT RECEPTACLE LOCATIONS WITHIN 5' OF SINKS OR LAVATORIES, AND AT EXTERIOR LOCATIONS. EXTERIOR RECEPTACLES SHALL ALSO BE WATERPROOF. ALL RECEPTACLES IN A KITCHEN AREA SHALL HAVE GROUND FAULT PROTECTION.
14. BONDING AND GROUNDING SHALL BE IN ACCORDANCE WITH NFPA 70:250-63, NFPA 250-23, 250-11 & 250-12.
15. GROUND NEUTRAL IN ACCORDANCE WITH NFPA 70:250-23b.
16. FUSES SHALL BE ITC CLASS K5, 250 VOLT, 200,000 AMP INTERRUPTING CAP.
17. PROVIDE SERVICES OF A FIRE/SMOKE DETECTION AND ALARM COMPANY TO DESIGN AND INSTALL ALARM SYSTEM TO MEET REQUIREMENTS OF THE STATE FIRE MARSHALL AND THE FIRE DISTRICT.
18. EXTERIOR LIGHTING SHALL BE SHADED OR INWARDLY DIRECTED IN SUCH A MANNER SO THAT NO DIRECT LIGHTING OR GLARE IS CAST BEYOND THE PROPERTY LINE. THE INTENSITY OF SUCH LIGHTING SHALL NOT EXCEED ONE FOOT CANDLE AS MEASURED AT THE ABUTTING PROPERTY LINE.
19. ALL ELECTRICAL, MECHANICAL AND PLUMBING PENETRATING FIRE PARTITIONS SHALL BE FIRE CAULKED. (PENETRATIONS THROUGH RATED CONSTRUCTION SHALL BE SEALED WITH A MATERIAL CAPABLE OF PREVENTING THE PASSAGE OF FLAMES AND HOT GASES WHEN TESTED IN ACCORDANCE WITH ASTM-E814).
20. VERIFY ELECTRICAL CONNECTIONS PER MANUFACTURER'S RECOMMENDATIONS.

GENERAL LIGHTING NOTES

1. ALL WORK SHALL COMPLY WITH APPLICABLE NATIONAL, STATE, AND LOCAL CODES, RULES, REGULATIONS, AND REQUIREMENTS OF THE SERVICE UTILITY COMPANY.
2. GENERAL CONTRACTOR SHALL NOTIFY THE ARCHITECT IMMEDIATELY IF ANY CONFLICTS OCCUR BETWEEN LIGHTING AND ANY OTHER TRADE. DO NOT PROCEED WITH INSTALLATION IN THAT AREA UNTIL CONFLICT HAS BEEN RESOLVED TO THE SATISFACTION OF THE ARCHITECT AND ENGINEER.
3. REFER TO ARCHITECTURAL DRAWINGS FOR EXACT LOCATION AND MOUNTING INSTRUCTIONS FOR ALL LIGHT FIXTURES. NOTIFY THE ARCHITECT AND ENGINEER OF ANY DISCREPANCIES BETWEEN THESE PLANS AND THE ARCHITECTURAL PLANS RELATING TO QUANTITY, TYPE AND LOCATION OF DEVICES AND/OR FIXTURES.
4. WHEN SPECIFIC LIGHT FIXTURE HAS BEEN SPECIFIED IN THE FIXTURE SCHEDULE, ELECTRICAL CONTRACTOR SHALL PROVIDE COMPLETE ASSEMBLY INCLUSIVE ALL PARTS AND HARDWARE TO INSURE PROPER FUNCTIONING FIXTURE.
5. ALL CONDUCTORS SHALL BE A MINIMUM OF #12 AWG UNLESS NOTED OTHERWISE.
6. ALL 120V RUNS LONGER THAN 60 FEET SHALL BE #10 AWG AND 277V RUNS LONGER THAN 150 FEET SHALL BE #10 AWG UNLESS NOTED OTHERWISE.
7. ALL CONDUCTORS SHALL BE COPPER.
8. WHERE CONDUCTOR SIZES ARE NOTED ON DRAWINGS, THAT WIRE SIZE SHALL BE THROUGH THE ENTIRE RUN UNLESS OTHERWISE NOTED.
9. MOUNTED LIGHT SWITCHES 48" AFF UNLESS NOTED OTHERWISE ON ARCHITECTURAL DRAWINGS.
10. WHERE MORE THAN ONE SWITCH OCCURS IN THE SAME LOCATION, THEY SHALL BE INSTALLED IN A GANG TYPE BOX UNDER ONE COVER PLATE. ALL GANGED SWITCHES SHALL HAVE A COMMON SEAMLESS FACEPLATE. EACH MULTI-GANGED BOX SHALL BE NO MORE THAN SIX (6) SWITCHES WIDE. WHERE MORE THAN SIX (6) SWITCHES ARE SHOWN AT ONE (1) LOCATION, ADDITIONAL MULTI-GANGED BOXES SHALL BE STACKED VERTICALLY AND THE WIDTH OF THE MULTI-GANGEDS SHALL BE AS EVEN AS POSSIBLE.
11. EACH DIMMER SWITCH SHALL HAVE A WATTAGE RATING 25% HIGHER THAN THE TOTAL WATTAGE OF ALL LIGHTS TO BE CONTROLLED BY THE DIMMER. DIMMER SIZES 600, 1000, 1500, AND 2000 WATTS. LUTRON NOVA T-STAR. WHERE SWITCHES ARE GANGED WITH DIMMERS, THE SWITCHES SHALL ALSO BE LUTRON NOVA T-STAR. FLUORESCENT AND LOW VOLTAGE DIMMERS SHALL BE LUTRON NOVA T-STAR.
12. WHERE FLUORESCENT FIXTURES ARE SHOWN TO BE DIMMED, THE FIXTURES SHALL HAVE DIMMING TYPE BALLASTS WHICH ARE COMPATIBLE WITH THE SPECIFIED DIMMERS.
13. WHERE LED FIXTURES/LAMPS ARE SHOWN TO BE DIMMED, THE DIMMER SHALL BE COMPATIBLE WITH THE FIXTURE/LAMP SPECIFIED OR PROVIDED.
14. ALL EMERGENCY EXIT LIGHT FIXTURES SHALL HAVE 90 MINUTE BATTERY BACKUP WITH INTEGRAL TEST BUTTON AND SHALL BURN CONTINUOUSLY.
15. ALL FLUORESCENT FIXTURES THAT UTILIZE DOUBLE-ENDED LAMPS AND CONTAIN BALLASTS SHALL BE PROVIDED WITH A DISCONNECTING MEANS IN ACCORDANCE WITH NEC 410.735.

DAMMON ENGINEERING, INC.
 LOUISIANA & MISSISSIPPI
 Chief Engineer: Brian Mitchell, PE
 554 Old Spanish Trail
 Slidell, LA 70458
 www.dammonengineering.com
 info@dammonengineering.com
 PH: 985.649.8832

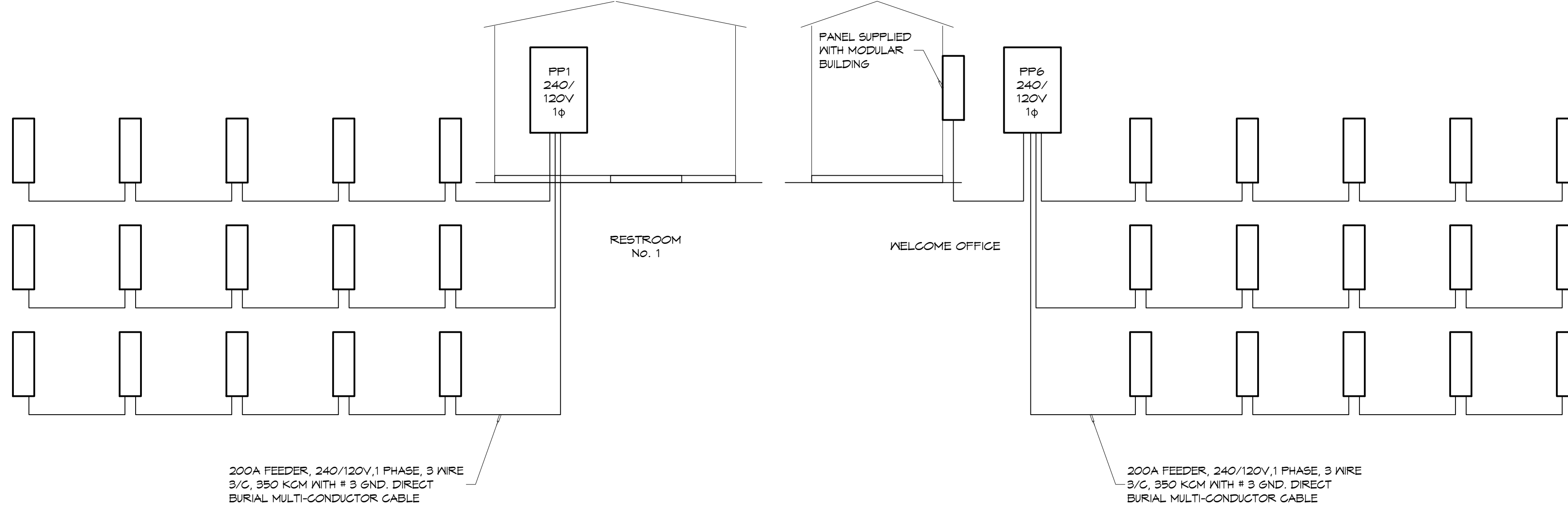
#	DESCRIPTION	DATE

SEAL: _____

NEW RECREATIONAL RV SITE
EXIT 1 R.V. LLC.
 CLYDE METZGER ROAD
 NICHOLS, LA 70561
 JOB No: 2456 DATE: 05-28-2024
 DRAWN BY: C-CD CHECKED BY: BAM

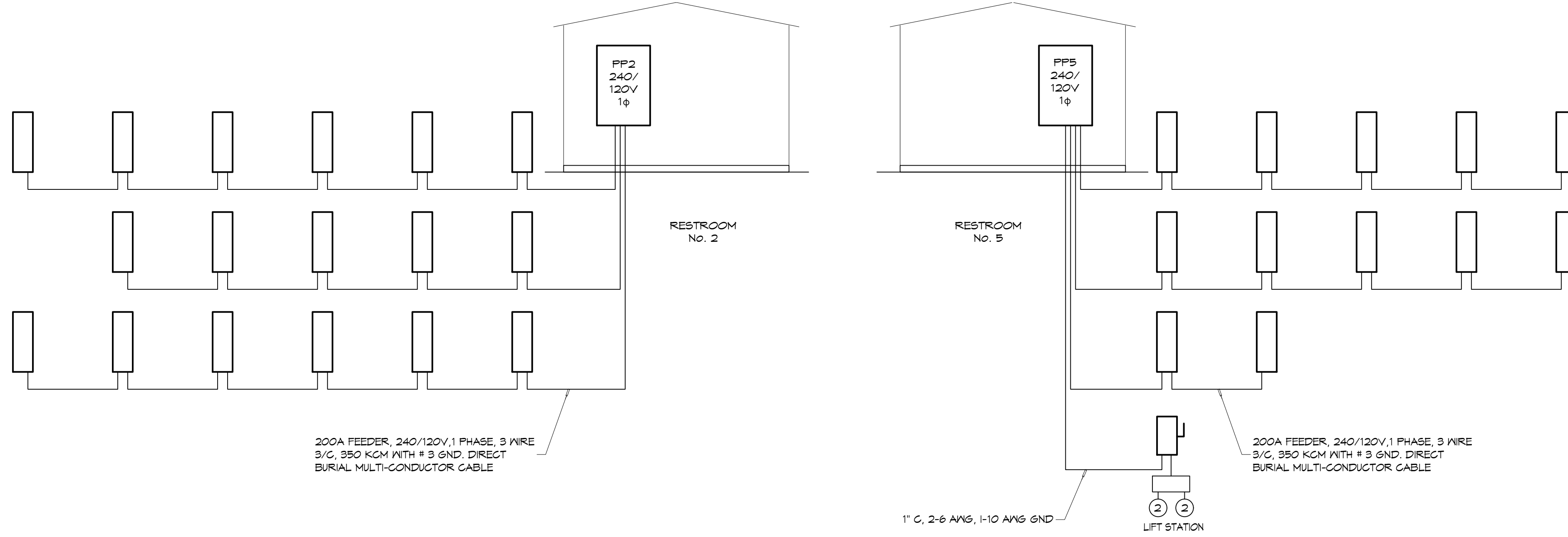
SHEET TITLE:
ELECTRICAL POWER PLANS
 DRAWING NUMBER:
E101
 SHEET No: 16 OF 19

ELECTRICAL LOAD SUMMARY TRANSFORMER 1					
POWER COMPANY:	COAST ELECTRIC				
PROJECT NAME:	EXT 1 RV RESORT				
PROJECT ADDRESS:	CLYDE MEITZER				
CITY TOWN:	NICHOLSON, MISSISSIPPI				
INTENDED USER:	RV PARK				
REQUIRED SERVICE:	240/120	VOLTS	1	PHASE	3
SERV ENTR SIZE:	400	AMPS			
HVAC TONNAGE:		TONS			
LARGEST MOTOR:		HP			
LOAD SOURCE	10 KVA	30 KVA	OR	10 KN	30 KN
BUILDING LIGHTING	1,360.0				
ELECTRIC WATER HEATING	10,000.0				
HEAT PUMPS					
SUPPLEMENTAL HEAT SYSTEMS					
AIR COND CONDENSING UNITS					
ELEC HEATING (PRIMARY) AHUS					
COOKING					
REFRIGERATION					
RECEPTACLES (STANDARD)	1,080.0				
RECEPTACLES (COMPUTER)					
TOTAL MOTORS (EXCLUDE HVAC)					
EXTERIOR LIGHTING	500.0				
MISCELLANEOUS - CEILING FANS	1,000.0				
OTHER - 15 RV SITES	153,600.0				
TOTAL CONNECTED LOAD	167,540.0				



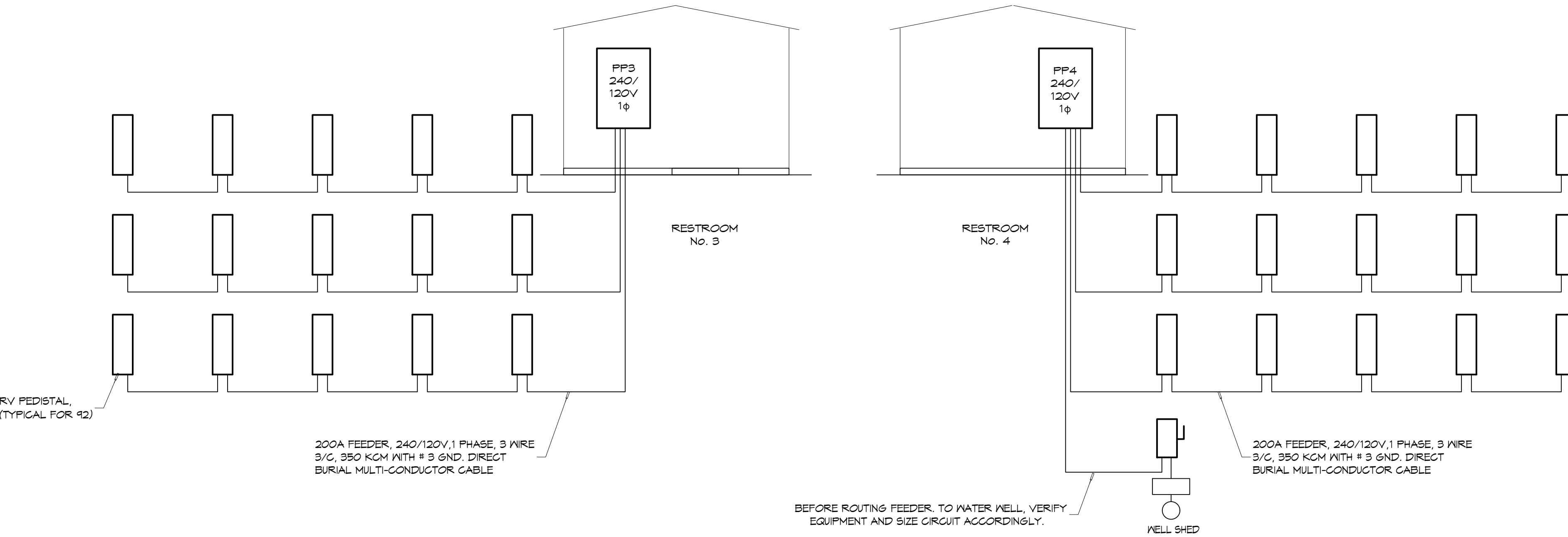
ELECTRICAL LOAD SUMMARY TRANSFORMER 6					
POWER COMPANY:	COAST ELECTRIC				
PROJECT NAME:	EXT 1 RV RESORT				
PROJECT ADDRESS:	CLYDE MEITZER				
CITY TOWN:	NICHOLSON, MISSISSIPPI				
INTENDED USER:	RV PARK				
REQUIRED SERVICE:	240/120	VOLTS	1	PHASE	3
SERV ENTR SIZE:	400	AMPS			
HVAC TONNAGE:		TONS			
LARGEST MOTOR:		HP			
LOAD SOURCE	10 KVA	30 KVA	OR	10 KN	30 KN
BUILDING LIGHTING	1,360.0				
ELECTRIC WATER HEATING	5,000.0				
HEAT PUMPS					
SUPPLEMENTAL HEAT SYSTEMS					
AIR COND CONDENSING UNITS	2,000.0				
ELEC HEATING (PRIMARY) AHUS	3,600.0				
COOKING					
REFRIGERATION	3,600.0				
RECEPTACLES (STANDARD)	1,780.0				
RECEPTACLES (COMPUTER)					
TOTAL MOTORS (EXCLUDE HVAC)					
EXTERIOR LIGHTING	500.0				
MISCELLANEOUS - CEILING FANS	4,120.0				
OTHER - 15 RV SITES	144,000.0				
TOTAL CONNECTED LOAD	172,100.0				

ELECTRICAL LOAD SUMMARY TRANSFORMER 2					
POWER COMPANY:	COAST ELECTRIC				
PROJECT NAME:	EXT 1 RV RESORT				
PROJECT ADDRESS:	CLYDE MEITZER				
CITY TOWN:	NICHOLSON, MISSISSIPPI				
INTENDED USER:	RV PARK				
REQUIRED SERVICE:	240/120	VOLTS	1	PHASE	3
SERV ENTR SIZE:	400	AMPS			
HVAC TONNAGE:		TONS			
LARGEST MOTOR:		HP			
LOAD SOURCE	10 KVA	30 KVA	OR	10 KN	30 KN
BUILDING LIGHTING	1,360.0				
ELECTRIC WATER HEATING	10,000.0				
HEAT PUMPS					
SUPPLEMENTAL HEAT SYSTEMS					
AIR COND CONDENSING UNITS					
ELEC HEATING (PRIMARY) AHUS					
COOKING					
REFRIGERATION					
RECEPTACLES (STANDARD)	1,080.0				
RECEPTACLES (COMPUTER)					
TOTAL MOTORS (EXCLUDE HVAC)					
EXTERIOR LIGHTING	500.0				
MISCELLANEOUS - CEILING FANS	1,000.0				
OTHER - 17 RV SITES	163,200.0				
TOTAL CONNECTED LOAD	177,140.0				



ELECTRICAL LOAD SUMMARY TRANSFORMER 5					
POWER COMPANY:	COAST ELECTRIC				
PROJECT NAME:	EXT 1 RV RESORT				
PROJECT ADDRESS:	CLYDE MEITZER				
CITY TOWN:	NICHOLSON, MISSISSIPPI				
INTENDED USER:	RV PARK				
REQUIRED SERVICE:	240/120	VOLTS	1	PHASE	3
SERV ENTR SIZE:	400	AMPS			
HVAC TONNAGE:		TONS			
LARGEST MOTOR:		2 HP			
LOAD SOURCE	10 KVA	30 KVA	OR	10 KN	30 KN
BUILDING LIGHTING	1,360.0				
ELECTRIC WATER HEATING	10,000.0				
HEAT PUMPS					
SUPPLEMENTAL HEAT SYSTEMS					
AIR COND CONDENSING UNITS					
ELEC HEATING (PRIMARY) AHUS					
COOKING					
REFRIGERATION					
RECEPTACLES (STANDARD)	1,080.0				
RECEPTACLES (COMPUTER)					
TOTAL MOTORS (EXCLUDE HVAC)	6,600.0				
EXTERIOR LIGHTING	500.0				
MISCELLANEOUS - CEILING FANS	1,000.0				
OTHER - 15 RV SITES	115,200.0				
TOTAL CONNECTED LOAD	139,740.0				

ELECTRICAL LOAD SUMMARY TRANSFORMER 3					
POWER COMPANY:	COAST ELECTRIC				
PROJECT NAME:	EXT 1 RV RESORT				
PROJECT ADDRESS:	CLYDE MEITZER				
CITY TOWN:	NICHOLSON, MISSISSIPPI				
INTENDED USER:	RV PARK				
REQUIRED SERVICE:	240/120	VOLTS	1	PHASE	3
SERV ENTR SIZE:	400	AMPS			
HVAC TONNAGE:		TONS			
LARGEST MOTOR:		HP			
LOAD SOURCE	10 KVA	30 KVA	OR	10 KN	30 KN
BUILDING LIGHTING	1,360.0				
ELECTRIC WATER HEATING	10,000.0				
HEAT PUMPS					
SUPPLEMENTAL HEAT SYSTEMS					
AIR COND CONDENSING UNITS					
ELEC HEATING (PRIMARY) AHUS					
COOKING					
REFRIGERATION					
RECEPTACLES (STANDARD)	1,080.0				
RECEPTACLES (COMPUTER)					
TOTAL MOTORS (EXCLUDE HVAC)					
EXTERIOR LIGHTING	500.0				
MISCELLANEOUS - CEILING FANS	1,000.0				
OTHER - 15 RV SITES	144,000.0				
TOTAL CONNECTED LOAD	157,440.0				



ELECTRICAL LOAD SUMMARY TRANSFORMER 4					
POWER COMPANY:	COAST ELECTRIC				
PROJECT NAME:	EXT 1 RV RESORT				
PROJECT ADDRESS:	CLYDE MEITZER				
CITY TOWN:	NICHOLSON, MISSISSIPPI				
INTENDED USER:	RV PARK				
REQUIRED SERVICE:	240/120	VOLTS	1	PHASE	3
SERV ENTR SIZE:	400	AMPS			
HVAC TONNAGE:		TONS			
LARGEST MOTOR:		2 HP			
LOAD SOURCE	10 KVA	30 KVA	OR	10 KN	30 KN
BUILDING LIGHTING	1,360.0				
ELECTRIC WATER HEATING	10,000.0				
HEAT PUMPS					
SUPPLEMENTAL HEAT SYSTEMS					
AIR COND CONDENSING UNITS					
ELEC HEATING (PRIMARY) AHUS					
COOKING					
REFRIGERATION					
RECEPTACLES (STANDARD)	1,080.0				
RECEPTACLES (COMPUTER)					
TOTAL MOTORS (EXCLUDE HVAC)	6,600.0				
EXTERIOR LIGHTING	500.0				
MISCELLANEOUS - CEILING FANS	4,980.0				
OTHER - 15 RV SITE	144,000.0				
TOTAL CONNECTED LOAD	168,500.0				

RISER DIAGRAM
SCALE: NTS

DAMMON ENGINEERING, INC.
LOUISIANA & MISSISSIPPI

NEW RECREATIONAL RV SITE
EXT 1 RV RESORT, LLC.

CLYDE MEITZER ROAD
NICHOLSON MS 39446
JOB No: 03-20-2024
DATE: 2/28/24
DRAWN BY: D/D/JTL
CHECKED BY:

Chief Engineer: Brian Mistich, PE
554 Old Spanish Trail
Slidell, LA 70458
www.dammonengineering.com
info@dammonengineering.com
PH: 985.649.9832

#	DESCRIPTION	DATE

SEAL:

SHEET TITLE:
LOAD SUMMARIES

DRAWING NUMBER:
E103

SHEET No: 18 of 14

FILE NAME: A:_Client Jobs\11 - Cedar Bluffs - Comm\11-01-2024\11-01-2024 - 11-01-2024.dwg
 PLOT DATE: 11/01/2024 10:53:40 AM
 PLOT BY: JTL

PANEL SCHEDULE													
PANEL:		PP1 ELECTRICAL ROOM			INTERRUPTING RATING = 24 KAIC		VOLTAGE: ENCLASURE:		240/120V, 400A, 1Ø, 3W WITH MAIN BREAKER SURFACE MOUNTED IV EQUIPMENT GND BAR SQUARE-D, I-LINE PANELBOARD				
CKT NO	THHN WIRE SIZE	LOAD DESCRIPTION	BREAKER AMP POLE	LOAD (VA)	AD		LOAD (VA)	BREAKER POLE AMP	LOAD DESCRIPTION	THHN WIRE SIZE	CKT NO	GROUND BUS	
					AD	GP						GROUND WIRE (G)	GROUND WIRE (G)
1	#12	RECEPTACLES, BATH ROOM	20 1	540	540		550	1 20	BATH ROOM 1, EXHAUST FANS AND LIGHTS	#12	2		
3	#12	RECEPTACLE, WATER FOUNTAIN	20 1	1000	540		550	1 20	BATH ROOM 2, EXHAUST FANS AND LIGHTS	#12	4		
5	#12	RECEPTACLES, BATH ROOM	20 1	540	540		300	1 20	LIGHTS, CORRIDOR AND PORCH	#12	6		
7		SPARE	20 1		250		250	2 20	EXTERIOR POLE TOP LIGHTING	#10	8		
9		SPARE	30 2		250		250	1 20	SPARE		10		
11		SPARE	30 2					1 20	SPARE		12		
13	#10	WATER HEATER 1	30 2	2500	2500			1 20	SPARE		14		
15	#10	WATER HEATER 1	30 2	2500	2500			1 20	SPARE		16		
17	#10	WATER HEATER 2	30 2	2500	2500			1 20	SPARE		18		
19	#10	WATER HEATER 2	30 2	2500	2500			1 20	SPARE		20		
21		PREPARED SPACE	- 1					1 -	PREPARED SPACE		22		
23		PREPARED SPACE	- 1					1 -	PREPARED SPACE		24		
25		PREPARED SPACE	- 1					1 -	PREPARED SPACE		26		
27		PREPARED SPACE	- 1					1 -	PREPARED SPACE		28		
29		PREPARED SPACE	- 1					1 -	PREPARED SPACE		30		
31		PREPARED SPACE	- 1					1 -	PREPARED SPACE		32		
33		PREPARED SPACE	- 1					1 -	PREPARED SPACE		34		
35		PREPARED SPACE	- 1					1 -	PREPARED SPACE		36		
37	350 KCM	FEEEDER TO CAMPER SITES	200 2	28000	28000			1 -	PREPARED SPACE		38		
39	350 KCM	FEEEDER TO CAMPER SITES	200 2	24000	24000		24000	2 200	FEEEDER TO CAMPER SITES 350 KCM		40		
41	350 KCM	FEEEDER TO CAMPER SITES	200 2	24000	24000		24000	2 200	FEEEDER TO CAMPER SITES 350 KCM		42		
SOLID NEUTRAL NEUTRAL WIRE (N)				TOTAL CONNECTED LOAD (VA) = 167,540				GROUND BUS GROUND WIRE (G)					
				AD = 93,760		GP = 93,550							

PANEL SCHEDULE													
PANEL:		PP2 ELECTRICAL ROOM			INTERRUPTING RATING = 24 KAIC		VOLTAGE: ENCLASURE:		240/120V, 400A, 1Ø, 3W WITH MAIN BREAKER SURFACE MOUNTED IV EQUIPMENT GND BAR SQUARE-D, I-LINE PANELBOARD				
CKT NO	THHN WIRE SIZE	LOAD DESCRIPTION	BREAKER AMP POLE	LOAD (VA)	AD		LOAD (VA)	BREAKER POLE AMP	LOAD DESCRIPTION	THHN WIRE SIZE	CKT NO	GROUND BUS	
					AD	GP						GROUND WIRE (G)	GROUND WIRE (G)
1	#12	RECEPTACLES, BATH ROOM	20 1	540	540		550	1 20	BATH ROOM 1, EXHAUST FANS AND LIGHTS	#12	2		
3	#12	RECEPTACLE, WATER FOUNTAIN	20 1	1000	540		550	1 20	BATH ROOM 2, EXHAUST FANS AND LIGHTS	#12	4		
5	#12	RECEPTACLES, BATH ROOM	20 1	540	540		300	1 20	LIGHTS, CORRIDOR AND PORCH	#12	6		
7		SPARE	20 1		250		250	2 20	EXTERIOR POLE TOP LIGHTING	#10	8		
9		SPARE	30 2		250		250	1 20	SPARE		10		
11		SPARE	30 2					1 20	SPARE		12		
13	#10	WATER HEATER 1	30 2	2500	2500			1 20	SPARE		14		
15	#10	WATER HEATER 1	30 2	2500	2500			1 20	SPARE		16		
17	#10	WATER HEATER 2	30 2	2500	2500			1 20	SPARE		18		
19	#10	WATER HEATER 2	30 2	2500	2500			1 20	SPARE		20		
21		PREPARED SPACE	- 1					1 -	PREPARED SPACE		22		
23		PREPARED SPACE	- 1					1 -	PREPARED SPACE		24		
25		PREPARED SPACE	- 1					1 -	PREPARED SPACE		26		
27		PREPARED SPACE	- 1					1 -	PREPARED SPACE		28		
29		PREPARED SPACE	- 1					1 -	PREPARED SPACE		30		
31		PREPARED SPACE	- 1					1 -	PREPARED SPACE		32		
33		PREPARED SPACE	- 1					1 -	PREPARED SPACE		34		
35		PREPARED SPACE	- 1					1 -	PREPARED SPACE		36		
37	350 KCM	FEEEDER TO CAMPER SITES	200 2	28000	28000			1 -	PREPARED SPACE		38		
39	350 KCM	FEEEDER TO CAMPER SITES	200 2	28000	28000		24000	2 200	FEEEDER TO CAMPER SITES 350 KCM		40		
41	350 KCM	FEEEDER TO CAMPER SITES	200 2	28000	24000		24000	2 200	FEEEDER TO CAMPER SITES 350 KCM		42		
SOLID NEUTRAL NEUTRAL WIRE (N)				TOTAL CONNECTED LOAD (VA) = 177,140				GROUND BUS GROUND WIRE (G)					
				AD = 88,760		GP = 88,350							

PANEL SCHEDULE													
PANEL:		PP3 ELECTRICAL ROOM			INTERRUPTING RATING = 24 KAIC		VOLTAGE: ENCLASURE:		240/120V, 400A, 1Ø, 3W WITH MAIN BREAKER SURFACE MOUNTED IV EQUIPMENT GND BAR SQUARE-D, I-LINE PANELBOARD				
CKT NO	THHN WIRE SIZE	LOAD DESCRIPTION	BREAKER AMP POLE	LOAD (VA)	AD		LOAD (VA)	BREAKER POLE AMP	LOAD DESCRIPTION	THHN WIRE SIZE	CKT NO	GROUND BUS	
					AD	GP						GROUND WIRE (G)	GROUND WIRE (G)
1	#12	RECEPTACLES, BATH ROOM	20 1	540	540		550	1 20	BATH ROOM 1, EXHAUST FANS AND LIGHTS	#12	2		
3	#12	RECEPTACLE, WATER FOUNTAIN	20 1	1000	540		550	1 20	BATH ROOM 2, EXHAUST FANS AND LIGHTS	#12	4		
5	#12	RECEPTACLES, BATH ROOM	20 1	540	540		300	1 20	LIGHTS, CORRIDOR AND PORCH	#12	6		
7		SPARE	20 1		250		250	2 20	EXTERIOR POLE TOP LIGHTING	#10	8		
9		SPARE	30 2		250		250	1 20	SPARE		10		
11		SPARE	30 2					1 20	SPARE		12		
13	#10	WATER HEATER 1	30 2	2500	2500			1 20	SPARE		14		
15	#10	WATER HEATER 1	30 2	2500	2500			1 20	SPARE		16		
17	#10	WATER HEATER 2	30 2	2500	2500			1 20	SPARE		18		
19	#10	WATER HEATER 2	30 2	2500	2500			1 20	SPARE		20		
21		PREPARED SPACE	- 1					1 -	PREPARED SPACE		22		
23		PREPARED SPACE	- 1					1 -	PREPARED SPACE		24		
25		PREPARED SPACE	- 1					1 -	PREPARED SPACE		26		
27		PREPARED SPACE	- 1					1 -	PREPARED SPACE		28		
29		PREPARED SPACE	- 1					1 -	PREPARED SPACE		30		
31		PREPARED SPACE	- 1					1 -	PREPARED SPACE		32		
33		PREPARED SPACE	- 1					1 -	PREPARED SPACE		34		
35		PREPARED SPACE	- 1					1 -	PREPARED SPACE		36		
37	350 KCM	FEEEDER TO CAMPER SITES	200 2	24000	24000			1 -	PREPARED SPACE		38		
39	350 KCM	FEEEDER TO CAMPER SITES	200 2	24000	24000		24000	2 200	FEEEDER TO CAMPER SITES 350 KCM		40		
41	350 KCM	FEEEDER TO CAMPER SITES	200 2	24000	24000		24000	2 200	FEEEDER TO CAMPER SITES 350 KCM		42		
SOLID NEUTRAL NEUTRAL WIRE (N)				TOTAL CONNECTED LOAD (VA) = 157,940				GROUND BUS GROUND WIRE (G)					
				AD = 79,160		GP = 78,780							

PANEL SCHEDULE													
PANEL:		PP4 ELECTRICAL ROOM			INTERRUPTING RATING = 24 KAIC		VOLTAGE: ENCLASURE:		240/120V, 400A, 1Ø, 3W WITH MAIN BREAKER SURFACE MOUNTED IV EQUIPMENT GND BAR SQUARE-D, I-LINE PANELBOARD				
CKT NO	THHN WIRE SIZE	LOAD DESCRIPTION	BREAKER AMP POLE	LOAD (VA)	AD		LOAD (VA)	BREAKER POLE AMP	LOAD DESCRIPTION	THHN WIRE SIZE	CKT NO	GROUND BUS	
					AD	GP						GROUND WIRE (G)	GROUND WIRE (G)
1	#12	RECEPTACLES, BATH ROOM	20 1	540	540		550	1 20	BATH ROOM 1, EXHAUST FANS AND LIGHTS	#12	2		
3	#12	RECEPTACLE, WATER FOUNTAIN	20 1	1000	540		550	1 20	BATH ROOM 2, EXHAUST FANS AND LIGHTS	#12	4		
5	#12	RECEPTACLES, BATH ROOM	20 1	540	540		300	1 20	LIGHTS, CORRIDOR AND PORCH	#12	6		
7		SPARE	20 1		250		250	2 20	EXTERIOR POLE TOP LIGHTING	#10	8		
9		SPARE	30 2		250		250	1 20	SPARE		10		
11		SPARE	30 2					1 20	SPARE		12		
13	#10	WATER HEATER 1	30 2	2500	2500			1 20	SPARE		14		
15	#10	WATER HEATER 1	30 2	2500	2500			1 20	SPARE		16		
17	#10	WATER HEATER 2	30 2	2500	2500			1 -	PREPARED SPACE		18		
19	#10	WATER HEATER 2	30 2	2500	2500			1 -	PREPARED SPACE		20		
21	#6	WATER WELL 1	60 2	3300	3300			1 -	PREPARED SPACE		22		
23		PREPARED SPACE	- 1		3300			1 -	PREPARED SPACE		24		
25		PREPARED SPACE	- 1					1 -	PREPARED SPACE		26		
27		PREPARED SPACE	- 1					1 -	PREPARED SPACE		28		
29		PREPARED SPACE	- 1					1 -	PREPARED SPACE		30		
31		PREPARED SPACE	- 1					1 -	PREPARED SPACE		32		
33		PREPARED SPACE	- 1					1 -	PREPARED SPACE		34		
35		PREPARED SPACE	- 1					1 -	PREPARED SPACE		36		
37	350 KCM	FEEEDER TO CAMPER SITES	200 2	24000	24000			1 -	PREPARED SPACE		38		
39	350 KCM	FEEEDER TO CAMPER SITES	200 2	24000	24000		14200	2 200	FEEEDER TO CAMPER SITES 350 KCM		40		
41	350 KCM	FEEEDER TO CAMPER SITES	200 2	24000	24000		14200	2 200	FEEEDER TO CAMPER SITES 350 KCM		42		
SOLID NEUTRAL NEUTRAL WIRE (N)				TOTAL CONNECTED LOAD (VA) = 154,940				GROUND BUS GROUND WIRE (G)					
				AD = 77,660		GP = 77,280							

PANEL SCHEDULE													
PANEL:		PP5 ELECTRICAL ROOM			INTERRUPTING RATING = 24 KAIC		VOLTAGE: ENCLASURE:		240/120V, 400A, 1Ø, 3W WITH MAIN BREAKER SURFACE MOUNTED IV EQUIPMENT GND BAR SQUARE-D, I-LINE PANELBOARD				
CKT NO	THHN WIRE SIZE	LOAD DESCRIPTION	BREAKER AMP POLE	LOAD (VA)	AD		LOAD (VA)	BREAKER POLE AMP	LOAD DESCRIPTION	THHN WIRE SIZE	CKT NO	GROUND BUS	
					AD	GP						GROUND WIRE (G)	GROUND WIRE (G)
1	#12	RECEPTACLES, BATH ROOM	20 1	540	540		550	1 20	BATH ROOM 1, EXHAUST FANS AND LIGHTS	#12	2		
3	#12	RECEPTACLE, WATER FOUNTAIN	20 1	1000	540		550	1 20	BATH ROOM 2, EXHAUST FANS AND LIGHTS	#12	4		
5	#12	RECEPTACLES, BATH ROOM	20 1	540	540		300	1 20	LIGHTS, CORRIDOR AND PORCH	#12	6		
7		SPARE	20 1		250		250	2 20	EXTERIOR POLE TOP LIGHTING	#10	8		
9		SPARE	30 2		250		250	1 20	SPARE		10		
11		SPARE	30 2					1 20	SPARE		12		
13	#10	WATER HEATER 1	30 2	2500	2500			1 20	SPARE		14		
15	#10	WATER HEATER 1	30 2	2500	2500			1 20	SPARE		16		
17	#10	WATER HEATER 2	30 2	2500	2500			1 -	PREPARED SPACE		18		
19	#10	WATER HEATER 2	30 2	2500	2500			1 -	PREPARED SPACE		20		
21	#6	LIFT STATION 2 X 2 HP	50 2	3300	3300			1 -	PREPARED SPACE		22		
23		PREPARED SPACE	- 1		3300			1 -	PREPARED SPACE		24		
25		PREPARED SPACE	- 1					1 -	PREPARED SPACE		26		
27		PREPARED SPACE	- 1					1 -	PREPARED SPACE		28		
29		PREPARED SPACE	- 1					1 -	PREPARED SPACE		30		
31		PREPARED SPACE	- 1					1 -					