

21 SWITCH DETAIL
SCALE: N.T.S.

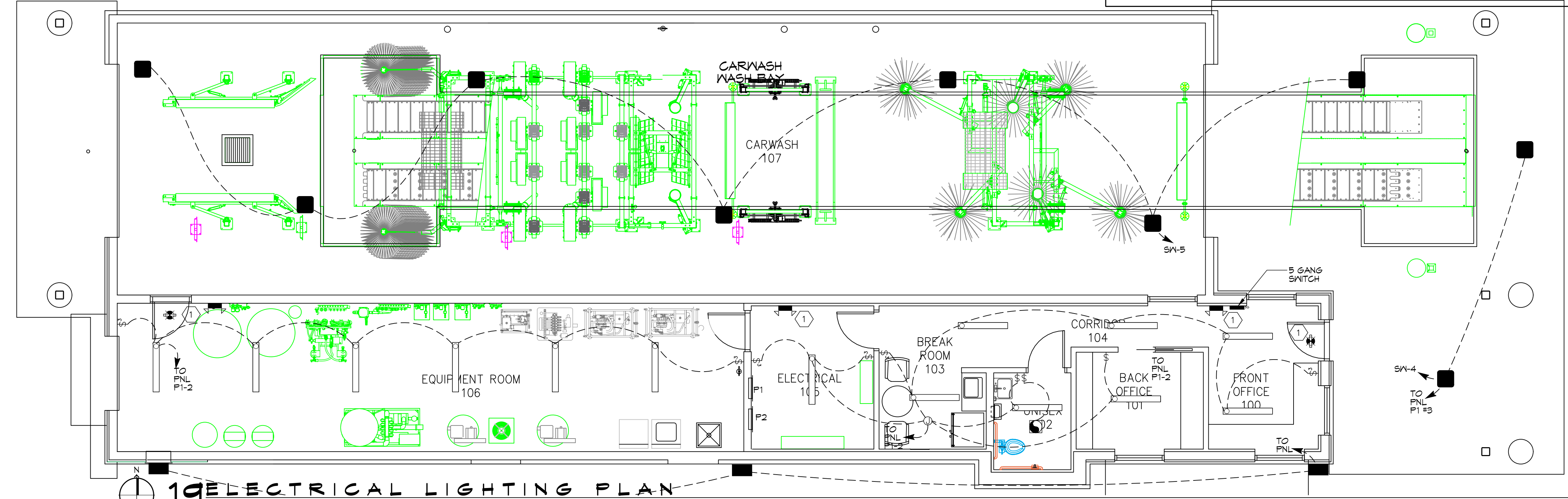
POWER LEGEND	
SYMB	DESCRIPTION
	STANDARD 120V DUPLEX RECEPTACLE, NEMA 5-2 OR 15\"/>
	WEATHER-PROOF GFCI DUPLEX RECEPTACLE MOUNTED AT 30\"/>
	JUNCTION BOX
	POWER DISCONNECT
	EXHAUST FAN/LIGHT COMBO - SEE MECH.
	TELEPHONE
	CIRCUIT PANEL
	CIRCUIT HOME RUN

NOTE:
1. SEE EQUIPMENT SUPPLIER'S DRAWINGS FOR EQUIPMENT'S ELECTRICAL, CONDUIT, AND WIRING REQUIREMENTS PRIOR TO COMMENCING ANY WORK.

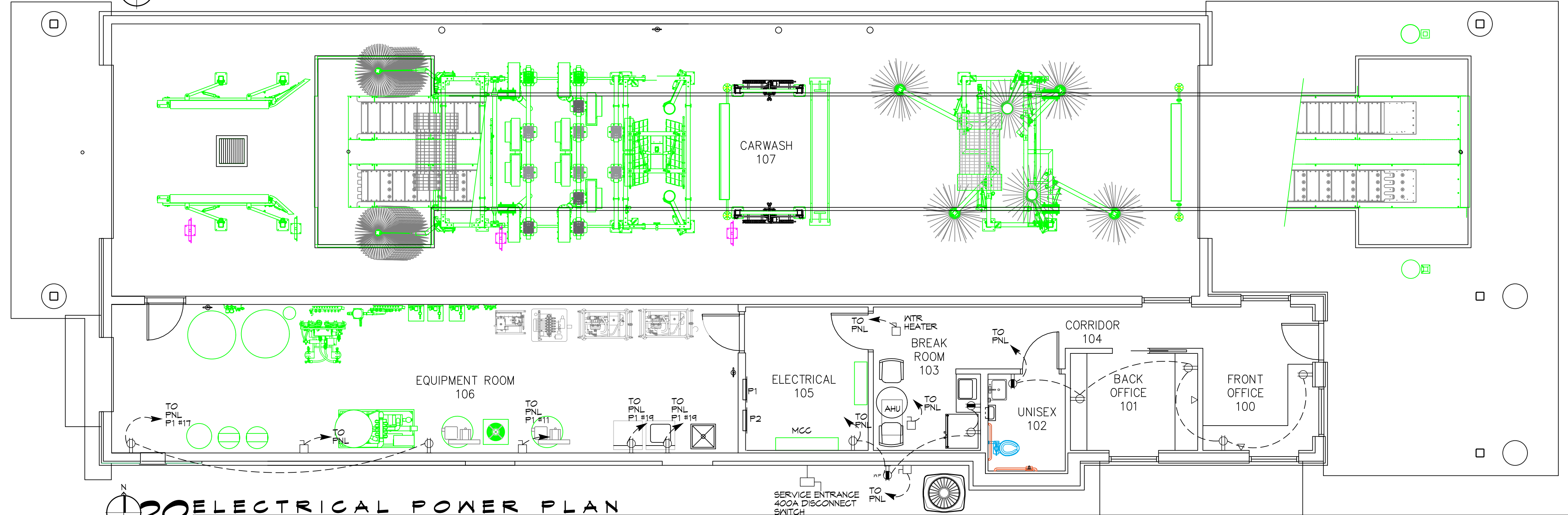
LIGHTING LEGEND	
	EMERGENCY LIGHT FIXTURE (120w)
	EXIT LIGHT FIXTURE - WALL MOUNTED (10w)
	EXIT LIGHT FIXTURE - CEILING MOUNTED (10w)
	LED WALL MOUNTED LIGHT FIXTURE WITH 90 MIN. BACK-UP (15w)
	2X2 FLUORESCENT LIGHT FIXTURE (100w) 120V 10
	SCOTTSDALE SC320 PSMV PULSE-START METAL HALIDE (320w) 120V 10
	EXTERIOR WATERPROOF WALL MOUNTED H.P. METAL HALIDE FLOOD LIGHT (175w)
	1X8' CEILING MOUNTED FLUORESCENT LIGHT STRIP FIXTURE (2 BULB 120w TOTAL) 120V 10
	ELECTRIC PANEL BOARD
	CIRCUIT HOME RUN
	LIGHT SWITCH 120V COMMERCIAL GRADE
	LIGHT SWITCH - 3-WAY 120V COMMERCIAL GRADE
	EXHAUST FAN/LIGHT COMBO UNIT (25w), SEE MECHANICAL
	5 GANG SWITCH

NOTE:
1. CONNECT ALL EMERGENCY/EXIT LIGHT FIXTURES TO NEAREST CONSTANT POWER SOURCE.

- ### ELECTRICAL NOTES
- ALL WORK SHALL CONFORM TO THE LATEST EDITION OF THE NATIONAL ELECTRICAL CODE, THE GOVERNING ELECTRICAL CODE, AND ALL OTHER INSPECTION DEPARTMENTS HAVING JURISDICTION. OBTAIN CERTIFICATES OR APPROVAL WHERE REQUIRED.
 - ALL MATERIALS FURNISHED SHALL BE NEW AND SHALL BE U. L. LISTED.
 - THE DRAWINGS INDICATE SIZE AND GENERAL LOCATION OF WORK. SCALED DIMENSIONS SHALL NOT BE USED. THE EXACT LOCATION OF ALL LIGHTING FIXTURES, RECEPTACLES, AND TELEPHONE OUTLETS, ETC., SHALL BE DETERMINED BY ACTUAL CONDITIONS IN THE FIELD.
 - PRIOR TO BIDDING, CONTRACTOR SHALL VISIT THE JOB SITE AND FAMILIARIZE THEMSELVES WITH THE EXISTING CONDITIONS.
 - ELECTRICAL CONTRACTOR SHALL COORDINATE HIS WORK WITH OTHER TRADES AND WITH OTHER CONTRACTORS WHOSE WORK MAY AFFECT HIS INSTALLATION.
 - ELECTRICAL CONTRACTOR SHALL COORDINATE INCOMING ELECTRICAL SERVICE WITH UTILITY COMPANY AND INCLUDE IN HIS BID ALL CHARGES AND FEES INCURRED IN MODIFICATIONS.
 - WHERE MORE THAN ONE SWITCH OCCURS IN THE SAME LOCATION, THEY SHALL BE INSTALLED IN A GANG TYPE BOX UNDER ONE COVER PLATE.
 - ELECTRICAL CONTRACTOR, BEFORE INSTALLING ANY WORK, SHALL SEE THAT IT DOES NOT INTERFERE WITH CLEARANCES REQUIRED FOR FINISHED COLUMNS, HUNG CEILINGS, PLASTER, PARTITIONS, WALLS, ETC., AS SHOWN IN THE ARCHITECTURAL DRAWINGS AND DETAILS. IF ANY WORK IS INSTALLED AND IT LATER DEVELOPS THAT SUCH DETAILS OR DESIGNS CAN NOT BE FOLLOWED, THE CONTRACTOR, AT HIS OWN EXPENSE SHALL MAKE SUCH CHANGES IN THE WORK AS DIRECTED BY THE ARCHITECT SO TO PERMIT THE INSTALLATION OF THE ARCHITECTURAL WORK AS SHOWN ON THE PLANS AND DETAILS.
 - PERFORM ANY TESTS REQUIRED BY THE OWNER OR ENGINEER IN CONNECTION WITH THE OPERATION OF THE ELECTRICAL SYSTEM OF THE BUILDING.
 - ALL TESTS SHALL BE MADE IN ACCORDANCE WITH THE LATEST STANDARD OF THE IEEE AND THE NATIONAL ELECTRICAL CODE.
 - MINIMUM CONDUCTOR SIZE SHALL BE #12, 600V INSULATION. MINIMUM SIZE CONDUIT SHALL BE 3/4\"/>



19 ELECTRICAL LIGHTING PLAN
SCALE: 3/16"=1'-0"



20 ELECTRICAL POWER PLAN
SCALE: 3/16"=1'-0"

DAMMON ENGINEERING, INC.
LOUISIANA & MISSISSIPPI
Chief Engineer: Brian Mistich, PE
554 Old Spanish Trail
Shreveport, LA 70458
www.dammonengineering.com
info@dammonengineering.com
PH: 985.649.9832

REVISIONS	DATE
# DESCRIPTION	



A NEW CARWASH FOR
CHEEKY MONKEY CARWASH

SHEET TITLE:
BUILDING ELECTRICAL PLANS

DRAWING NUMBER:
E102

SHEET No. 4 of 10

WEST FRONTAGE DRIVE
ARLINGTON, MISSISSIPPI 39817
JOB No.: 2024 DATE: 09-22-2024
DRAWN BY: CSD CHECKED BY: BAM