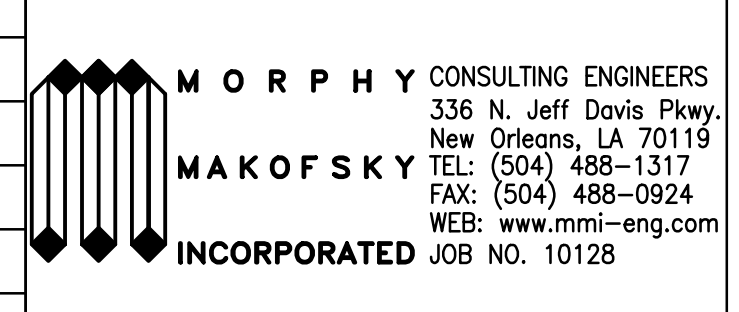


- PLAN NOTES: UNLESS NOTED OTHERWISE:
- TOP OF SLAB EL. 36'-0".
 - EXISTING CONCRETE WATTLE JOIST FLOOR SYSTEM. (14"x3" CONCRETE SLAB+17" TOTAL THICKNESS).
 - (E) - INDICATES EXISTING CONSTRUCTION.
 - (N) - INDICATES NEW CONSTRUCTION.
 - INDICATES FLOOR SYSTEM TO CONSIST OF LIGHT WEIGHT CONCRETE (115PCF, $f_c=4,000$ PSI) ON 1/2" DEEP 20 GAGE GALVANIZED COMPOSITE METAL DECKING. TOTAL THICKNESS=6".
 - INDICATES NEW N-FALL SLAB TO CONSIST OF 3" THICK CONCRETE NEW N-FALL SLAB TO CONSIST OF 3" THICK CONCRETE NEW THROUGHOUT ($f_c=4,000$ PSI, NORMAL WEIGHT), TOP OF SLAB EL. TO MATCH EXISTING, COORD. WITH EXIST. FINISHES.
 - INDICATES NEW SLAB EXTENSION TO CONSIST OF 6" THICK CONCRETE SLAB THROUGHOUT ($f_c=4,000$ PSI, NORMAL WEIGHT), TOP OF SLAB EL. TO MATCH EXISTING, COORD. WITH EXIST. FINISHES.
 - INDICATES FLOOR SYSTEM TO CONSIST OF LIGHT WEIGHT CONCRETE (115PCF, $f_c=4,000$ PSI) ON 1/2" DEEP 20 GAGE GALVANIZED COMPOSITE METAL DECKING. TOTAL THICKNESS=6".
 - INDICATES NEW EXISTING TYPING SLAB AT EXISTING DEPRESSION.
 - INDICATES ROOF SYSTEM TO CONSIST OF 1/2" DEEP TYPE "20" 20 GAGE GALVANIZED METAL ROOF DECKING. SEE ARCHITECTURAL DRAWINGS FOR INSULATION & ROOF ON TOP OF DECKING.
 - INDICATES DIRECTION OF SPAN OF STEEL DECKING.
 - (X) - INDICATES X-BRACING. SEE 2/52-7.
 - (K) - INDICATES K-BRACING. SEE 3/52-7.

1 400 LEVEL FRAMING PLAN
1/8"=1'-0"

PRELIMINARY
NOT FOR CONSTRUCTION

No.	Date	Issue	No.	Date	Issue
1	12.23.10	SD PRICING SET			
2	01.18.11	100% SD SET			
3	05.18.11	LNO Meeting			
4	09.15.11	100% DD/ PRICING			



Holabird & Root / Holly & Smith LLC expressly disclaims any responsibility arising from any unauthorized use of these plans, drawings and notes. Any authorization must be in writing.
This drawing copy may have been reproduced at a size different than originally drawn. The Owner and Architect assume no responsibility for use of incorrect scale. Drawings are not to be scaled.
Not published - All rights reserved.

HOLABIRD & ROOT
140 South Dearborn Avenue
Suite 500
Chicago, IL 60660
312.357.1771 (tel)
312.357.1909 (fax)
www.holabird.com

HOLLY & SMITH LLC
541 Julia Street
Suite 201
New Orleans, LA 70130
504.585.1315 (tel)
504.585.1316 (fax)
www.hollyandsmith.com

Project Number	15248.00
Drawn	RAB
Checked	JAS
Proj. Arch./Eng.	JAS

LOYOLA UNIVERSITY NEW ORLEANS
Monroe Hall Renovation

400 LEVEL FRAMING PLAN
Sheet Name
Drawing No. **S2-4**