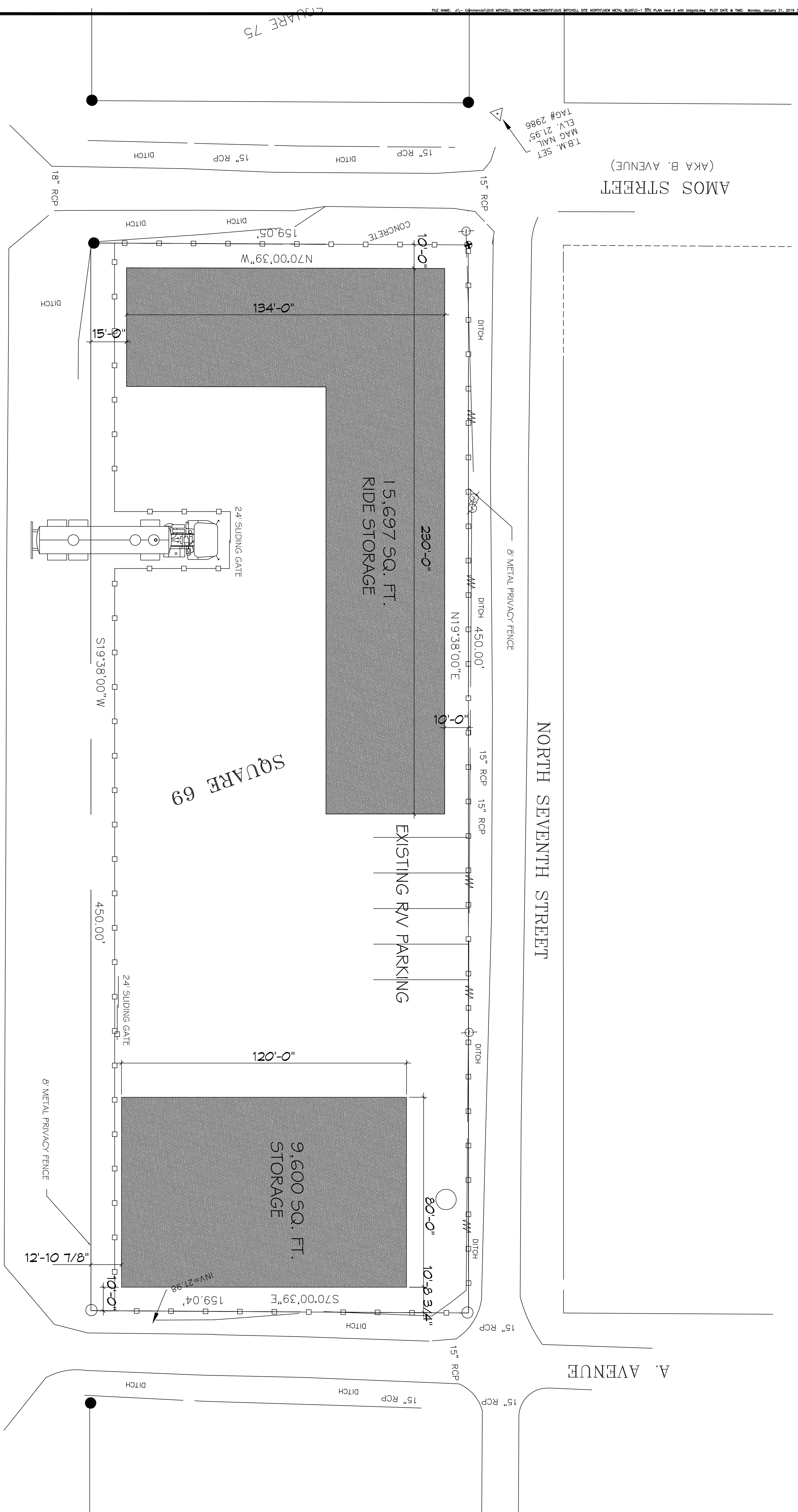


1 SITE PLAN  
SCALE: 1" = 20'-0"



U.S. HIGHWAY 11  
(A.K.A. SIXTH STREET)

**DAMMON**  
ENGINEERING, INC.  
LOUISIANA & MISSISSIPPI

Chief Engineer: Brian Mistic, PE  
554 Old Spanish Trail  
Stidell, LA 70458

www.dammonengineering.com  
info@dammonengineering.com  
PH: 985.649.5832

REVISIONS		DATE
#	DESCRIPTION	
1		

**SITE LAYOUT**  
**GUS MITCHELL BROTHERS AMUSEMENTS**

ALTON LA.

JOB No: 2341 DATE: 09-18-2018

DRAWN BY: CKD CHECKED BY: BAM

The above drawings and specifications, designs and arrangements represent the property of Dammon Engineering, Inc. and shall remain the property of Dammon Engineering, Inc. and no part thereof shall be copied, reproduced, or used in connection with any work or project other than that for which they were prepared and developed without written consent of Dammon Engineering, Inc. Any use of these drawings or specifications shall constitute a violation of the terms and conditions of the contract.

SHEET No. 1 OF 1

DRAWING NUMBER: **C101**