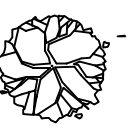
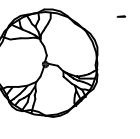


P.L. No. 11-10-19, COMMERCIAL LOT 11, PARCELS 11-10-19-01, 11-10-19-02, 11-10-19-03, 11-10-19-04, 11-10-19-05, 11-10-19-06, 11-10-19-07, 11-10-19-08, 11-10-19-09, 11-10-19-10, 11-10-19-11, 11-10-19-12, 11-10-19-13, 11-10-19-14, 11-10-19-15, 11-10-19-16, 11-10-19-17, 11-10-19-18, 11-10-19-19, 11-10-19-20, 11-10-19-21, 11-10-19-22, 11-10-19-23, 11-10-19-24, 11-10-19-25, 11-10-19-26, 11-10-19-27, 11-10-19-28, 11-10-19-29, 11-10-19-30, 11-10-19-31, 11-10-19-32, 11-10-19-33, 11-10-19-34, 11-10-19-35, 11-10-19-36, 11-10-19-37, 11-10-19-38, 11-10-19-39, 11-10-19-40, 11-10-19-41, 11-10-19-42, 11-10-19-43, 11-10-19-44, 11-10-19-45, 11-10-19-46, 11-10-19-47, 11-10-19-48, 11-10-19-49, 11-10-19-50, 11-10-19-51, 11-10-19-52, 11-10-19-53, 11-10-19-54, 11-10-19-55, 11-10-19-56, 11-10-19-57, 11-10-19-58, 11-10-19-59, 11-10-19-60, 11-10-19-61, 11-10-19-62, 11-10-19-63, 11-10-19-64, 11-10-19-65, 11-10-19-66, 11-10-19-67, 11-10-19-68, 11-10-19-69, 11-10-19-70, 11-10-19-71, 11-10-19-72, 11-10-19-73, 11-10-19-74, 11-10-19-75, 11-10-19-76, 11-10-19-77, 11-10-19-78, 11-10-19-79, 11-10-19-80, 11-10-19-81, 11-10-19-82, 11-10-19-83, 11-10-19-84, 11-10-19-85, 11-10-19-86, 11-10-19-87, 11-10-19-88, 11-10-19-89, 11-10-19-90, 11-10-19-91, 11-10-19-92, 11-10-19-93, 11-10-19-94, 11-10-19-95, 11-10-19-96, 11-10-19-97, 11-10-19-98, 11-10-19-99, 11-10-19-100.

LANDSCAPING LEGEND	
	(17) POND CYPRESS ALL CLASS "A" TREES, AT THE TIME OF PLANTING, SHALL HAVE A MINIMUM CALIPER OF AT LEAST 2" TO 2 1/2", MEASURED SIX (6") INCHES ABOVE THE ROOT BALL, AND A MINIMUM HEIGHT OF 10-12 FEET.
	(14) LITTLE GEM MAGNOLIAS ALL CLASS "B" TREES AND ALL TREES, OTHER THAN CLASS "A" TREES, AT THE TIME OF PLANTING, SHALL HAVE A MINIMUM CALIPER OF AT LEAST ONE AND ONE HALF (1-1/2) INCHES MEASURED (6") SIX INCHES ABOVE THE ROOT BALL AND A MINIMUM HEIGHT OF 8 TO 10 FEET.

DAMMON

ENGINEERING, INC.

LOUISIANA & MISSISSIPPI

Chief Engineer: Brian Nersich, PE  
 554 Old Spanish Trail  
 Slidell, LA 70458  
 www.dammonengineering.com  
 info@dammonengineering.com  
 PH: 985.649.8832

#	DESCRIPTION	DATE
1		

SEAL:

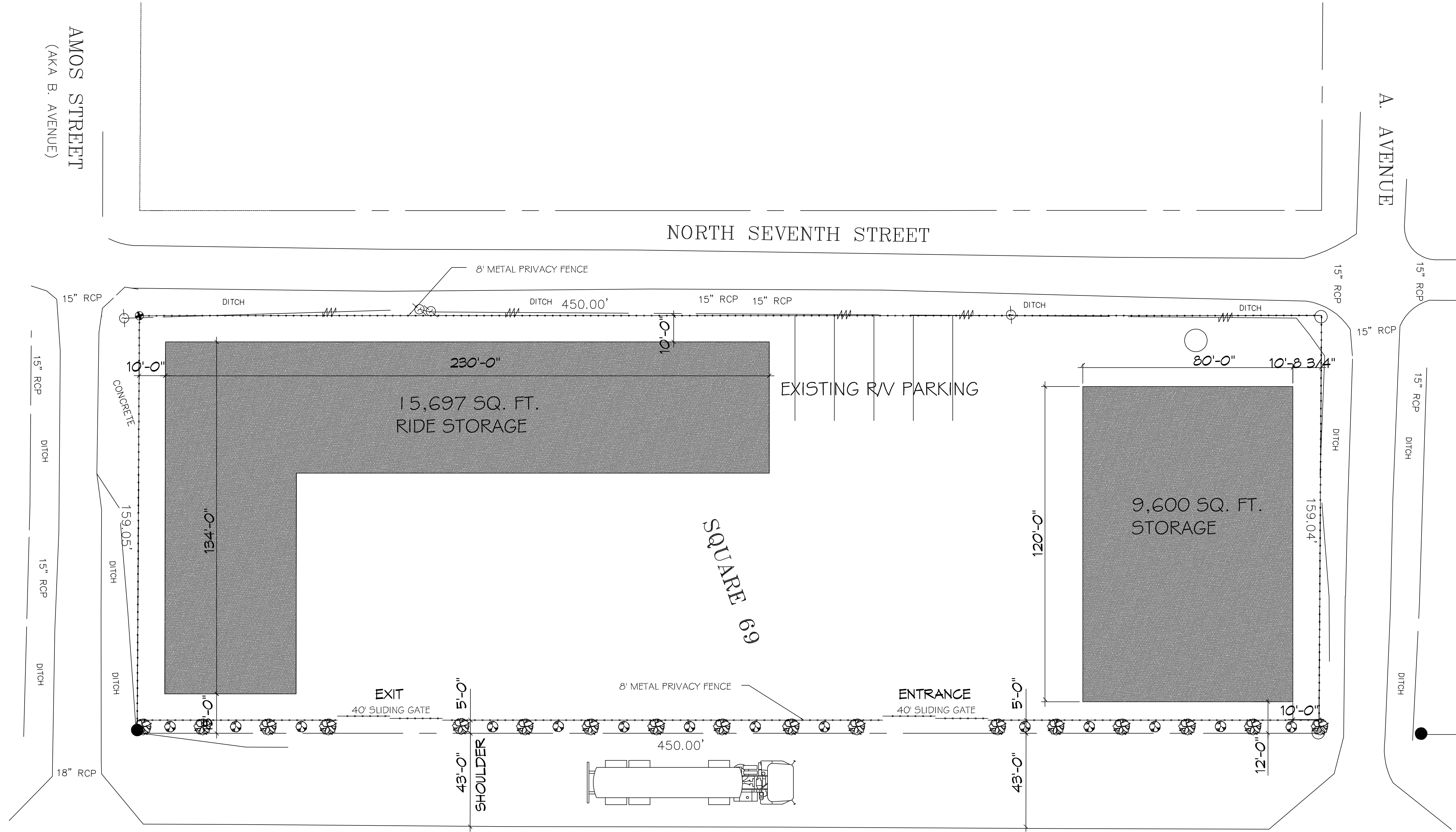
This drawing is prepared by the engineer and is subject to the provisions of the Professional Engineering Act of 1967, as amended, and the rules and regulations of the Board of Professional Engineering Examiners of the State of Louisiana. The engineer shall be held responsible for the accuracy of the information and data furnished to him and for the correctness of the design and calculations shown hereon. The engineer shall not be held responsible for the accuracy of the information and data furnished to him by others.

JOB No.: 2541 | DATE: 01-21-2019  
 DRAWN BY: CSD | CHECKED BY: BAM  
 ALTON, LA

SHEET TITLE:  
SITE PLAN

DRAWING NUMBER:  
**C101**

1 of 1



 **1 SITE PLAN**  
SCALE: 1" = 20'-0"

U.S. HIGHWAY 11  
(A.K.A. SIXTH STREET)