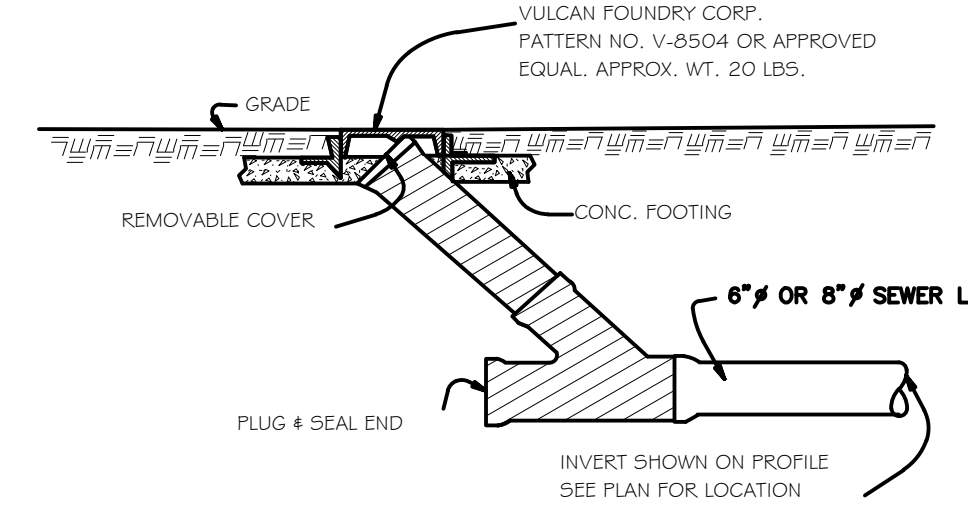


NOTE: A MINIMUM 10' HORZ. AND 18" VERT. SEPARATION (WITH WATER MAIN ON TOP) IS REQUIRED BETWEEN WATER AND SEWER LINES.

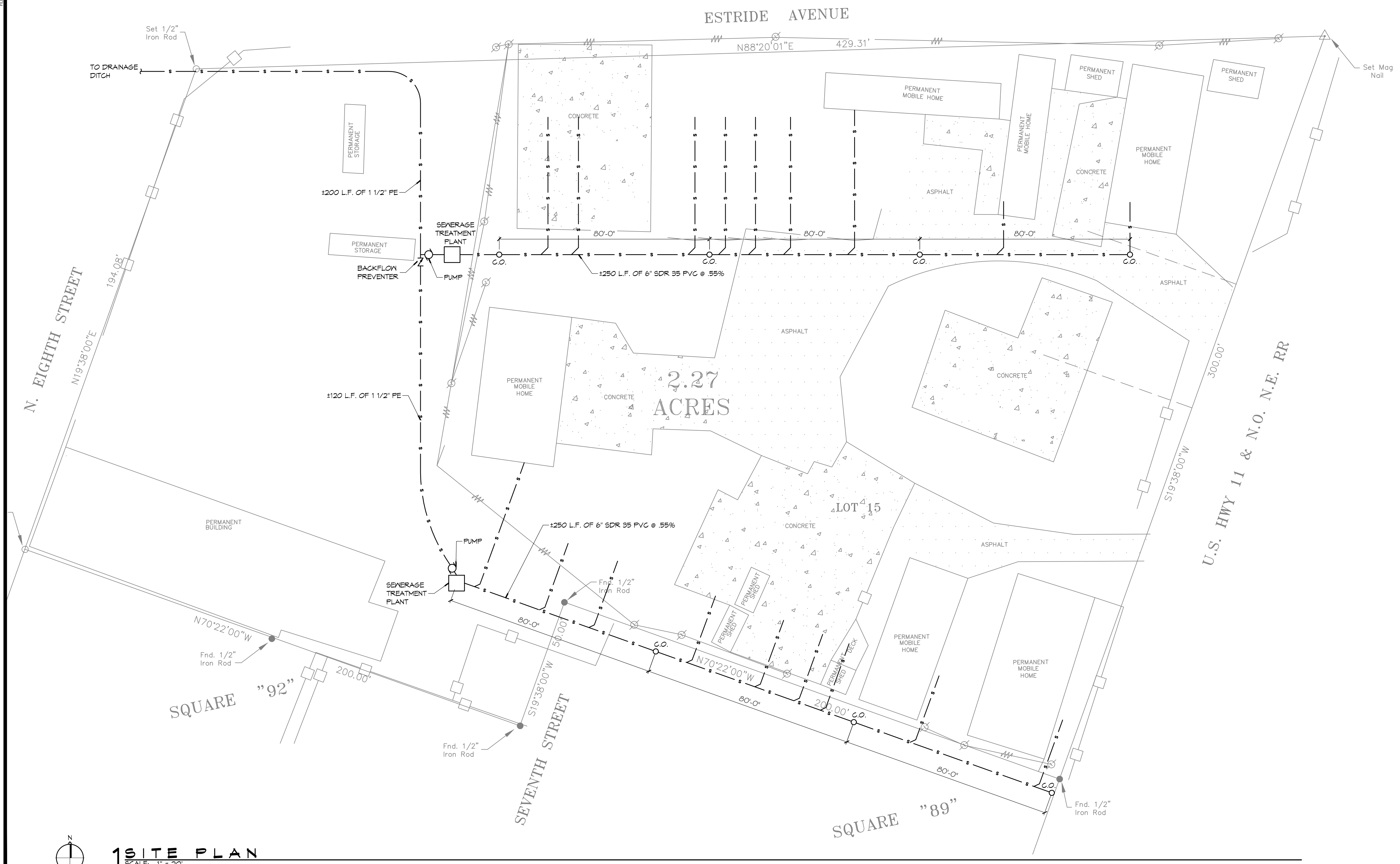
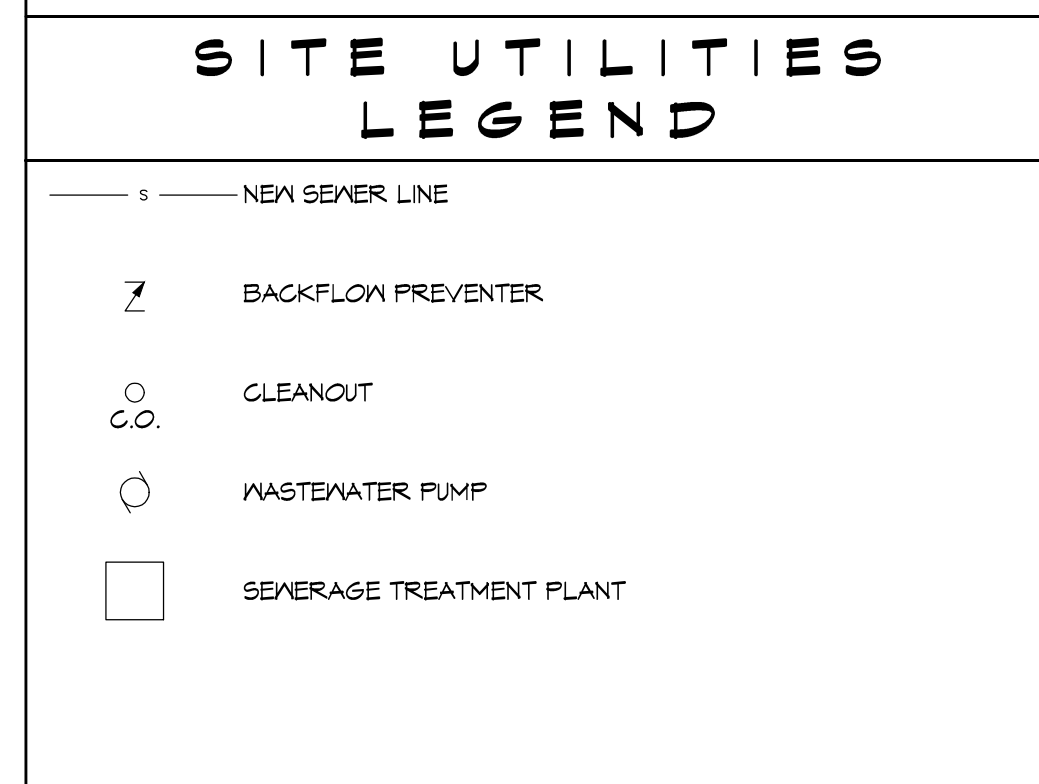
SEWER PIPE MAIN BEDDING DETAIL
SCALE: N.T.S.



CLEANOUT DETAIL
SCALE: N.T.S.

- ### SITE UTILITIES NOTES
1. MINIMUM PIPE BURIAL TO BE 36 INCHES.
 2. 6" CLEANOUTS EVERY 80 FEET, STARTING FROM HIGHEST END.
 3. WATER AND SEWER MAINS SHALL BE SEPARATED BY A MINIMUM OF 6' WHEN RUNNING PARALLEL AND 18' WHEN CROSSING PERPENDICULAR (WITH THE WATER ABOVE THE SEWER).
 4. SEWER LINES SHALL BE MAINTAINED A MINIMUM OF 50' DISTANCE FROM ANY WATER WELL.
 5. 6" COLLECTION SHALL BE LAID AT A 55% SLOPE.
 6. 6" CLEANOUTS SHALL BE INSTALLED ON THE 6" COLLECTION LINE EVERY 80 LINEAR FEET.
 7. 6" GRAVITY MAINS AND 4" SERVICE LATERALS SHALL BE PVC (POLY VINYL CHLORIDE) SEWER PIPE AND SHALL COMPLY WITH ASTM D3034 OR UNI-B-4. THE PIPE SHALL BE WITH A STANDARD DIMENSION RATIO (SDR) OF 35 (SDR 35). PIPE AND FITTINGS SHALL HAVE AN INTEGRATED BELL WITH ELASTOMERIC SEAL JOINTS. THE JOINTS SHALL COMPLY WITH ASTM D3212 OR UNI-B-1. GASKETS SHALL COMPLY WITH ASTM F477. JOINT LUBRICANTS SHALL BE AS RECOMMENDED BY THE PIPE MANUFACTURER.
 8. PVC FITTINGS SHALL MANUFACTURED BY THE SAME COMPANY THAT MANUFACTURED THE PIPE TO WHICH IT IS TO BE ATTACHED.
 9. ALL PIPE FITTINGS, CLEANOUTS AND RELATED APPURTENANCES SHALL BE INSTALLED TRUE TO LINES, GRADES AND LOCATION AS SHOWN ON THE DRAWINGS.
 10. ALL MATERIALS SHALL BE INSTALLED IN STRICT CONFORMANCE WITH THE MANUFACTURER'S RECOMMENDATIONS.
 11. ALL PIPE SHALL BE INSTALLED WITH THE BELL END FACING UPSTREAM.
 12. INTERIOR AND ENDS OF ALL SEWER PIPES SHALL BE THOROUGHLY CLEANED OF ALL FOREIGN MATTER BEFORE JOINING WITH THE NEXT SECTION OF THE FITTING.
 13. CONTRACTOR SHALL PAY FOR ALL SEWER SYSTEM TESTING INCLUDING INVERT AND SLOPE VERIFICATION, LAMPING, MANDRELL, PULLING OR ANY ADDITIONAL TESTING AS MAY BE REQUIRED TO INSURE SYSTEM CONFORMANCE.

- ### GENERAL NOTES
1. CONTRACTOR IS TO VERIFY ALL EXISTING UTILITY LOCATIONS, ELEVATIONS AND SIZES PRIOR TO COMMENCING ANY WORK. CONTRACTOR SHALL PAY NECESSARY FEES FOR THE UTILITIES CONNECTIONS.
 2. CONTRACTOR IS RESPONSIBLE TO SET NEW INVERTS OF SEWERAGE PIPES.
 3. 4-INCH SEWER LINES SHALL BE SLOPED 1/8" PER FOOT.
 4. ALL PLUMBING SHALL BE CLOSELY COORDINATED WITH WATER SYSTEM.
 5. ALL SEWER LINES SHOWN ARE DIAGRAMMATIC.
 6. MINIMUM PIPE MAIN BURIAL SHALL BE 3'-0".
 7. OWNER SHALL IDENTIFY TRAILER SPACING FOR CONTRACTOR TO LAYOUT SEWER WORK.



1 SITE PLAN
SCALE: 1" = 20'

DAMMON ENGINEERING, INC.
LOUISIANA & MISSISSIPPI

Chief Engineer: Brian Mirtch, PE
554 Old Spanish Trail
Slidell, LA 70588
PH: 985.649.5832 F: 985.641.5950
www.dammonengineering.com
info@dammonengineering.com

REVISIONS	DATE

SEAL:

PRELIMINARY NOT FOR CONSTRUCTION

GUS MITCHELL SQUARE 89 & 92

ALTON ST. PARISH, LOUISIANA
DATE: FEBRUARY, 2016
CHECKED BY: CKD
DRAWN BY: M-M

SHEET TITLE:
SEWER LAYOUT

DRAWING NUMBER:
C-1

SHEET No: 00 of 1