

GENERAL NOTES (THIS SHEET ONLY):

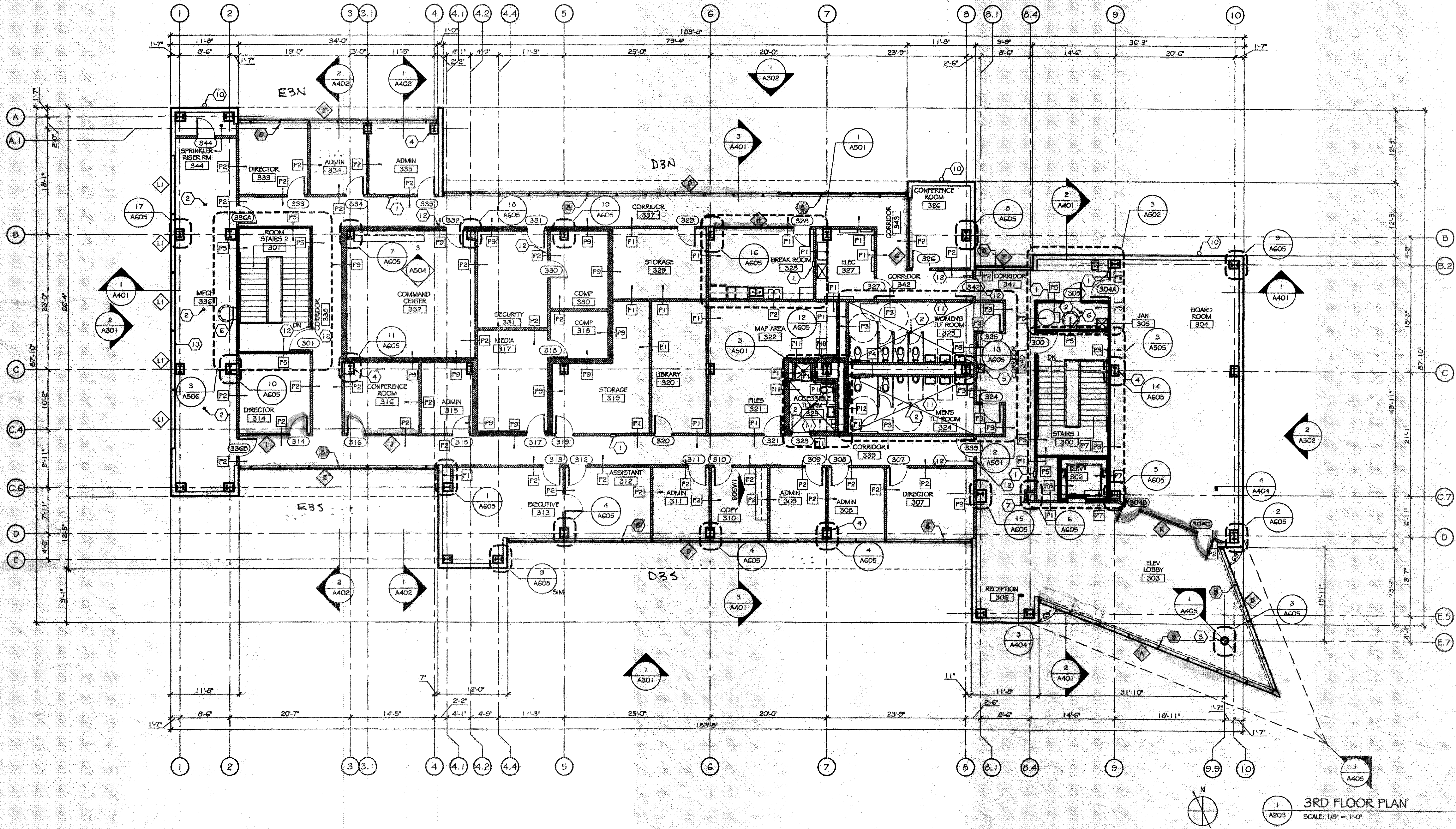
- FOR PARTITION TAGS SEE PARTITION TYPES SHEET A707
- FOR DOOR, WINDOW, AND LOUVER TAGS SEE OPENING SCHEDULE SHEET A702
- FOR ADDITIONAL DIMENSIONS SEE DIMENSION PLAN 1/A206
- ALL COLUMNS ARE SHOWN AT LOCATION WHERE THEY MEET THE SLAB
- ALL WALLS, WINDOWS, DOORS, AND STAIRS ARE SHOWN AS CUT 3" ABOVE THE SLAB

SPECIFIC NOTES (THIS SHEET ONLY):

- | | | | |
|---|---|----|---|
| 1 | FIRE EXTINGUISHER & CABINET | 8 | ALUMINUM CURTAIN WALL SYSTEM, 6" DEEP FRAME, TYPICAL |
| 2 | FLOOR DRAIN (RE: MECHANICAL DRAWINGS) | 9 | ALUMINUM CURTAIN WALL SYSTEM, 8" DEEP FRAME, TYPICAL |
| 3 | STRUCTURAL STEEL COLUMN (RE: STRUCTURAL DRAWINGS); ONE-HOUR FIRE-PROTECTED WITH INTUMESCENT PAINT; SHOWN AT SLAB LOCATION. PROVIDE 2 PIECE ALUMINUM (CLEAR ANODIZED) COLUMN COVER FROM FLOOR TO CEILING | 10 | 8" Ø METAL DOWNSPOUT, COLOR TO MATCH METAL PANELS |
| 4 | STRUCTURAL STEEL COLUMNS, TYPICAL (RE: STRUCTURAL DRAWINGS); ONE-HOUR FIRE-PROTECTED WITH GYPSUM BOARD TO 6" ABOVE CEILING THEN TRANSITIONED TO ONE-HOUR SPRAYED ON FIRE-PROOFING ABOVE CEILING | 11 | SLOPE CONCRETE SLAB 1/4" PER FOOT TO FLOOR DRAIN AT TOILET ROOMS (RE: STRUCTURAL DRAWINGS) |
| 5 | WATER COOLER (RE: PLUMBING DRAWINGS) | 12 | PROXIMITY CARD READERS (NIC). COORDINATE WITH OWNER VENDOR |
| 6 | LADDER AND LADDER CAGE TO ROOF ACCESS HATCH | 13 | PROVIDE RIGID INSULATION BOARD AT INTERIOR SIDE OF ALL LOUVERS NOT DUCTED TO MECHANICAL EQUIPMENT (RE: MECHANICAL DRAWINGS) |
| 7 | FURR-OUT TO MATCH COLUMN FURR-OUT ON OPPOSITE SIDE OF CORRIDOR | | |

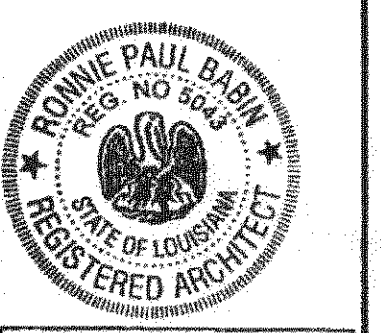
WALL HATCH LEGEND:

- EXTERIOR WALL
- INTERIOR WALL
- INTERIOR HARDENED WALL
- ONE HOUR FIRE-RATED WALL



3RD FLOOR PLAN
SCALE: 1/8" = 1'-0"

wink design group
 architecture.planning.interior.design.engineering
 1100 poydras street, suite 1960, new orleans, louisiana, 70163
 P. 504.754.6280 F. 504.754.5276
ADMINISTRATION AND SECURITY COMPLEX
ST. BERNARD PORT HARBOR & TERMINAL DISTRICT
 9000 WEST ST. BERNARD HWY, CHALMETTE, LA 70043



BID SET

project architect	BBB
interior design	BBB
checked by	BBB
Architect's Project Number	108008.00
03.10.00	architectural design
04.07.00	design development
08.08.00	for bid
	for construction
AUGUST 8, 2008	
A203	