

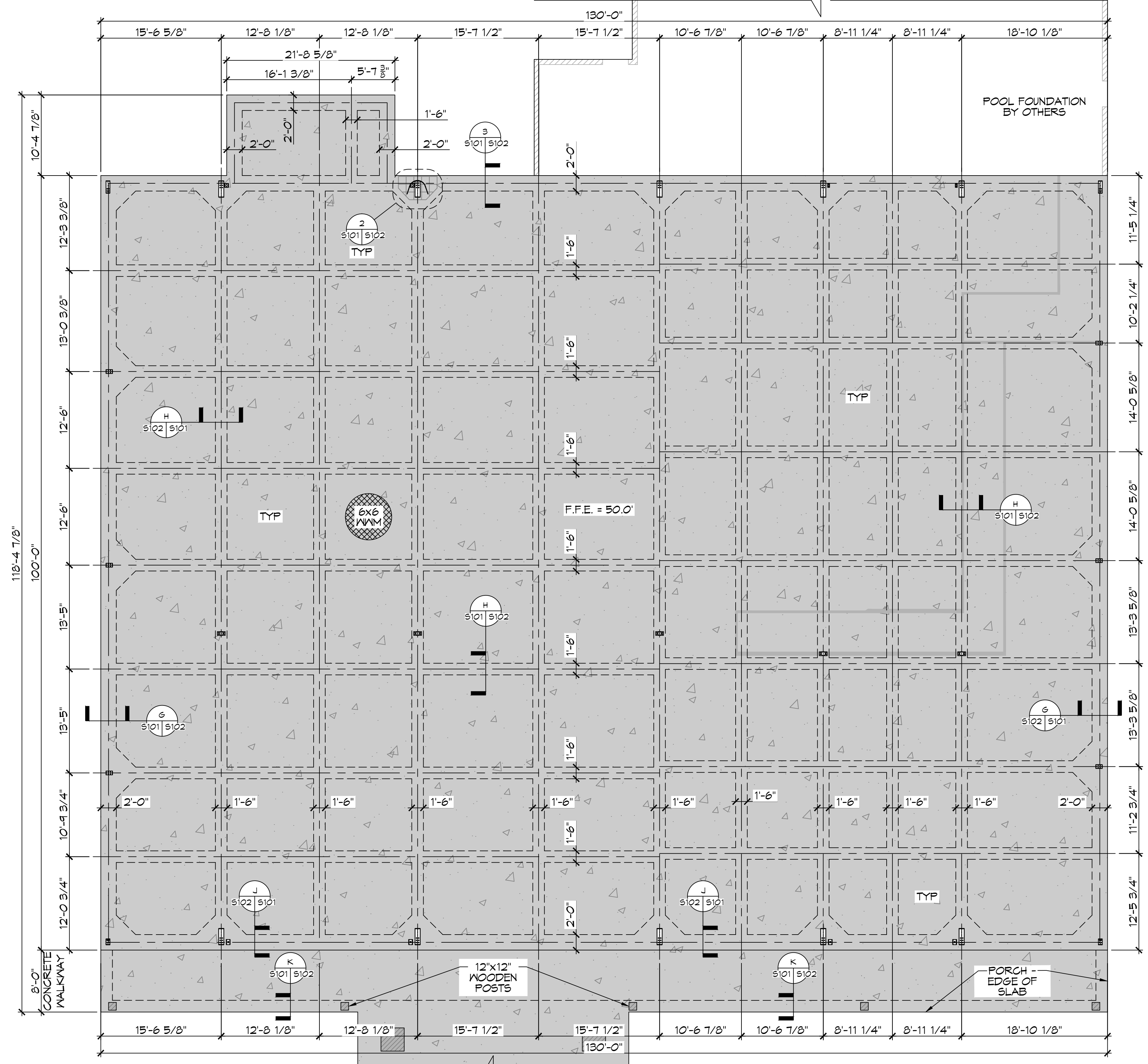
22 PORTE COCHERE FOUNDATION PLAN
SCALE: 1/8"=1'-0"

SITE NOTE

1. THE SITE AND FOUNDATION WAS DESIGNED BASED ON A GEOTECHNICAL REPORT GENERATED BY STRATUM ENGINEERING, LLC, OCTOBER 23, 2017. ALL SITE PREPARATION AND FOUNDATION CONSTRUCTION SHALL FOLLOW THE RECOMMENDATIONS IN THE GEOTECHNICAL REPORT.

REFERENCE NOTE

1. PRIOR TO CONSTRUCTION VERIFY WITH THE METAL BUILDING MANUFACTURER FOR COLUMN LOCATION.



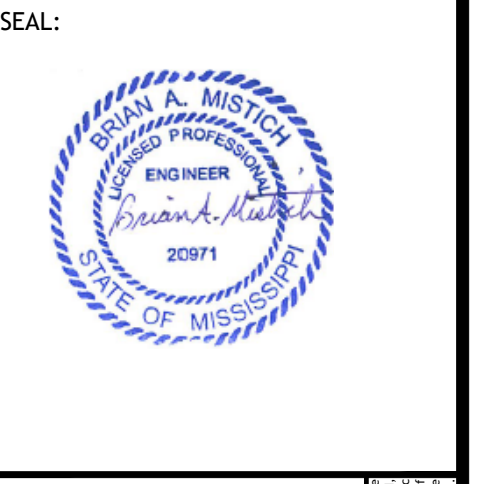
23 FOUNDATION PLAN
SCALE: 1/8"=1'-0"

DAMMON ENGINEERING, INC.
LOUISIANA & MISSISSIPPI

www.dammonengineering.com
info@dammon.com
504.686.5833
504.686.5832

Field Engineer: Brian Mistich, PE
504.686.5833
Sudair, LA 70488

#	DESCRIPTION	REVISIONS	DATE



**NEW ATHLETIC CLUB
PRESTIGE FITNESS
CLUB AND SPA**

4422 KALANI DRIVE
HANGCOCK COUNTY, MISSISSIPPI

JOB No: 02-22-2022
DATE: 02-22-2022

DRAWN BY: BAW
CHECKED BY: C&D

SHEET TITLE:
FOUNDATION PLAN

DRAWING NUMBER:

S101

SHEET No: 9 of 22