

These documents are the property of Bailey & Associates Architects LLC. Any duplication in whole or in part must be done with the written consent of Bailey & Associates Architects, LLC

© Bailey & Associates

PROFESSIONAL SEAL

PROJECT NUMBER
0149.11.07

DATE: August 05, 2008

DRAWN BY: R.E.B.

CHECKED BY:

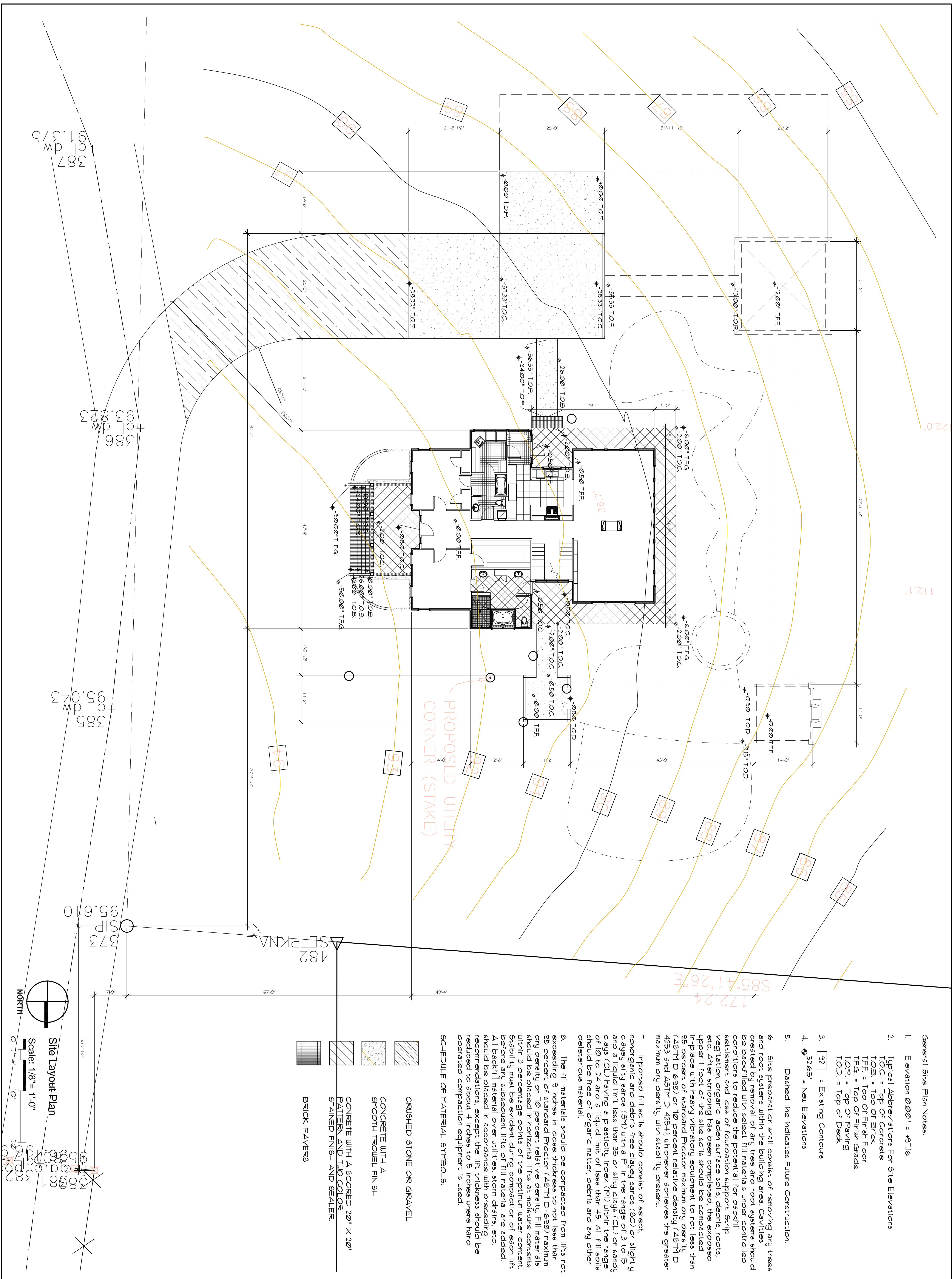
REVISIONS
No. Date By

SHEET

A-1

OF TOTAL SHEETS

PROGRESS DRAWINGS FOR PRICING ONLY



General Site Plan Notes:

- Elevation 0.00' = +571.6'
- Typical Abbreviations For Site Elevations
TOC = Top Of Concrete
TOB = Top Of Brick
TFG = Top Of Finish Floor
TFG = Top Of Finish Grade
TOP = Top Of Paving
TOD = Top Of Deck
- 92 = Existing Contours
- 32.65 = New Elevations
- Dashed line indicates Future Construction.
- Site preparation shall consist of removing any trees and root systems within the building area. Cavities created by removal of any tree and root systems should be backfilled with select fill materials under controlled conditions to reduce the potential for backfill settlement and loss of foundation support. Strip vegetation, organic laden surface soils, debris, roots, etc. After stripping has been completed, the exposed upper 1 foot of the site soils should be compacted in-place with heavy vibratory equipment to not less than 95 percent of standard Proctor maximum dry density (ASTM D 698) or 10 percent relative density (ASTM D 4253 and ASTM D 4254) whichever achieves the greater maximum dry density, with stability present.
- Imported fill soils should consist of select, nonorganic and debris free clayey sands (SC) or slightly clayey silty sands (SM) with a PI in the range of 3 to 15 and a liquid limit less than 35 or silty clays (CL) or sandy clays (CY) having a plasticity index (PI) within the range of 10 to 24 and a liquid limit of less than 45. All fill soils should be free of organic matter, debris and any other deleterious material.
- The fill materials should be compacted from lifts not exceeding 9 inches in loose thickness to not less than 35 percent of standard Proctor (ASTM D-698) maximum dry density or 10 percent relative density. Fill materials should be placed in horizontal lifts at moisture contents within 3 percentage points of the optimum water content. Stability must be evident during compaction of each lift before any subsequent lifts of fill material are added. All backfill material over utilities, storm drains, etc. should be placed in accordance with preceding recommendations, except the lift thickness should be reduced to about 4 inches to 5 inches where hand operated compaction equipment is used.

SCHEDULE OF MATERIAL SYMBOLS:

- CRUSHED STONE OR GRAVEL
- CONCRETE WITH A SMOOTH TROWEL FINISH
-

Site Layout Plan
Scale: 1/8" = 1'-0"
NORTH