

These documents are the property of
Bailey & Associates Architects, LLC.
Any duplication in whole or in part
must be done with the written consent
of Bailey & Associates Architects, LLC

© Bailey & Associates

PROFESSIONAL SEAL

PROJECT NUMBER
0149.11.07

DATE: August 05, 2008
DRAWN BY: R.E.B.

CHECKED BY:

REVISIONS

No.	Date	By

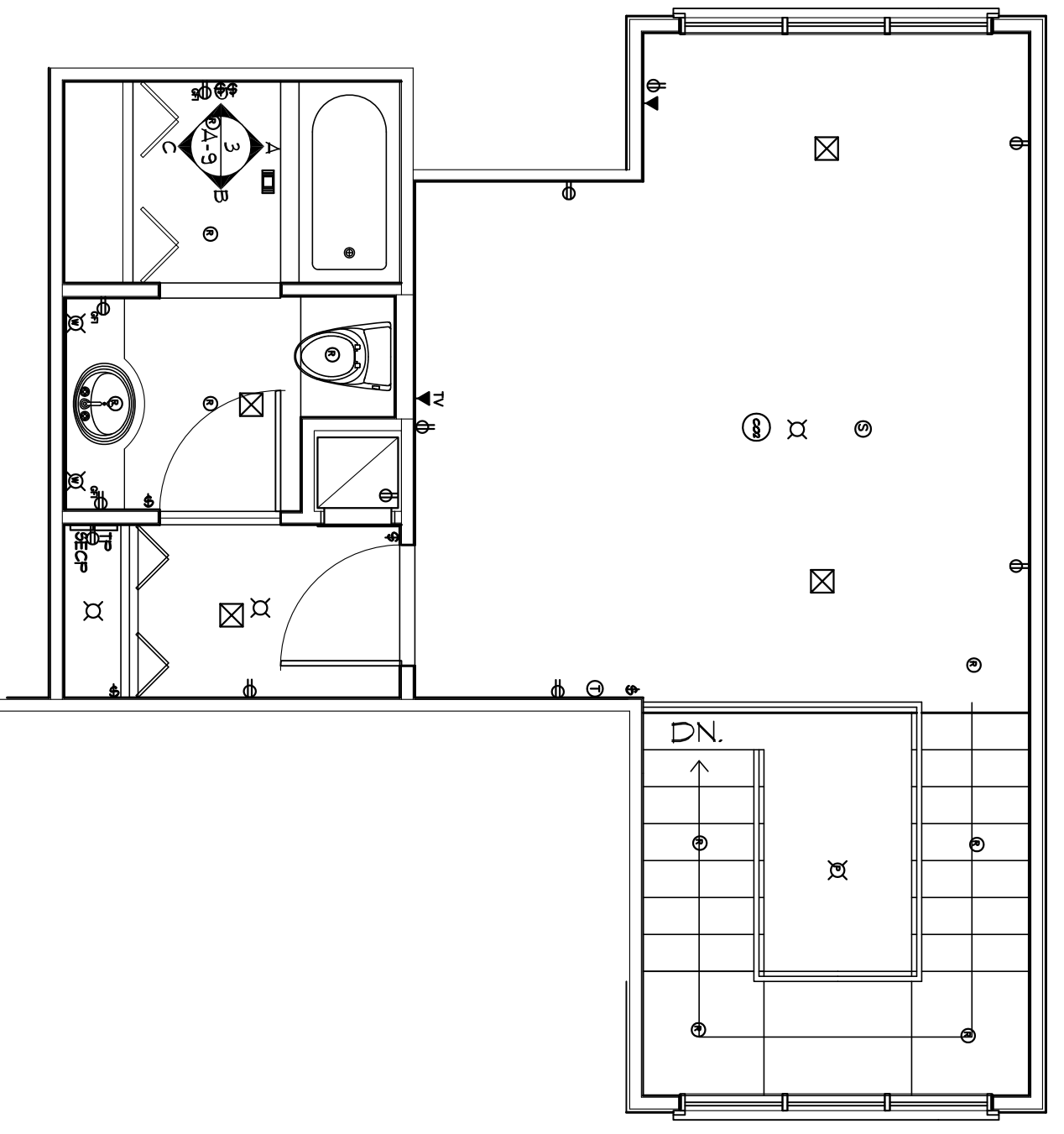
SHEET

E-1

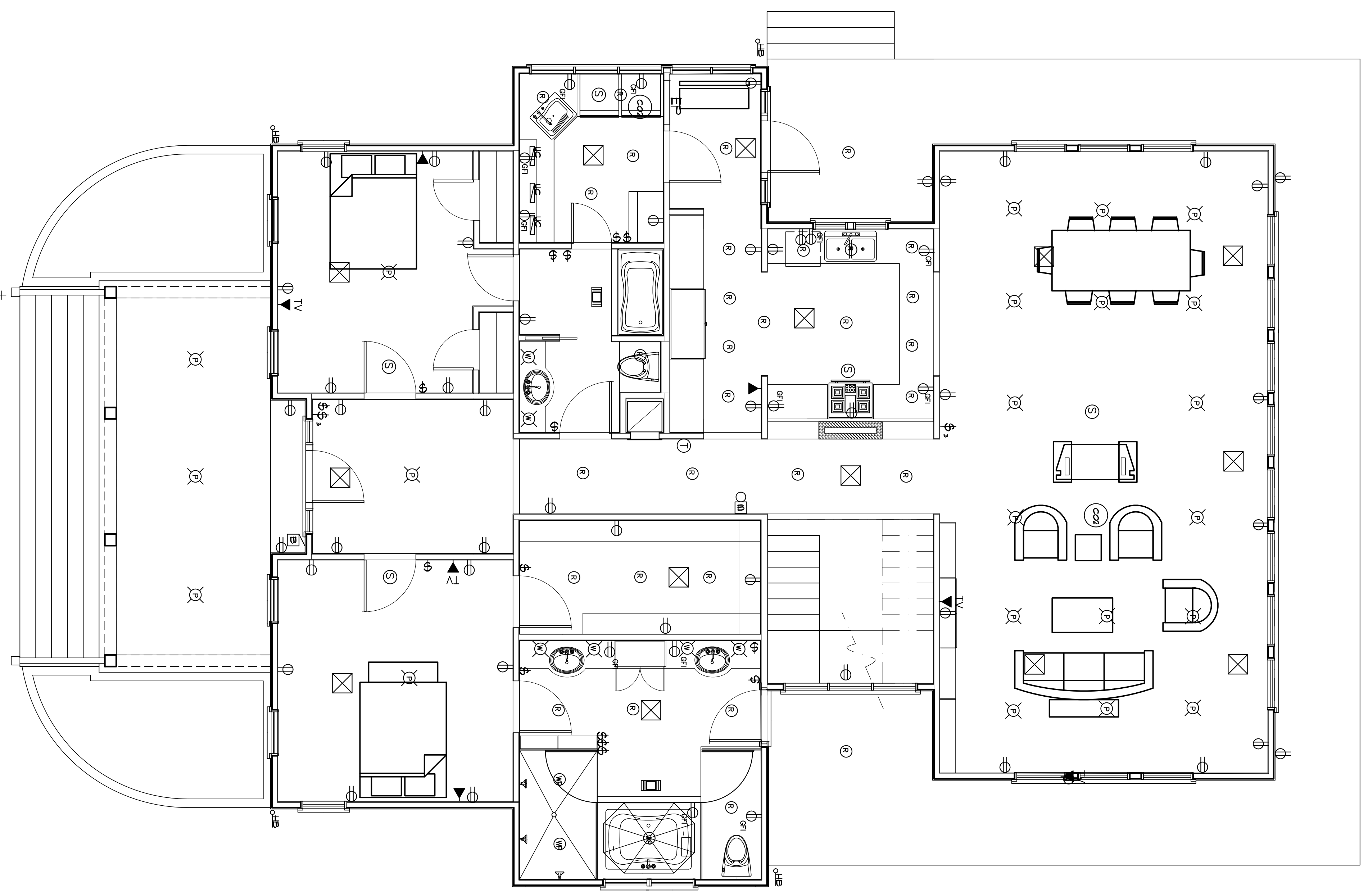
OF TOTAL SHEETS

MECHANICAL / ELECTRICAL SYMBOLS LEGEND	
	CEILING MOUNTED INCANDESCENT OR FLUORESCENT. SEE SPECIFICATIONS.
	WALL MOUNTED INCANDESCENT OR FLUORESCENT. SEE SPECIFICATIONS.
	RECESSED CAN INCANDESCENT OR FLUORESCENT. SEE SPECIFICATIONS.
	DAMP LOCATION RECESSED CAN INCANDESCENT OR FLUORESCENT. SEE SPECS.
	RECESSED CAN INCANDESCENT OR FLUORESCENT. SEE SPECIFICATIONS.
	TELEPHONE and DATA OUTLET CAT 5 ENHANCED OR FASTER
	RECESSED FLUORESCENT LIGHT (4 LAMP) SEE SPECIFICATIONS.
	1' X 4' PENDANT FLUORESCENT LIGHT (2 LAMP) SEE SPECIFICATIONS.
	CEILING FAN
	HEATER/VENT LIGHT (VENT THROUGH ROOF)
	WIRE OR CIRCUIT
	CABLE TV OUTLET MOUNTER 96" ABOVE FINISH FLOOR
	DOORBELL
	DOORBELL CHIME
	JUNCTION BOX
	SINGLE POLE LIGHT SWITCH
	3 WAY LIGHT SWITCH
	4 WAY LIGHT SWITCH
	LIGHT SWITCH WITH DIMMER
	DUPLEX OUTLET, AC DENOTES 4" ABOVE COUNTER. TOP, TYPICAL.
	220 VOLT OUTLET
	GROUND FAULT INTERRUPTER AT ALL WET LOCATIONS
	FLOOD LIGHT
	DISCONNECT SWITCH
	SMOKE DETECTOR
	ELECTRICAL PANEL
	SUPPLY AIR GRILLE
	EXTERIOR HOSE BIB
	WALL MOUNT PROGRAMMABLE SETBACK THERMOSTAT @ 52" AFF
	UNDERCABINET FLUORESCENT TASK LIGHT. SEE SPECIFICATIONS.
	FIRE EXTINGUISHER
	POWER METER
	MAIN ELECTRICAL PANEL
	TELEPHONE PANEL / INTERNET INTERFACE AND ROUTER.
	SECURITY AND FIRE SYSTEM PANEL.
	WATER HEATER
	CARBON MONOXIDE DETECTOR

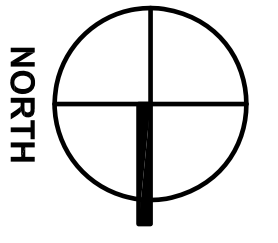
- GENERAL EQUIPMENT, POWER AND COMMUNICATIONS NOTES:
1. GENERAL ALL EQUIPMENT, SIZE AND PLACEMENT NEED OR EXISTING WITH OWNER FROM TO PLACEMENT NEW OR EXISTING WITH THE EXISTING ELECTRICAL SYSTEM.
 2. GENERAL WITH OWNER, COMPUTER CONSULTANT LOCATION FOR ALL INTERFACES AND COMPUTER PLACEMENT FROM TO INSTALLATION OF CONDUIT AND JUNCTION BOXES.
 3. GENERAL WITH OWNER, TELEPHONE AND COMMUNICATIONS CONSULTANT LOCATION FOR ALL INTERFACES FROM TO INSTALLATION OF CONDUIT AND JUNCTION BOXES.
 4. GENERAL WITH OWNER, PROVIDE ONE (1) 1/2" RAIN WATER DRAINAGE AT CLOSET FOR PLACEMENT OF ELECTRICAL PANEL.
 5. ELECTRICAL OUTLETS INDICATED IN EACH ROOM TO HAVE A TYPICAL HEIGHT OF 48 INCHES ABOVE FINISH FLOOR AT ALL LOCATIONS IN THE BATH FOR MIRROR TASK LIGHTS. COMPUTER SOCKET LOCATIONS WITH OWNER AND PROVIDE UNDERCABINET LIGHTING IS PROVIDED AT ALL WALL CLOSET LOCATIONS. COMPUTER LOCATIONS WITH OWNER.



Second Floor Electrical Plan
Scale: 1/4" = 1'-0"



First Floor Electrical Plan
Scale: 1/4" = 1'-0"



0 1' 2' 5' 10'