

# THE SAENGER THEATRE RENEWAL PROJECT

142 North Rampart Street  
New Orleans, LA

Client  
Saenger Theatre Redevelopment Company  
210 West Loop South, Suite 1040  
Houston TX 77027

Architect  
MARTINEZ+JOHNSON ARCHITECTURE  
1412 Eye St., NW  
Washington, DC 20005  
202.333.4480

Structural Engineer  
Shawn J. Franke, P.E.  
549 Helmer Road San Antonio TX 78232  
210.979.7900

Theatre Consultant  
Schuler Shook  
123 Third Street North #210  
Minneapolis, MN 55401  
612.339.5958

Acoustical Engineer  
Akustiks  
93 North Main Street South  
Norwalk, CT 06854  
202.292.1024

MEP Engineer  
JBA Consulting Engineers, Inc.  
3525 N. Causeway Blvd., Suite 500  
Metairie, LA 70002  
504.830.0139

Civil Engineer  
Linfield, Hunter, & Junius, Inc.  
3608 18th Street Suite 200  
Metairie, LA 70002  
504.833.5300

Architectural Historian  
EHT Traceries, Inc.  
1121 Fifth Street NW  
Washington, DC 20001  
202.393.1199

THESE DRAWINGS, SPECIFICATIONS, AND OTHER DOCUMENTS (COLLECTIVELY THE "DOCUMENTS") INCLUDING WITHOUT LIMITATION ELECTRONIC VERSIONS THEREOF AND THE DESIGN, CONSTRUCTION AND ARRANGEMENTS REPRESENTED THEREBY ARE AND SHALL REMAIN THE PROPERTY OF MARTINEZ+JOHNSON ARCHITECTURE PC. AS DEFINED BY APPLICABLE CONTRACTUAL AGREEMENTS (THE AGREEMENTS) AND AS PROTECTED BY THE COPYRIGHT STATUTES OF THE UNITED STATES. USE OF THE DOCUMENTS SHALL BE STRICTLY LIMITED TO THE PROJECT FOR WHICH THEY WERE PREPARED AND DEVELOPED (THE PROJECT) PER THE TERMS OF THE AGREEMENTS. NO PART OF THE DOCUMENTS SHALL BE COPIED, DISCLOSED TO OTHERS, OR USED IN CONNECTION WITH ANY OTHER WORK OR PROJECT, OR BY ANY OTHER PERSONS FOR ANY PURPOSES, OTHER THAN THE COMPLETION OF THE PROJECT, WITHOUT THE SPECIFIC WRITTEN AUTHORIZATION OF MARTINEZ+JOHNSON ARCHITECTURE PC. THE DOWNLOADING, OPENING, OR VIEWING OF ELECTRONIC VERSIONS OF THE DOCUMENTS OR VISUAL CONTACT WITH ANY PRINTED FORM THEREOF SHALL CONSTITUTE CONCLUSIVE EVIDENCE OF ACCEPTANCE OF THESE RESTRICTIONS.

7502

DATE:	No.:	ISSUE:
02.19.10	1	PERMIT SET
04.02.10	2	GMP CONTRACT SET
11.11.10	-	CONTRACT SET

DATE:	No.:	REVISION:
06.16.10	1	PERMIT REVISION

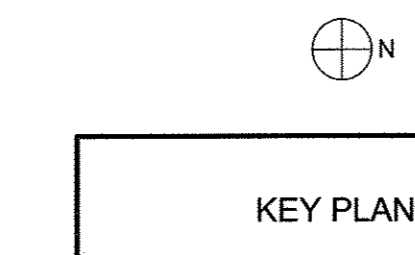
SHEET TITLE:  
CIVIL PLAN & PROFILE

C-1.03

LEGEND	
<b>EXISTING FEATURES</b>	
⊕ OR ⊞	EXIST. DROP INLET
—C—	EXIST. GUY WIRE
---W(SIZE)---	EXIST. WATERLINE
---G(SIZE)---	EXIST. GAS LINE
---E---E---	EXIST. UNDERGROUND ELECTRIC LINE
---S---S---	EXIST. SEWER LINE
---T---T---	EXIST. TELEPHONE LINE
---(SIZE)---	EXIST. DRAIN LINE
T.B.M.	TEMPORARY BENCHMARK
CS	THE POINT OF CHANGE FROM CIRCULAR CURVE TO SPIRAL
T.C.	TOP OF CASTING/CURB ELEVATION
EL	ELEVATION
HC	HANDICAP
SMH	SEWER MANHOLE
⊕	EXIST. SEWER MANHOLE
⊙	EXIST. DRAIN MANHOLE
⊖	EXIST. FIRE HYDRANT
⊕-W	EXIST. WATER VALVE
⊕-M	EXIST. WATER METER
⊕-G	GAS METER
⊕-V	GAS VALVE
C ⊕	EXIST. SEWER CLEANOUT
⊕	EXIST. SIGN
⊕	EXIST. BOLLARD
⊕	EXIST. FUEL FILLER LIDS
⊕	EXIST. LIGHT POLE
⊕	EXIST. TRAFFIC LIGHT
⊕	HOSE BIB
⊕	EXIST. TRAFFIC SIGNALBOX
⊕	EXIST. RIGHT-OF-WAY MARKER
⊕	EXIST. POWER OR TELEPHONE POLE
⊕	EXIST. CATCH BASIN
⊕	CROSS CUT IN CONC.
⊕	EXIST. BOUNDARY LINE
RCP	REINFORCED CONCRETE PIPE
CMP	CORRUGATED METAL PIPE
INV.	INVERT ELEVATION
CONC.	CONCRETE
S/W	SIDEWALK
x 6.58	EXIST. SPOT ELEVATION
FND	FOUND
—	OVERHEAD ELECTRIC
⊕	EXIST. TREE OR SHRUB
⊕	EXIST. DITCH
⊕	EXIST. CHAINLINK FENCE
⊕	EXIST. VINYL FENCE
⊕	FOUND IRON PIPE
⊕	EXIST. MAILBOX
⊕	EXIST. TELEPHONE PEDESTAL
⊕	EXIST. ELECTRICAL TRANSFORMER
⊕	EXIST. AC UNIT
⊕	EXIST. STEEL POLE
<b>NEW FEATURES</b>	
⊕	REQ'D DROP INLET
⊕	REQ'D SEWER MANHOLE
⊕	REQ'D DRAIN MANHOLE
⊕	REQ'D CONFLICT MANHOLE
⊕	REQ'D P.C.C.P.

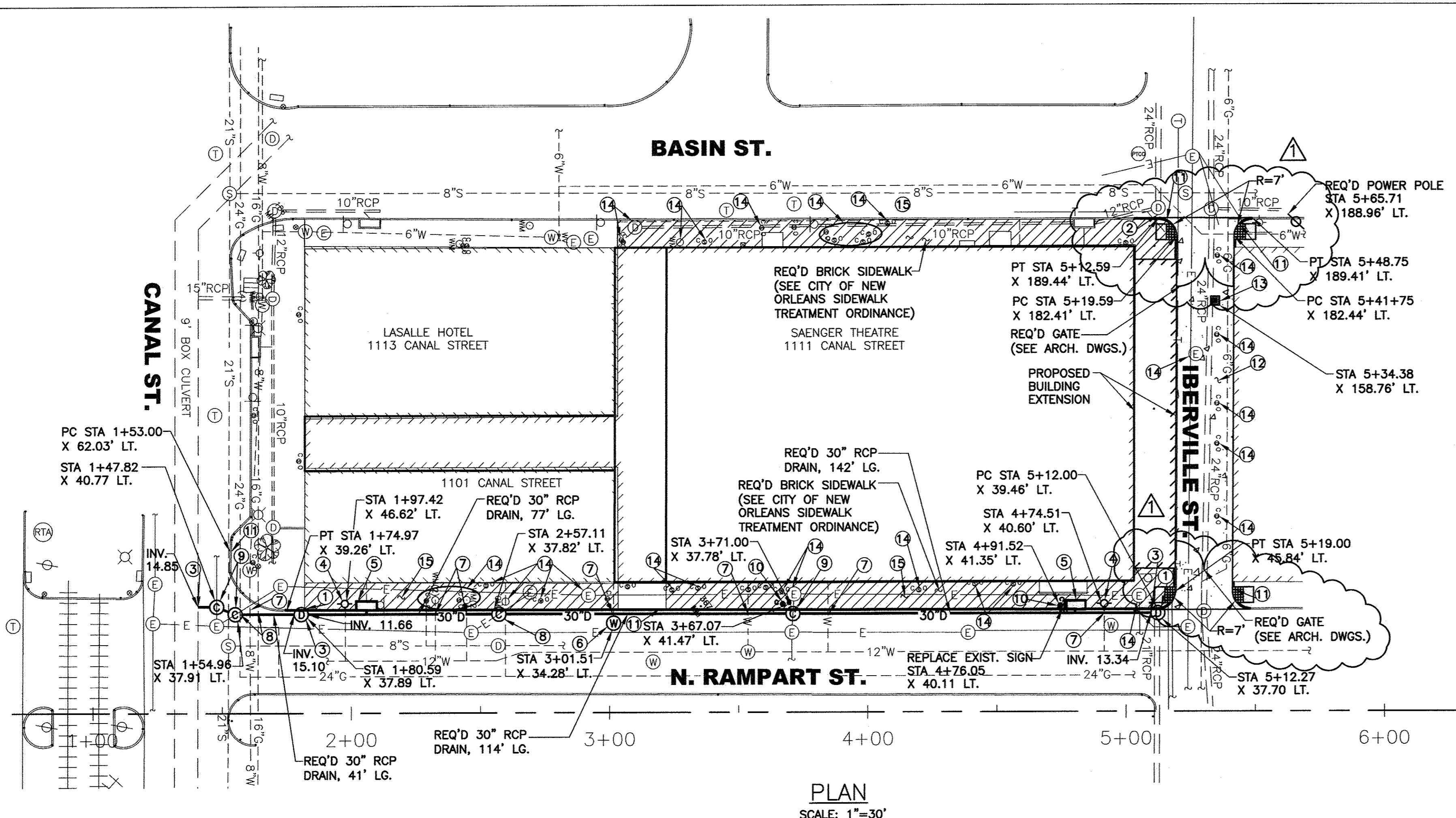
- GENERAL NOTES**
- ALL RADIAL PORTIONS OF NEW CURB TO BE CONCRETE AND NOT GRANITE AS PER DIRECTION OF THE CITY OF NEW ORLEANS PUBLIC WORKS.
  - CONTRACTOR SHALL NOT LEAVE ANY TRENCHES OPEN OVERNIGHT.
  - UNLESS OTHERWISE INDICATED ON THE PLANS, ALL TREES ARE TO REMAIN. SPECIAL ARE SHALL BE TAKEN TO AVOID DAMAGING TREES DURING CONSTRUCTION. WHERE TREES ARE ENCOUNTERED WHICH MAKE CONSTRUCTION AS SHOWN ON THE PLANS IMPOSSIBLE, THE NEW STRUCTURE SHALL BE RELOCATED AS DIRECTED BY THE PROJECT ENGINEER. THE CONTRACTOR SHALL NOTIFY THE DEPARTMENT OF PARKS AND PARKWAYS FOUR (4) WORKING DAYS PRIOR TO TRIMMING, RAISING BRANCHES, PRUNING OF EXISTING ROOTS, ETC., TO FACILITATE CONSTRUCTION.
  - THE CONTRACTOR SHALL COMPLY WITH ALL "HORTICULTURE REQUIREMENTS" SPECIFIED IN THE GENERAL SPECIFICATIONS OF THE DPW (1995) AND THE SPECIAL SPECIFICATIONS AND TREE PRESERVATION SPECIFICATION PERTAINING TO CITY TREES AFFECTED BY STREET CONSTRUCTION ISSUED BY THE DEPARTMENT OF PARKS AND PARKWAYS.
  - ALL TREE ROOTS OF CITY OWNED TREES, DAMAGED DURING REMOVAL OF CURBS, SIDEWALKS AND DRIVEWAYS SHALL BE ROOT PRUNED. ALL TREE ROOTS DAMAGED DURING ANY EXCAVATION OPERATION; YARD DRAINS, COLLECTOR LINES, ETC. SHALL BE ROOT PRUNED.
  - ALL TREE ROOTS PRUNED DUE TO CONSTRUCTION SHALL BE FERTILIZED USING A WATER-SOLUBLE FERTILIZER INJECTED INTO THE SOIL. THE MINIMUM ACCEPTABLE N-P-K RATIO SHALL BE 30-5-5. THE NUTRIENT COMPLEX AND RATIO (GAL./SQ. FT.) MUST BE APPROVED BY THE URBAN FORESTER OVERSEEING THE PROJECT.
  - MYCOR TREE SAVER TREATMENT OR APPROVED EQUAL SHALL BE APPLIED TO ALL CONSTRUCTION DAMAGED TREE ROOT ZONES PER MANUFACTURER'S DIRECTIONS.
  - ALL TREE ROOTS PRUNED SHALL BE TREATED FOR TERMITES. THE TERMITICIDE PREMISE MANUFACTURED BY BAYER CORPORATION SHALL BE USED PER MANUFACTURER'S DIRECTIONS.
  - ALL TREE REMOVALS, BRANCH PRUNING OR ROOT PRUNING SHALL BE PERFORMED BY A LICENSED ARBORIST, APPROVED BY THE DEPARTMENT OF PARKS AND PARKWAYS.

- SEWERAGE AND WATER BOARD NOTES**
- ALL WORK SHALL BE PERFORMED IN ACCORDANCE WITH THE SEWERAGE AND WATER BOARD (S&WB) GENERAL SPECIFICATIONS, S&WB STANDARD DRAWINGS, AND S&WB DRAWING NO. 7260.
  - PRIOR TO FINAL ACCEPTANCE OF THE DRAINAGE, WATER AND SEWER SYSTEMS, THE CONTRACTOR SHALL SUBMIT TO THE S&WB A COMPLETE SET OF AS-BUILT DRAWINGS SHOWING CHANGES IN LINE AND GRADE FROM THE ORIGINAL DRAWINGS, AND THE LOCATION AND DEPTH OF ALL HOUSE CONNECTIONS AS PER S&WB REQUIREMENTS.
  - ALL CHANGES TO THESE DRAWINGS WHICH CONCERN THE S&WB, MUST BE APPROVED BY THE S&WB PRIOR TO BEGINNING THE CONSTRUCTION.
  - THE CONTRACTOR SHALL PROTECT THE EXISTING UTILITIES BY PROVIDING ADEQUATE SUPPORT AND BRACING DURING INSTALLATION OF NEW UTILITIES UNDER THOSE EXISTING LINES. CONTRACTOR SHALL BE RESPONSIBLE FOR REPAIRING OR REPLACING THE EXISTING LINE IF DAMAGED.
  - CONTRACTOR SHALL CONTACT HADI AMINI (504-865-0445) OF THE S&WB CONSTRUCTION ADMINISTRATION & INSPECTION DEPARTMENT A MINIMUM OF 48 HOURS PRIOR TO BEGINNING CONSTRUCTION TO ARRANGE FOR INSPECTION.



CONSTRUCTION LEGEND

- REQ'D DRAIN MANHOLE (SEE S&WB STD. DWG. D-870)
- PLUG EXISTING MANHOLE WITH BRICK AND MORTAR.
- CONTRACTOR MUST VERIFY INVERT OF EXISTING DRAIN LINE PRIOR TO COMMENCING ANY DRAIN LINE WORK.
- REQ'D FIRE HYDRANT (SEE S&WB STD. DWG. NO. 6179-F-2)
- REQ'D CATCH BASIN (SEE S&WB STD. DWG. D-873)
- REQ'D WATER MANHOLE (SEE S&WB STD. DWG. D-870)
- INSTALL NEW DRAIN LINE BELOW EXISTING WATER LINE. IF CONFLICT EXISTS, OFFSET EXISTING WATERLINE. (SEE CITY OF NEW ORLEANS STD. PLAN 7)
- INSTALL NEW DRAIN LINE BELOW EXISTING GAS LINE. IF CONFLICT EXISTS, OFFSET EXISTING GAS LINE. (SEE CITY OF NEW ORLEANS STD. PLAN 7)
- REQ'D CONFLICT MANHOLE (SEE DETAIL 1, DWG. C-3.00)
- REQ'D SEWER CLEANOUT (SEE DETAIL 2, DWG. C-3.00)
- REQ'D GRANITE CURB; SEE NOTE 1; (SEE DETAIL 6, DWG. 3.00)
- REQ'D 8" PORTLAND CEMENT CONCRETE PAVEMENT (SEE DETAIL 3, DWG. C-3.00)
- REQ'D DROP INLET (SEE S&WB STD. DWG. NO. D-3264)
- ADJUST TOP OF CASTING TO MATCH NEW PAVEMENT GRADE
- REQ'D BRICK SIDEWALK (SEE DETAILS, DWG. C-3.01)
- NOT USED
- REQ'D BOX TIE-IN (SEE DETAIL 5, DWG. C-3.00)



PLAN SCALE: 1"=30'

PROFILE

PROFILE SCALE: 1"=30' (HORIZONTAL)  
1"= 3' (VERTICAL)

