

THE SAENGER THEATRE RENEWAL PROJECT

142 North Rampart Street
New Orleans, LA

Client
Saenger Theatre Redevelopment Company
200 West Loop South, Suite
1040 Houston TX 77027

Architect
MARTINEZ+JOHNSON
ARCHITECTURE

1412 Eye St., NW
Washington, DC 20005
202.333.4480

Structural Engineer
Shawn J. Franke, P.E.
549 Heimer Road San
Antonio TX 78232
210.979.7900

Theatre Consultant
Schuler Shook
123 Third Street North #210
Minneapolis, MN 55401
612.339.5958

Acoustical Engineer
Akustiks
93 North Main Street South
Norwalk, CT 06584
202.299.1904

MEP Engineer
JBA Consulting Engineers, Inc.
3525 N. Causeway Blvd. Suite
500 Metairie, LA 70002
504.830.0139

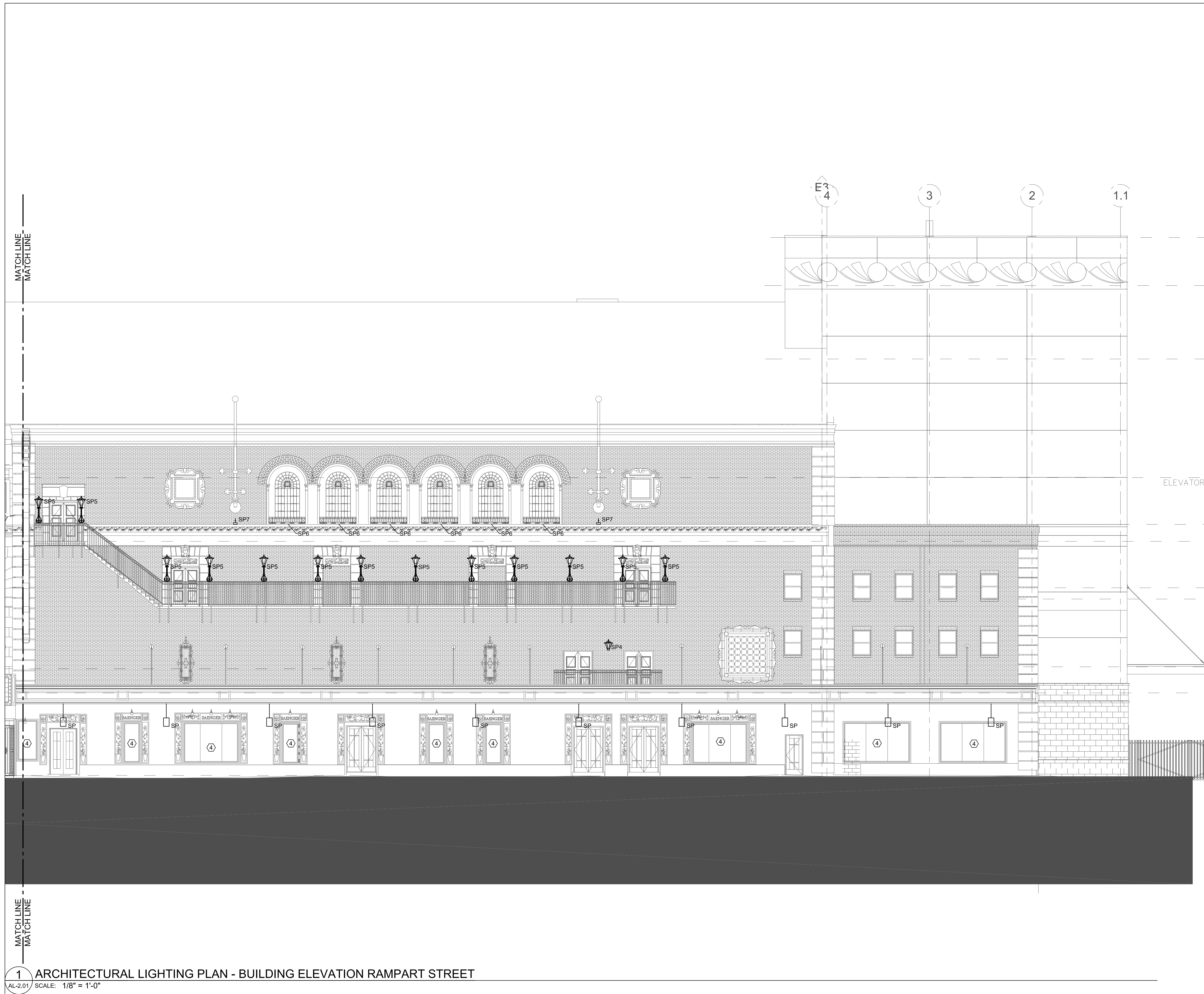
Civil Engineer
Linfield, Hunter, & Junius, Inc.
3608 18th Street Suite 200
Metairie, LA 70002
504.833.5300

Architectural Historian
EHT Traceries, Inc.
1121 Fifth Street NW
Washington, DC 20001
202.393.1199

THEATRE PLANNERS
LIGHTING DESIGNERS
Schuler Shook

THIS DRAWING INDICATES
LIGHTING EQUIPMENT
LAYOUT AND DESIGN OF
LIGHTING SYSTEMS.
REVIEW BY A QUALIFIED
ENGINEER IS NECESSARY
TO ASSURE SAFETY AND
CODE COMPLIANCE.

**FOR REFERENCE
ONLY**
REFER TO E-SERIES
DRAWINGS FOR ELECTRICAL
FEEDS, DISCONNECT
SWITCHES, CONDUIT, AND
WIRE FOR ALL LIGHTING
EQUIPMENT.
DIVISION 16 CONTRACTOR
SHALL PROVIDE AND
INSTALL ALL LIGHTING
EQUIPMENT AND CONTROL
WIRING INDICATED FOR A
COMPLETE AND OPERABLE
SYSTEM.



GENERAL NOTES:

- A. INSTALLATION SHALL CONFORM TO ALL APPLICABLE NEC, UL, STATE AND LOCAL CODES.
- B. ALL EMERGENCY EGRESS LIGHTING IS THE RESPONSIBILITY OF THE ELECTRICAL ENGINEER OR ELECTRICAL CONTRACTOR.
- C. ALL DIMMING CIRCUITS ARE TWO-WIRE. NO COMMON NEUTRALS SHALL BE USED.
- D. FIELD PAINT ALL CONDUIT, JUNCTION BOXES AND HARDWARE TO MATCH ADJACENT SURFACES.
- E. ELECTRICAL CONTRACTOR SHALL VERIFY ALL CEILING AND WALL TYPES, RECESS CONDITIONS, AND MOUNTING HARDWARE REQUIRED PRIOR TO PURCHASE OF ANY LIGHTING FIXTURES.
- F. ELECTRICAL CONTRACTOR SHALL VERIFY MOUNTING HEIGHTS OF ALL DECORATIVE FIXTURES WITH SCHULER SHOOK PRIOR TO INSTALLATION.
- G. ALL STEP LIGHTS SHALL BE MOUNTED AT +1'-6" A.F.F. TO CENTER OF FIXTURE UNLESS OTHERWISE NOTED.
- H. CONTRACTOR TO VERIFY ALL TYPE SR-SERIES HISTORIC ORNAMENTAL FIXTURES POWER REQUIREMENTS, MOUNTING HEIGHTS AND LOCATIONS PRIOR TO INSTALLATION.
- J. MOUNT TYPE SP8 18" ABOVE DOOR HEADER.

KEYED NOTES:

- 1. MOUNT TYPE SP6 AT ARCHITECTURAL LEDGE. AIM UP.
- 2. MOUNT TYPE SP2 AND TYPE SP9 ON ENTRY CANOPY. AIM TYPE SP2 UP AT STATUE BUST. AIM TYPE SP9 UP GRAZING TERRA COTTA FACADE.
- 3. MOUNT TYPE SP2 CLOSE TO BASE OF COLUMN. GRAZE UP COLUMN.
- 4. POSTER BOX AND POSTER BOX LIGHTING BY SIGN MANUFACTURER. PROVIDE POWER TO THIS LOCATION.

THESE DRAWINGS, SPECIFICATIONS, AND OTHER DOCUMENTS, COLLECTIVELY, THE "DOCUMENTS" INCLUDING WITHOUT LIMITATION ELECTRONIC VERSIONS THEREOF AND THE IDEAS, DESIGNS, AND ARRANGEMENTS REPRESENTED THEREBY, ARE AND SHALL REMAIN THE PROPERTY OF MARTINEZ & JOHNSON ARCHITECTURE P.C. AS DEFINED BY APPLICABLE CONTRACTUAL AGREEMENTS ("THE AGREEMENTS") AND AS PROTECTED BY THE COPYRIGHT STATUTES OF THE UNITED STATES. USE OF THE DOCUMENTS SHALL BE STRICTLY LIMITED TO THE PROJECT FOR WHICH THEY WERE PREPARED AND DEVELOPED ("THE PROJECT") PER THE TERMS OF THE AGREEMENTS. NO PART OF THE DOCUMENTS SHALL BE COPIED, DISCLOSED TO OTHERS, OR USED IN CONNECTION WITH ANY OTHER WORK OR PROJECT, OR BY ANY OTHER PERSONS FOR ANY PURPOSES OTHER THAN THE COMPLETION OF THE PROJECT, WITHOUT THE SPECIFIC WRITTEN AUTHORIZATION OF MARTINEZ & JOHNSON ARCHITECTURE P.C. THE DOWNLOADING, OPENING, OR VIEWING OF ELECTRONIC VERSIONS OF THE DOCUMENTS OR VISUAL CONTACT WITH ANY PRINTED FORM THEREOF SHALL CONSTITUTE CONCLUSIVE EVIDENCE OF ACCEPTANCE OF THESE RESTRICTIONS.

7502

DATE:	No.:	ISSUE:
02.19.10	1	PERMIT SET
04.02.10	2	GMP CONTRACT SET
11.11.10	-	CONTRACT SET

DATE:	No.:	REVISION:

SHEET TITLE:
**BUILDING ELEVATION
RAMPART STREET
ARCHITECTURAL
LIGHTING PLAN**

AL-2.01