

THIS DRAWING INDICATES LIGHTING EQUIPMENT LAYOUT AND DESIGN OF LIGHTING SYSTEMS. REVIEW BY A QUALIFIED ENGINEER IS NECESSARY TO ASSURE SAFETY AND CODE COMPLIANCE.

**FOR REFERENCE ONLY**  
REFER TO E-SERIES DRAWINGS FOR ELECTRICAL FEEDS, DISCONNECT SWITCHES, CONDUIT, AND WIRE FOR ALL LIGHTING EQUIPMENT. DIVISION 16 CONTRACTOR SHALL PROVIDE AND INSTALL ALL LIGHTING EQUIPMENT AND CONTROL WIRING INDICATED FOR A COMPLETE AND OPERABLE SYSTEM.

**THE SAENGER THEATRE RENEWAL PROJECT**

142 North Rampart Street  
New Orleans, LA

Client  
Saenger Theatre Redevelopment Company  
200 West Loop South, Suite 1040 Houston TX 77027

Architect  
**MARTINEZ+JOHNSON**  
ARCHITECTURE

1412 Eye St., NW  
Washington, DC 20005  
202.333.4480

Structural Engineer  
Shawn J. Franke, P.E.  
549 Helmer Road San Antonio TX 78232  
210.979.7900

Theatre Consultant  
Schuler Shook  
123 Third Street North #210  
Minneapolis, MN 55401  
612.339.5958

Acoustical Engineer  
Akustiks  
93 North Main Street South Norwalk, CT 06854  
202.299.1504

MEP Engineer  
JBA Consulting Engineers, Inc.  
3525 N. Causeway Blvd. Suite 500 Metairie, LA 70002  
504.830.0139

Civil Engineer  
Linfield, Hunter, & Junius, Inc.  
3608 18th Street Suite 200 Metairie, LA 70022  
504.833.5300

Architectural Historian  
EHT Traceries, Inc.  
1121 Fifth Street NW Washington, DC 20001  
202.393.1199

**THEATRE PLANNERS LIGHTING DESIGNERS**  
Schuler Shook

THESE DRAWINGS, SPECIFICATIONS, AND OTHER DOCUMENTS, COLLECTIVELY, THE "DOCUMENTS" INCLUDING WITHOUT LIMITATION ELECTRONIC VERSIONS THEREOF AND THE IDEAS, DESIGNS, AND ARRANGEMENTS REPRESENTED THEREBY, ARE AND SHALL REMAIN THE PROPERTY OF MARTINEZ & JOHNSON ARCHITECTURE P.C. AS DEFINED BY APPLICABLE CONTRACTUAL AGREEMENTS ("THE AGREEMENTS") AND AS PROTECTED BY THE COPYRIGHT STATUTES OF THE UNITED STATES. USE OF THE DOCUMENTS SHALL BE STRICTLY LIMITED TO THE PROJECT FOR WHICH THEY WERE PREPARED AND DEVELOPED ("THE PROJECT") PER THE TERMS OF THE AGREEMENTS. NO PART OF THE DOCUMENTS SHALL BE COPIED, DISCLOSED TO OTHERS, OR USED IN CONNECTION WITH ANY OTHER WORK OR PROJECT, OR BY ANY OTHER PERSONS FOR ANY PURPOSES, OTHER THAN THE COMPLETION OF THE PROJECT, WITHOUT THE SPECIFIC WRITTEN AUTHORIZATION OF MARTINEZ & JOHNSON ARCHITECTURE P.C. THE DOWNLOADING, OPENING, OR VIEWING OF ELECTRONIC VERSIONS OF THE DOCUMENTS OR VISUAL CONTACT WITH ANY PRINTED FORM THEREOF SHALL CONSTITUTE CONCLUSIVE EVIDENCE OF ACCEPTANCE OF THESE RESTRICTIONS.

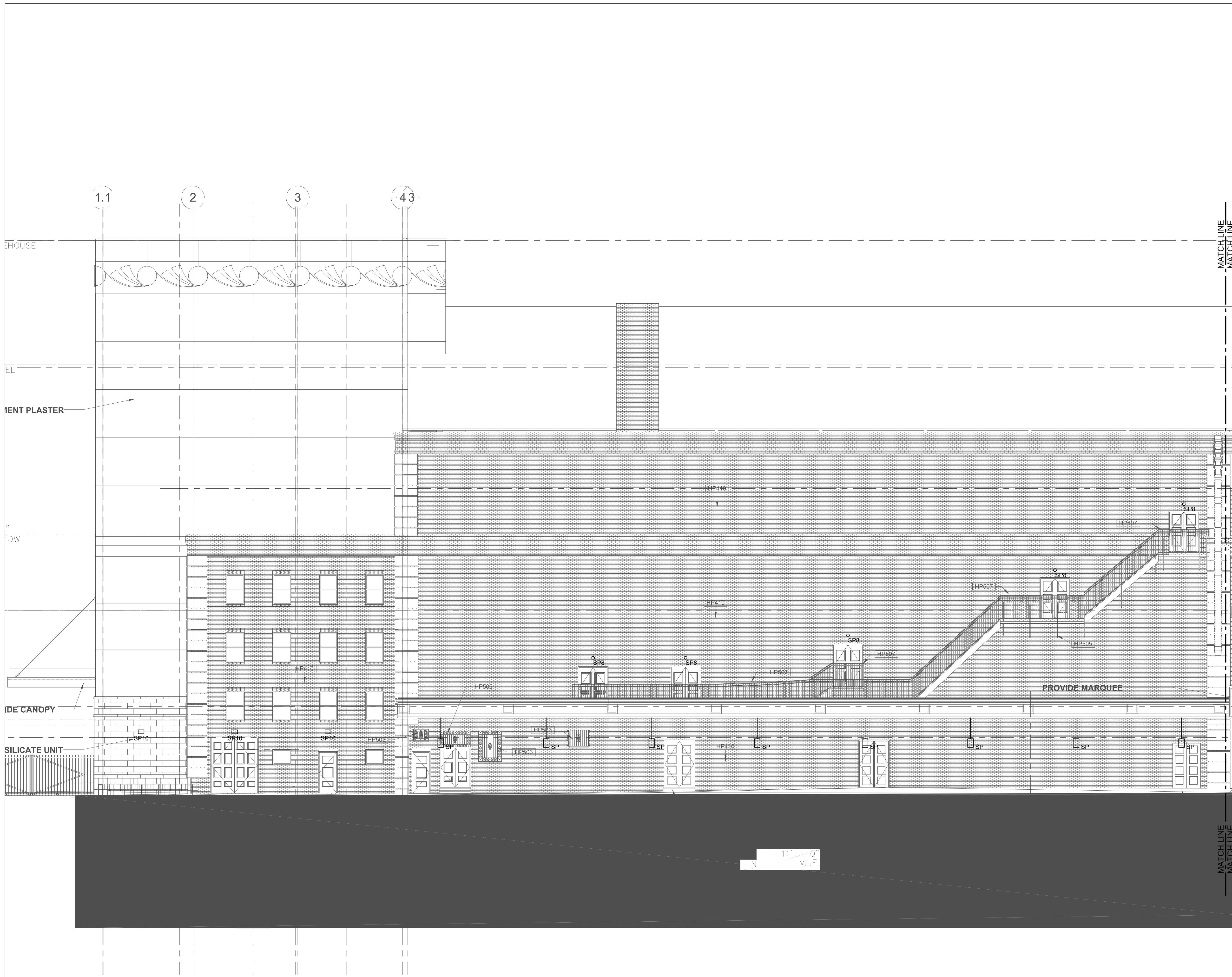
7502

DATE:	No.:	ISSUE:
02.19.10	1	PERMIT SET
04.02.10	2	GMP CONTRACT SET
11.11.10	-	CONTRACT SET

DATE:	No.:	REVISION:

SHEET TITLE:  
**BUILDING ELEVATION  
BASIN STREET  
ARCHITECTURAL  
LIGHTING PLAN**

**AL-2.03**



**GENERAL NOTES:**

- A. INSTALLATION SHALL CONFORM TO ALL APPLICABLE NEC, UL, STATE AND LOCAL CODES.
- B. ALL EMERGENCY EGRESS LIGHTING IS THE RESPONSIBILITY OF THE ELECTRICAL ENGINEER OR ELECTRICAL CONTRACTOR.
- C. ALL DIMMING CIRCUITS ARE TWO-WIRE. NO COMMON NEUTRALS SHALL BE USED.
- D. FIELD PAINT ALL CONDUIT, JUNCTION BOXES AND HARDWARE TO MATCH ADJACENT SURFACES.
- E. ELECTRICAL CONTRACTOR SHALL VERIFY ALL CEILING AND WALL TYPES, RECESS CONDITIONS, AND MOUNTING HARDWARE REQUIRED PRIOR TO PURCHASE OF ANY LIGHTING FIXTURES.
- F. ELECTRICAL CONTRACTOR SHALL VERIFY MOUNTING HEIGHTS OF ALL DECORATIVE FIXTURES WITH SCHULER SHOOK PRIOR TO INSTALLATION.
- G. ALL STEP LIGHTS SHALL BE MOUNTED AT +1'-6" A.F.F. TO CENTER OF FIXTURE UNLESS OTHERWISE NOTED.
- H. CONTRACTOR TO VERIFY ALL TYPE SR-SERIES HISTORIC ORNAMENTAL FIXTURES POWER REQUIREMENTS, MOUNTING HEIGHTS AND LOCATIONS PRIOR TO INSTALLATION.
- J. MOUNT TYPE SP8 18" ABOVE DOOR HEADER.

**KEYED NOTES:**

- 1. MOUNT TYPE SP6 AT ARCHITECTURAL LEDGE. AIM UP.
- 2. MOUNT TYPE SP2 AND TYPE SP9 ON ENTRY CANOPY. AIM TYPE SP2 UP AT STATUE BUST. AIM TYPE SP9 UP GRAZING TERRA COTTA FACADE.
- 3. MOUNT TYPE SP2 CLOSE TO BASE OF COLUMN. GRAZE UP COLUMN.
- 4. POSTER BOX AND POSTER BOX LIGHTING BY SIGN MANUFACTURER. PROVIDE POWER TO THIS LOCATION.

**1 ARCHITECTURAL PARTIAL LIGHTING PLAN - BUILDING ELEVATION BASIN STREET**  
AL-2.03 / SCALE: 1/8" = 1'-0"