

THIS DRAWING INDICATES LIGHTING EQUIPMENT LAYOUT AND DESIGN OF LIGHTING SYSTEMS. REVIEW BY A QUALIFIED ENGINEER IS NECESSARY TO ASSURE SAFETY AND CODE COMPLIANCE.

**FOR REFERENCE ONLY**  
 REFER TO E-SERIES DRAWINGS FOR ELECTRICAL FEEDS, DISCONNECT SWITCHES, CONDUIT, AND WIRE FOR ALL LIGHTING EQUIPMENT. DIVISION 16 CONTRACTOR SHALL PROVIDE AND INSTALL ALL LIGHTING EQUIPMENT AND CONTROL WIRING INDICATED FOR A COMPLETE AND OPERABLE SYSTEM.

# THE SAENGER THEATRE RENEWAL PROJECT

142 North Rampart Street  
 New Orleans, LA

Client  
 Saenger Theatre Redevelopment Company  
 200 West Loop South, Suite 1040  
 Houston TX 77027

Architect  
**MARTINEZ+JOHNSON**  
 ARCHITECTURE

1412 Eye St., NW  
 Washington, DC 20005  
 202.333.4480

Structural Engineer  
 Shawn J. Franke, P.E.  
 549 Heimer Road San Antonio TX 78232  
 210.979.7900

Theatre Consultant  
 Schuler Shook  
 123 Third Street North #210  
 Minneapolis, MN 55401  
 612.339.5958

Acoustical Engineer  
 Akustiks  
 93 North Main Street South  
 Norwalk, CT 06854  
 202.299.1504

MEP Engineer  
 JBA Consulting Engineers, Inc.  
 3525 N. Causeway Blvd., Suite 500  
 Metairie, LA 70002  
 504.830.0139

Civil Engineer  
 Linfield, Hunter, & Junius, Inc.  
 3608 18th Street Suite 200  
 Metairie, LA 70002  
 504.833.5300

Architectural Historian  
 EHT Traceries, Inc.  
 1121 Fifth Street NW  
 Washington, DC 20001  
 202.393.1199

**THEATRE PLANNERS LIGHTING DESIGNERS**  
 Schuler Shook

THESE DRAWINGS, SPECIFICATIONS, AND OTHER DOCUMENTS, COLLECTIVELY, THE "DOCUMENTS" INCLUDING WITHOUT LIMITATION ELECTRONIC VERSIONS THEREOF AND THE IDEAS, DESIGNS, AND ARRANGEMENTS REPRESENTED THEREIN, ARE AND SHALL REMAIN THE PROPERTY OF MARTINEZ & JOHNSON ARCHITECTURE PC, AS DEFINED BY APPLICABLE CONTRACTUAL AGREEMENTS ("THE AGREEMENTS") AND AS PROTECTED BY THE COPYRIGHT STATUTES OF THE UNITED STATES. USE OF THE DOCUMENTS SHALL BE STRICTLY LIMITED TO THE PROJECT FOR WHICH THEY WERE PREPARED AND DEVELOPED ("THE PROJECT") PER THE TERMS OF THE AGREEMENTS. NO PART OF THE DOCUMENTS SHALL BE COPIED, DISCLOSED TO OTHERS, OR USED IN CONNECTION WITH ANY OTHER WORK OR PROJECT, OR BY ANY OTHER PERSONS FOR ANY PURPOSES, OTHER THAN THE COMPLETION OF THE PROJECT, WITHOUT THE SPECIFIC WRITTEN AUTHORIZATION OF MARTINEZ & JOHNSON ARCHITECTURE PC. THE DOWNLOADING, OPENING, OR VIEWING OF ELECTRONIC VERSIONS OF THE DOCUMENTS OR VISUAL CONTACT WITH ANY PRINTED FORM THEREOF SHALL CONSTITUTE CONCLUSIVE EVIDENCE OF ACCEPTANCE OF THESE RESTRICTIONS.

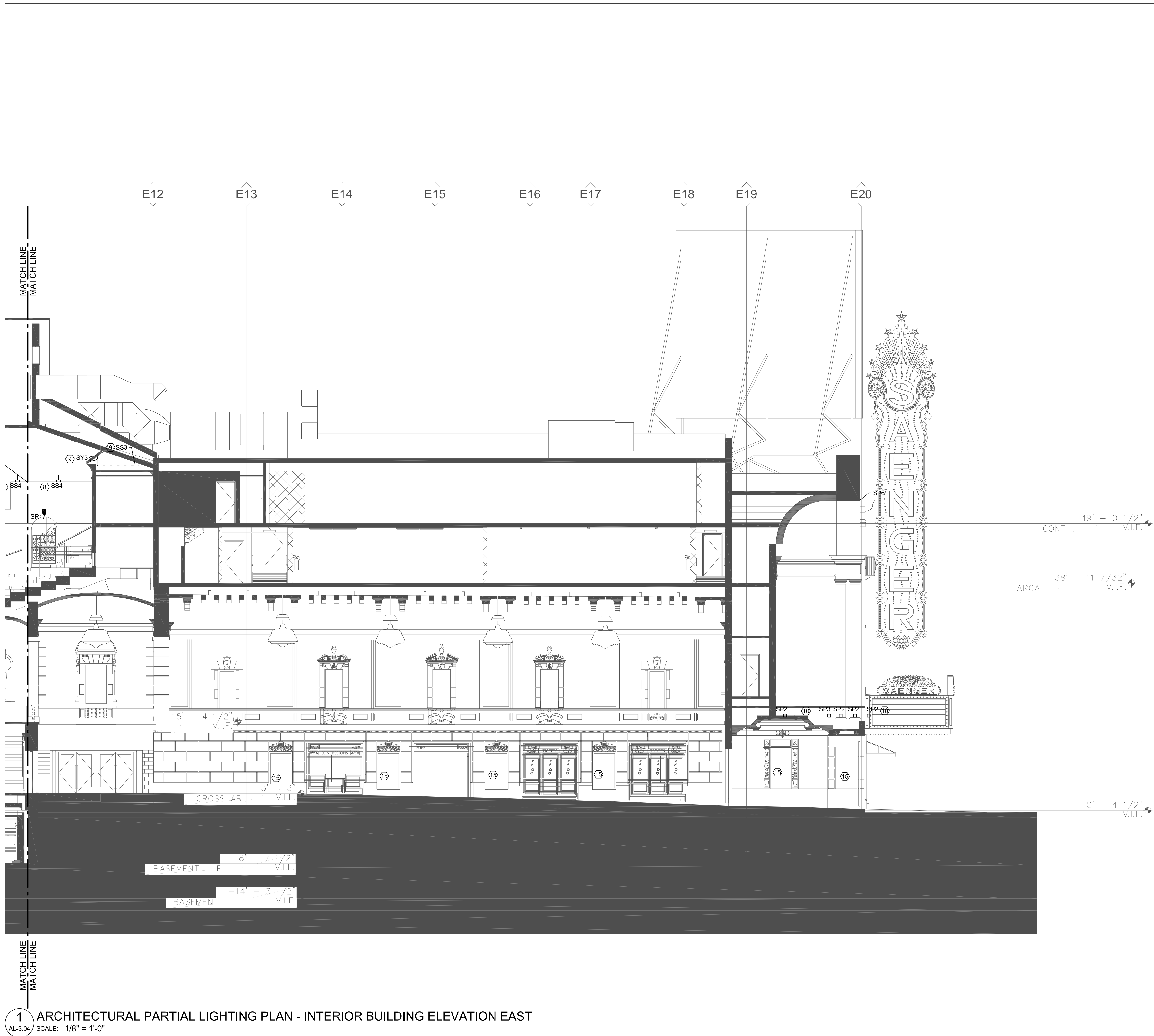
7502

DATE:	No.:	ISSUE:
02.19.10	1	PERMIT SET
04.02.10	2	GMP CONTRACT SET
11.11.10	-	CONTRACT SET

DATE: No.: REVISION:

SHEET TITLE:  
**INTERIOR BUILDING ELEVATION EAST ARCHITECTURAL LIGHTING PLAN**

**AL-3.04**



1 ARCHITECTURAL PARTIAL LIGHTING PLAN - INTERIOR BUILDING ELEVATION EAST  
 AL-3.04 SCALE: 1/8" = 1'-0"