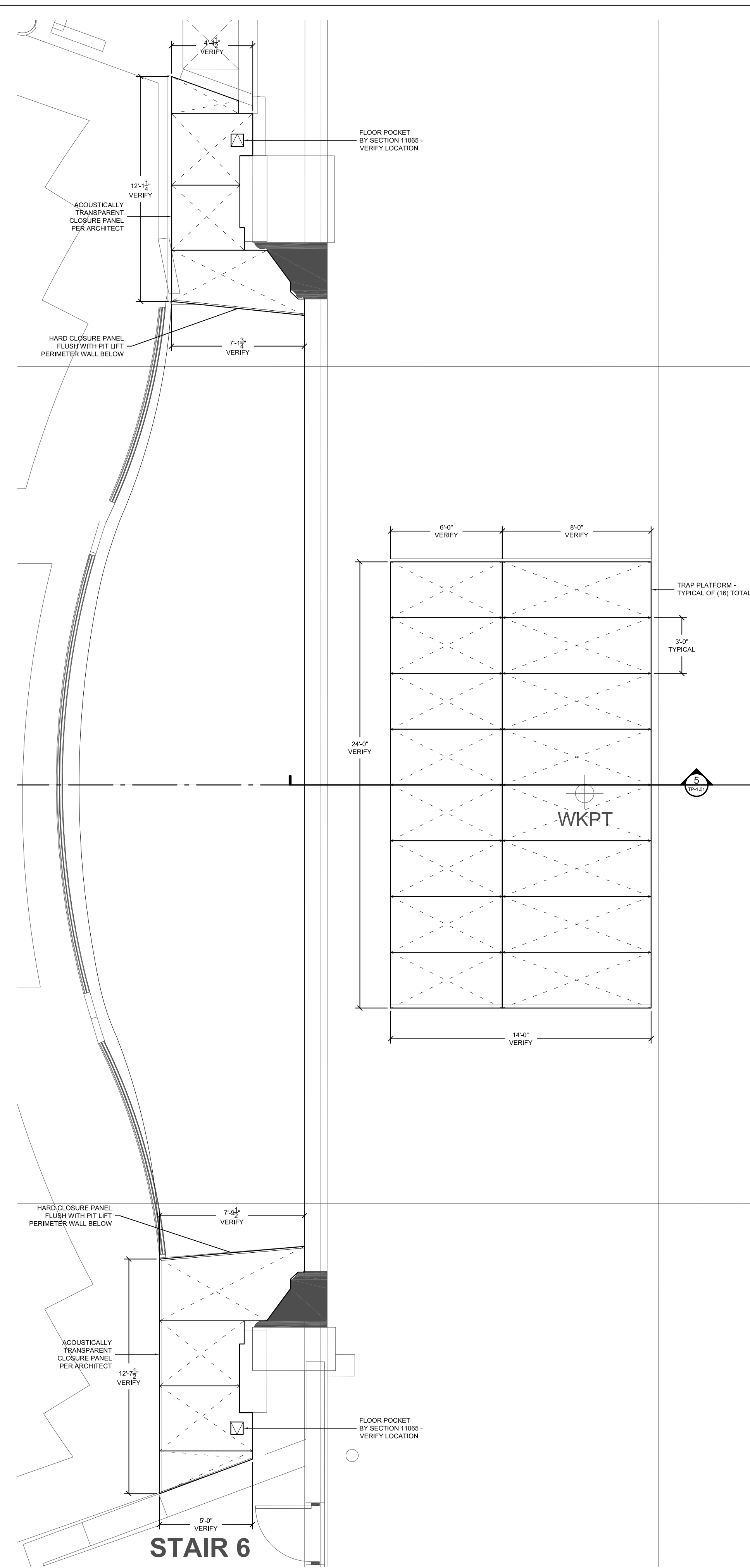
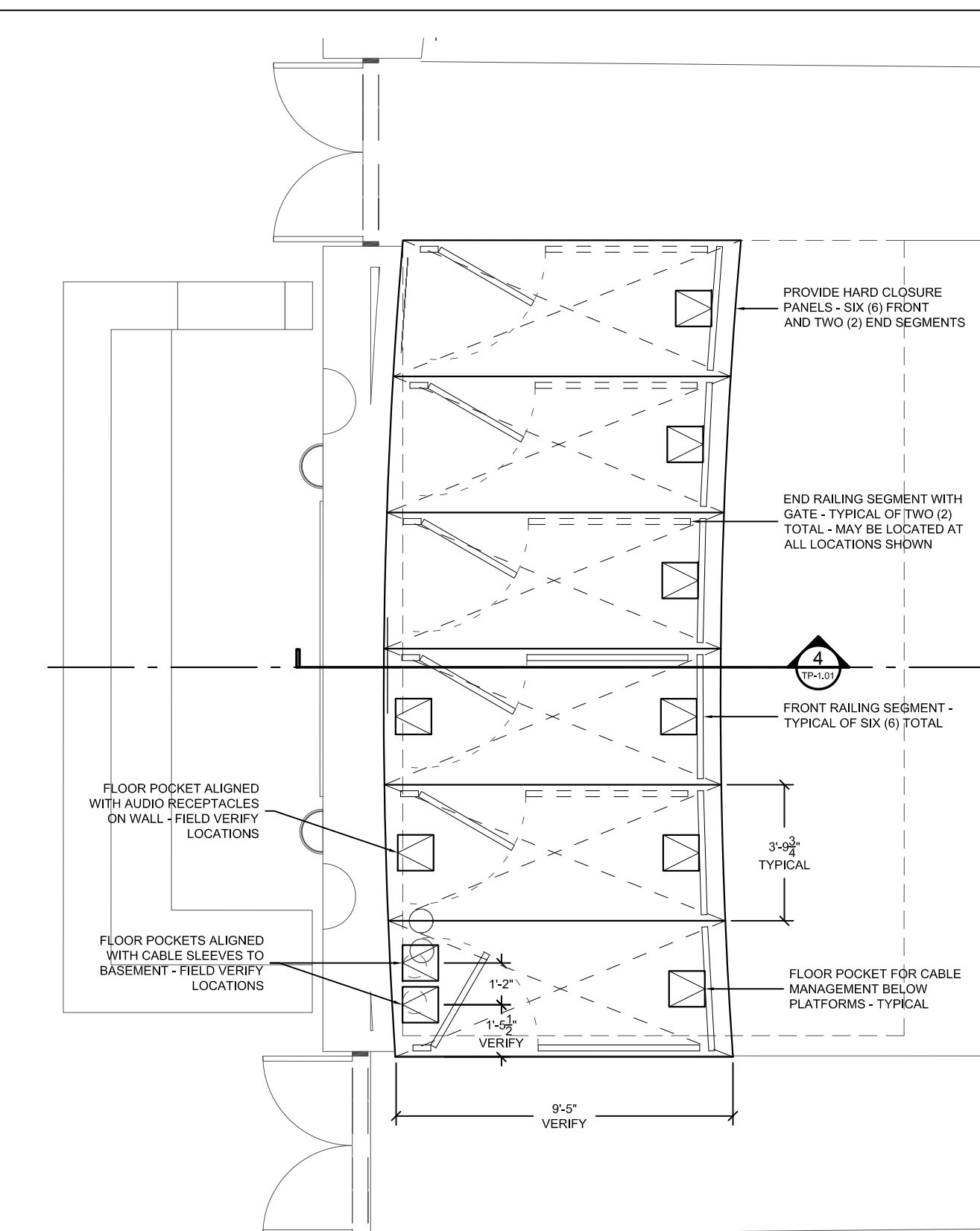


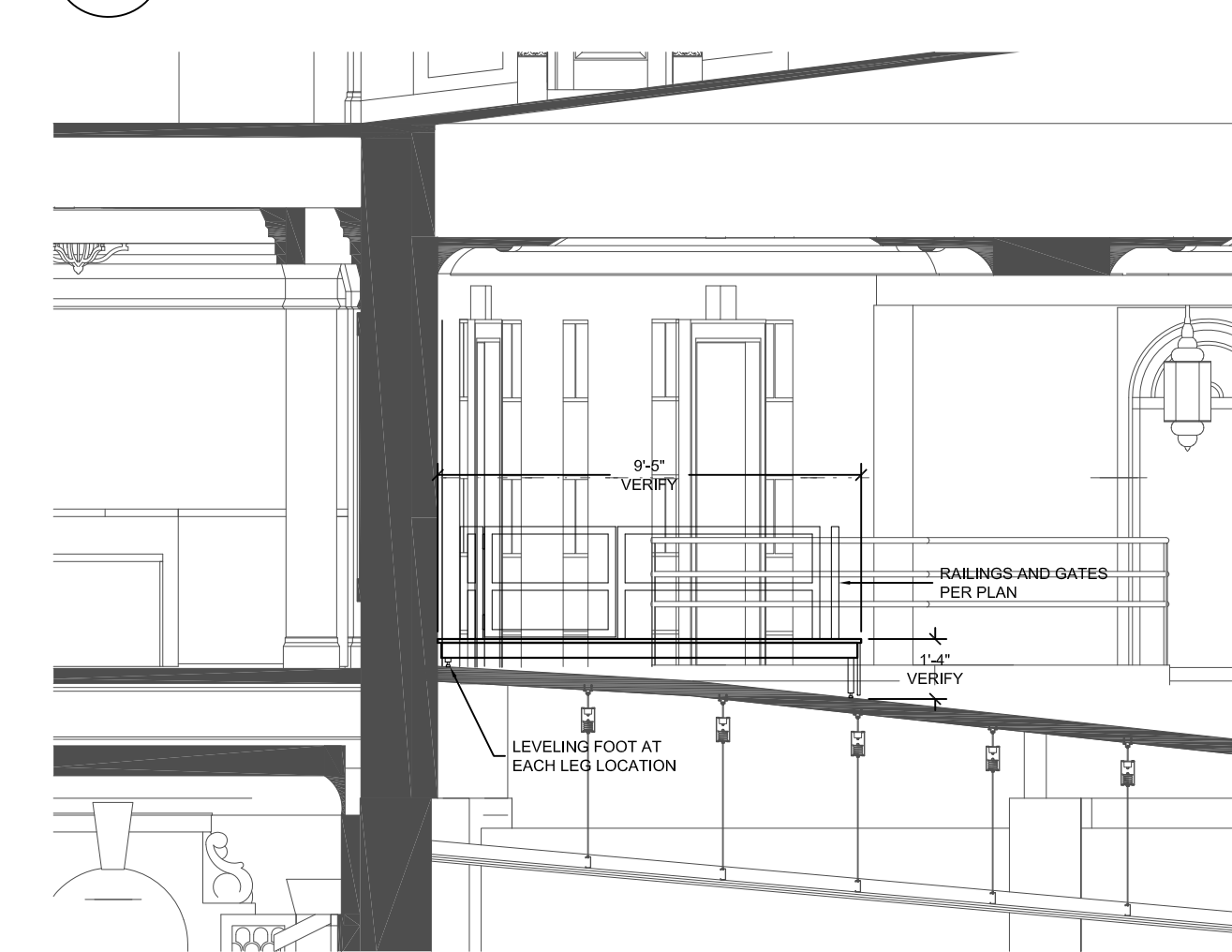
1 ORCHESTRA PIT AND STAGE TRAP PLATFORM PLAN  
TP-1.01 SCALE: 1/4" = 1'-0"



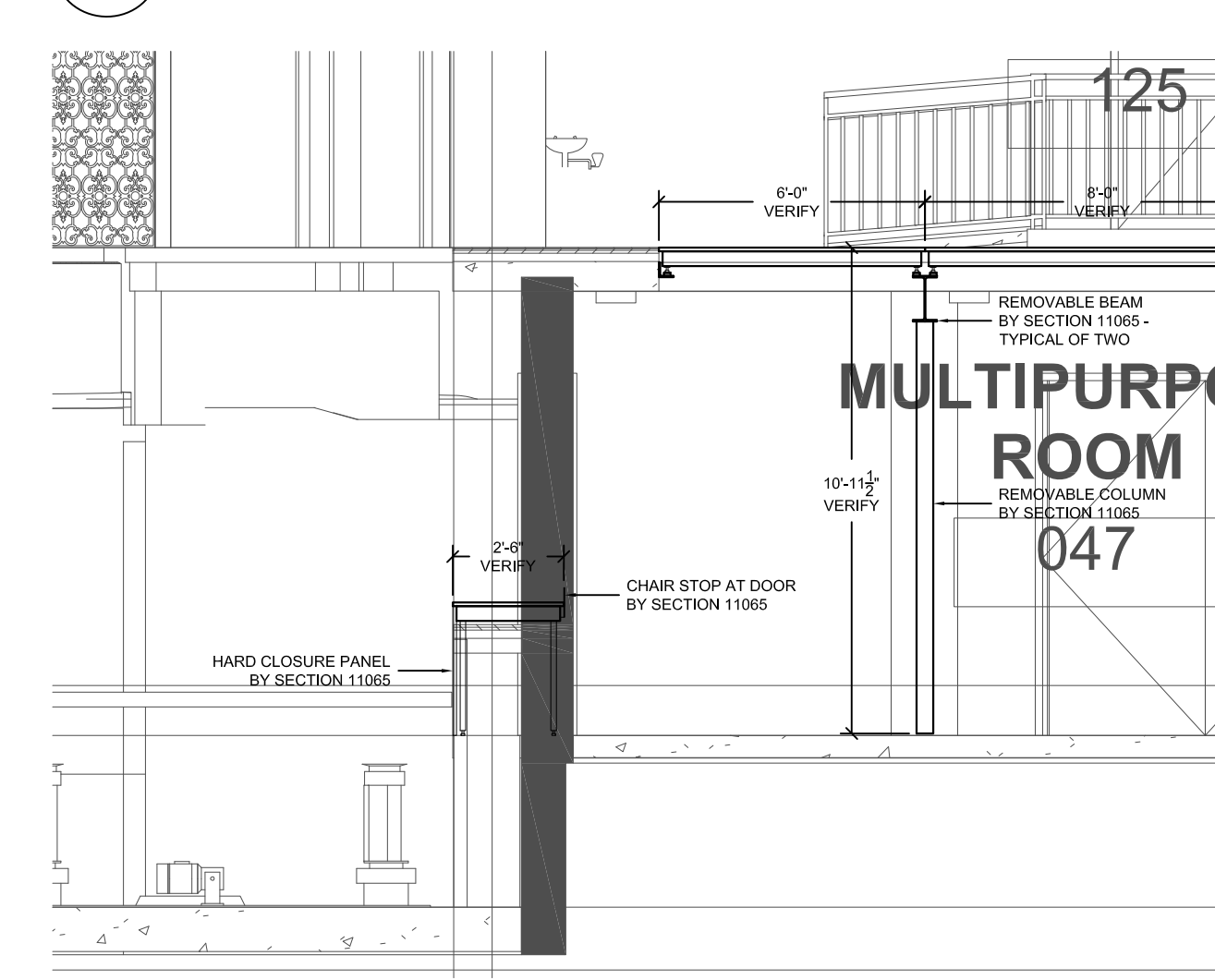
2 APRON AND STAGE TRAP PLATFORM PLAN  
TP-1.01 SCALE: 1/4" = 1'-0"



3 AUDIO MIX PLATFORM PLAN  
TP-1.01 SCALE: 1/4" = 1'-0"



4 AUDIO MIX PLATFORM SECTION  
TP-1.01 SCALE: 1/4" = 1'-0"



5 ORCHESTRA PIT AND STAGE TRAP PLATFORM SECTION  
TP-1.01 SCALE: 1/4" = 1'-0"

REFER TO E-SERIES DRAWINGS FOR ELECTRICAL FEEDS, DISCONNECT SWITCHES, CONDUIT, AND WIRE FOR ALL THEATRE PIT LIFT EQUIPMENT. DIVISION 16 CONTRACTOR SHALL PROVIDE AND INSTALL ALL ELECTRICAL EQUIPMENT AND CONTROL WIRING FOR A COMPLETE AND OPERABLE SYSTEM.

THIS DRAWING INDICATES THEATRE EQUIPMENT LAYOUT AND DESIGN OF THEATRE SYSTEMS. REVIEW BY A QUALIFIED ENGINEER IS NECESSARY TO ASSURE SAFETY AND CODE COMPLIANCE.

**THE SAENGER THEATRE RENEWAL PROJECT**  
142 North Rampart Street  
New Orleans, LA

Client  
Saenger Theatre Redevelopment Company  
200 West Loop South, Suite 1040  
Houston TX 77027

Architect  
**MARTINEZ+JOHNSON ARCHITECTURE**  
1412 Eye St., NW  
Washington, DC 20005  
202.333.4480

Structural Engineer  
Shawn J. Franke, P.E.  
549 Heimer Road San Antonio TX 78232  
210.979.7900

Theatre Consultant  
Schuler Shook  
123 Third Street North #210  
Mississippi, MN 55401  
612.339.5958

Acoustical Engineer  
Akustiks  
93 North Main Street South  
Norwalk, CT 06854  
202.299.1504

MEP Engineer  
JBA Consulting Engineers, Inc.  
3525 N. Causeway Blvd., Suite 500  
Metairie, LA 70002  
504.830.0139

Civil Engineer  
Linfield, Hunter, & Junius, Inc.  
3608 18th Street Suite 200  
Metairie, LA 70002  
504.833.5300

Architectural Historian  
EHT Traceries, Inc.  
1121 Fifth Street NW  
Washington, DC 20001  
202.393.1199

**THEATRE PLANNERS LIGHTING DESIGNERS**  
Schuler Shook

THESE DRAWINGS, SPECIFICATIONS, AND OTHER DOCUMENTS, COLLECTIVELY, THE "DOCUMENTS" INCLUDING WITHOUT LIMITATION ELECTRONIC VERSIONS THEREOF AND THE IDEAS, DESIGNS, AND ARRANGEMENTS REPRESENTED THEREBY, ARE AND SHALL REMAIN THE PROPERTY OF MARTINEZ & JOHNSON ARCHITECTURE P.C. AS DEFINED BY APPLICABLE CONTRACTUAL AGREEMENTS ("THE AGREEMENTS") AND AS PROTECTED BY THE COPYRIGHT STATUTES OF THE UNITED STATES. USE OF THE DOCUMENTS SHALL BE STRICTLY LIMITED TO THE PROJECT FOR WHICH THEY WERE PREPARED AND DEVELOPED ("THE PROJECT") PER THE TERMS OF THE AGREEMENTS. NO PART OF THE DOCUMENTS SHALL BE COPIED, DISCLOSED TO OTHERS, OR USED IN CONNECTION WITH ANY OTHER WORK OR PROJECT, OR BY ANY OTHER PERSONS FOR ANY PURPOSES OTHER THAN THE COMPLETION OF THE PROJECT, WITHOUT THE SPECIFIC WRITTEN AUTHORIZATION OF MARTINEZ & JOHNSON ARCHITECTURE P.C. THE DOWNLOADING, OPENING, OR VIEWING OF ELECTRONIC VERSIONS OF THE DOCUMENTS OR VISUAL CONTACT WITH ANY PRINTED FORM THEREOF SHALL CONSTITUTE CONCLUSIVE EVIDENCE OF ACCEPTANCE OF THESE RESTRICTIONS.

7502

DATE:	No.:	ISSUE:
02.19.10	1	PERMIT SET
04.02.10	2	GMP CONTRACT SET
11.11.10	-	CONTRACT SET

DATE:	No.:	REVISION:

SHEET TITLE:  
**THEATRE PLATFORM PLANS, SECTION AND DETAILS**

**TP-1.01**