

THE SAENGER THEATRE RENEWAL PROJECT

142 North Rampart Street
New Orleans, LA

Client
Saenger Theatre Redevelopment Company
200 West Loop South, Suite 1040
Houston TX 77027

Architect
MARTINEZ+JOHNSON ARCHITECTURE

1412 Eye St., NW
Washington, DC 20005
202.333.4480

Structural Engineer
Shawn J. Franke, P.E.
549heimer Road, San Antonio TX 78232
210.979.7900

Theatre Consultant
Schuler Shook
123 Third Street North #210
Minneapolis, MN 55401
612.333.5559

Acoustical Engineer
Akustiks
93 North Main Street South
Norwalk, CT 06854
202.299.1904

MEP Engineer
JBA Consulting Engineers, Inc.
3525 N. Causeway Blvd. Suite 500
Metairie, LA 70002
504.830.0139

Civil Engineer
Linfield, Hunter, & Junius, Inc.
3608 18th Street Suite 200
Metairie, LA 70002
504.833.5302

Architectural Historian
EHT Traceries, Inc.
1121 Fifth Street NW
Washington, DC 20001
202.393.1199

NOTES

- 1 PROVIDE 20A, 4 POLE RELAY.
- 2 TO SHOWER LIGHTS, SEE SHEET E-1.00.
- 3 RECEPTACLE FOR SUMP PIT. COORDINATE ROUGH-IN LOCATION WITH PIT AND PLUMBING DRAWINGS.
- 4 PROVIDE JUNCTION BOX FOR CONNECTION TO SUMP ALARM MODULE.
- 5 PROVIDE GFCI RECEPTACLE, SWITCH AND FLUORESCENT LIGHTS (LITHONIA #VR2C). LOCATE IN ELEVATOR PIT AS DIRECTED BY THE ELEVATOR MANUFACTURER. (NEMA 3R RATED FOR ANY DEVICES BELOW +48").
- 6 PROVIDE J-BOX FOR CONNECTION TO TEMPERING STATION. COORDINATE WITH DIVISION 15.
- 7 DRESSING ROOM RECEPTACLE PILOT LIGHT TO INDICATE RECEPTACLE POWER ENERGIZED. ROUTE THROUGH SPACE RELAY CONTACT.
- 8 PROVIDE 20A, 6 POLE RELAY.
- 9 PROVIDE 20A, 4 POLE RELAY.
- 10 PROVIDE 120V CONNECTION AS INDICATED TO AV EQUIPMENT. REFER TO AV DRAWINGS.
- 11 RECEPTACLE CONNECTION TO TRASH COMPACTOR. PROVIDE CORD & PLUG SET.
- 12 PROVIDE 120V CONNECTION TO DATA RACKS. COORDINATE REQUIREMENTS DATA CONSULTANT.
- 13 PROVIDE 120V CONNECTION TO FIRE ALARM REMOTE POWER SUPPLY.
- 14 LOCATE 18" ABOVE THE PLAY LEVEL CONFIGURATION.
- 15 RECEPTACLE FOR DRYER, 30A, 120/208V, 1PH, NEMA 14-30R.
- 16 J-BOX FOR CONNECTION TO FUTURE DISPLAY CASE LIGHTING.
- 17 RECEPTACLE FOR EWC, COORDINATE ROUGH-IN LOCATION & HEIGHT WITH DIVISION 15. PROVIDE CORD & PLUG SET.
- 18 CONNECTION FOR TRAP PRIMER. COORDINATE WITH DIVISION 15.
- 19 CONNECT TO LIFT, INSTALL AND WIRE ALL CONTROLS, ETC. PER MANUFACTURER'S REQUIREMENTS.
- 20 PROVIDE WIREMOLD SERIES 3000 SURFACE MOUNTED RACEWAY SYSTEM, INCLUDING ALL ACCESSORIES FOR A COMPLETE ASSEMBLY.

THESE DRAWINGS, SPECIFICATIONS, AND OTHER DOCUMENTS, COLLECTIVELY, THE "DOCUMENTS" INCLUDING WITHOUT LIMITATION, ELECTRONIC VERSIONS THEREOF AND THE IDEAS, DESIGNS, AND ARRANGEMENTS REPRESENTED THEREBY, ARE AND SHALL REMAIN THE PROPERTY OF MARTINEZ+JOHNSON ARCHITECTURE, P.C. AS DEFINED BY APPLICABLE CONTRACTUAL AGREEMENTS (THE "AGREEMENTS") AND AS PROTECTED BY THE COPYRIGHT STATUTES OF THE UNITED STATES. USE OF THE DOCUMENTS SHALL BE STRICTLY LIMITED TO THE PROJECT FOR WHICH THEY WERE PREPARED AND DEVELOPED (THE "PROJECT") FOR THE TERMS OF THE AGREEMENTS. NO PART OF THE DOCUMENTS SHALL BE COPIED, DISCLOSED TO OTHERS, OR USED IN CONNECTION WITH ANY OTHER WORK OR PROJECT, OR BY ANY OTHER PERSONS FOR ANY PURPOSES, OTHER THAN THE COMPLETION OF THE PROJECT, WITHOUT THE SPECIFIC WRITTEN AUTHORIZATION OF MARTINEZ+JOHNSON ARCHITECTURE, P.C. THE BORROWING, OPENING, OR VIEWING OF ELECTRONIC VERSIONS OF THE DOCUMENTS OR VISUAL CONTACT WITH ANY PRINTED FORM THEREOF SHALL CONSTITUTE CONCLUSIVE EVIDENCE OF ACCEPTANCE OF THESE RESTRICTIONS.

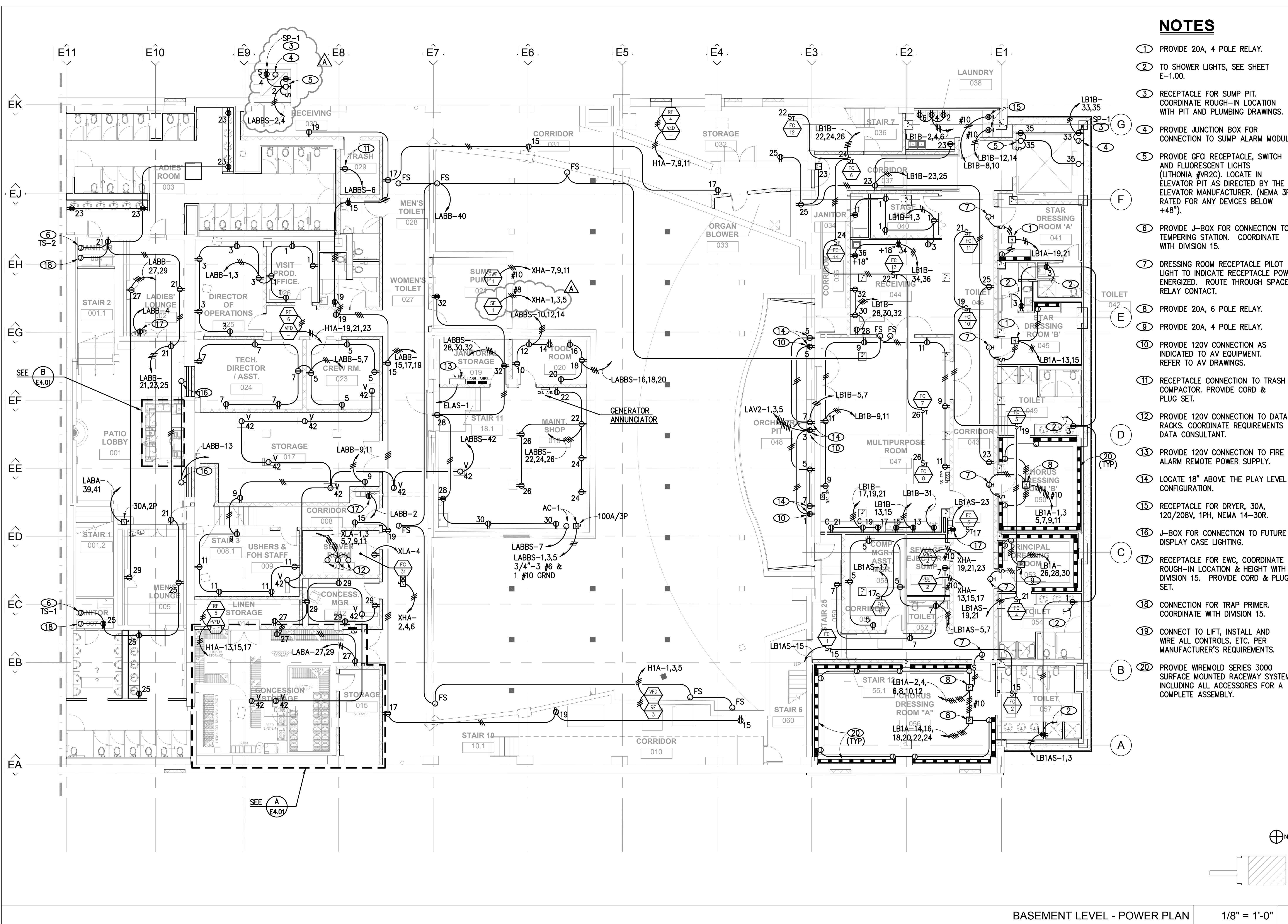
7502

DATE:	No.:	ISSUE:
02.19.10	1	PERMIT SET
04.02.10	2	GMP CONTRACT SET

DATE:	No.:	REVISION:
11.11.10		CONTRACT SET

SHEET TITLE:
BASEMENT LEVEL -
POWER PLAN

E-2.00



BASEMENT LEVEL - POWER PLAN

1/8" = 1'-0"

1

ISSUED FOR PERMIT

© 2010 M+J

09.0394