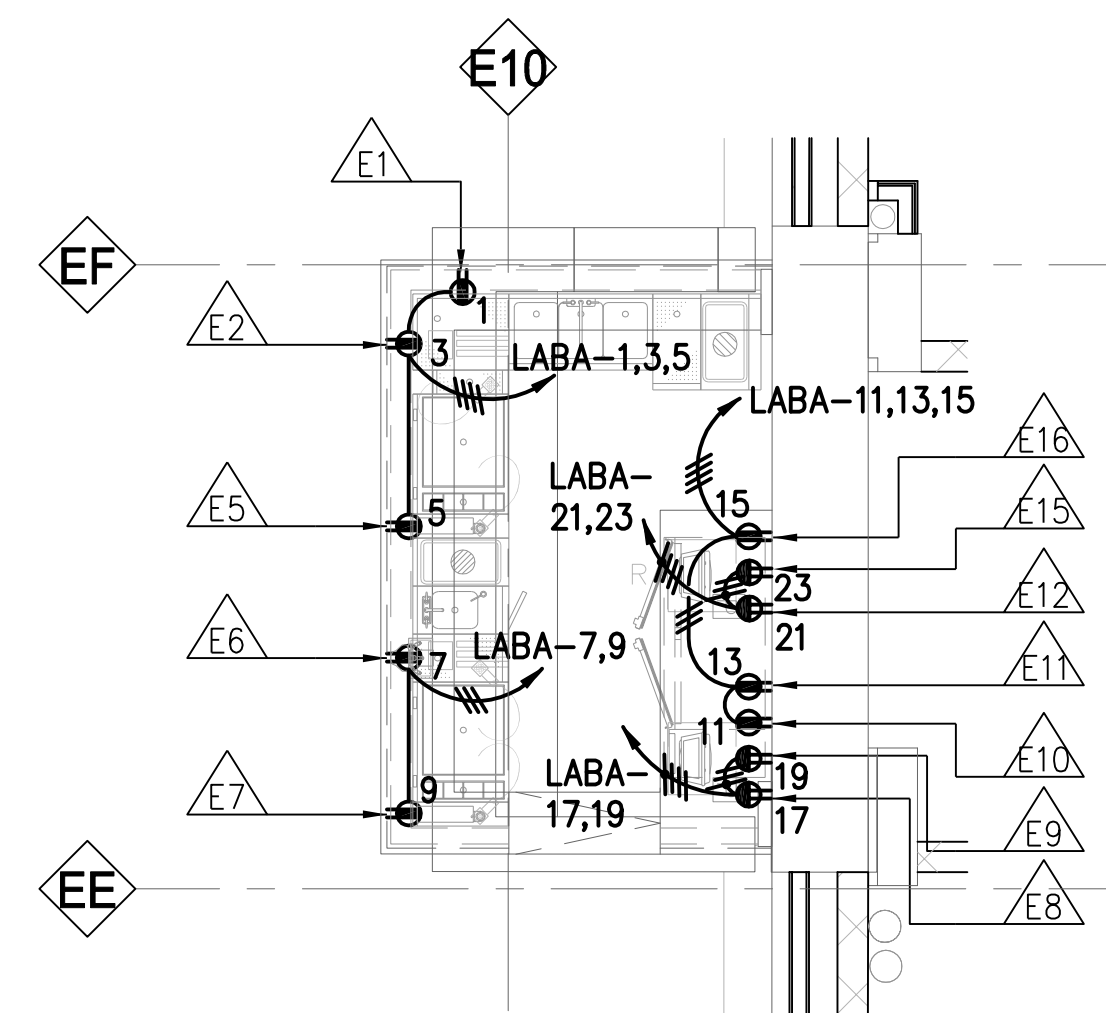


CONCESSION STORAGE - BASEMENT LEVEL (A) E4.01
SCALE: 1/4" = 1'-0"



BAR - BASEMENT LEVEL (B) E4.01
SCALE: 1/4" = 1'-0"

NOTICE

- REFER TO KITCHEN EQUIPMENT DRAWINGS FOR EXACT ROUGH-IN LOCATIONS AND MOUNTING HEIGHTS.
- CONTRACTOR SHALL PROVIDE LIQUID-TITE FLEX FOR HARDWIRED KITCHEN EQUIPMENT.
- SEE FOOD SERVICE DRAWINGS FOR SODA, BEER REFRIGERATION AND LIQUOR LINE REQUIREMENTS.
- CONTRACTOR SHALL INSTALL COOLER/FREEZER LIGHT FIXTURES AND PROVIDE INTERCONNECTING CONDUIT, WIRE, SEAL-OFFS, SEALANT AND MAKE FINAL CONNECTIONS TO SPLICE BOXES.
- PROVIDE ALL INTERCONNECTING CONDUITS AND WIRING BETWEEN COOLER/FREEZER, EVAPORATOR COIL, TERMINAL BLOCK, ROOM THERMOSTAT, LIQUID LINE SOLENOID VALVE, SWITCH AND COMPRESSOR CONTROL PANEL MAKE FINAL CONNECTIONS AS PER THE MANUFACTURER'S WIRING DIAGRAMS.

NOTES

- 20A, 208V, 1PH, NEMA 6-20 RECEPTACLE. VERIFY CONFIGURATION WITH EQUIPMENT FURNISHED.

THE SAENGER THEATRE RENEWAL PROJECT

142 North Rampart Street
New Orleans, LA

Client
Saenger Theatre Redevelopment Company
200 West Loop South, Suite 1040
Houston TX 77027

Architect
MARTINEZ+JOHNSON
ARCHITECTURE
1412 Eye St., NW
Washington, DC 20005
202.333.4480

Structural Engineer
Shawn J. Franke, P.E.
549heimer Road, San Antonio TX 78232
210.979.7900

Theatre Consultant
Schuler Shook
123 Third Street North #210
Minneapolis, MN 55401
612.333.5550

Acoustical Engineer
Akustiks
93 North Main Street South
Norwalk, CT 06884
202.299.1904

MEP Engineer
JBA Consulting Engineers, Inc.
3525 N. Causeway Blvd. Suite 500
Metairie, LA 70002
504.830.0139

Civil Engineer
Linfield, Hunter, & Junius, Inc.
3608 18th Street Suite 200
Metairie, LA 70002
504.333.5300

Architectural Historian
EHT Traceries, Inc.
1121 Fifth Street NW
Washington, DC 20001
202.393.1199

THESE DRAWINGS, SPECIFICATIONS, AND OTHER DOCUMENTS, COLLECTIVELY, THE "DOCUMENTS" INCLUDING WITHOUT LIMITATION ELECTRONIC VERSIONS THEREOF AND THE IDEAS, DESIGNS, AND ARRANGEMENTS REPRESENTED THEREBY, ARE AND SHALL REMAIN THE PROPERTY OF MARTINEZ & JOHNSON ARCHITECTURE PC AS DEFINED BY APPLICABLE CONTRACTUAL AGREEMENTS ("THE AGREEMENTS") AND AS PROTECTED BY THE COPYRIGHT STATUTES OF THE UNITED STATES. USE OF THE DOCUMENTS SHALL BE STRICTLY LIMITED TO THE PROJECT FOR WHICH THEY WERE PREPARED AND DEVELOPED ("THE PROJECT") FOR THE TERMS OF THE AGREEMENTS. NO PART OF THE DOCUMENTS SHALL BE COPIED, DISCLOSED TO OTHERS, OR USED IN CONNECTION WITH ANY OTHER WORK OR PROJECT, OR BY ANY OTHER PERSONS FOR ANY PURPOSES, OTHER THAN THE COMPLETION OF THE PROJECT, WITHOUT THE SPECIFIC WRITTEN AUTHORIZATION OF MARTINEZ & JOHNSON ARCHITECTURE PC. THE DOING, GIVING, OPENING, OR VIEWING OF ELECTRONIC VERSIONS OF THE DOCUMENTS OR VISUAL CONTACT WITH ANY PRINTED FORM THEREOF SHALL CONSTITUTE CONCLUSIVE EVIDENCE OF ACCEPTANCE OF THESE RESTRICTIONS.

7502

DATE:	No.:	ISSUE:
02.19.10	1	PERMIT SET
04.02.10	2	GMP CONTRACT SET

DATE:	No.:	REVISION:
11.11.10		CONTRACT SET

SHEET TITLE:
ENLARGED ELECTRICAL PLANS

E-4.01