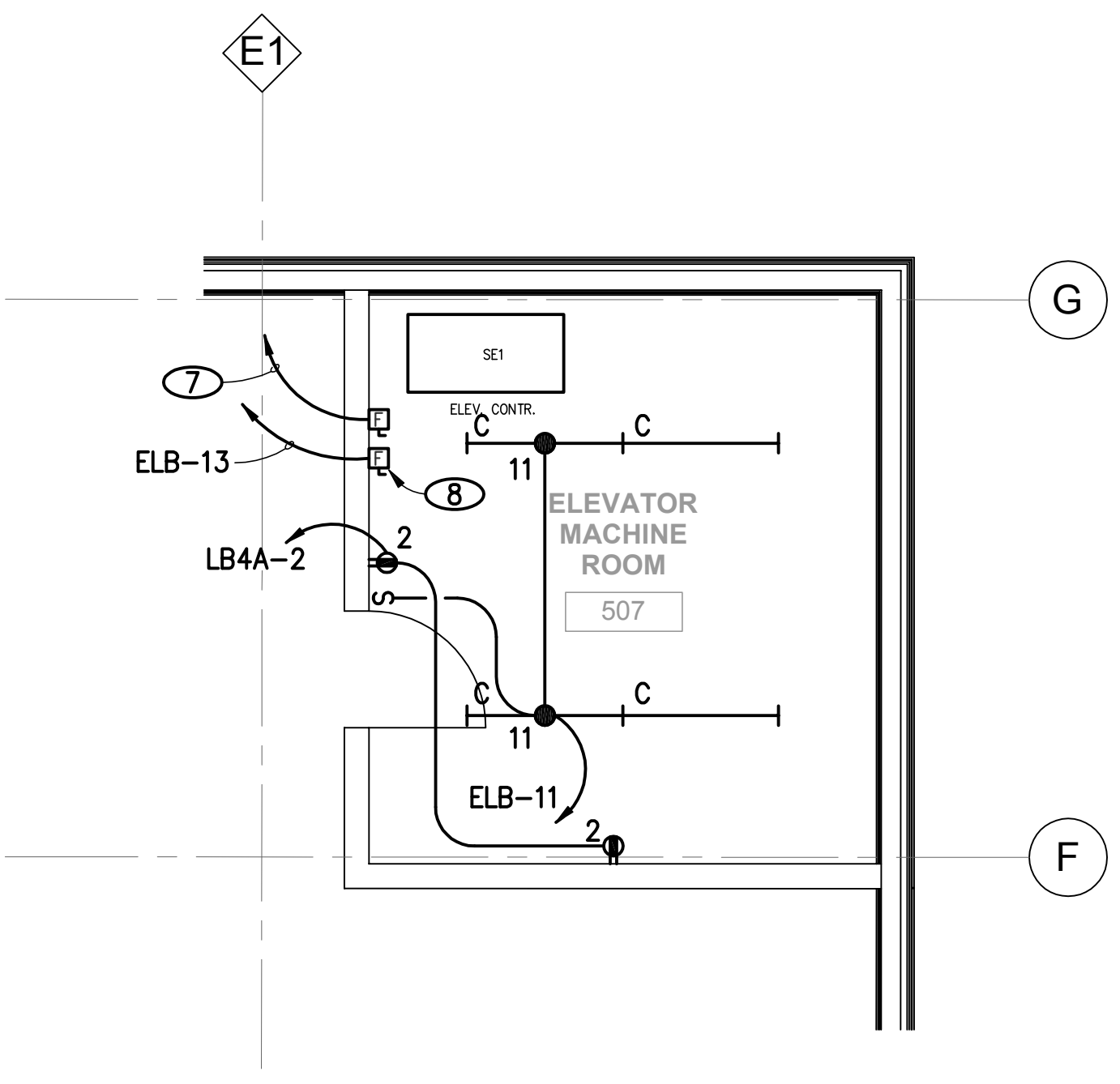


**CATERING KITCHEN - UPPER BALCONY LEVEL** (A) E4.04  
SCALE: 1/4" = 1'-0"



**ELEVATOR MACHINE ROOM - LEVEL 5** (B) E4.04  
SCALE: 1/4" = 1'-0"

**NOTICE**

- REFER TO KITCHEN EQUIPMENT DRAWINGS FOR EXACT ROUGH-IN LOCATIONS AND MOUNTING HEIGHTS.
- CONTRACTOR SHALL PROVIDE LIQUID-TITE FLEX FOR HARDWIRED KITCHEN EQUIPMENT.
- SEE FOOD SERVICE DRAWINGS FOR SODA, BEER REFRIGERATION AND LIQUOR LINE REQUIREMENTS.
- FURNISH AND INSTALL SWITCH, INTERCONNECTING CONDUIT, WIRING AND MAKE FINAL CONNECTIONS BETWEEN VENTILATOR HOOD AND CONTROL PANEL AS PER MANUFACTURER'S WIRING DIAGRAMS. SEE MECHANICAL DRAWINGS FOR ADDITIONAL CONTROL AND INTERLOCK REQUIREMENTS.
- CONTRACTOR SHALL INSTALL COOLER/FREEZER LIGHT FIXTURES AND PROVIDE INTERCONNECTING CONDUIT, WIRE, SEAL-OFFS, SEALANT AND MAKE FINAL CONNECTIONS TO SPLICE BOXES.
- PROVIDE ALL INTERCONNECTING CONDUITS AND WIRING BETWEEN COOLER/FREEZER, EVAPORATOR COIL, TERMINAL BLOCK, ROOM THERMOSTAT, LIQUID LINE SOLENOID VALVE, SWITCH AND COMPRESSOR CONTROL PANEL. MAKE FINAL CONNECTIONS AS PER THE MANUFACTURER'S WIRING DIAGRAMS.
- PROVIDE CONNECTIONS BETWEEN THE FIRE SUPPRESSION PANEL, GAS SOLENOID VALVE, RELAYS, ELECTRICAL SHUNT TRIPS, ETC. AS REQUIRED TO SHUT OFF POWER AND GAS SERVICE TO ALL EQUIPMENT LOCATED UNDER THE HOOD.

**NOTES**

- 20A, 120/208V, 1PH, NEMA 14-20 RECEPTACLE. PROVIDE CORD & PLUG SET.
- PROVIDE CORD & PLUG SET FOR EQUIPMENT.
- 30A, 120/208V, 1PH, NEMA 14-30 RECEPTACLE. VERIFY CONFIGURATION WITH EQUIPMENT FURNISHED.
- 15A, 208V, 1PH NEMA 6-15 RECEPTACLE. PROVIDE CORD & PLUG SET.
- 20A, 208V, 1PH, NEMA 6-20 RECEPTACLE.
- PROVIDE INTERCONNECTION TO REMOTE CONDENSOR.
- SEE SINGLE LINE DIAGRAM FOR FEEDER REQUIREMENTS.
- 30A, 2P, 3W, FUSE AT 15A LPJ, LABEL "ELEVATOR FAN/LIGHTS".

**THE SAENGER THEATRE RENEWAL PROJECT**  
142 North Rampart Street  
New Orleans, LA

Client  
Saenger Theatre Redevelopment Company  
200 West Loop South, Suite 1040  
Houston TX 77027

Architect  
**MARTINEZ+JOHNSON**  
ARCHITECTURE

1412 Eye St., NW  
Washington, DC 20005  
202.333.4480

Structural Engineer  
Shawn J. Franke, P.E.  
549 Heimer Road, San Antonio TX 78232  
210.979.7900

Theatre Consultant  
Schuler Shook  
123 Third Street North #210  
Minneapolis, MN 55401  
612.333.5550

Acoustical Engineer  
Akustiks  
93 North Main Street South  
Norwalk, CT 06884  
202.299.1904

MEP Engineer  
JBA Consulting Engineers, Inc.  
3525 N. Causeway Blvd. Suite 500  
Metairie, LA 70002  
504.830.0139

Civil Engineer  
Linfield, Hunter, & Junius, Inc.  
3608 18th Street Suite 200  
Metairie, LA 70002  
504.833.5300

Architectural Historian  
EHT Traceries, Inc.  
1121 Fifth Street NW  
Washington, DC 20001  
202.393.1199

THESE DRAWINGS, SPECIFICATIONS, AND OTHER DOCUMENTS, COLLECTIVELY, THE "DOCUMENTS" INCLUDING WITHOUT LIMITATION ELECTRONIC VERSIONS THEREOF AND THE IDEAS, DESIGNS, AND ARRANGEMENTS REPRESENTED THEREIN, ARE AND SHALL REMAIN THE PROPERTY OF MARTINEZ & JOHNSON ARCHITECTURE PC AS DEFINED BY APPLICABLE CONTRACTUAL AGREEMENTS ("THE AGREEMENTS") AND AS PROTECTED BY THE COPYRIGHT STATUTES OF THE UNITED STATES. USE OF THE DOCUMENTS SHALL BE STRICTLY LIMITED TO THE PROJECT FOR WHICH THEY WERE PREPARED AND DEVELOPED ("THE PROJECT") FOR THE TERMS OF THE AGREEMENTS. NO PART OF THE DOCUMENTS SHALL BE COPIED, DISCLOSED TO OTHERS, OR USED IN CONNECTION WITH ANY OTHER WORK OR PROJECT, OR BY ANY OTHER PERSONS FOR ANY PURPOSES, OTHER THAN THE COMPLETION OF THE PROJECT, WITHOUT THE SPECIFIC WRITTEN AUTHORIZATION OF MARTINEZ & JOHNSON ARCHITECTURE PC. THE DOING, GIVING, OPENING, OR VIEWING OF ELECTRONIC VERSIONS OF THE DOCUMENTS OR VISUAL CONTACT WITH ANY PRINTED FORM THEREOF SHALL CONSTITUTE CONCLUSIVE EVIDENCE OF ACCEPTANCE OF THESE RESTRICTIONS.

7502

DATE:	No.:	ISSUE:
02.19.10	1	PERMIT SET
04.02.10	2	GMP CONTRACT SET

DATE:	No.:	REVISION:
11.11.10		CONTRACT SET

SHEET TITLE:  
**ENLARGED ELECTRICAL PLANS**

**E-4.04**

P:\09\0904\saenger\Theatre\DRAWINGS\ELECTRICAL\090404\_E4.04.dwg, 11/18/2010 9:57:58 PM, dhg/mg