

**THE SAENGER
THEATRE RENEWAL
PROJECT**

142 North Rampart Street
New Orleans, LA

Client
Saenger Theatre Redevelopment Company
200 West Loop South, Suite
1040 Houston TX 77027

Architect
**MARTINEZ+JOHNSON
ARCHITECTURE**

1412 Eye St., NW
Washington, DC 20005
202.333.4480

Structural Engineer
Shawn J. Franke, P.E.
549 Heimer Road, San
Antonio TX 78232
210.979.7900

Theatre Consultant
Schuler Shook
123 Third Street North #210
Minneapolis, MN 55401
612.333.5550

Acoustical Engineer
Akustiks
93 North Main Street South
Norwalk, CT 06854
202.299.1904

MEP Engineer
JBA Consulting Engineers, Inc.
3525 N. Causeway Blvd. Suite
500 Metairie, LA 70002
504.830.0139

Civil Engineer
Linfield, Hunter, & Junius, Inc.
3608 18th Street Suite 200
Metairie, LA 70002
504.833.5300

Architectural Historian
EHT Traceries, Inc.
1121 Fifth Street NW
Washington, DC 20001
202.393.1199

7502

DATE: No.: REVISION:

02.19.10 1 PERMIT SET

04.02.10 2 GMP CONTRACT SET

DATE: No.: REVISION:

11.11.10 CONTRACT SET

SHEET TITLE:

BASEMENT LEVEL PLAN

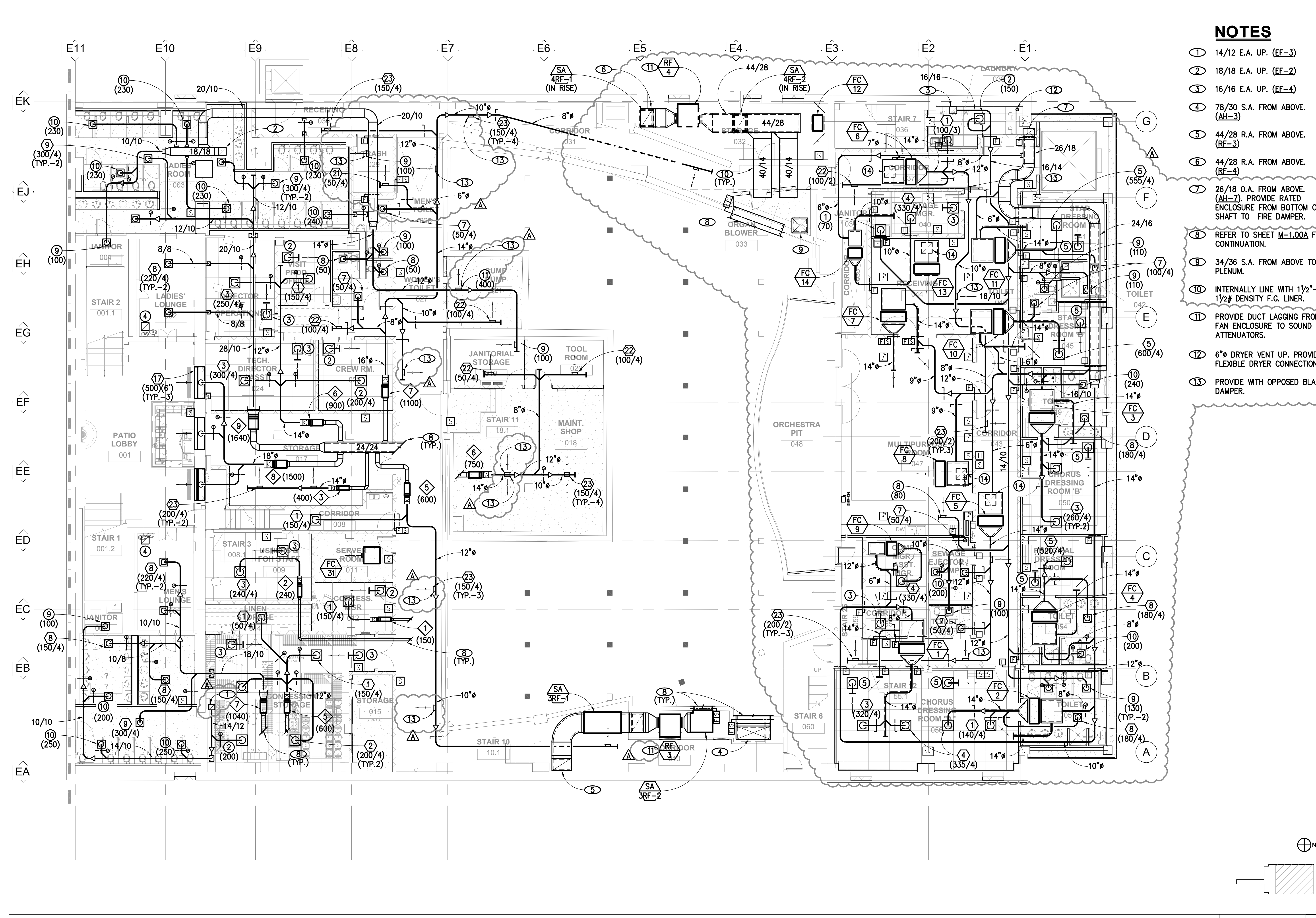
M-1.00

ISSUED FOR PERMIT

© 2010 M+J

NOTES

- 1 14/12 E.A. UP. (EF-3)
- 2 18/18 E.A. UP. (EF-2)
- 3 16/16 E.A. UP. (EF-4)
- 4 78/30 S.A. FROM ABOVE. (AH-3)
- 5 44/28 R.A. FROM ABOVE. (RF-3)
- 6 44/28 R.A. FROM ABOVE. (RF-4)
- 7 26/18 O.A. FROM ABOVE. (AH-7). PROVIDE RATED ENCLOSURE FROM BOTTOM OF SHAFT TO FIRE DAMPER.
- 8 REFER TO SHEET M-1.00A FOR CONTINUATION.
- 9 34/36 S.A. FROM ABOVE TO PLENUM.
- 10 INTERNALLY LINE WITH 1/2" - 1/2" DENSITY F.G. LINER.
- 11 PROVIDE DUCT LAGGING FROM FAN ENCLOSURE TO SOUND ATTENUATORS.
- 12 6" Ø DRYER VENT UP. PROVIDE FLEXIBLE DRYER CONNECTION.
- 13 PROVIDE WITH OPPOSED BLADE DAMPER.



BASEMENT LEVEL PLAN 1/8" = 1'-0" 1

ISSUED FOR PERMIT

09.0384

P:\03\0304\0304.dwg: TheatricalMechanical\Contract Set\0304_M-1.00.dwg, 11/18/2010 4:54:58 PM, emmsst