

**THE SAENGER  
THEATRE RENEWAL  
PROJECT**

142 North Rampart Street  
New Orleans, LA

Client  
Saenger Theatre Redevelopment Company  
200 West Loop South, Suite  
1040 Houston TX 77027

Architect  
**MARTINEZ+JOHNSON  
ARCHITECTURE**

1412 Eye St., NW  
Washington, DC 20005  
202.333.4480

Structural Engineer  
Shawn J. Franke, P.E.  
549 Heimer Road, San  
Antonio TX 78232  
210.979.7900

Theatre Consultant  
Schuler Shook  
123 Third Street North #210  
Minneapolis, MN 55401  
612.333.5555

Acoustical Engineer  
Akustiks  
93 North Main Street South  
Norwalk, CT 06854  
202.299.1904

MEP Engineer  
JBA Consulting Engineers, Inc.  
3525 N. Causeway Blvd. Suite  
500 Metairie, LA 70002  
504.830.0139

Civil Engineer  
Linfield, Hunter, & Junius, Inc.  
3608 18th Street Suite 200  
Metairie, LA 70002  
504.833.5300

Architectural Historian  
EHT Traceries, Inc.  
1121 Fifth Street NW  
Washington, DC 20001  
202.393.1199

**NOTES**

- 1 36/34 S.A. FROM ABOVE & DN. (AH-4)
- 2 30/18 O.A. FROM ABOVE & TRANS DN. 28/18 (AH-7)
- 3 20/46 S.A. FROM ABOVE & BRANCH 36/20. CONTINUE 24/20 DN. (AH-2)
- 4 26/26 S.A. FROM ABOVE & DN. (AH-3)
- 5 20/46 S.A. FROM ABOVE & DN. (AH-2)
- 6 P.O.C. TO EXISTING.
- 7 14/12 E.A. FROM BELOW & UP. (EF-3)
- 8 18/18 E.A. FROM BELOW & UP. (EF-2)
- 9 40/86 R.A. FROM BELOW & UP. (AH-1)
- 10 18/16 E.A. FROM BELOW & UP. (EF-4)
- 11 78/30 S.A. FROM ABOVE & DN. (AH-3)
- 12 REF. SHEET M-102 FOR CONT.
- 13 REF. SHEET M-107 FOR CONT.
- 14 18/18 S.A. UP (AH-4)
- 15 18/18 S.A. UP (AH-3)
- 16 26/26 S.A. FROM ABOVE & DN. (AH-4)
- 17 36/24 R.A. FROM BELOW & UP. (AH-2)
- 18 EXISTING DIFFUSER TO REMAIN.
- 19 EXISTING DIFFUSER. BALANCE DAMPER TO LISTED CFM.
- 20 INTERNALLY LINE WITH 1/2" - 1/2# DENSITY F.G. LINER.
- 21 DUCTWORK AND EQUIPMENT LOCATED IN SUPPLY PLENUM WHICH SERVES THE LOBBY SHALL BE ENCLOSED IN DRYWALL SOUND ENCLOSURE. COORDINATE REQUIREMENTS WITH GENERAL CONTRACTOR. PROVIDE MANUFACTURER RECOMMENDED CLEARANCES AND ACCESS TO EQUIPMENT AND DAMPERS.
- 22 GENERAL CONTRACTOR TO PROVIDE DRYWALL ENCLOSURE FOR DUCTWORK.
- 23 REFER TO SHEET M-1.02 REFER TO DETAIL 6 M-2.00

THESE DRAWINGS, SPECIFICATIONS, AND OTHER DOCUMENTS, COLLECTIVELY, THE "DOCUMENTS", INCLUDING WITHOUT LIMITATION ELECTRONIC VERSIONS THEREOF AND THE IDEAS, DESIGNS, AND ARRANGEMENTS REPRESENTED THEREBY, ARE AND SHALL REMAIN THE PROPERTY OF MARTINEZ & JOHNSON ARCHITECTURE, P.C. AS DEFINED BY THE CONTRACTUAL AGREEMENTS ("THE AGREEMENTS") AND AS PROTECTED BY THE COPYRIGHT STATUTES OF THE UNITED STATES. USE OF THE DOCUMENTS SHALL BE STRICTLY LIMITED TO THE PROJECT FOR WHICH THEY WERE PREPARED AND DEVELOPED ("THE PROJECT") FOR THE TERMS OF THE AGREEMENTS. NO PART OF THE DOCUMENTS SHALL BE COPIED, DISCLOSED TO OTHERS, OR USED IN CONNECTION WITH ANY OTHER WORK OR PROJECT, OR BY ANY OTHER PERSONS FOR ANY PURPOSES, OTHER THAN THE COMPLETION OF THE PROJECT, WITHOUT THE SPECIFIC WRITTEN AUTHORIZATION OF MARTINEZ & JOHNSON ARCHITECTURE, P.C. THE COPYING, OPENING, OR VIEWING OF ELECTRONIC VERSIONS OF THE DOCUMENTS OR VISUAL CONTACT WITH ANY PRINTED FORM THEREOF SHALL CONSTITUTE CONCLUSIVE EVIDENCE OF ACCEPTANCE OF THESE RESTRICTIONS.

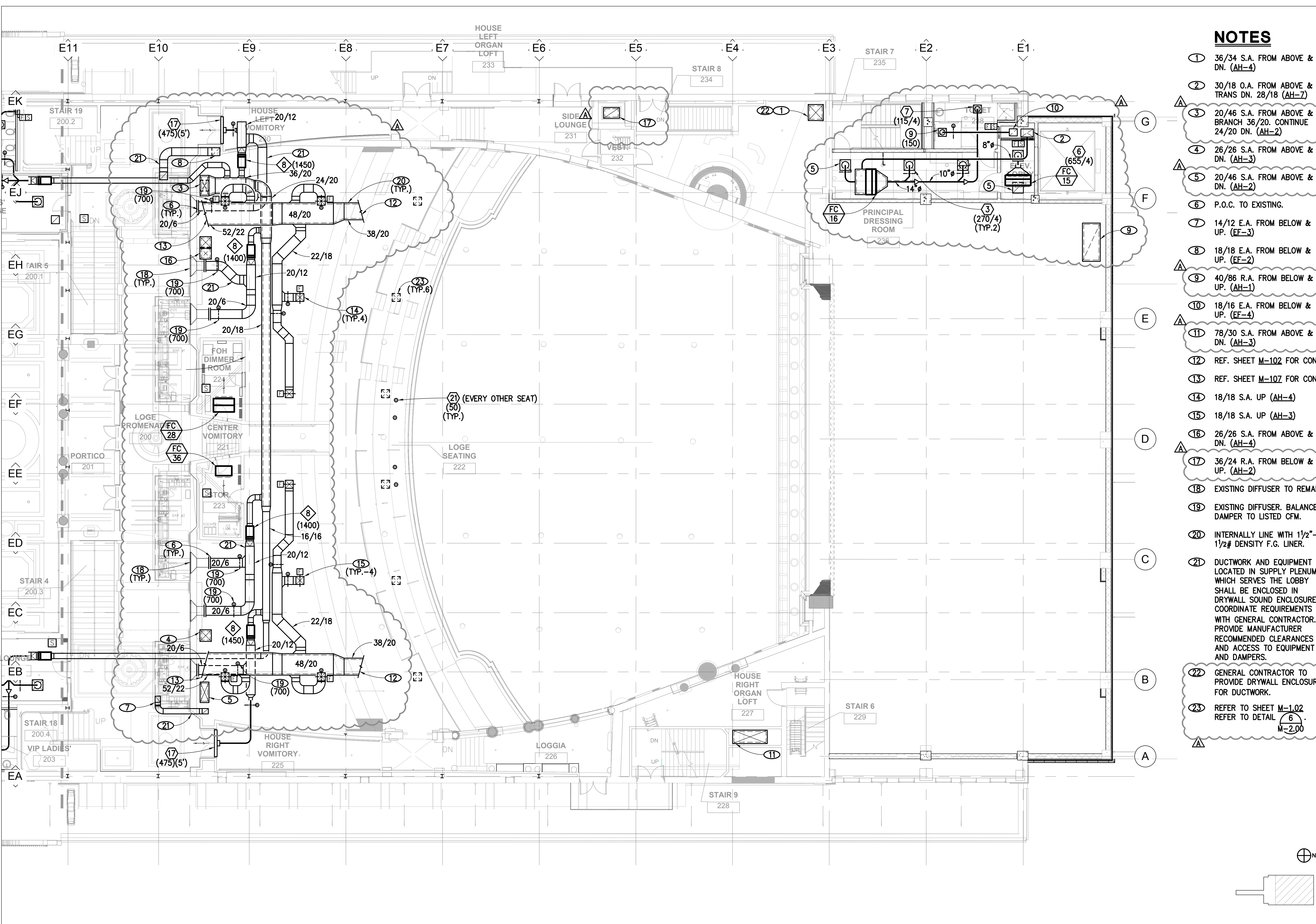
7502

DATE:	No.:	ISSUE:
02.19.10	1	PERMIT SET
04.02.10	2	GMP CONTRACT SET

DATE:	No.:	REVISION:
11.11.10		CONTRACT SET

SHEET TITLE:  
**THEATRE - LOGE LEVEL PLAN**

**M-1.05**



THEATRE - LOGE LEVEL PLAN 1/8" = 1'-0" 1

ISSUED FOR PERMIT

© 2010 M+J

P:\09.0304 Saenger Theatre\DRAWINGS\Mechanical\Contract Set\090304\_M-105.dwg, 11/19/2010 4:44:27 PM, emust