

**THE SAENGER
THEATRE RENEWAL
PROJECT**

142 North Rampart Street
New Orleans, LA

Client
Saenger Theatre Redevelopment Company
200 West Loop South, Suite
1040 Houston TX 77027

Architect
**MARTINEZ+JOHNSON
ARCHITECTURE**

1412 Eye St., NW
Washington, DC 20005
202.333.4480

Structural Engineer
Shawn J. Franke, P.E.
549heimer Road San
Antonio TX 78232
210.979.7900

Theatre Consultant
Schuler Shook
123 Third Street North #210
Minneapolis, MN 55401
612.333.5959

Acoustical Engineer
Akustiks
93 North Main Street South
Norwalk, CT 06584
202.299.1904

MEP Engineer
JBA Consulting Engineers, Inc.
3525 N. Causeway Blvd. Suite
500 Metairie, LA 70002
504.830.0139

Civil Engineer
Linfield, Hunter, & Junius, Inc.
3608 18th Street Suite 200
Metairie, LA 70002
504.333.5300

Architectural Historian
EHT Traceries, Inc.
1121 Fifth Street NW
Washington, DC 20001
202.393.1199

7502

DATE: No.: ISSUE:

02.19.10 1 PERMIT SET

04.02.10 2 GMP CONTRACT SET

DATE: No.: REVISION:

11.11.10 CONTRACT SET

SHEET TITLE:

ARCADE - FOLLOW SPOT

ROOM LEVEL PLAN -

PIPING

M-1.30

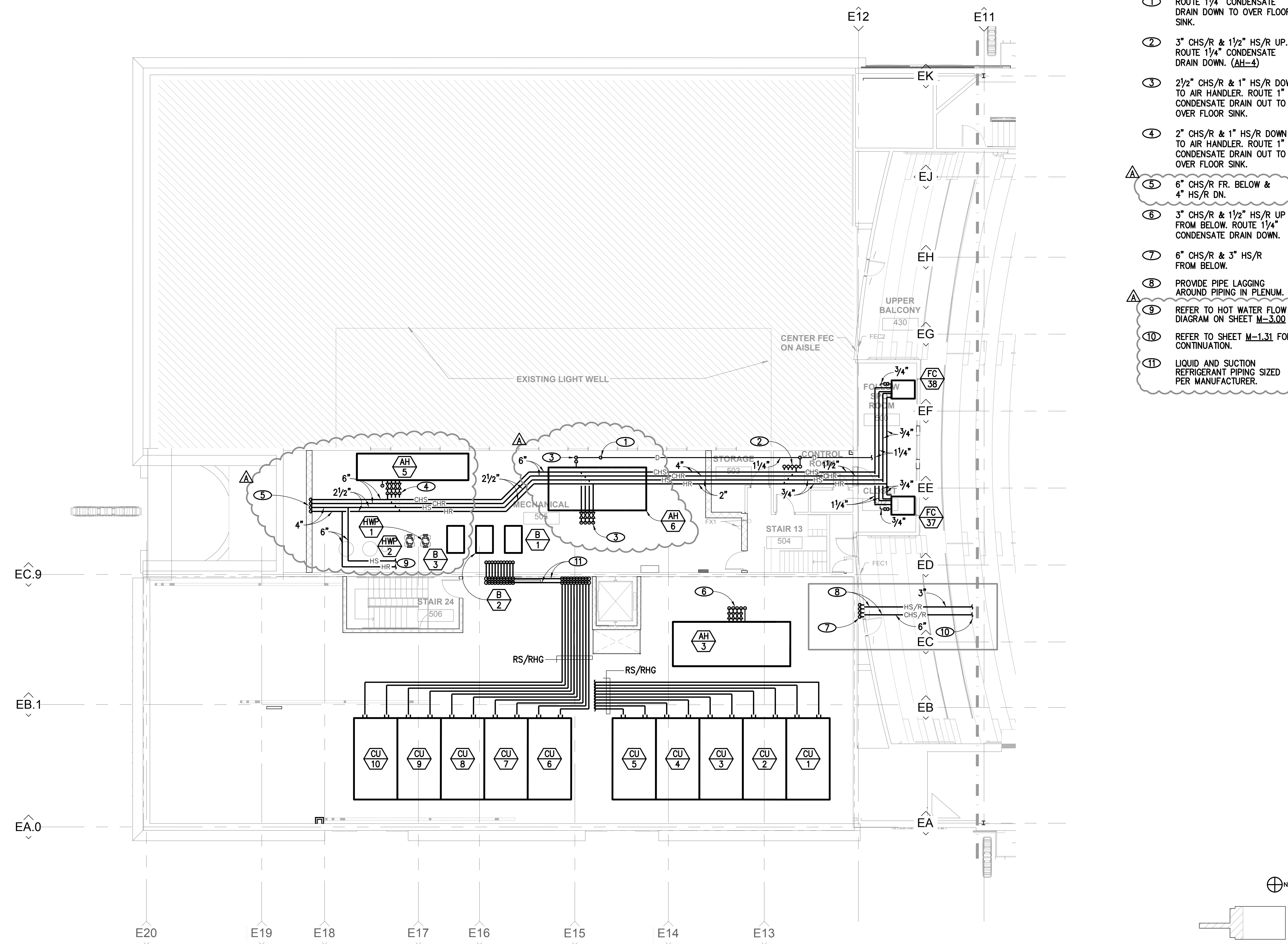
1

ISSUED FOR PERMIT

© 2010 M+J

NOTES

- ① ROUTE 1/4" CONDENSATE DRAIN DOWN TO OVER FLOOR SINK.
- ② 3" CHS/R & 1/2" HS/R UP. ROUTE 1/4" CONDENSATE DRAIN DOWN. (AH-4)
- ③ 2 1/2" CHS/R & 1" HS/R DOWN TO AIR HANDLER. ROUTE 1" CONDENSATE DRAIN OUT TO OVER FLOOR SINK.
- ④ 2" CHS/R & 1" HS/R DOWN TO AIR HANDLER. ROUTE 1" CONDENSATE DRAIN OUT TO OVER FLOOR SINK.
- ⑤ 6" CHS/R FR. BELOW & 4" HS/R DN.
- ⑥ 3" CHS/R & 1/2" HS/R UP FROM BELOW. ROUTE 1/4" CONDENSATE DRAIN DOWN.
- ⑦ 6" CHS/R & 3" HS/R FROM BELOW.
- ⑧ PROVIDE PIPE LAGGING AROUND PIPING IN PLENUM.
- ⑨ REFER TO HOT WATER FLOW DIAGRAM ON SHEET M-3.00
- ⑩ REFER TO SHEET M-1.31 FOR CONTINUATION.
- ⑪ LIQUID AND SUCTION REFRIGERANT PIPING SIZED PER MANUFACTURER.



ARCADE - FOLLOW SPOT ROOM LEVEL PLAN - PIPING 1/8" = 1'-0" 1

ISSUED FOR PERMIT

© 2010 M+J

P:\03\034 Saenger Theatre\DRAWINGS\Mechanical\Contract Set\030304_M-1.30.dwg, 11/19/2010 4:42:51 PM, smast