

**THE SAENGER  
THEATRE RENEWAL  
PROJECT**

142 North Rampart Street  
New Orleans, LA

Client  
Saenger Theatre Redevelopment Company  
200 West Loop South, Suite  
1040 Houston TX 77027

Architect  
**MARTINEZ+JOHNSON  
ARCHITECTURE**

1412 Eye St., NW  
Washington, DC 20005  
202.333.4480

Structural Engineer  
Shawn J. Franke, P.E.  
549 Heimer Road, San  
Antonio TX 78232  
210.979.7900

Theatre Consultant  
Schuler Shook  
123 Third Street North #210  
Minneapolis, MN 55401  
612.333.5659

Acoustical Engineer  
Akustiks  
93 North Main Street South  
Norwalk, CT 06884  
202.299.1904

MEP Engineer  
JBA Consulting Engineers, Inc.  
3525 N. Causeway Blvd. Suite  
500 Metairie, LA 70002  
504.830.0139

Civil Engineer  
Linfield, Hunter, & Junius, Inc.  
3608 18th Street Suite 200  
Metairie, LA 70002  
504.833.5300

Architectural Historian  
EHT Traceries, Inc.  
1121 Fifth Street NW  
Washington, DC 20001  
202.393.1199

7502

DATE: No.: ISSUE:

02.19.10 1 PERMIT SET

04.02.10 2 GMP CONTRACT SET

DATE: No.: REVISION:

11.11.10 CONTRACT SET

SHEET TITLE:

THEATRE - LOGE LEVEL PLAN

P-1.05

09.09.14

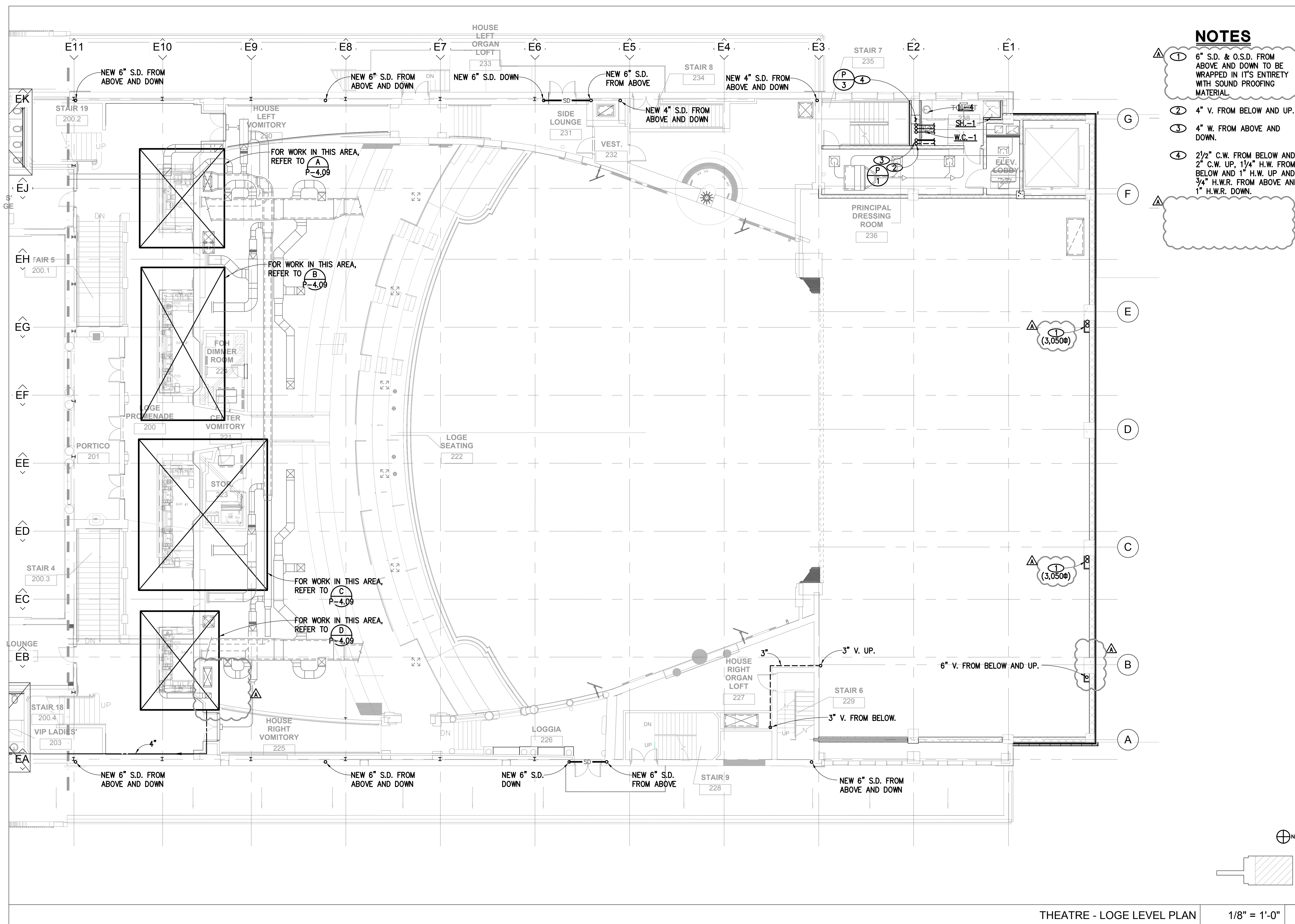
1

ISSUED FOR PERMIT

© 2010 M+J

**NOTES**

- ① 6" S.D. & O.S.D. FROM ABOVE AND DOWN TO BE WRAPPED IN ITS ENTIRETY WITH SOUND PROOFING MATERIAL.
- ② 4" V. FROM BELOW AND UP.
- ③ 4" W. FROM ABOVE AND DOWN.
- ④ 2 1/2" C.W. FROM BELOW AND 2" C.W. UP, 1 1/4" H.W. FROM BELOW AND 1" H.W. UP AND 3/4" H.W.R. FROM ABOVE AND 1" H.W.R. DOWN.



THEATRE - LOGE LEVEL PLAN 1/8" = 1'-0" 1

ISSUED FOR PERMIT

© 2010 M+J