

**THE SAENGER
THEATRE RENEWAL
PROJECT**

142 North Rampart Street
New Orleans, LA

Client
Saenger Theatre Redevelopment Company
200 West Loop South, Suite
1040 Houston TX 77027

Architect
**MARTINEZ+JOHNSON
ARCHITECTURE**

1412 Eye St., NW
Washington, DC 20005
202.333.4480

Structural Engineer
Shawn J. Franke, P.E.
549 Heimer Road, San
Antonio TX 78232
210.979.7900

Theatre Consultant
Schuler Shook
123 Third Street North #210
Minneapolis, MN 55401
612.333.5659

Acoustical Engineer
Akustiks
93 North Main Street South
Norwalk, CT 06584
202.299.1904

MEP Engineer
JBA Consulting Engineers, Inc.
3525 N. Causeway Blvd., Suite
500 Metairie, LA 70002
504.830.0139

Civil Engineer
Linfield, Hunter, & Junius, Inc.
3608 18th Street Suite 200
Metairie, LA 70002
504.833.5300

Architectural Historian
EHT Traceries, Inc.
1121 Fifth Street NW
Washington, DC 20001
202.393.1199

NOTES

- ① 2" V. UP.
- ② 2" W. FROM ABOVE.
- ③ 4" W. FROM ABOVE.
- ④ 4" W. UP TO C.O. ABOVE.
- ⑤ 2" F.D. ABOVE.
- ⑥ 4" F.D. ABOVE.
- ⑦ 4" E.S. ABOVE.
- ⑧ 2" FUNNEL DRAIN ABOVE.
- ⑨ 2" GR. FROM ABOVE.
- ⑩ 3" V., 2 1/2" C.W. AND 3/4" H.W. FROM BELOW AND UP AND 3/4" H.W.R. FROM ABOVE AND DOWN.
- ⑪ 4" V., 4" C.W. AND 1" H.W.R. FROM BELOW AND UP, 2" H.W. AND 2" M.G. FROM ABOVE AND DOWN AND 3" W. DOWN.
- ⑫ 3" M.G., 6" V. AND 1 1/2" H.W.R. UP AND 4" C.W. AND 2 1/2" H.W. FROM ABOVE. COORDINATE ROUTING WITH DUCTWORK AND OFFSET AS REQUIRED TO AVOID CONFLICTS.
- ⑬ 2" C.W. AND 3/4" H.W. UP AND 3/4" H.W.R. FROM ABOVE.
- ⑭ 4" V. FROM BELOW AND UP.
- ⑮ 4" W. DOWN.
- ⑯ 3" W. FROM ABOVE.
- ⑰ 2" E.S. ABOVE.
- ⑱ 3" E.S. ABOVE.
- ⑲ 3" W. DOWN.
- ⑳ 6" S.D. FROM ABOVE AND DOWN IN FURRED WALL.
- ㉑ 4" S.D. FROM ABOVE AND DOWN.

THESE DRAWINGS, SPECIFICATIONS, AND OTHER DOCUMENTS, COLLECTIVELY, THE "DOCUMENTS", INCLUDING WITHOUT LIMITATION ELECTRONIC VERSIONS THEREOF AND THE IDEAS, DESIGNS, AND ARRANGEMENTS REPRESENTED THEREBY, ARE AND SHALL REMAIN THE PROPERTY OF MARTINEZ+JOHNSON ARCHITECTURE, P.C. AS REPRESENTED BY APPLICABLE CONTRACTUAL AGREEMENTS ("THE AGREEMENTS") AND AS PROTECTED BY THE COPYRIGHT STATUTES OF THE UNITED STATES. USE OF THE DOCUMENTS SHALL BE STRICTLY LIMITED TO THE PROJECT FOR WHICH THEY WERE PREPARED AND DEVELOPED ("THE PROJECT") FOR THE TERMS OF THE AGREEMENTS. NO PART OF THE DOCUMENTS SHALL BE COPIED, DISCLOSED TO OTHERS, OR USED IN CONNECTION WITH ANY OTHER WORK OR PROJECT, OR BY ANY OTHER PERSONS FOR ANY PURPOSES, OTHER THAN THE COMPLETION OF THE PROJECT, WITHOUT THE SPECIFIC WRITTEN AUTHORIZATION OF MARTINEZ+JOHNSON ARCHITECTURE, P.C. THE COPYING, OPENING, OR VIEWING OF ELECTRONIC VERSIONS OF THE DOCUMENTS OR VISUAL CONTACT WITH ANY PRINTED FORM THEREOF SHALL CONSTITUTE CONCLUSIVE EVIDENCE OF ACCEPTANCE OF THESE RESTRICTIONS.

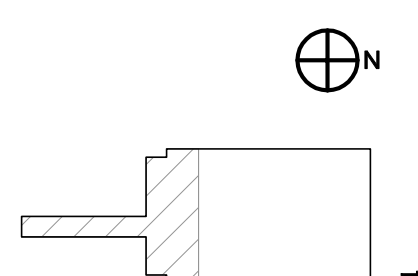
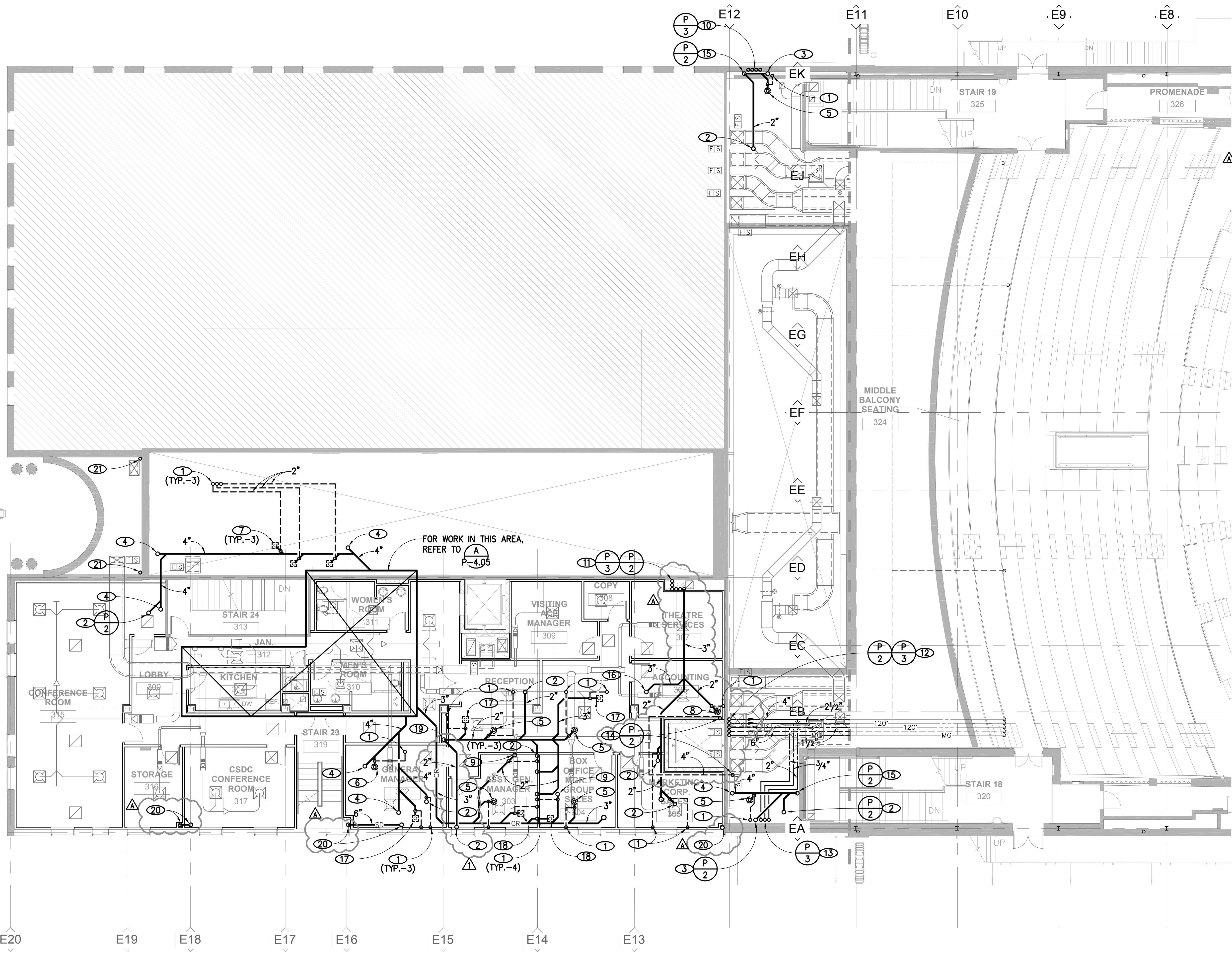
7502

DATE:	No.:	ISSUE:
02.19.10	1	PERMIT SET
04.02.10	2	GMP CONTRACT SET

DATE:	No.:	REVISION:
08.03.10	1	DOH REVISION
11.11.10	2	CONTRACT SET

SHEET TITLE:
**ARCADE - MIDDLE
BALCONY LEVEL PLAN**

P-1.06



ARCADE - MIDDLE BALCONY LEVEL PLAN

1/8" = 1'-0"

1

ISSUED FOR PERMIT

© 2010 M+J

P:\09.0394\saenger\Theatre\DRAWINGS\PLUMBING\09.0394_P-106.dwg 11/19/2010 3:37:11 PM Johnson