

**THE SAENGER
THEATRE RENEWAL
PROJECT**

142 North Rampart Street
New Orleans, LA

Client
Saenger Theatre Redevelopment Company
200 West Loop South, Suite
1040 Houston TX 77027

Architect
**MARTINEZ+JOHNSON
ARCHITECTURE**

1412 Eye St., NW
Washington, DC 20005
202.333.4480

Structural Engineer
Shawn J. Franke, P.E.
549heimer Road, San
Antonio TX 78232
210.979.7900

Theatre Consultant

Schuler Shook
123 Third Street North #210
Minneapolis, MN 55401
612.333.5659

Acoustical Engineer
Akustiks
93 North Main Street South
Norwalk, CT 06584
202.299.1904

MEP Engineer
JBA Consulting Engineers, Inc.
3525 N. Causeway Blvd. Suite
500 Metairie, LA 70002
504.830.0139

Civil Engineer
Linfield, Hunter, & Junius, Inc.
3608 18th Street Suite 200
Metairie, LA 70002
504.333.5300

Architectural Historian
EHT Tracerics, Inc.
1121 Fifth Street NW
Washington, DC 20001
202.393.1199

NOTES

- 1 2" V. UP.
- 2 3" V. UP.
- 3 6" V. UP.
- 4 2" V. FROM BELOW.
- 5 3" V. FROM BELOW.
- 6 2" W. FROM ABOVE.
- 7 4" W. FROM ABOVE.
- 8 4" W. UP TO C.O. ABOVE.
- 9 3" E.D. ABOVE.
- 10 4" E.S. ABOVE.
- 11 4" W. DOWN.
- 12 3" M.G., 6" V. AND 1 1/2" H.W.R. FROM BELOW AND 4" C.W. AND 2 1/2" H.W. DOWN. COORDINATE ROUTING WITH DUCTWORK AND OFFSET AS REQUIRED TO AVOID CONFLICTS.
- 13 4" V. FROM BELOW, 4" C.W. AND 1" H.W.R. FROM BELOW AND 2" H.W. AND 2" M.G. DOWN.
- 14 3" M.G., 3" C.W. AND 2" H.W.R. UP AND 2 1/2" H.W. FROM ABOVE.
- 15 1" C.W. AND 3/4" H.W. UP AND 3/4" H.W.R. FROM ABOVE.
- 16 2" W. DOWN WITH W.C.O., 2" V. UP AND 3/4" H. & C.W. DOWN TO FAUCET AT SINK. TEE 1/2" C.W. TO L.M.B.-1 FOR REFRIGERATOR AND TEE 1/2" H.W. TO D.W.-1.
- 17 3" V., 1 1/2" C.W., 1 1/2" H.W. AND 3/4" H.W.R. TO KITCHEN. REFER TO ENLARGED PLAN (A) FOR CONTINUATION. P-4.10
- 18 3/4" C.W. DOWN WITH S.O.V. TO ELECTRONIC TRAP PRIMER MANIFOLD EQUAL TO P.P.P. INC. "PRIME-TIME" #PT-6 WITH 1/2" C.W. PRIMING LINES DOWN AND CONNECT TO P-TRAP OF EACH F.S.
- 19 4" V. UP AND V.T.R.
- 20 6" V. UP AND V.T.R.
- 21 6" S.D. FROM R.D. ABOVE AND DOWN IN FURRED WALL.
- 22 6" S.D. FROM R.D. ABOVE.
- 23 6" S.D. DOWN IN FURRED WALL.
- 24 6" S.D. FROM ABOVE.
- 25 PROVIDE SHEET METAL DRAIN PAN UNDER ALL S.D. PIPING OVER ELECTRICAL EQUIPMENT AND PIPE DRAIN TO OVER NEAREST F.S.
- 26 4" S.D. FROM R.D. ABOVE AND DOWN.

THESE DRAWINGS, SPECIFICATIONS, AND OTHER DOCUMENTS, COLLECTIVELY, THE "DOCUMENTS", INCLUDING WITHOUT LIMITATION ELECTRONIC VERSIONS THEREOF AND THE IDEAS, DESIGNS, AND ARRANGEMENTS REPRESENTED THEREBY, ARE AND SHALL REMAIN THE PROPERTY OF MARTINEZ & JOHNSON ARCHITECTURE, P.C. AS DEFINED BY APPLICABLE CONTRACTUAL AGREEMENTS ("THE AGREEMENTS") AND AS PROTECTED BY THE COPYRIGHT STATUTES OF THE UNITED STATES. USE OF THE DOCUMENTS SHALL BE STRICTLY LIMITED TO THE PROJECT FOR WHICH THEY WERE PREPARED AND DEVELOPED ("THE PROJECT") FOR THE TERMS OF THE AGREEMENTS. NO PART OF THE DOCUMENTS SHALL BE COPIED, DISCLOSED TO OTHERS, OR USED IN CONNECTION WITH ANY OTHER WORK OR PROJECT, OR BY ANY OTHER PERSONS FOR ANY PURPOSES, OTHER THAN THE COMPLETION OF THE PROJECT, WITHOUT THE SPECIFIC WRITTEN AUTHORIZATION OF MARTINEZ & JOHNSON ARCHITECTURE, P.C. THE DOING, GAINING, OPENING, OR VIEWING OF ELECTRONIC VERSIONS OF THE DOCUMENTS OR VISUAL CONTACT WITH ANY PRINTED FORM THEREOF SHALL CONSTITUTE CONCLUSIVE EVIDENCE OF ACCEPTANCE OF THESE RESTRICTIONS.

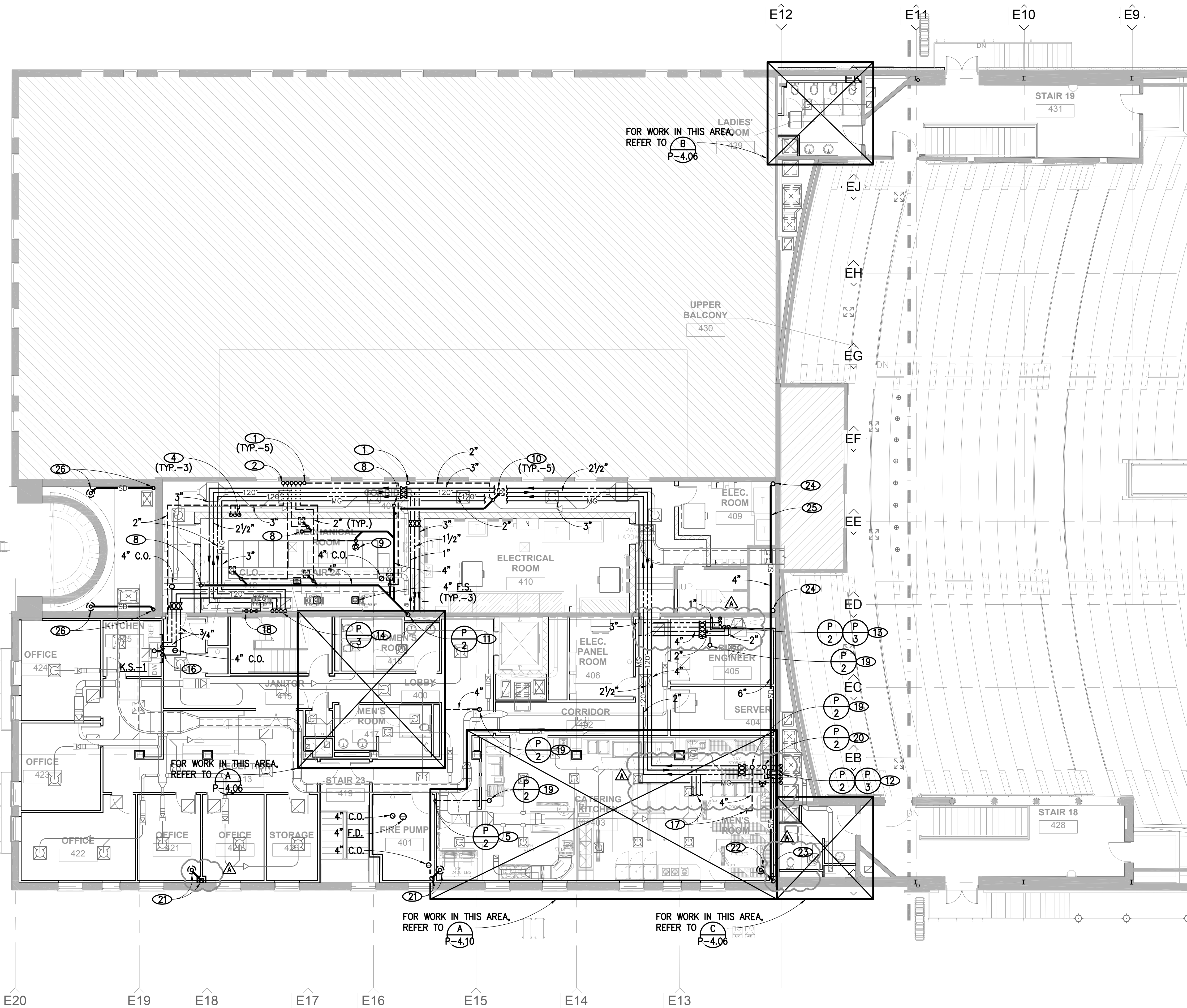
7502

| DATE: | No.: | ISSUE: |
|----------|------|------------------|
| 02.19.10 | 1 | PERMIT SET |
| 04.02.10 | 2 | GMP CONTRACT SET |

| DATE: | No.: | REVISION: |
|----------|------|--------------|
| 11.11.10 | | CONTRACT SET |

SHEET TITLE:
ARCADE - UPPER
BALCONY LEVEL PLAN

P-1.08



ARCADE - UPPER BALCONY LEVEL PLAN

1/8" = 1'-0"

1

ISSUED FOR PERMIT