

**THE SAENGER
THEATRE RENEWAL
PROJECT**

142 North Rampart Street
New Orleans, LA

Client
Saenger Theatre Redevelopment Company
200 West Loop South, Suite
1040 Houston TX 77027

Architect
MARTINEZ+JOHNSON
ARCHITECTURE

1412 Eye St., NW
Washington, DC 20005
202.333.4480

Structural Engineer
Shawn J. Franke, P.E.
549heimer Road San
Antonio TX 78232
210.979.7900

Theatre Consultant
Schuler Shook
123 Third Street North #210
Minneapolis, MN 55401
612.333.5659

Acoustical Engineer
Akustiks
93 North Main Street South
Norwalk, CT 06584
202.299.1904

MEP Engineer
JBA Consulting Engineers, Inc.
3525 N. Causeway Blvd. Suite
500 Metairie, LA 70002
504.830.0139

Civil Engineer
Linfield, Hunter, & Junius, Inc.
3608 18th Street Suite 200
Metairie, LA 70002
504.833.5300

Architectural Historian
EHT Traceries, Inc.
1121 Fifth Street NW
Washington, DC 20001
202.393.1199

THESE DRAWINGS, SPECIFICATIONS, AND OTHER DOCUMENTS, COLLECTIVELY, THE "DOCUMENTS", INCLUDING WITHOUT LIMITATION ELECTRONIC VERSIONS THEREOF AND THE IDEAS, DESIGNS, AND ARRANGEMENTS REPRESENTED THEREBY, ARE AND SHALL REMAIN THE PROPERTY OF MARTINEZ & JOHNSON ARCHITECTURE PC AS DEFINED BY APPLICABLE CONTRACTUAL AGREEMENTS ("THE AGREEMENTS") AND AS PROTECTED BY THE COPYRIGHT STATUTES OF THE UNITED STATES. USE OF THE DOCUMENTS SHALL BE STRICTLY LIMITED TO THE PROJECT FOR WHICH THEY WERE PREPARED AND DEVELOPED ("THE PROJECT") FOR THE TERM OF THE AGREEMENTS. NO PART OF THE DOCUMENTS SHALL BE COPIED, DISCLOSED TO OTHERS, OR USED IN CONNECTION WITH ANY OTHER WORK OR PROJECT, OR BY ANY OTHER PERSONS FOR ANY PURPOSES OTHER THAN THE COMPLETION OF THE PROJECT, WITHOUT THE SPECIFIC WRITTEN AUTHORIZATION OF MARTINEZ & JOHNSON ARCHITECTURE PC. THE BORROWING, OPENING, OR VIEWING OF ELECTRONIC VERSIONS OF THE DOCUMENTS OR VISUAL CONTACT WITH ANY PRINTED FORM THEREOF SHALL CONSTITUTE CONCLUSIVE EVIDENCE OF ACCEPTANCE OF THESE RESTRICTIONS.

7502

DATE:	No.:	ISSUE:
02.19.10	1	PERMIT SET
04.02.10	2	GMP CONTRACT SET

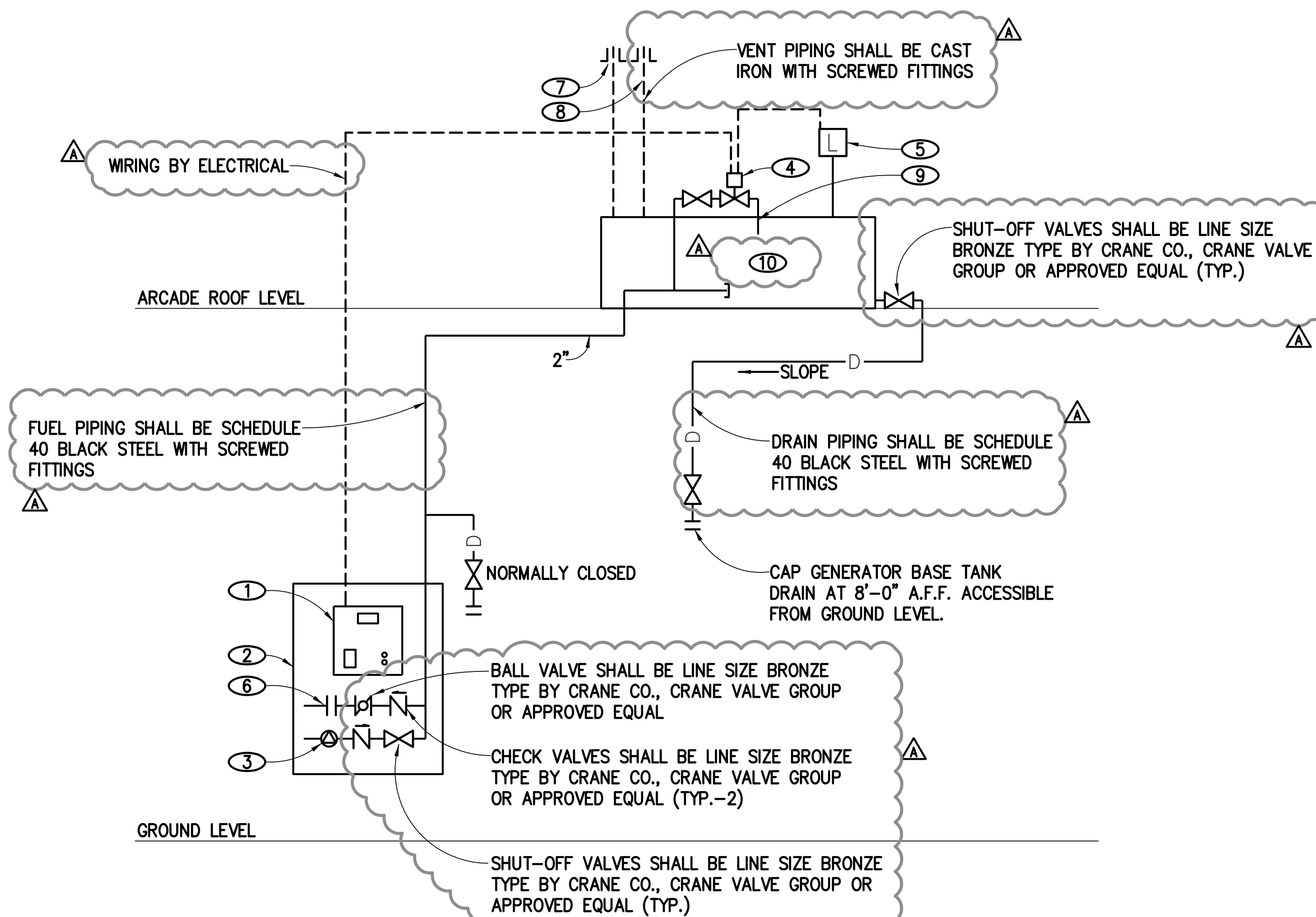
DATE:	No.:	REVISION:
11.11.10		CONTRACT SET

SHEET TITLE:
DETAILS

P-6.04

NOTES

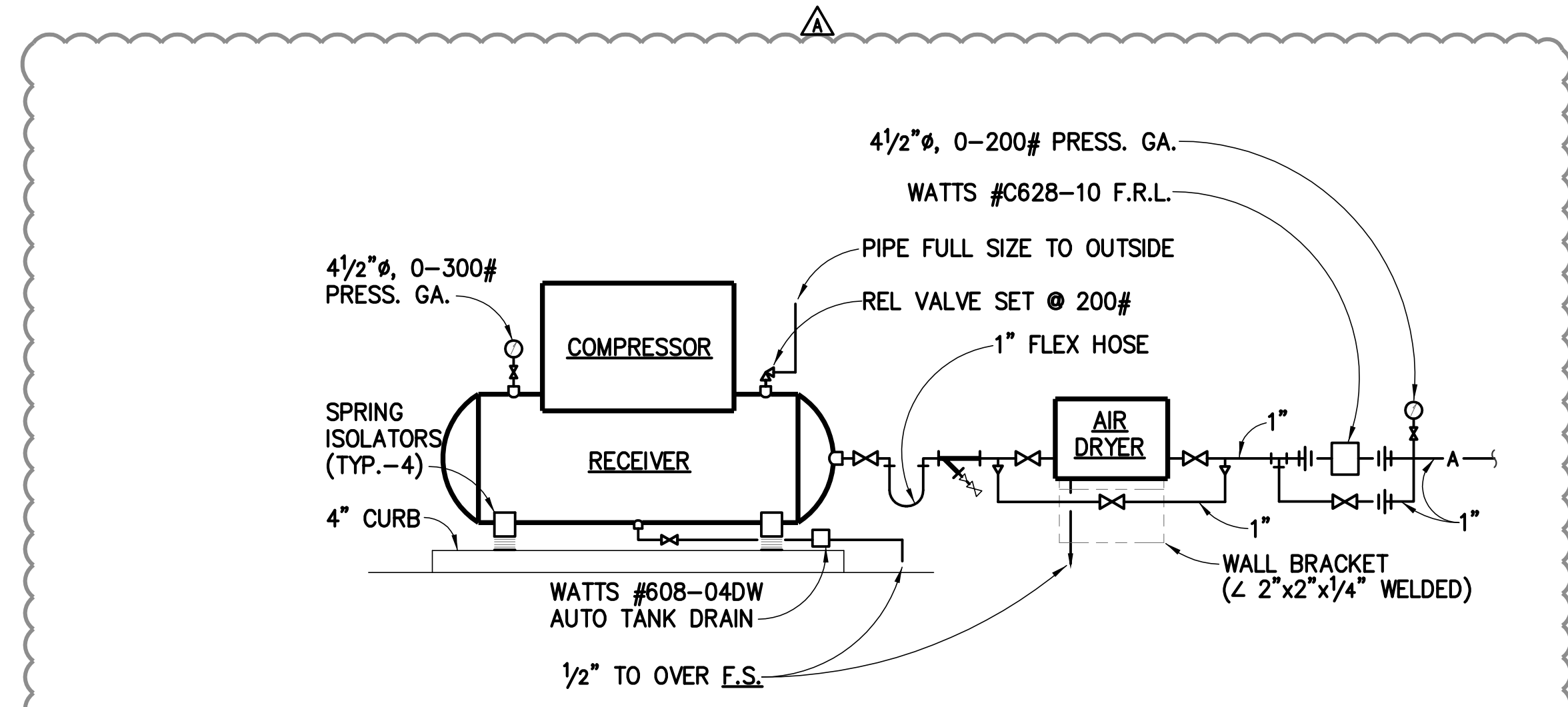
- ① GENERATOR FUELING SYSTEM CONTROL PANEL WITH LED ALARM LIGHT FOR HIGH LEVEL TANK FILL.
- ② FILL STATION CABINET WITH CONTAINMENT BASKIN LOCATED AT 1101 BUILDING ON GROUND LEVEL - REFER TO SHEET P-1.01 FOR EXACT LOCATION. CABINET SHALL BE STAINLESS STEEL, WATER TIGHT WITH LOCKABLE HINGED COVER.
- ③ HAND PUMP ASSEMBLY.
- ④ LINE SIZE BRONZE ELECTRICALLY ACTUATED CONTROL VALVE BY CRANE CO., CRANE VALVE GROUP OR APPROVED EQUAL. VALVE SHALL CLOSE WHEN TANK SENSOR INDICATES TANK IS AT FILLED LEVEL.
- ⑤ GENERATOR BASE TANK LEVEL SENSOR - REFER TO ELECTRICAL DRAWINGS. PROVIDE TIE-IN AUXILIARY CONTACTS AND ALARM.
- ⑥ HOSE ADAPTER WITH CAP.
- ⑦ PROVIDE FULL-SIZE RELIEF VENT FROM DAY TANK WITH SPARK ARRESTOR VENT CAP. REFER TO MECHANICAL DWGS FOR EXACT ROUTING.
- ⑧ PROVIDE FULL-SIZE EMERGENCY VENT FROM DAY TANK WITH SPARK ARRESTOR VENT CAP. REFER TO MECHANICAL DWGS FOR EXACT ROUTING.
- ⑨ FUEL FILL DROP TUBE WITH ANTI-SIPHON HOLE.
- ⑩ GENERATOR BASE TANK PROVIDED WITH GENERATOR.



GENERATOR REMOTE FUELING PROCESS DIAGRAM

NO SCALE

1
P-6.04



AIR COMPRESSOR PIPING DETAIL

NO SCALE

2
P-6.04