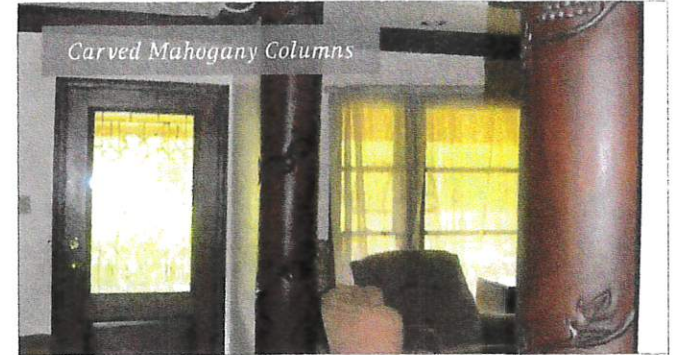
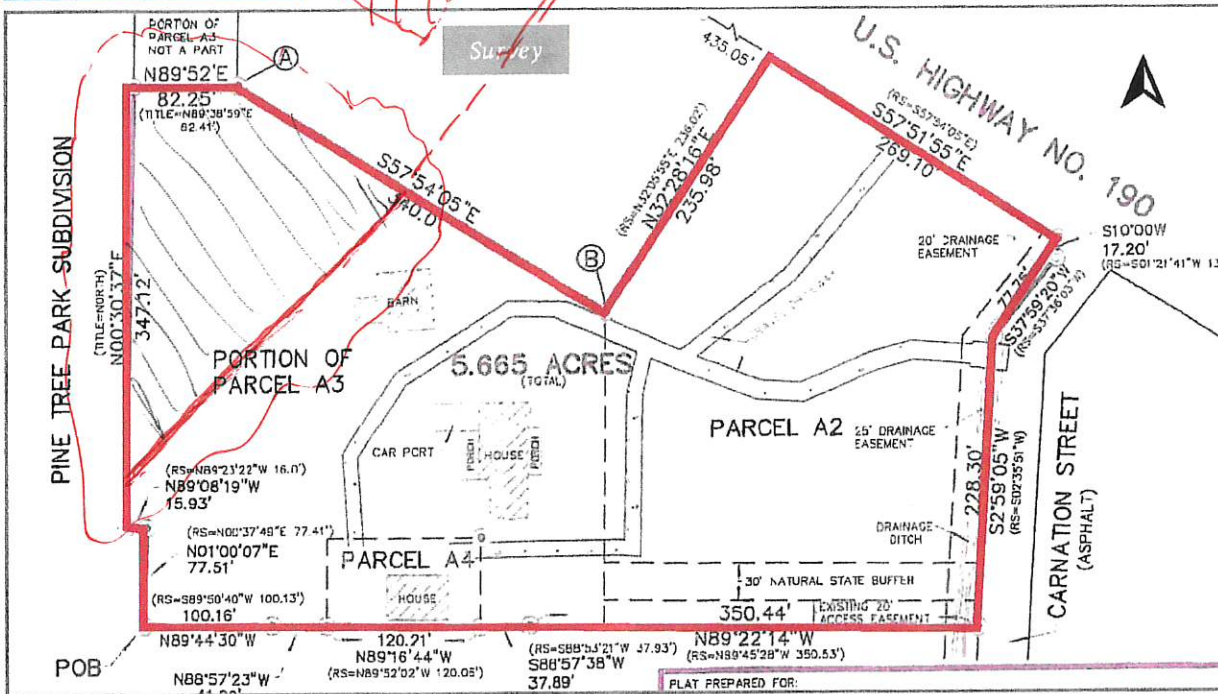


State Farm
Lee de la Houssaye
 Office: 985-898-2022
 Cell: 985-630-6035
 ldelahoussaye@stirlingprop.com

Gause & S. Carnation St. - 5.6 Acres

1241-1243 S. Carnation St., Slidell, LA



For Sale

Reduced to \$495,000

Property Summary

The possibilities are unlimited for this 5.6 acres in the middle of Slidell. This is a very unique property which could be used as a residence or be converted into a restaurant, a meeting facility, a retail development or unlimited other businesses. The entire property could also be redeveloped.

Building Size

- Large House - 3,270 SF
- Small House - 1,680 SF
- 3 Storage Buildings
- Zoned C-2 Neighborhood Commercial

Land Size

- 5.6 Acres

Traffic Counts (ADT 2015)

- US Hwy 190/Gause Blvd. - 16,298

2017 Demographics

	1 mi.	3 mi.	5 mi.
Population	6,226	48,888	90,290
Avg. HH Income	\$64,722	\$68,603	\$74,937



