

## SUPERGRATE® PULTRUDED + MOLDED GRATING

Supergrate® is a high strength light weight grating system fabricated from highly corrosion resistant I and T bars and two components that mechanically lock to form the cross bars. The high strength, extremely stiff Supergrate® system is ideal for corrosive applications where light weight and safety are a must. Pultruded grating is available in 1" and 1-1/2" I-Bar depth and 2" T-Bar depth. 1" and 1-1/2" pultruded grating is available with a 40%, 50%, or 60% open area. 2" pultruded grating is available with a 33% and 50% open area.

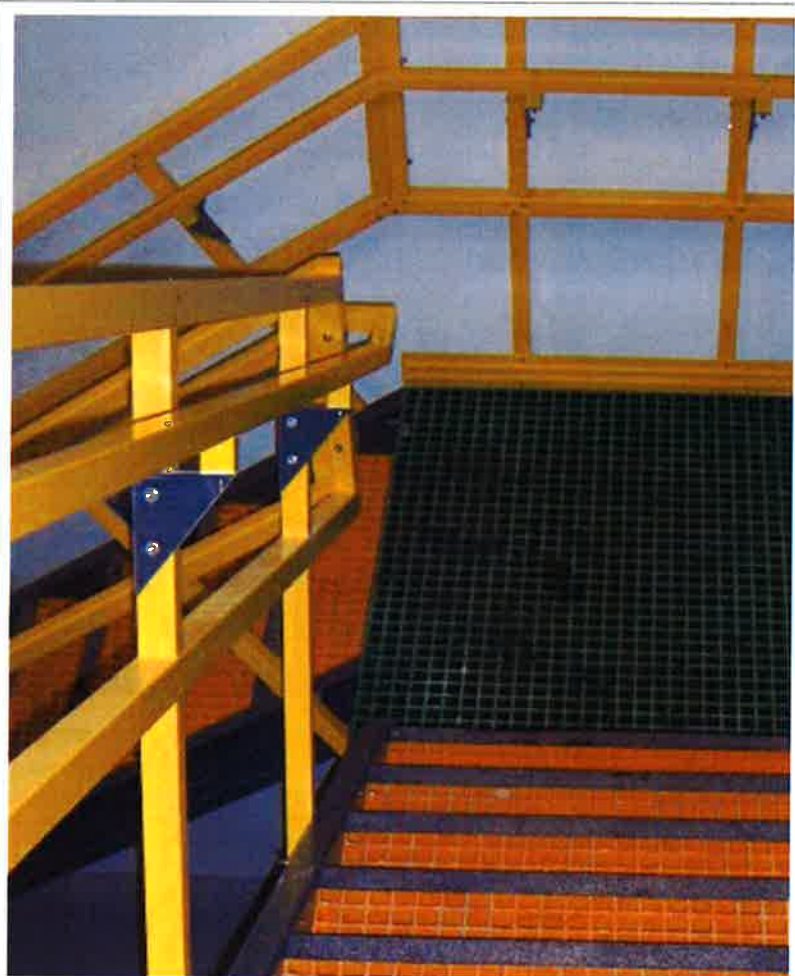
Supergrate® Molded Grating is ideal for highly corrosive applications requiring a large % open area. Molded grating is the prime candidate for jobs requiring extensive fabrication and cut outs and is available in 1", 1-1/2" and 2" panel thickness, grid patterns from 1-1/2" x 1-1/2", 1" x 4" and 2" x 2" in various panel sizes.

### FEATURES AND BENEFITS

- Maintenance Free
- Ease of Installation
- Built-In Resiliency
- Environmentally Safe
- Corrosion Resistance
- Electrical And Thermal Insulation
- Electromagnetic Transparency
- Part Integration
- Inherent Color
- Dimensional Stability Over Wide Temperature Ranges

### ANTISKID INFORMATION

CA quartz silica number 5 size aggregate blended with an epoxy matrix creates the antiskid surface. The antiskid is specially formulated for industrial traffic.



### APPLICATIONS

- DECKING FOR WALKWAYS + PLATFORMS
- FLOORS
- STAIRS
- TRENCH AND PIT COVERS
- RAMPS
- GUARDS FOR ELECTRICAL EQUIPMENT + MACHINERY

## COLOR

Pultruded Grating: IFR – Yellow • VFR – Dark Gray and Yellow

Molded Grating: IFR – Green, Yellow and Gray • VFR – Gray

Note: Special resins, colors and lengths available, contact factory at 888-CPI-PULL.

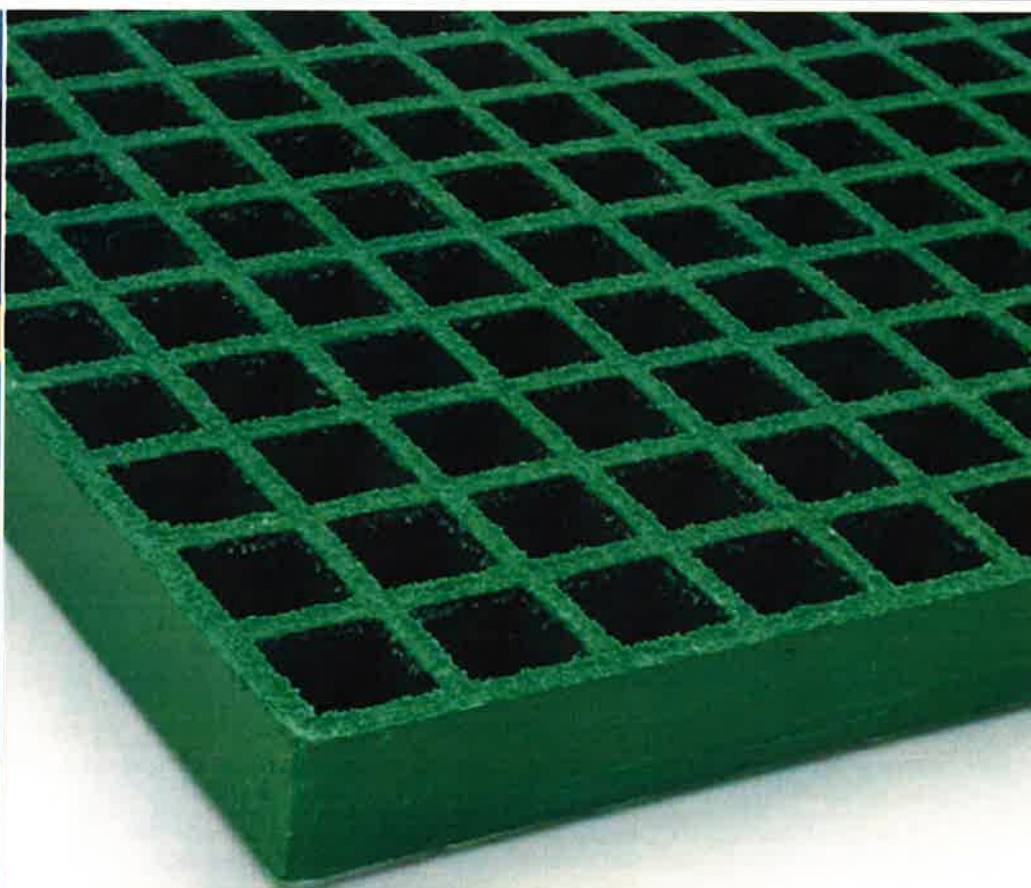
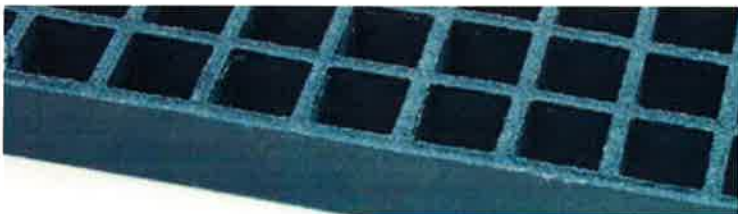


PHOTO COURTESY OF ULTRA FIBERGLASS SYSTEMS



## SUPERGRATE® PULTRUDED AND MOLDED GRATING HARDWARE

### PULTRUDED STAIR TREAD OFFERING

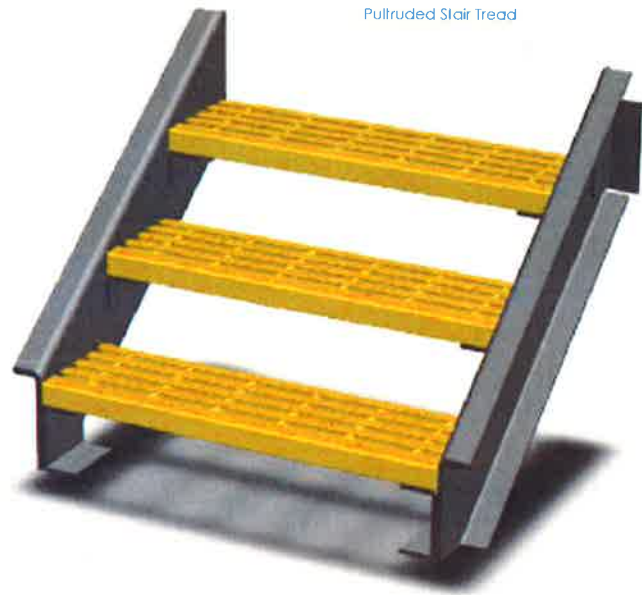
Item	Panel Thickness	Resin Series	Color
I4010-6X	1"	IFR/VFR	Dark Gray/Yellow
I4015-6X	1.5"	IFR/VFR	Dark Gray/Yellow
I6010-6X	1"	IFR/VFR	Dark Gray/Yellow
I6015-6X	1.5"	IFR/VFR	Dark Gray/Yellow
T5020-6X	2"	IFR/VFR	Dark Gray/Yellow

IFR - Isophthalic Polyester Resin

VFR - Vinyl Ester Flame Retardant Resin

Standard Width is 12" (with nosing) and Standard Length is 20'.

Consult Price List for Availability.

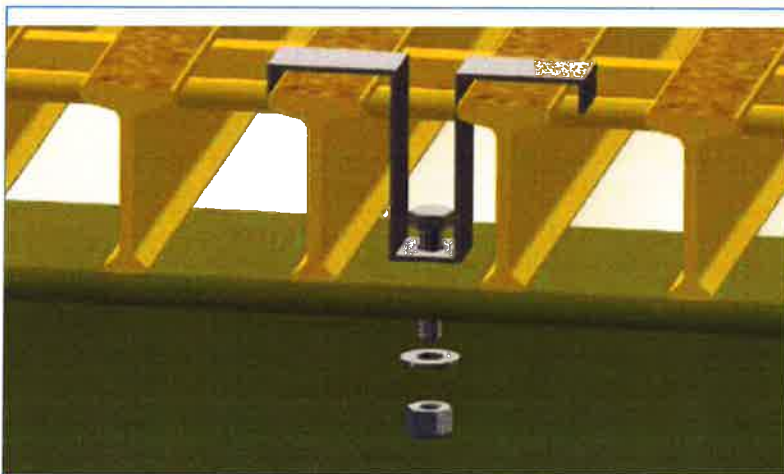


### PULTRUDED GRATING HARDWARE

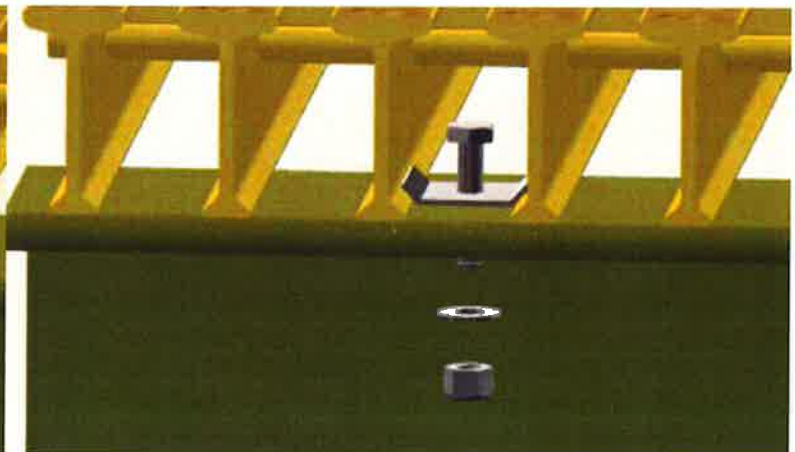
Item	Clip Part Number	Kit Part Number <sup>1</sup>
I4010 & I4015 Bottom Clip	CLP005	CLK002
I5010 & I5015 M-Clip	CLP007	CLK004
I6010 M-Clip	CLP006	CLK003
I6015 M-Clip	CLP008	CLK005
T3320 Bottom Clip	CLP009	CLK006
T5020 M-Clip	CLP010	CLK007

<sup>1</sup>Kits include one each of the clip, bolt, washer and nylock nut.

<sup>2</sup>All hold-down components are 316SS.



Pultruded Grating M-Clip



Pultruded Grating Bottom Clip

## MOLDED STAIR TREAD OFFERING

Item	Panel Thickness	Grid Pattern	Panel Size
GRT036	1.5"	1.5" x 1.5"	22-1/2" x 12'
GRT061 (stocked)	1.5"	1.5" x 1.5"	28.75" x 12'

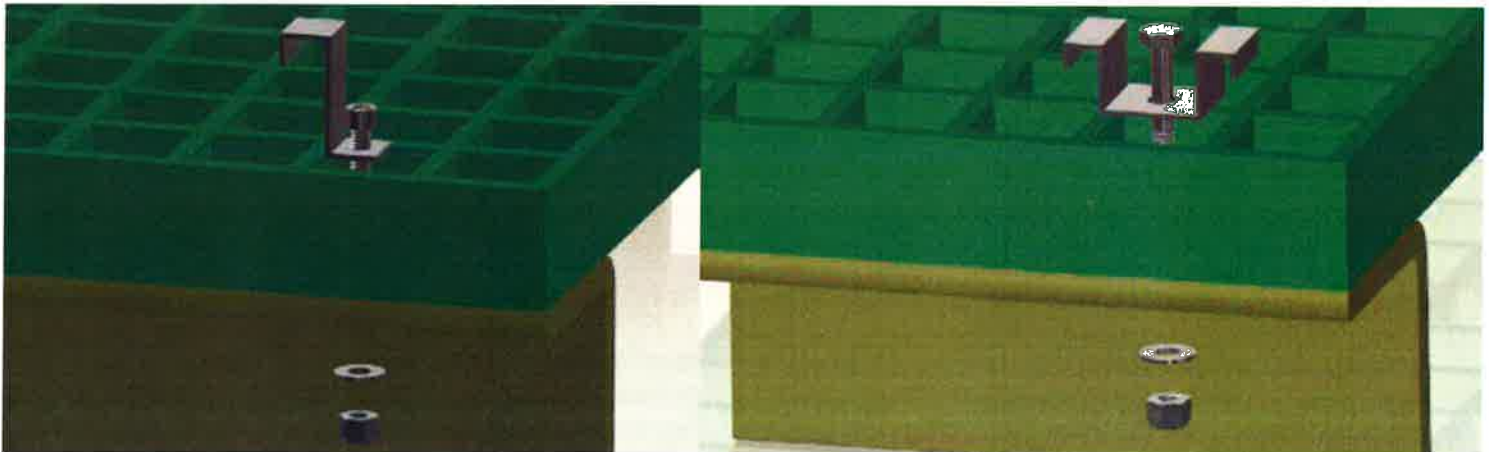
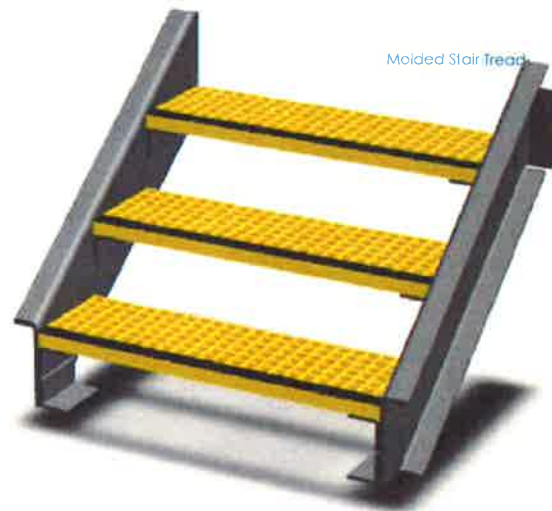
Treads are VFR yellow and have double sided black "gritted" nosing. Balance of tread is meniscus non-slip surface. Sold in full panels only. Consult Price List for Availability.



## MOLDED GRATING HARDWARE

Item	Clip Part Number	Kit Part Number <sup>1</sup>
1" Thick x 1.5" Grid M-Clip	CLP037	CLK010
1.5" Thick x 1.5" Grid M-Clip	CLP037	CLK015
2" Thick x 2" Grid M-Clip	CLP038	CLK019

<sup>1</sup>Kits include one each of the clip, bolt, washer and nylock nut.  
<sup>2</sup>All hold-down components are 316SS.



Molded Grating J-Clip (available upon request, consult factory)

Molded Grating M-Clip