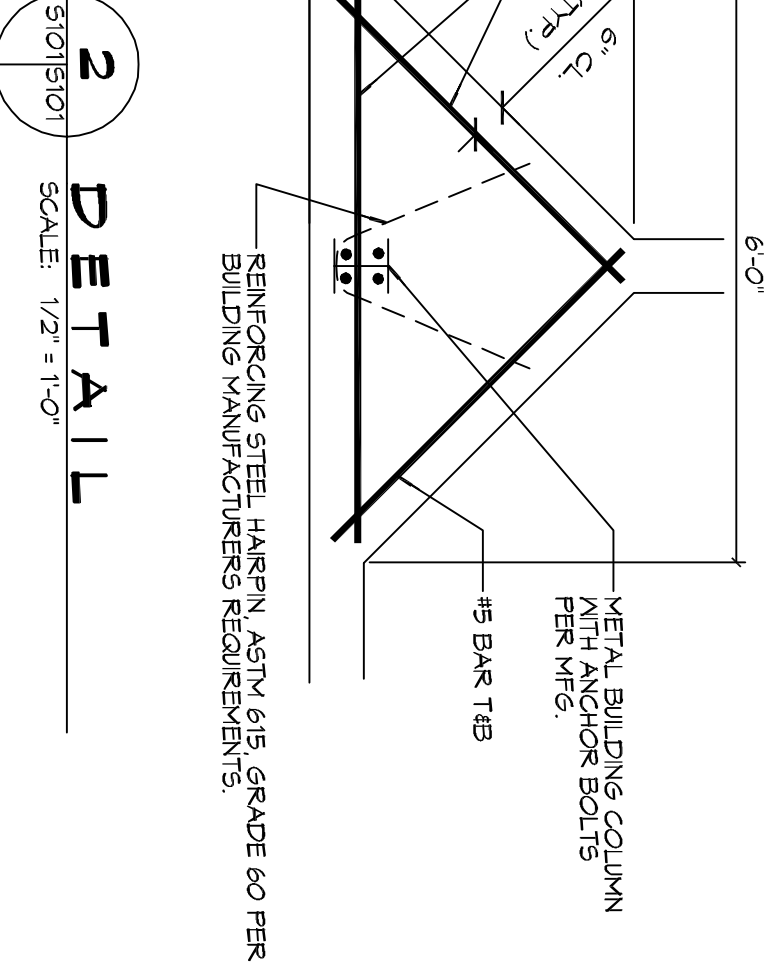
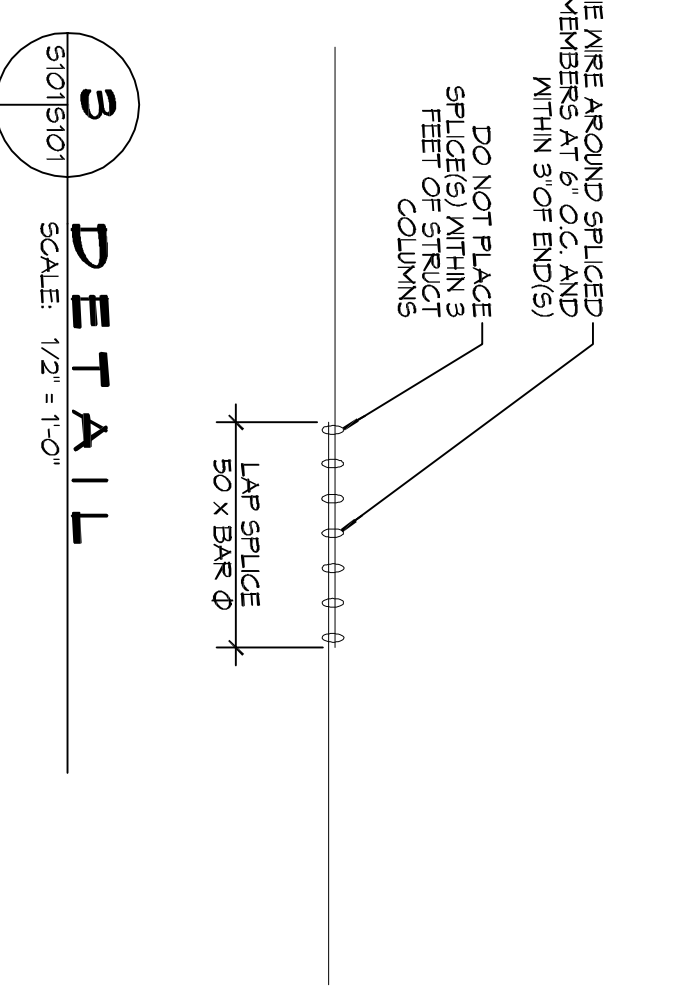
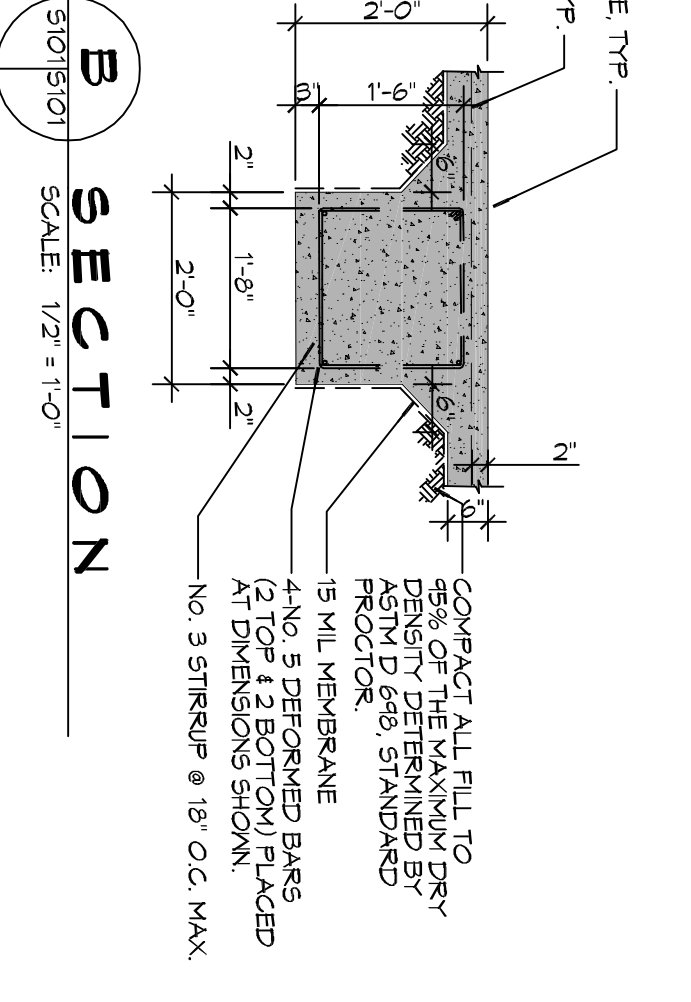
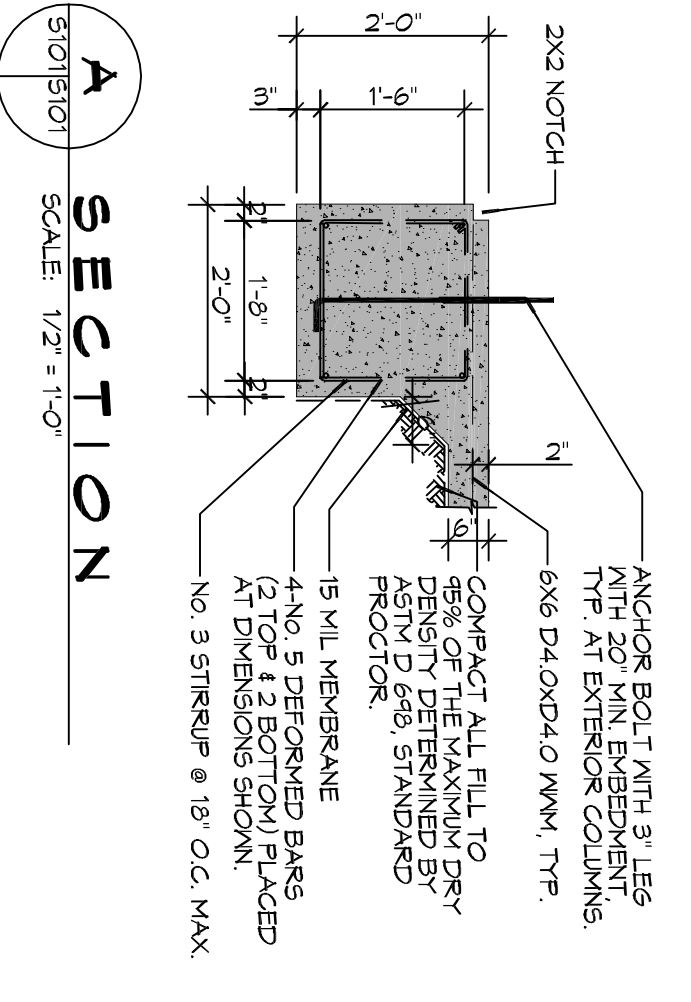


1 FOUNDATION PLAN
SCALE: 3/8" = 1'-0"



2 DETAIL
SCALE: 1/2" = 1'-0"

B SECTION
SCALE: 1/2" = 1'-0"

A SECTION
SCALE: 1/2" = 1'-0"

3 DETAIL
SCALE: 1/2" = 1'-0"

- FOUNDATION NOTES**
1. ALL DIMENSIONS ARE EDGE OF CONCRETE (EOC) TO EDGE OF CONCRETE (EOC) UNLESS NOTED OTHERWISE.
 2. VERIFY ALL PUMPING ROUGH-IN LOCATIONS ON ARCHITECTURAL DWGS.
 3. CONCRETE MIX SHALL HAVE A MINIMUM COMPRESSIVE STRENGTH OF 4000 PSI AT 28 DAYS. CONCRETE MIX SHALL BE IN ACCORDANCE WITH ACI-318.
 4. ALL CONVENTIONAL REINFORCING STEEL SHALL MEET ASTM-A615 (GRADE 60).
 5. ONE LAYER OF POLYETHYLENE VAPOUR BARRIER SHALL BE PLACED UNDER ALL CONCRETE. VAPOUR BARRIER TO BE MINIMUM 10 MIL THICKNESS. ASTM E 1745 CLASS A. PERMEANCE LESS THAN 0.01 PERMS. EQUAL TO STENO INDUSTRIES STENO WEAPE. ECOHIELD-15 MIL BY EPDM OR ROYALAN 15 BY FILATRON FILMS. PROVIDE APPROPRIATE ACCESSORIES FOR A COMPLETE SYSTEM.
 6. ALL REINFORCING STEEL AND WESH SHALL BE SECURELY SUPPORTED TO PREVENT DEFLECTION AND HORIZONTAL MOVEMENT DURING CONCRETE PLACEMENT.
 7. THE CONTRACTOR SHALL VERIFY ALL DROPS, OFFSETS, BRICK LEDGES, DIMENSIONS AND CONFIGURATIONS. CONTRACTOR MUST BE RESPONSIBLE FOR SAME.
 8. GRADE BEAM DIMENSIONS MAY VARY BY +5% +0.00.
 9. REMOVE ANY AND ALL BAD SOIL IN FOOT PRINT AND REPLACE WITH M4 SELECT.
 10. ALL SOIL BELOW SLAB SHALL RECEIVE TERMITTE TREATMENT.



554 Old Spanish Trail
Slidell, LA 70458
PH: 985.649.5832
www.dammonengineering.com
info@dammonengineering.com
Fax: 985.641.5950

REVISIONS		DATE
#	DESCRIPTION	

FOUNDATION LAYOUT
J E R E M I A H J O N E S
61781 AIRPORT ROAD
SLIDELL, LOUISIANA 70458
JOB No: 2017 DATE: 06-06-2017
DRAWN BY: CKD CHECKED BY: BAN

DRAWING NUMBER:
S101
SHEET NO: 1 OF 1