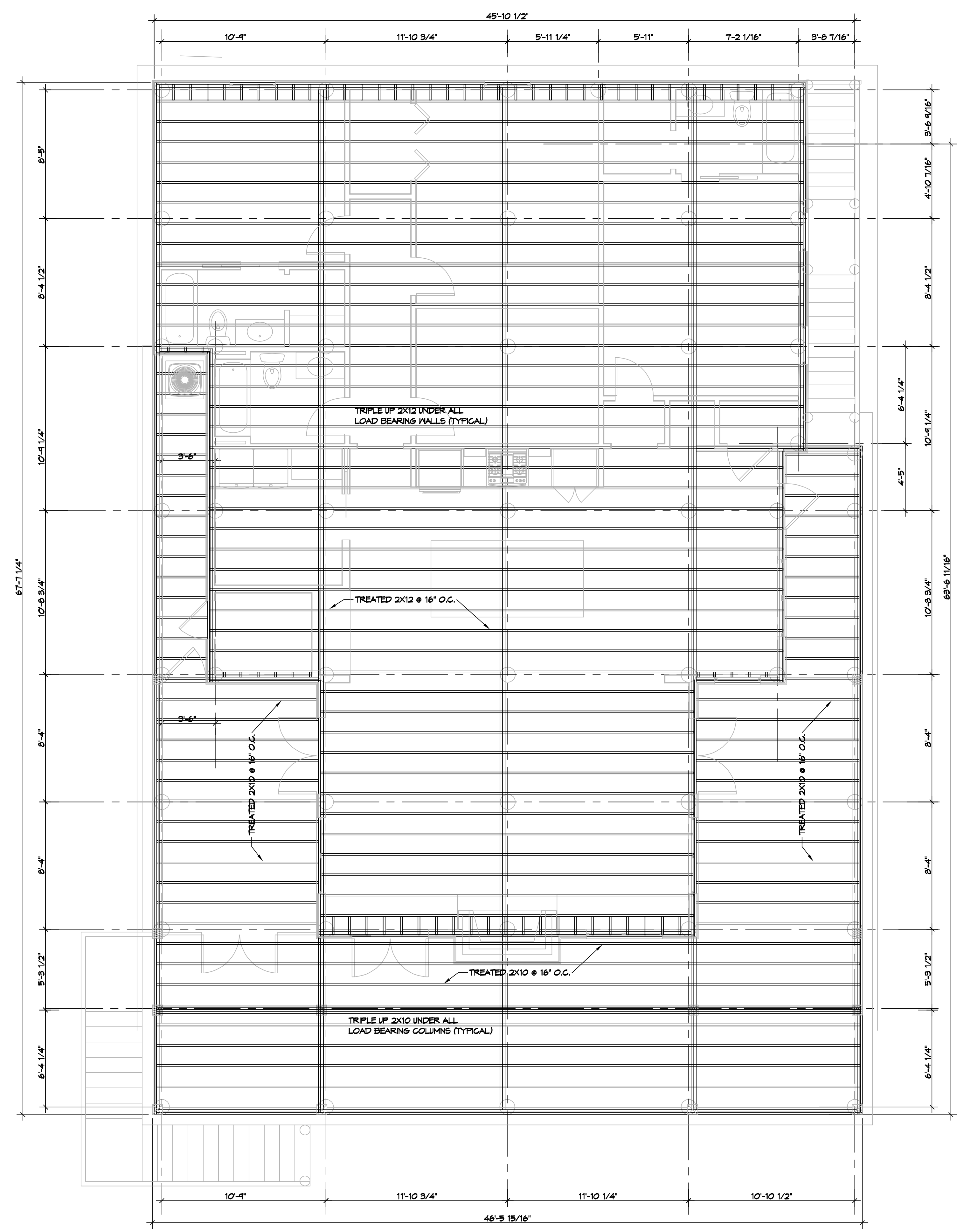
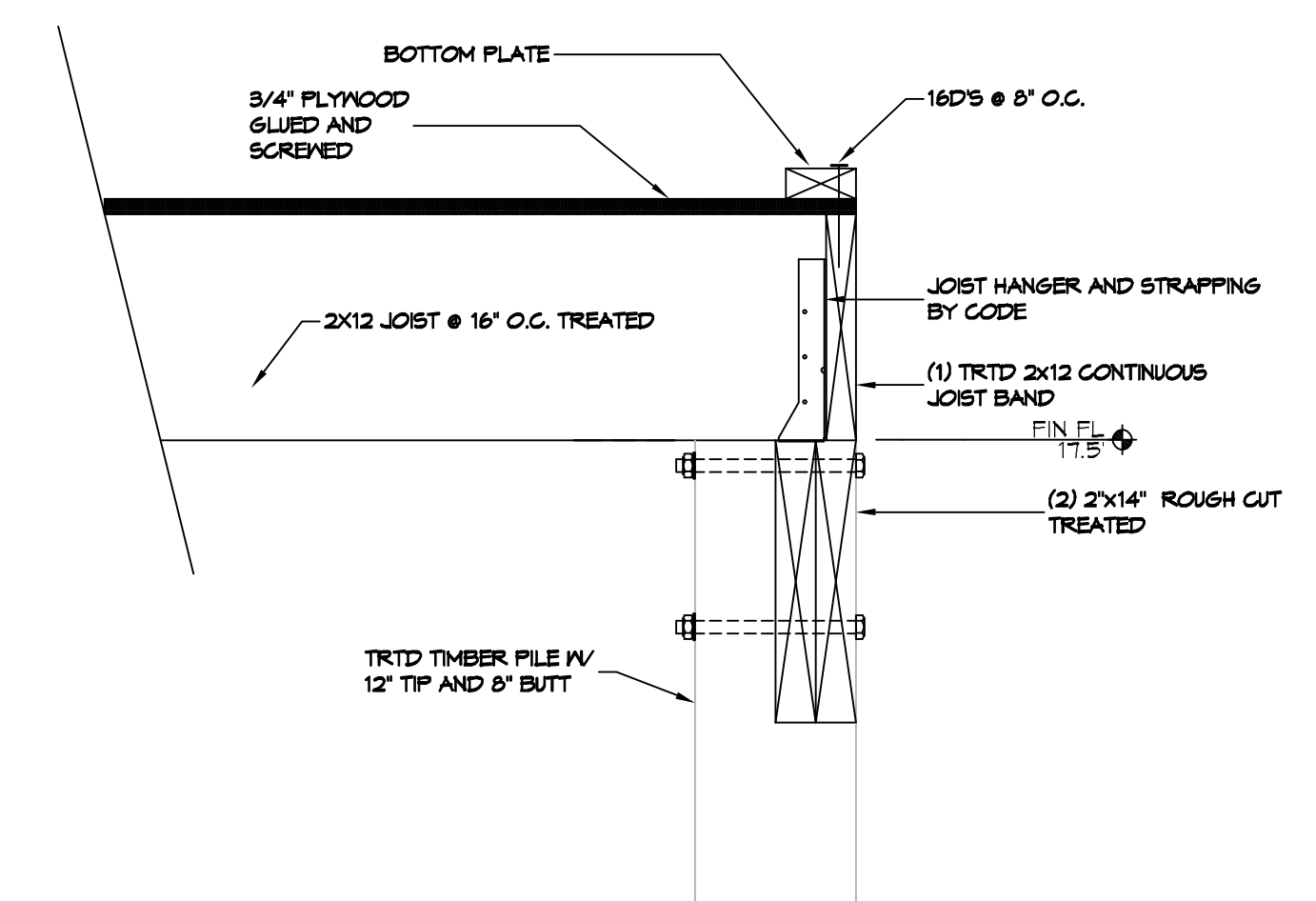


P.L. 08/22/2022, 10:43:23 AM, C:\Users\jdammon\OneDrive\Documents\2022\0822\08220822.dwg, 08/22/2022, 10:43:23 AM



2 FLOOR FRAMING PLAN
SCALE: 1/4" = 1'-0"



DETAIL
SCALE: 1-1/2" = 1'-0" PERIMETER JOIST BAND

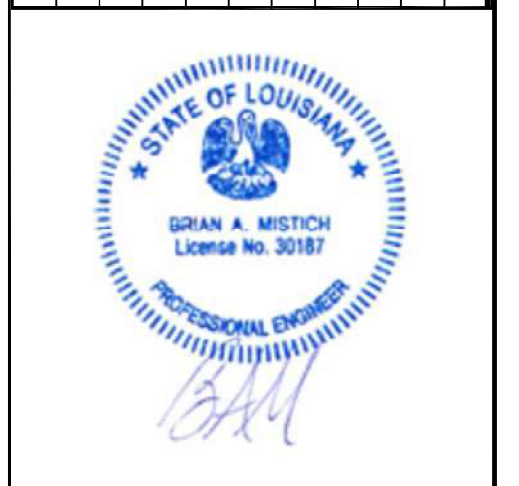
- GENERAL NOTES**
1. ALL LUMBER SHALL BE PRESSURE TREATED WITH A RETENTION OF .4 PER C.F.
 2. ALL FASTENERS SHALL BE HOT DIPPED GALVANIZED (HDS) PER ASTM A193.
 3. ALL CONNECTORS SHALL BE HDG PER ASTM A693, CLASS 6185 SHEET WITH 1.85 OZ/SF ZINC COATING.
 4. TRIPLE UP FLOOR JOIST UNDER TUB AND INTERIOR LOAD BEARING WALLS.

DAMMON ENGINEERING, INC.
LOUISIANA & MISSISSIPPI

Chief Engineer: Brian Misch, PE
554 Old Spanish Trail
Slidell, LA 70458

www.dammonengineering.com
info@dammonengineering.com
PH: 985.649.5837

| # | DESCRIPTION | REVISIONS | DATE |
|---|-------------|-----------|------|
| | | | |
| | | | |
| | | | |
| | | | |
| | | | |
| | | | |
| | | | |
| | | | |
| | | | |
| | | | |



STRUCTURAL DWGS

J I M I S M I T H

LOT 1 SQUARE 1
22190 CHEF MENTEUR HWY US 90
NEW ORLEANS LA 70121

JOB No: 2022 DATE: 08-02-2022
DRAWN BY: CKD CHECKED BY: CKD

SHEET TITLE:
FLOOR FRAMING PLAN

DRAWING NUMBER:

S102

SHEET No: 2 of 5

TABLE S601.7 - UPLIFT CONNECTIONS - 150 MPH WINDS EXP "C"
WFCM 2015 TABLE 3.2

| CONNECTION | FRAMING SPACING (INCHES) | ROOF SPAN (FEET) | UPLIFT | LATERAL | SHEAR | NUMBER OF 8d COMMON NAILS OR 10d BOX NAILS IN EACH END OF 1-1/4"x20 GAGE STRAP |
|--------------------------------|--------------------------|------------------|--------|---------|-------|--|
| ROOF ASSEMBLY TO WALL ASSEMBLY | 16" OC | 16 | 40T | 242 | 152R | 4 |
| WALL ASSEMBLY TO FOUNDATION | 16" OC | 16 | 224 | 219 | 436 | 4 |

TABLE S601.8 - SILL OR BOTTOM PLATE TO FOUNDATION CONNECTIONS RESISTING UPLIFT LOADS - 150 MPH WIND EXP "C"
WFCM 2015 TABLE 3.2C

| BOTTOM PLATE TO FOUNDATION ANCHOR BOLT CONNECTION RESISTING | FOUNDATION SUPPORTING | MAXIMUM ANCHOR BOLT SPACING (INCHES) |
|---|-----------------------|--|
| UPLIFT LOADS | 1 - 3 STORES | 8' END ZONES 25 INCHES ON CENTER INTERIOR ZONES 30 INCHES ON CENTER |

NOTE: A MINIMUM OF ONE ANCHOR BOLT SHALL BE PROVIDED WITHIN 6 TO 12 INCHES OF EACH END OF EACH PLATE

TABLE S601.9 - SILL OR BOTTOM PLATE TO FOUNDATION CONNECTIONS RESISTING SHEAR LOADS - 150 MPH WIND EXP "C"
WFCM 2015 TABLE 3.2B

| BOTTOM PLATE TO FOUNDATION ANCHOR BOLT CONNECTION RESISTING | FOUNDATION SUPPORTING | MAXIMUM ANCHOR BOLT SPACING (INCHES) |
|---|-----------------------|--|
| UPLIFT LOADS | 4 STORY | 5/8" Ø ANCHOR BOLTS 48 INCHES ON CENTER W/3X3X1/4" WASHER |

TABLE S601.10 - FULL HEIGHT STUD REQUIREMENT FOR HEADERS OR WINDOW SILL PLATES IN EXTERIOR WALLS EXPOSURE "C"
WFCM 2015 TABLE 3.29C

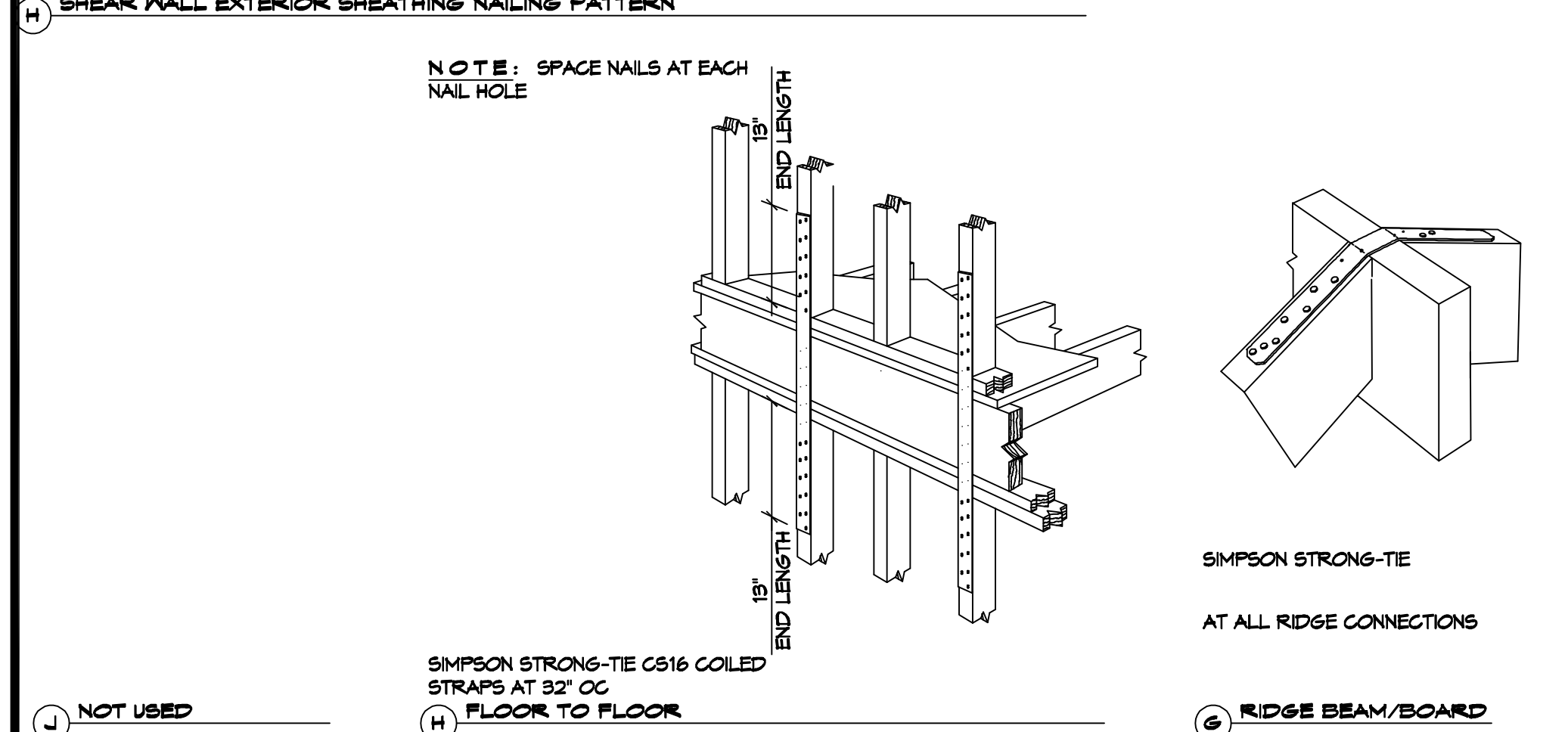
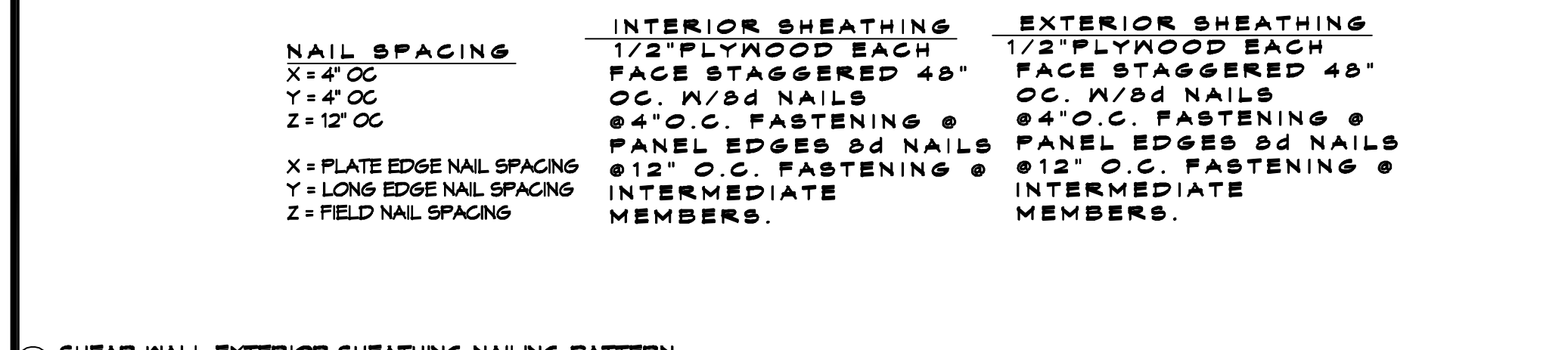
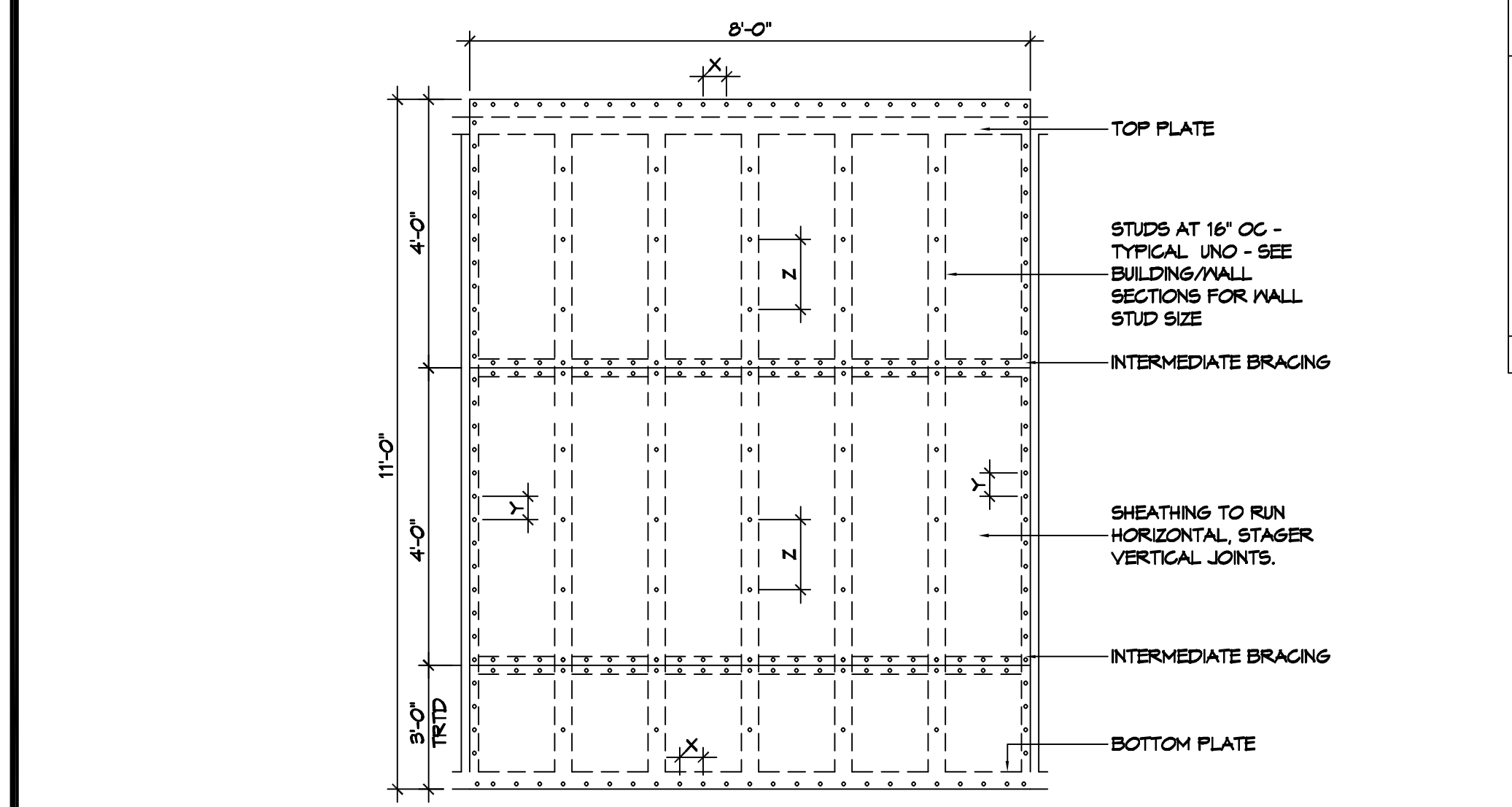
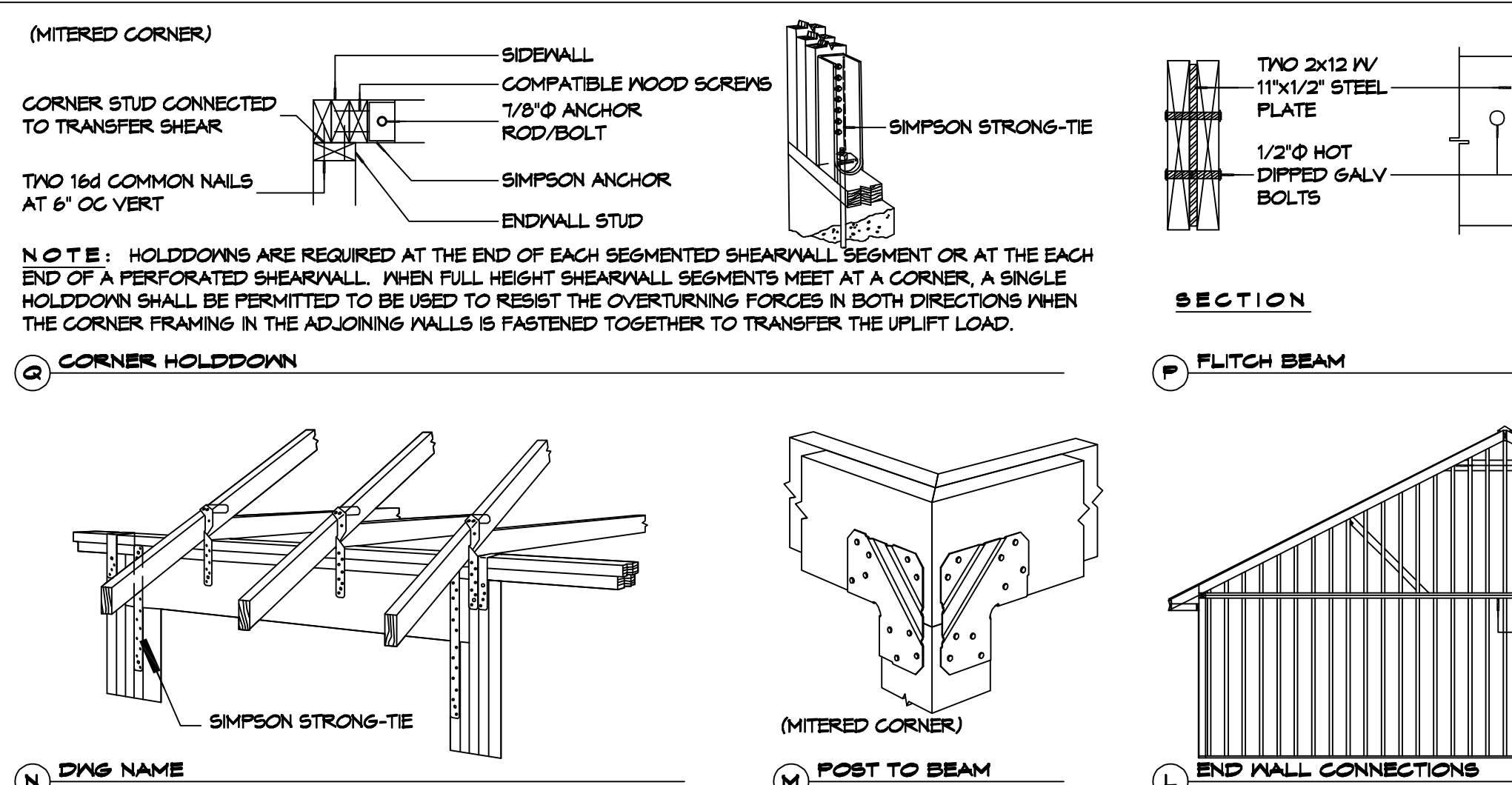
| HEADER SPAN (FEET) | WALL SPACING (INCHES) | | |
|--------------------|-----------------------|----------|----------|
| | 12" O.C. | 16" O.C. | 24" O.C. |
| 2 | 1 | 1 | 1 |
| 4 | 2 | 2 | 1 |
| 6 | 3 | 3 | 2 |
| 8 | 4 | 3 | 2 |

TABLE S601.5 - JACK STUD REQ - INT LOADBEARING WALLS

| HEADER SUPPORTING | HEADER SPAN (FT) | ROOF SPAN (FEET) | | | | | | | | | | | | | |
|---------------------------------|------------------|------------------|------|----|------|---------|------|----|------|---------|------|----|----|---|---|
| | | 12 FEET | | | | 24 FEET | | | | 36 FEET | | | | | |
| | | 3' | 4.5' | 5' | 6.5' | 3' | 4.5' | 5' | 6.5' | 3' | 4.5' | 5' | 6' | | |
| ONE FLOOR ONLY (CENTER BEARING) | 2 | 1 | 1 | 1 | 1 | 1 | 1 | 1 | 1 | 1 | 1 | 1 | 1 | 1 | 1 |
| | 4 | 1 | 1 | 1 | 1 | 1 | 1 | 1 | 1 | 1 | 1 | 1 | 1 | 1 | 1 |
| | 6 | 1 | 1 | 1 | 1 | 1 | 1 | 1 | 1 | 2 | 1 | 1 | 1 | 1 | 1 |
| | 8 | 1 | 1 | 1 | 1 | 2 | 1 | 1 | 1 | 2 | 2 | 2 | 1 | 1 | 1 |
| | 10 | 1 | 1 | 1 | 1 | 2 | 2 | 1 | 1 | 3 | 2 | 2 | 2 | 2 | 2 |
| | 12 | 1 | 1 | 1 | 1 | 2 | 2 | 2 | 1 | 3 | 2 | 2 | 2 | 2 | 2 |
| TWO FLOORS (CENTER BEARING) | 2 | 1 | 1 | 1 | 1 | 1 | 1 | 1 | 1 | 2 | 1 | 1 | 1 | 1 | 1 |
| | 4 | 1 | 1 | 1 | 1 | 2 | 1 | 1 | 1 | 3 | 2 | 2 | 2 | 2 | 2 |
| | 6 | 2 | 1 | 1 | 1 | 3 | 2 | 2 | 2 | 4 | 3 | 2 | 2 | 2 | 2 |
| | 8 | 2 | 2 | 1 | 1 | 3 | 2 | 2 | 2 | 5 | 3 | 3 | 3 | 3 | 3 |
| | 10 | 2 | 2 | 2 | 1 | 4 | 3 | 3 | 2 | 6 | 4 | 4 | 3 | 3 | 3 |
| | 12 | 3 | 2 | 2 | 2 | 5 | 3 | 3 | 3 | 7 | 5 | 4 | 4 | 4 | 4 |

TABLE S601.6 - JACK STUD REQ - EXTERIOR LOADBEARING WALLS
WFCM 2015 TABLE 3.22F

| ROOF AND CEILING | HEADER WIDTH - 3" (2-2x), 4.5" (3-2x), 5", 6.5" (4-2x) EACH 1/2" PLYWOOD SPACER BETWEEN | ROOF LIVE LOAD 20 PSF | | | | | | | | | | | |
|---|---|-----------------------|------|----|------|----|------|----|------|---|---|---|---|
| | | 3" | | | | 5" | | | | | | | |
| | | 3' | 4.5' | 5' | 6.5' | 3' | 4.5' | 5' | 6.5' | | | | |
| ROOF AND CEILING | 2 | 1 | 1 | 1 | 1 | 1 | 1 | 1 | 1 | 1 | 1 | 1 | 1 |
| | 4 | 1 | 1 | 1 | 1 | 1 | 1 | 1 | 1 | 1 | 1 | 1 | 1 |
| | 6 | 2 | 1 | 1 | 1 | 2 | 1 | 1 | 1 | 1 | 1 | 1 | 1 |
| | 8 | 2 | 2 | 2 | 1 | 2 | 2 | 2 | 1 | 2 | 2 | 2 | 1 |
| | 10 | 3 | 2 | 2 | 2 | 3 | 2 | 2 | 2 | 3 | 2 | 2 | 2 |
| | 12 | 3 | 2 | 2 | 2 | 3 | 2 | 2 | 2 | 3 | 2 | 2 | 2 |
| ROOF, CEILING, AND ONE CENTER BEARING FLOOR | 2 | 1 | 1 | 1 | 1 | 1 | 1 | 1 | 1 | 1 | 1 | 1 | 1 |
| | 4 | 2 | 1 | 1 | 1 | 2 | 1 | 1 | 1 | 1 | 1 | 1 | 1 |
| | 6 | 2 | 2 | 2 | 1 | 3 | 2 | 2 | 2 | 2 | 2 | 2 | 2 |
| | 8 | 3 | 2 | 2 | 2 | 3 | 2 | 2 | 2 | 3 | 2 | 2 | 2 |
| | 10 | 4 | 3 | 2 | 2 | 4 | 3 | 3 | 2 | 4 | 3 | 2 | 2 |
| | 12 | 4 | 3 | 3 | 2 | 5 | 3 | 3 | 3 | 5 | 3 | 3 | 3 |



TYPICAL CONNECTION DETAILS
SCALE: NTS

TABLE S601.3 - NAILING SCHEDULE
WFCM 2015 TABLE 3.1

| DESCRIPTION | NUMBER OF COMMON NAILS | NUMBER OF BOX NAILS | SPACING |
|--------------------------------|------------------------|---------------------|--------------|
| HEADER TO HEADER (FACE NAILED) | 16d | 16d | 16" OC EDGES |

TABLE S601.4 - BUILDING ENVELOPE REQUIREMENTS

| OPAQUE ELEMENTS | ASSEMBLY MAXIMUM | INSULATION MIN. R-VALUE |
|--------------------------------|------------------|-------------------------|
| ROOFS | | |
| INSULATION ENTIRELY ABOVE DECK | U-0.048 | R-20.0 G.I. |
| METAL BUILDING | U-0.065 | R-19 |
| ATTIC AND OTHER | U-0.027 | R-38 |
| WALLS, ABOVE GRADE | | |
| MASS | U-0.151 | R-5.7 G.I. |
| METAL BUILDING | U-0.113 | R-19.0 |
| STEEL-FRAMED | U-0.124 | R-19.0 |
| WOOD-FRAMED AND OTHER | U-0.089 | R-19.0 |
| FLOORS | | |
| MASS | U-0.107 | R6-3 G.I. |
| STEEL JOIST | U-0.052 | R-19.0 |
| WOOD FRAMED AND OTHER | U-0.051 | R-19.0 |
| SLAB-ON-GRADE | | |
| UN-HEATED | F-0.730 | NR |
| OPAQUE DOORS | | |
| SWINGING | U-0.700 | NR |
| NON-SWINGING | U-1.450 | NR |

ROOF UNDERLAYMENT NOTES

- FOR ROOF SLOPES FROM TWO UNITS VERTICAL IN 12 UNITS HORIZONTAL (17-PERCENT SLOPE), UP TO FOUR UNITS VERTICAL IN 12 UNITS HORIZONTAL (33-PERCENT SLOPE), UNDERLAYMENT SHALL BE TWO LAYERS APPLIED IN THE FOLLOWING MANNER:
 - APPLY A 14 INCH STRIP OF UNDERLAYMENT FELT PARALLEL WITH AND STARTING AT THE EAVES, FASTENED SUFFICIENTLY TO HOLD IN PLACE. STARTING AT THE EAVE, APPLY 36 INCH WIDE SHEETS OF UNDERLAYMENT, OVERLAPPING SUCCESSIVE SHEETS 14 INCHES, AND FASTENED SUFFICIENTLY TO HOLD IN PLACE.
 - FOR ROOF SLOPES OF FOUR UNITS VERTICAL IN 12 UNITS HORIZONTAL (33-PERCENT SLOPE) OR GREATER, UNDERLAYMENT SHALL BE ONE LAYER APPLIED IN THE FOLLOWING MANNER:
 - UNDERLAYMENT SHALL BE APPLIED SINGLE FASHION, PARALLEL TO AND STARTING FROM THE EAVE AND LAPPED 2 INCHES, FASTENED SUFFICIENTLY TO HOLD IN PLACE. END LAPS SHALL BE OFFSET BY 6 FEET.

SHINGLE APPLICATION & FASTENING NOTES

- ASPHALT STRIP SHINGLES SHALL HAVE A MINIMUM OF SIX FASTENERS PER SHINGLE WHERE THE ROOF IS IN ONE OF THE FOLLOWING CATEGORIES:
 - THE BASIC WIND SPEED IS 110 MPH OR GREATER AND THE EAVE IS 20 FEET OR HIGHER ABOVE GRADE.
 - THE BASIC WIND SPEED IS 120 MPH OR GREATER.
 - SPECIAL WIND ZONES.

METAL ROOF APPLICATION & FASTENING NOTES

- INSTALL METAL ROOF PER MANUFACTURERS RECOMMENDATIONS FOR 150MPH WIND SPEED.

GENERAL UPLIFT CONNECTION NOTES

ROOF ASSEMBLY TO WALL ASSEMBLY:
UPLIFT CONNECTIONS SHALL BE FROM RAFTER OR TRUSS TO WALL STUD. WHEN RAFTERS OR TRUSSES ARE NOT LOCATED DIRECTLY ABOVE STUDS, RAFTERS SHALL BE ATTACHED TO THE WALL PLATE AND THE WALL TOP PLATE SHALL BE ATTACHED TO THE WALL STUD WITH UPLIFT CONNECTIONS. UPLIFT CONNECTIONS SHALL BE IN ACCORDANCE WITH TABLE S601.10.

WALL ASSEMBLY TO WALL ASSEMBLY:
STORY TO STORY UPLIFT CONNECTIONS FROM UPPER STORY WALL STUD TO LOWER STORY WALL STUD. WHEN UPPER STORY WALL STUDS ARE NOT LOCATED DIRECTLY ABOVE LOWER WALL STUDS, THE STUDS SHALL BE ATTACHED TO A COMMON MEMBER IN THE FLOOR ASSEMBLY BY UPLIFT CONNECTIONS. UPLIFT CONNECTIONS SHALL BE IN ACCORDANCE WITH TABLE S601.11.

WALL ASSEMBLY TO FOUNDATION:
FIRST FLOOR WALL STUDS SHALL BE CONNECTED TO THE FOUNDATION, SILL PLATE, OR BOTTOM PLATE. A MINIMUM OF A 1-1/4" x 20 GA. ASTM A689 GRADE 33 STEEL STRAP SHALL BE NAILED TO THE WALL STUDS AND HAVE A MINIMUM EMBEDMENT OF 7 INCHES IN CONCRETE FOUNDATIONS AND SLABS-ON-GRADE. 15 INCHES IN MASONRY BLOCK FOUNDATIONS, OR BE LAPPED UNDER THE BOTTOM PLATE. 3 INCH SQUARE WASHERS SHALL BE USED ON THE ANCHOR BOLTS AND ANCHOR BOLT SPACINGS SHALL NOT EXCEED THE REQUIREMENTS. STEEL STRAPS EMBEDDED IN OR IN CONTACT WITH SLAB-ON-GRADE OR MASONRY BLOCK FOUNDATIONS SHALL BE HOT-DIPPED GALV. AFTER FABRICATION, OR MANUF. FROM G185 OR Z450 GALV. STL. CONNECTIONS SHALL BE IN ACCORDANCE WITH TABLE S601.12.

TABLE S601.1 - ROOF SHEATHING ATTACHMENT REQUIREMENT - WIND LOAD EXP "C"

| SHEATHING LOCATION | RAFTER / TRUSS SPACING | E F | |
|---------------------|------------------------|--|--|
| | | MAX NAIL SPACING FOR 8d COMMON NAILS (INCHES OC) | MAX NAIL SPACING FOR 10d BOX NAILS (INCHES OC) |
| INTERIOR ZONE | 12" OC | 6 | 12 |
| | 16" OC | 6 | 12 |
| | 24" OC | 6 | 12 |
| PERIMETER EDGE ZONE | 12" OC | 6 | 6 |
| | 16" OC | 4 | 4 |
| | 24" OC | 3 | 3 |

150 MPH WIND - EXPOSURE "C" TYPICAL.
E = NAIL SPACING AT PANEL EDGES, INCHES.
F = NAIL SPACING AT INTERMEDIATE SUPPORTS IN THE PANEL FIELD, INCHES.

TABLE S601.1 - WALL SHEATHING AND CLADDING REQUIREMENT - WIND LOAD EXP "C"

| SHEATHING LOCATION | RAFTER / TRUSS SPACING | E F | |
|---------------------|------------------------|--|--|
| | | MAX NAIL SPACING FOR 8d COMMON NAILS (INCHES OC) | MAX NAIL SPACING FOR 10d BOX NAILS (INCHES OC) |
| INTERIOR ZONE | 12" OC | 6 | 12 |
| | 16" OC | 6 | 12 |
| | 24" OC | 6 | 6 |
| PERIMETER EDGE ZONE | 12" OC | 6 | 12 |
| | 16" OC | 6 | 12 |
| | 24" OC | 6 | 6 |

150 MPH WIND - EXPOSURE "C" TYPICAL.
E = NAIL SPACING AT PANEL EDGES, INCHES.
F = NAIL SPACING AT INTERMEDIATE SUPPORTS IN THE PANEL FIELD, INCHES.

SHEET TITLE:
TYPICAL CONNECTION DETAILS, SCHEDULES, AND NOTES

DRAWING NUMBER:
S105

SCALE: NTS

REVISIONS:

| # | DESCRIPTION | DATE |
|---|-------------|------|
| | | |

DAMMON ENGINEERING, INC.
LOUISIANA & MISSISSIPPI

Chief Engineer: Brian Mitchell, PE
554 Old Spanish Trail
Slidell, LA 70458
www.dammonengineering.com
info@dammonengineering.com
PH: 985.649.5832

STATE OF LOUISIANA
BRIAN A. MITCHELL
LICENSE NO. 39187

DATE: 05-09-2022
JOB No: 2022
DRAWN BY: DD/KJK
CHECKED BY: CKD

STRUCTURAL DWGS

LOT 1 SQUARE 1
22140 CHIEF WENTWORTH HWY US 90
NEW ORLEANS LA 70124

SHEET No: 5 of 5