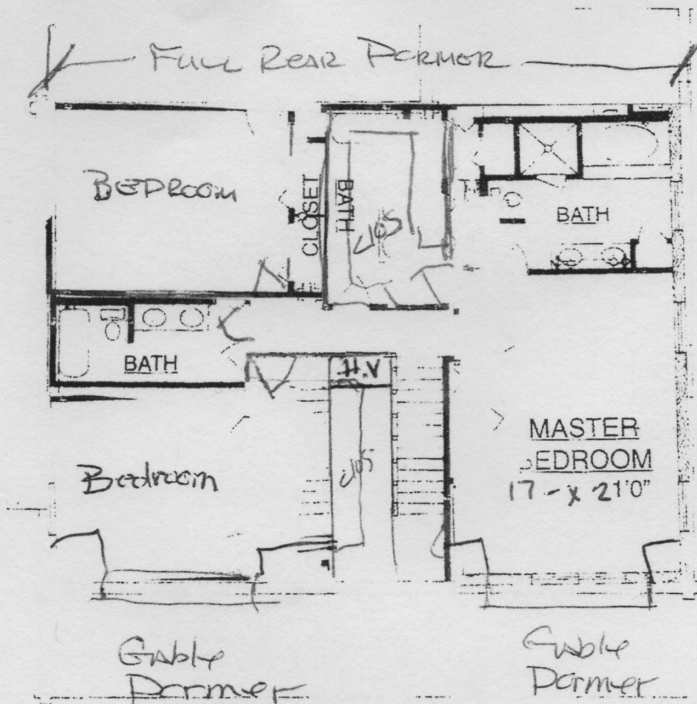


FIRST FLOOR

**AREA SCHEDULE**

FIRST FLOOR	1,573 SQ.FT	} 3025
SECOND FLOOR	1,452 SQ.FT	
PORCH	818 SQ.FT	
<b>TOTAL</b>	<b>3843 SQ.FT</b>	



SECOND FLOOR

**ACADIANA "B"** If you're looking for a really spacious log home that's designed with room for built in expansion, then the Acadiana "B" is for you. Large bedrooms, two complete baths, a family room-den with fireplace make this the ideal choice of the growing family with year-round rustic living in mind. The enormous country kitchen is adjacent to the large dining area. The master bedroom suite features his and her closets with a large private bath and dressing area. Upstairs there are two beautiful bedrooms and a loft. All in all the Acadiana "B" combines rustic charm with space and convenience for today's large family.