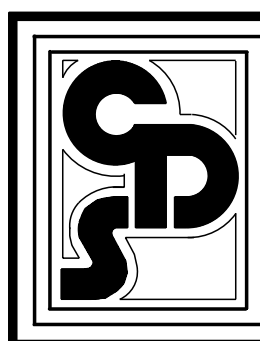


FLOOR PLAN
SCALE = 1/4"=1'-0"

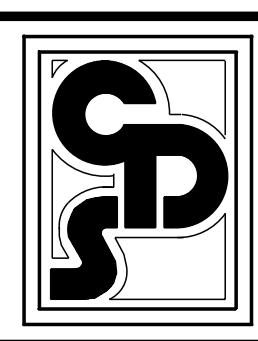
LIVING AREA DOWN	= 2240
LIVING AREA UP	= 988
TOTAL LIVING AREA	= 3228
FRONT PORCH	= 420
REAR PORCH	= 517
TOTAL AREA U.B.	= 4165

PLANS FOR:
MARK & MARTI SHIFFER

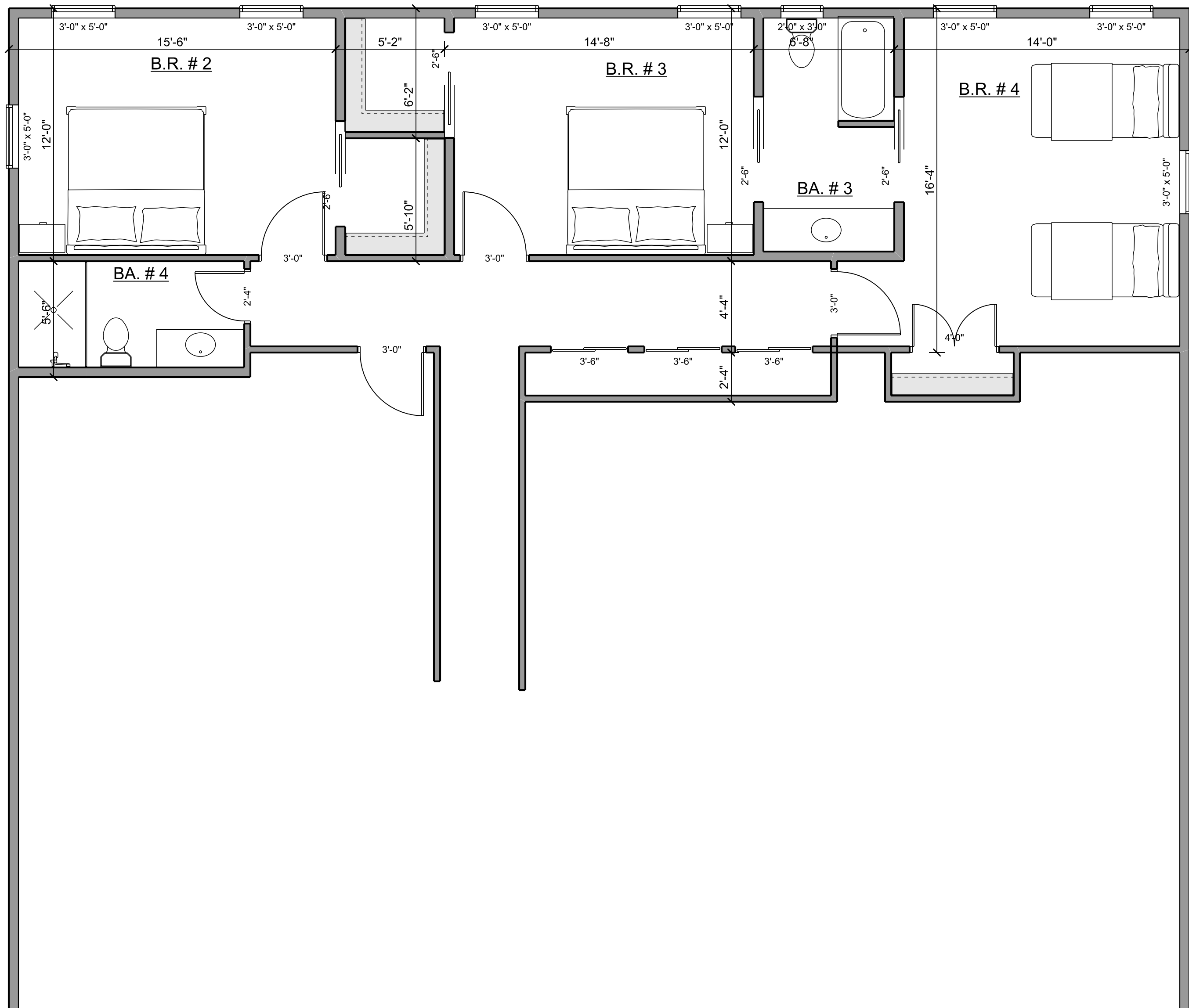
PRELEM # 2



CLARKE'S DESIGN SERVICE, LLC.
(985) 641-0531 WWW.CLARKESDESIGN.COM

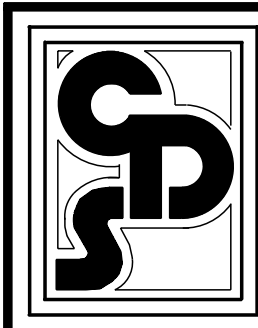


NOTE:
THIS DRAWING CONTAINS VALUABLE, CONFIDENTIAL, PROPRIETARY, TRADE SECRET INFORMATION OF CLARKE'S DESIGN SERVICE, LLC. NO REPRODUCTION OR OTHER USE OF THE DRAWING OR ANY OF ITS CONTENTS IS PERMITTED WITHOUT THE WRITTEN CONSENT OF CLARKE'S DESIGN SERVICE, (C) COPYRIGHT, 2011, AN UNPUBLISHED WORK BY CLARKE'S DESIGN SERVICE, LLC. ALL RIGHTS RESERVED.

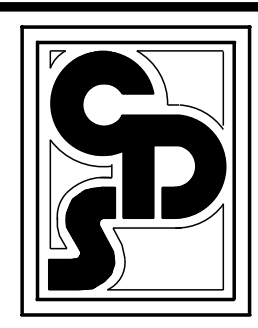


UPPER FLOOR PLAN
SCALE 1/4"=1'-0"

PLANS FOR:
MARK & MARTI
SHIFFER
PRELEM #



CLARKE'S DESIGN SERVICE, LLC.
(985) 641-0531 WWW.CLARKEDESIGN.COM



NOTE:
THIS DRAWING CONTAINS VALUABLE, CONFIDENTIAL, PROPRIETARY, TRADE SECRET INFORMATION OF CLARKE'S DESIGN SERVICE, LLC. NO REPRODUCTION OR OTHER USE OF THE DRAWING OR ANY OF ITS CONTENTS IS PERMITTED WITHOUT THE WRITTEN CONSENT OF CLARKE'S DESIGN SERVICE. (C) COPYRIGHT, 2011, AN UNPUBLISHED WORK BY CLARKE'S DESIGN SERVICE, LLC. ALL RIGHTS RESERVED.