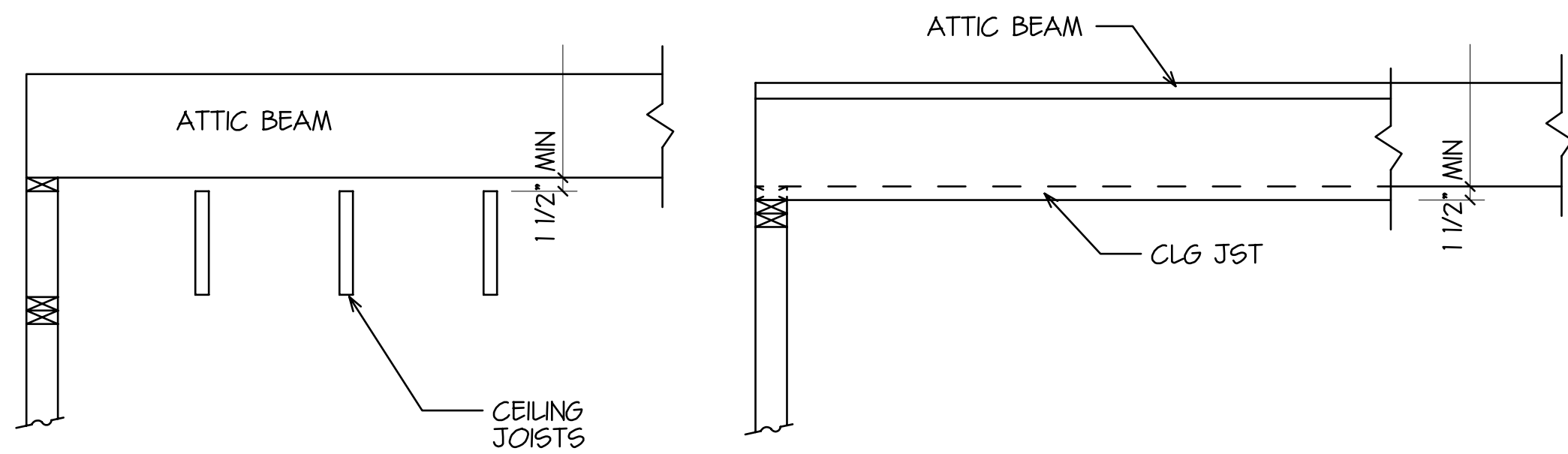


SHEAR WALL DETAIL
 ALL EXTERIOR WALLS SHALL BE SHEATHED
 SHEATH INTERIOR WALLS ONLY AS INDICATED ON PLANS
 NOTE: UPLIFT CONNECTORS NOT SHOWN

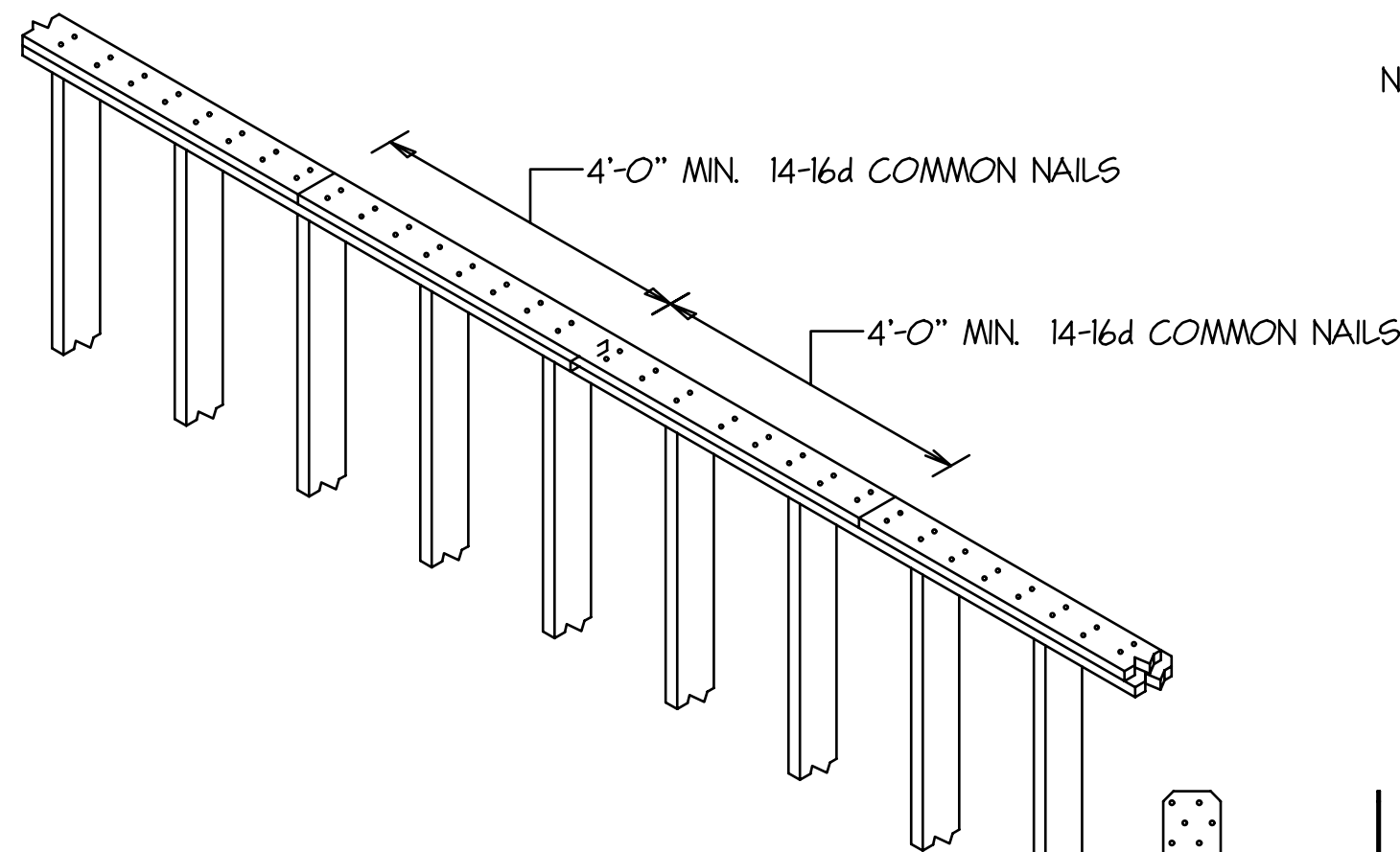
TYPICAL WINDOW OPENING DETAIL (DOOR OPENING SIMILAR)
 ALL EXTERIOR WALLS SHALL BE SHEATHED, NOT SHOWN
 SEE SHEAR WALL DETAIL FOR INFO NOT SHOWN
 RAFTERS NOT SHOWN, ANCHOR BOLTS NOT SHOWN
 CLIPS SHOWN ARE BASED UPON WINDOW LOCATION GREATER THAN 4FT FROM CORNER

HOLLOW COL. UPLIFT CONNECTION W/ PIPE
 NOTE: FOR 2 PIECE OR JOB BUILT HOLLOW COL. (HOLLOW COL. NOT SHOWN)

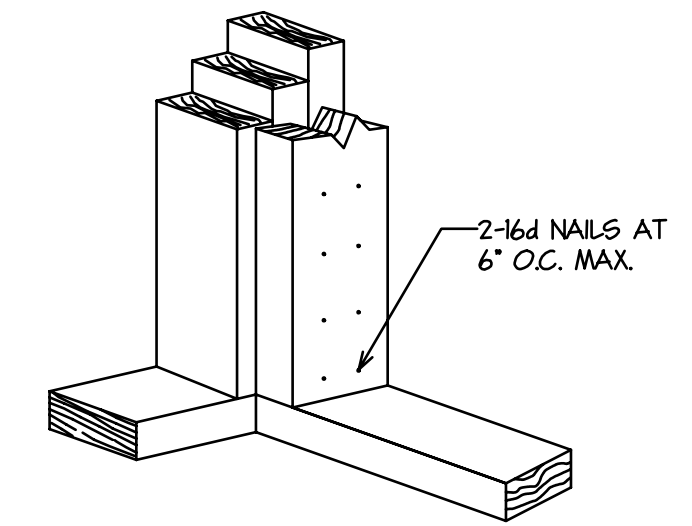
HOLLOW COL. UPLIFT CONNECTION
 PER SIMPSON TECHNICAL BULLETIN, INSTALLATION NO. 2
 NOTE: ABOVE DETAIL IS FOR 1 OR 2 PIECE LOAD BEARING HOLLOW COLUMNS.
 SEE ALT. HOLLOW COL. DETAIL FOR 2 PIECE HOLLOW COLUMNS.
 NON-LOAD BEARING HOLLOW COLUMNS SHALL HAVE A 6x6 POST (MIN) AND SIMPSON ABU66 BASE AND SIMPSON CC CAP



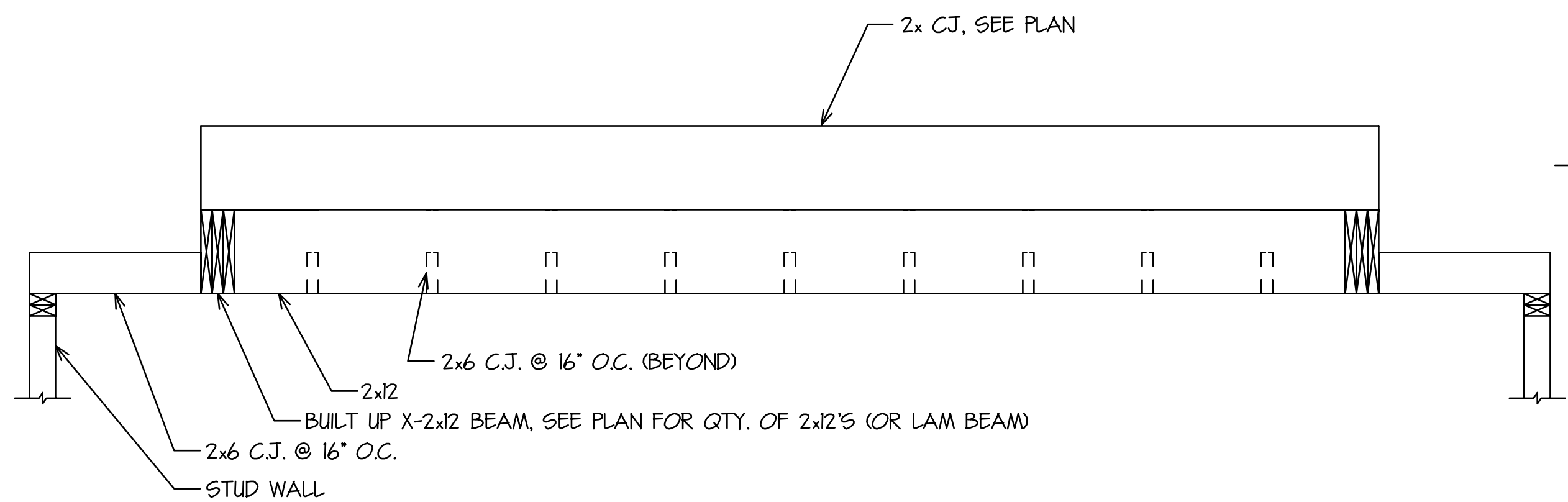
ATTIC BEAM DETAIL
 SCALE - 3/4" = 1'-0"



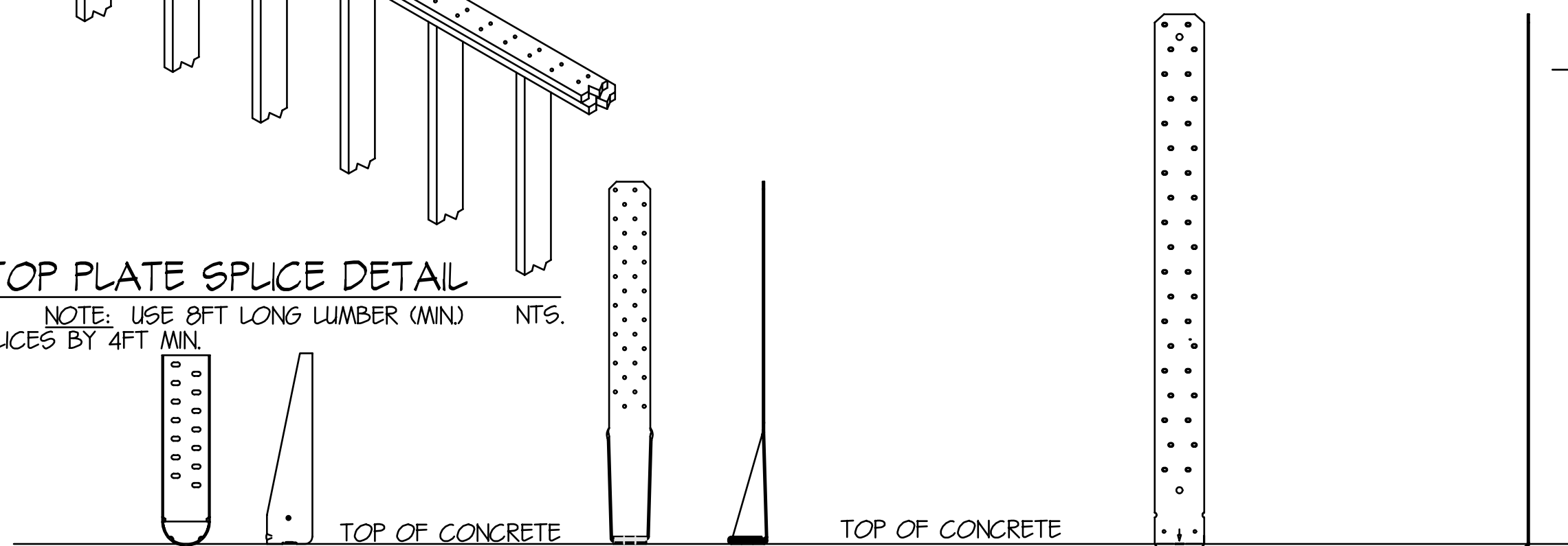
TYPICAL TOP PLATE SPLICE DETAIL
 NOTE: USE 8FT LONG LUMBER (MIN) & OFFSET SPLICES BY 4FT MIN.



TYPICAL BUILT UP CORNER POST DETAIL
 ANCHOR BOLTS NOT SHOWN



TYPICAL SECTION THRU STEP CEILING
 NOTE: VENEERS & INSULATION NOT SHOWN. DO NOT SHEATH STEP CEILING JOISTS FOR STORAGE. STORAGE ON STEP CEILING NOT ALLOWED.
 SCALE - 3/4" = 1'-0"



SIMPSON HOLD DOWN CONNECTORS
 (SEE DRAWING S-11 FOR LOCATIONS)

Although every effort has been made in preparing these plans, the contractor must check all details for accuracy or errors and be responsible for same. Purchaser assumes the risk of any errors, omissions or mistakes during construction due to the fact that DesignTech does not perform field supervision nor select building materials sub-contractors and/or products/equipment. All notes, specifications and other information on the plans are included as instructed by and/or with the approval of Purchaser and without warranty of any kind whatsoever. PLANS HAVE BEEN PREPARED FOR USE BY KNOWLEDGEABLE AND EXPERIENCED, LICENSED CONTRACTORS. This drawing contains valuable, confidential, proprietary, trade secret information of DesignTech Residential Planners, Inc. No reproduction or other use of the drawing or any of its contents is permitted without consent of DesignTech Residential Planners, Inc.

STRUCTURAL STANDARDS			
PLANS FOR: ROBERT "FRANKIE" CHEEK 81 LAFITTE STREET MANDEVILLE, LA			
DesignTech Residential Planners, Inc. St. Tammany Parish, LA.			DATE 5-3-18
COVINGTON 985-871-7211		SLIDELL 985-847-0600	
CODE	LIVING	AREA U.B.	INDEX
R	84	84	11478
DESIGNED BY DMH	DRAWN BY DMH	CHECKED BY DMH	
©Copyright 2017, an published work by DesignTech Residential Planners, Inc. ALL RIGHTS RESERVED.			S-2
EMAIL: houseplans@designtechusa.com			