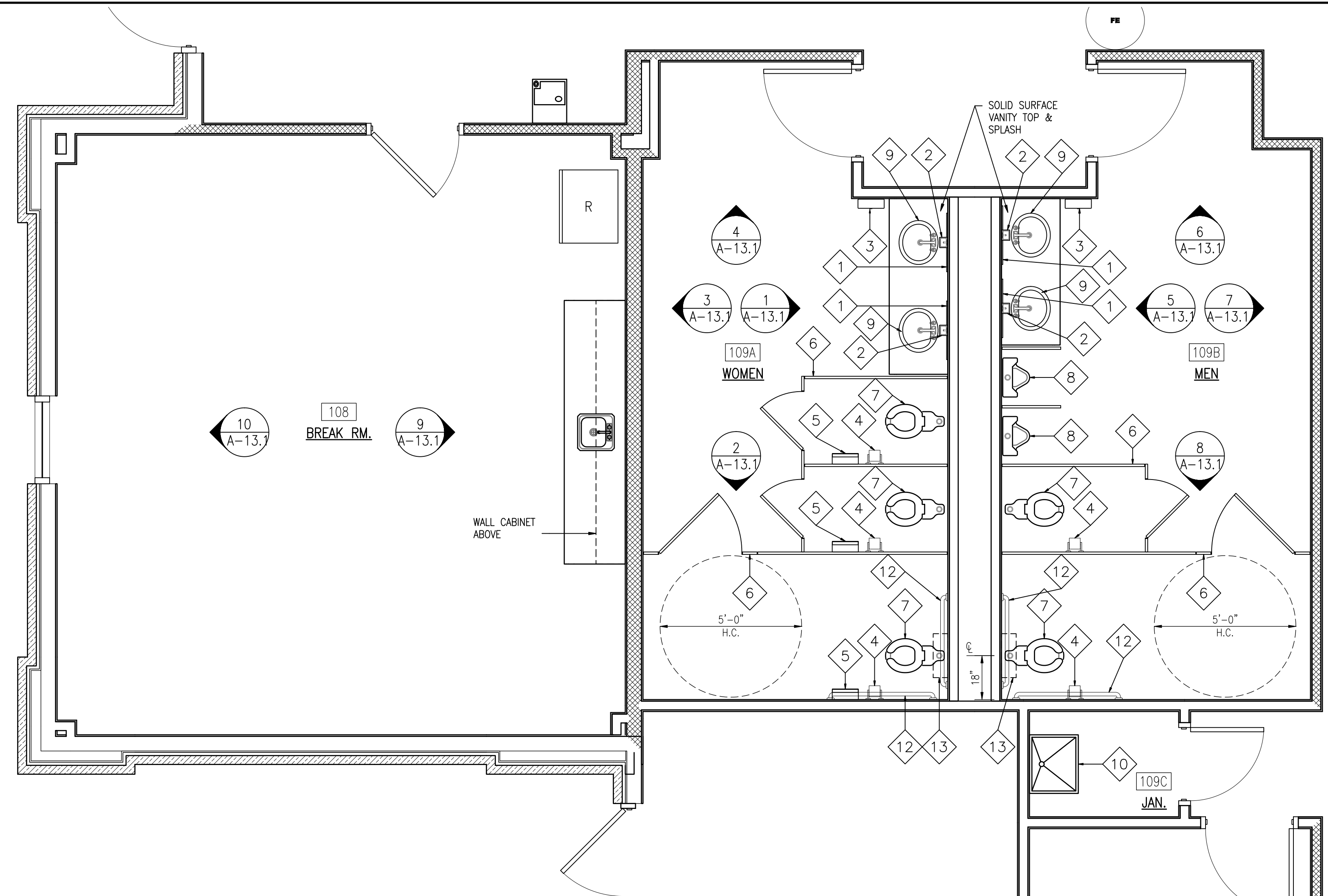


**TYPICAL H.C. TOILET DETAIL**

SCALE: 3/4" = 1'-0"



**ENLARGED PLAN**

SCALE: 3/8" = 1'-0"

A-02 **1**

**ACCESSORIES SCHEDULE**

NO.	DESCRIPTION	MANUFACTURER	MODEL	QUANTITY	REMARKS
1	MIRROR			4	
2	SOAP DISH			4	
3	PAPER TOWEL DISPENSER WITH WASTE RECEPTACLE			2	
4	TOILET TISSUE DISPENSER			5	PROVIDE BLOCKING AT WALL AS REQ'D.
5	SANITARY NAPKIN DISPOSER			3	PROVIDE BLOCKING AT WALL AS REQ'D.
6	TOILET PARTITION			-	CEILING MOUNTED - PROVIDE BLOCKING AT WALLS AND CEILING
7	WATER CLOSET			5	
8	URINAL			2	
9	LAVATORY			4	
10	MOP SINK			1	PROVIDE BLOCKING AT WALL AS REQ'D.
11	INSULATION COVER			-	
12	H.C. GRAB BARS			4	PROVIDE BLOCKING AT WALL AS REQ'D.
13	SHELVING			2	PROVIDE BLOCKING AT WALL AS REQ'D.
<b>NOTE:</b>					

**BROADMOOR**  
BUILDING by DESIGN  
BROADMOOR, L.L.C.  
2740 North Acorn Road  
Metairie, Louisiana 70002  
www.broadmoorllc.com

REV.	DESCRIPTION	DATE	APPROVED
0	FINAL DESIGN	07/29/09	P.S.

N/S JRB New Orleans  
Belle Chasse, Louisiana  
**NAVAIRSEFAC CALIBRATION BLDG.**  
TOILET ENLARGED PLAN  
AND ACCESSORIES SCHEDULE  
DATE: AUGUST 22, 2008  
ETD FOR COMMANDER, NAVFAC

**NAVAIRSEFAC**  
Naval Facilities Engineering Command  
Southeast Division, Jacksonville, FL

ISSUED BY:  
Waldemar S. Nelson & Co.  
**FINAL DESIGN**  
29 / OCT / 2009

RECORD DRAWING DATE	05/27/09
CODE I.D. NO.	-
DRAWING SIZE	D
SPEC. NO. 06-	-
CONSTRN. CONTR. NO.	-
NAVFAC DRAWING NO.	15030909
SHEET 21 OF	26

**Nelson** WALDEMAR S. NELSON AND COMPANY  
ENGINEERS AND ARCHITECTS  
1200 ST. CHARLES AVE. NEW ORLEANS, LA.

A-13