

# AS-BUILT SEWER SYSTEM RENOVATION BRIDGE CITY CENTER FOR YOUTH

PROJECT NO.: 08-403-11-01 PART-01  
 & 08-403-04B-01 PART-20  
 & 01-107-06B-11 PART U7

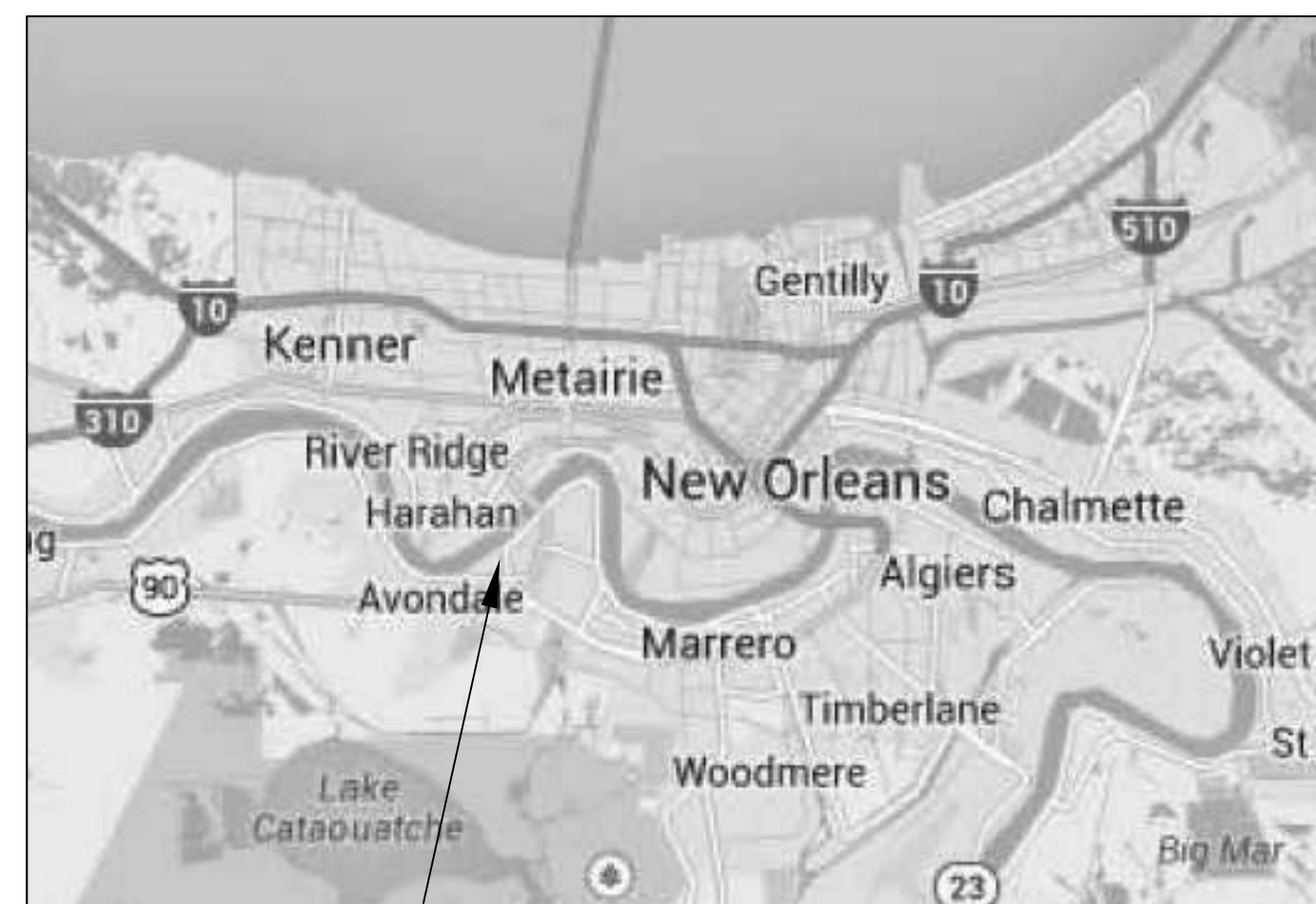
SITE CODE 1-26-004  
 3225 RIVER ROAD  
 BRIDGE CITY, LA 70094



STATE OF LOUISIANA  
 JOHN BEL EDWARDS  
 GOVERNOR

DIVISION OF ADMINISTRATION  
 JAY DARDENNE  
 COMMISSIONER OF ADMINISTRATION

OFFICE OF FACILITY PLANNING AND CONTROL  
 MARK MOSES  
 DIRECTOR



AREA OF WORK  
 VICINITY MAP  
 N.T.S.

INDEX OF DRAWINGS		
SHT#	DWG#	DRAWING NAME
01	CS	COVERSHEET
02	C1	SITE PLAN
03	C1.1	PARTIAL SITE PLAN
04	C1.2	PARTIAL SITE PLAN
05	C1.3	PARTIAL SITE PLAN
06	C1.4	PARTIAL SITE PLAN
07	C1.5	PARTIAL SITE PLAN
08	C1.6	PARTIAL SITE PLAN
09	C1.7	PARTIAL SITE PLAN
10	C1.8	PARTIAL SITE PLAN
11	C2	SEWER DETAILS
12	C3	LIFT STATION DETAILS
13	E1	LIFT STATION ELECTRICAL PLAN
14	E2	LIFT STATION CONTROLS

**DAMMON**  
 ENGINEERING, INC.  
 554 Old Spanish Trail Street, LA 70458 (985) 649-5832  
 www.dammonengineering.com  
 info@dammonengineering.com  
 PH: 985.649.5832

Chief Engineer: Brian Mitch, PE  
 554 Old Spanish Trail  
 Slidell, LA 70458

**AS-BUILT**



SEWER SYSTEM RENOVATION:  
 PROJECT NUMBERS: 08-403-11-01 PART 1 &  
 08-403-04B-01, PART 20 & 01-107-06B-11, Part U7  
 BRIDGE CITY CENTER FOR YOUTH

3225 RIVER ROAD  
 BRIDGE CITY, LA 70094  
 JOB No: 2156 DATE: 9/26/2019  
 DRAWN BY: DPF CHECKED BY: BM

SHEET TITLE:  
 COVER SHEET

DRAWING NUMBER:  
**CS**



**LEGEND**

- SSFM SEWER FORCE MAIN
- SS GRAVITY SEWER
- STORM WATER DRAINAGE
- W WATER (SHOWN BUT NOT VERIFIED)
- GAS --- GAS NATURAL GAS
- ○ SEWER CLEAN-OUT
- MH EXISTING MANHOLE
- 09 BLDG NUMBER

**DAMMON ENGINEERING, INC.**  
 554 Old Spanish Trail, Suite 101, Slidell, LA 70468  
 (985) 649-5832  
 www.dammonengineering.com  
 info@dammonengineering.com  
 Chief Engineer: Brian Mistich, PE  
 554 Old Spanish Trail  
 Slidell, LA 70468

# AS-BUILT

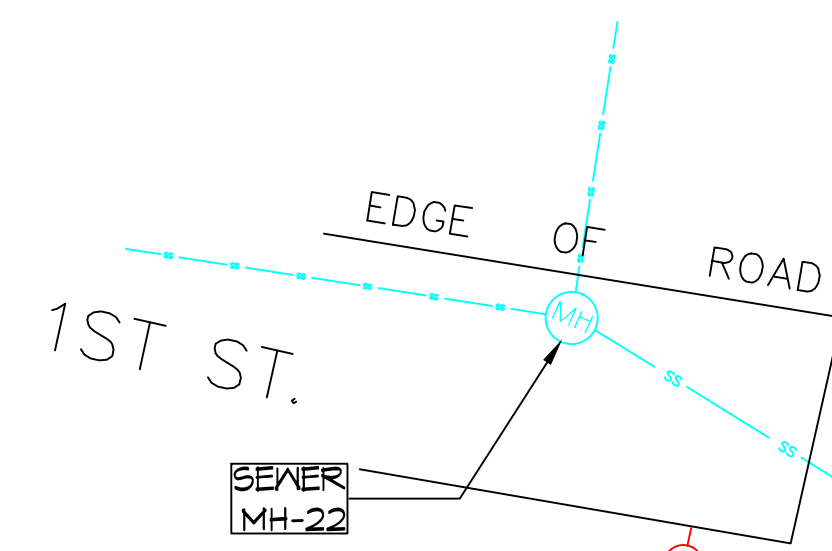


SEWER SYSTEM RENOVATION;  
 PROJECT NUMBERS: 08-408-11-01 PART 1 &  
 08-408-04B-01, PART 20 & 01-107-06B-11, PART U7  
**BRIDGE CITY CENTER FOR YOUTH**  
 3225 RIVER ROAD  
 BRIDGE CITY, LA 70094  
 JOB NO.: 2156 DATE: 9/26/2018  
 DRAWN BY: PFD CHECKED BY: BAC

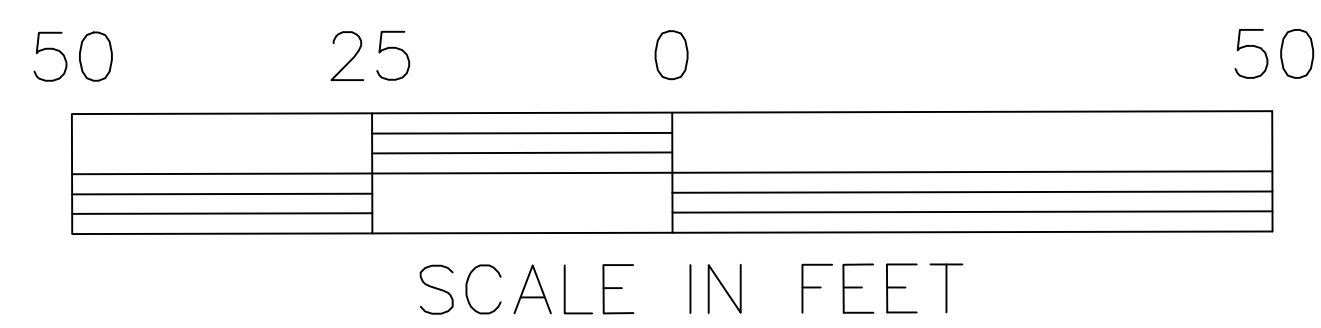
SHEET TITLE:  
 SITE PLAN

DRAWING NUMBER:  
**C-1**  
 SHEET No: 2 of 14

**SITE PLAN**  
 SCALE: 1/64" = 1'-0"

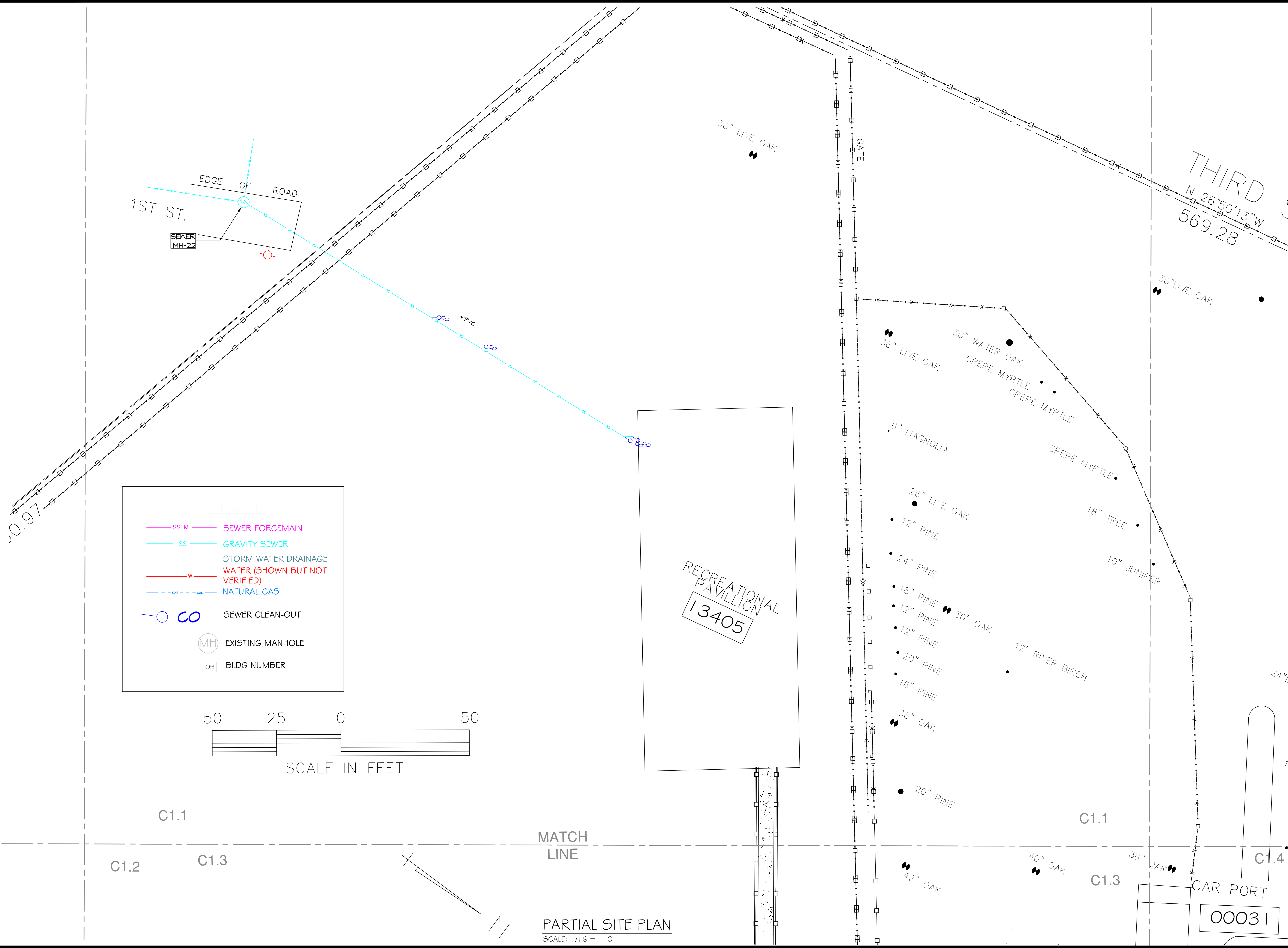


LEGEND	
	SSFM SEWER FORCEMAIN
	SS GRAVITY SEWER
	STORM WATER DRAINAGE
	W WATER (SHOWN BUT NOT VERIFIED)
	GAS NATURAL GAS
	SEWER CLEAN-OUT
	EXISTING MANHOLE
	BLDG NUMBER



MATCH LINE

PARTIAL SITE PLAN  
SCALE: 1/16" = 1'-0"



**DAMMON ENGINEERING, INC.**  
554 Old Spanish Trail Suidell, LA 70098  
www.dammonengineering.com  
info@dammonengineering.com  
PH: 985.646.5832

Chief Engineer: Brian Mistich, PE  
554 Old Spanish Trail Suidell, LA 70098

**AS-BUILT**



SEWER SYSTEM RENOVATION;  
PROJECT NUMBERS: 08-408-11-01 PART 1 & 08-408-04B-01, PART 20 & 01-107-06B-11, PART U7

**BRIDGE CITY CENTER FOR YOUTH**

3225 RIVER ROAD  
BRIDGE CITY, LA 70094

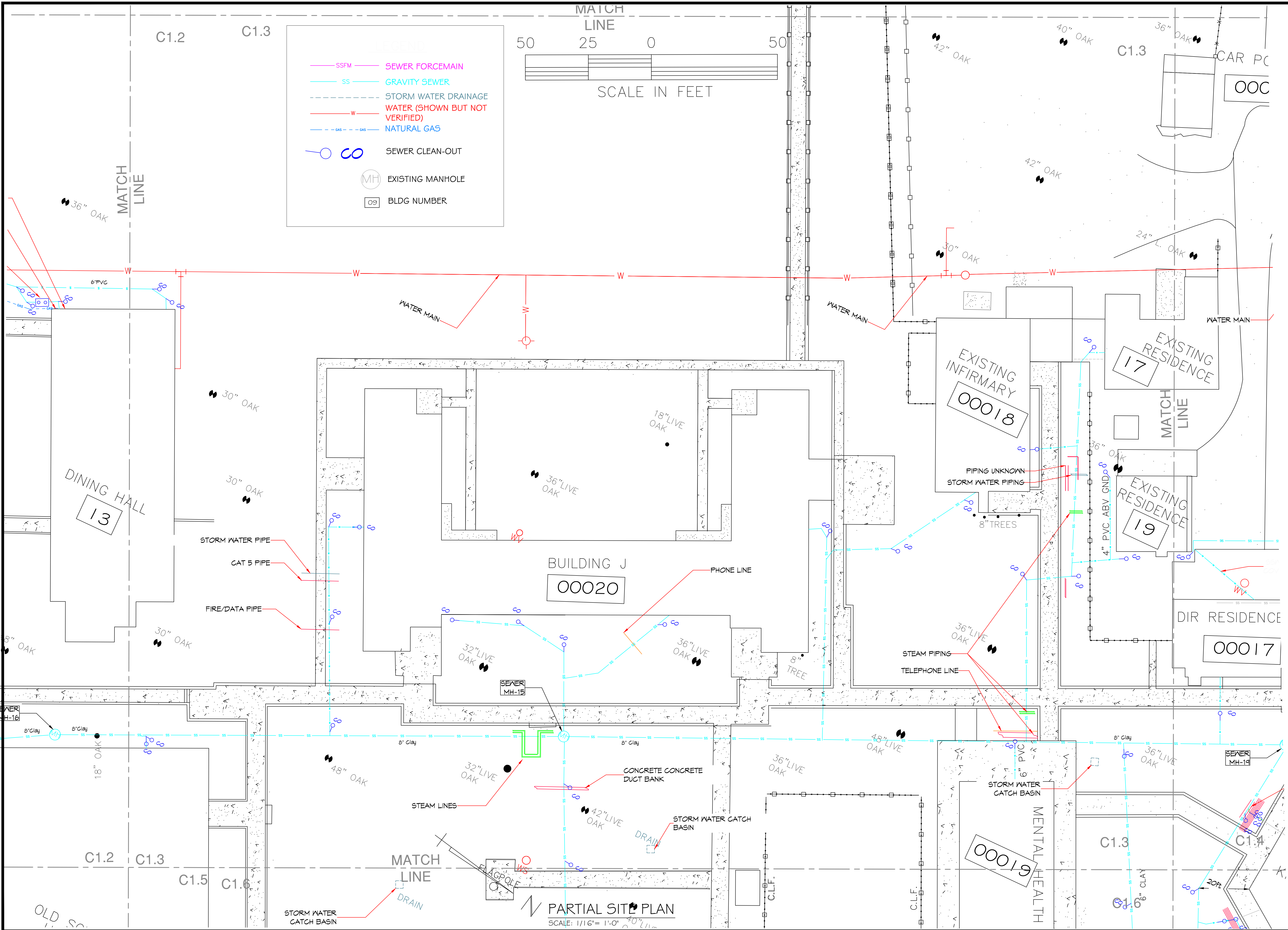
JOB NO: 2156 DATE: 9/26/2018  
DRAWN BY: BAK  
PFD CHECKED BY:

SHEET TITLE:  
SITE PLAN

DRAWING NUMBER:  
**C-1.1**

SHEET No: 5 of 14





**DAMMON ENGINEERING, INC.**  
554 Old Spanish Trail Slidell, LA 70668 (866) 649-5832  
www.dammonengineering.com  
info@dammonengineering.com

Chief Engineer: Brian Mistich, PE  
554 Old Spanish Trail  
Slidell, LA 70668

**AS-BUILT**



SEWER SYSTEM RENOVATION;  
PROJECT NUMBERS: 08-408-11-01 PART 1 &  
08-408-04B-01, PART 20 & 01-107-06B-11, Part 07

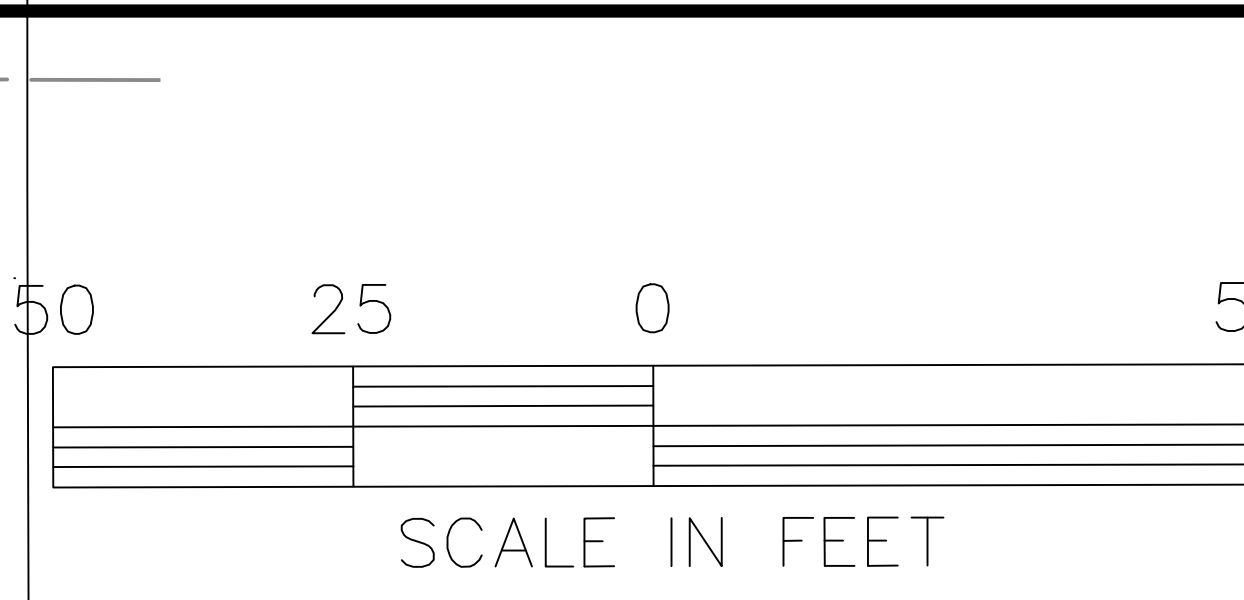
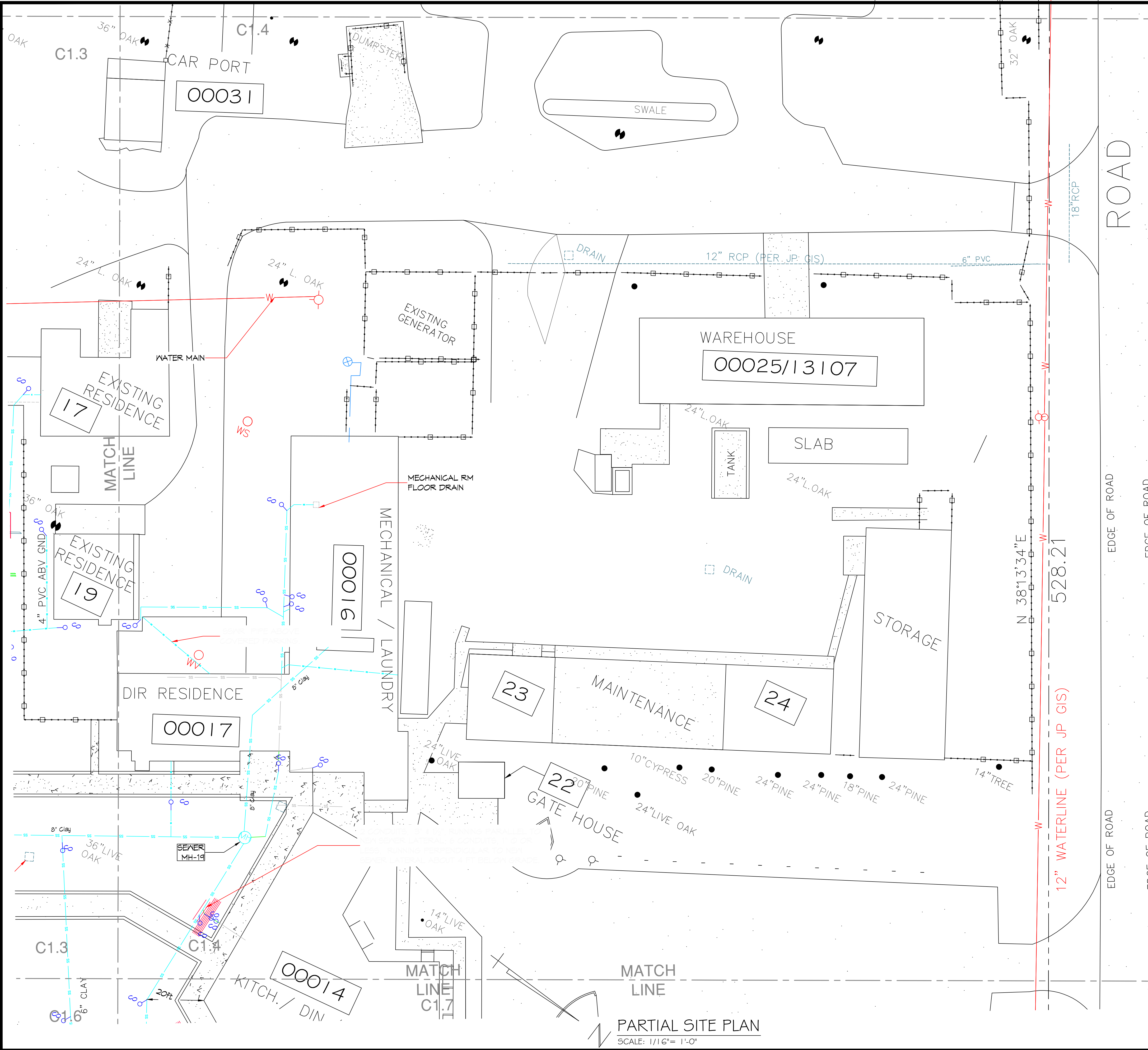
**BRIDGE CITY CENTER FOR YOUTH**

3225 RIVER ROAD  
BRIDGE CITY, LA 70004  
JOB NO: 2156 DATE: 9/26/2018  
DRAWN BY: PJPD CHECKED BY: BAK

SHEET TITLE:  
SITE PLAN

DRAWING NUMBER:  
**C-1.3**

SHEET No: 5 of 14



LEGEND

	SSFM	SEWER FORCE MAIN
	SS	GRAVITY SEWER
	W	WATER (SHOWN BUT NOT VERIFIED)
	GAS	NATURAL GAS
		SEWER CLEAN-OUT
	MH	EXISTING MANHOLE
	09	BLDG NUMBER

PARTIAL SITE PLAN  
SCALE: 1/16" = 1'-0"

**DAMMON ENGINEERING, INC.**  
654 Old Spanish Trail, Slidell, LA 70458  
(865) 649-5832  
www.dammonengineering.com  
info@dammonengineering.com  
Chief Engineer: Brian Mistich, PE  
554 Old Spanish Trail, Slidell, LA 70458

**AS-BUILT**

SEAL:

SEWER SYSTEM RENOVATION:  
PROJECT NUMBERS: 08-408-11-01 PART 1 & 08-408-04B-01, PART 20 & 01-107-06B-11, PART U7  
**BRIDGE CITY CENTER FOR YOUTH**  
3225 RIVERS ROAD  
BRIDGE CITY, LA 70044  
JOB No: 2158 DATE: 9/26/2018  
DRAWN BY: BAW  
CHECKED BY: DP2

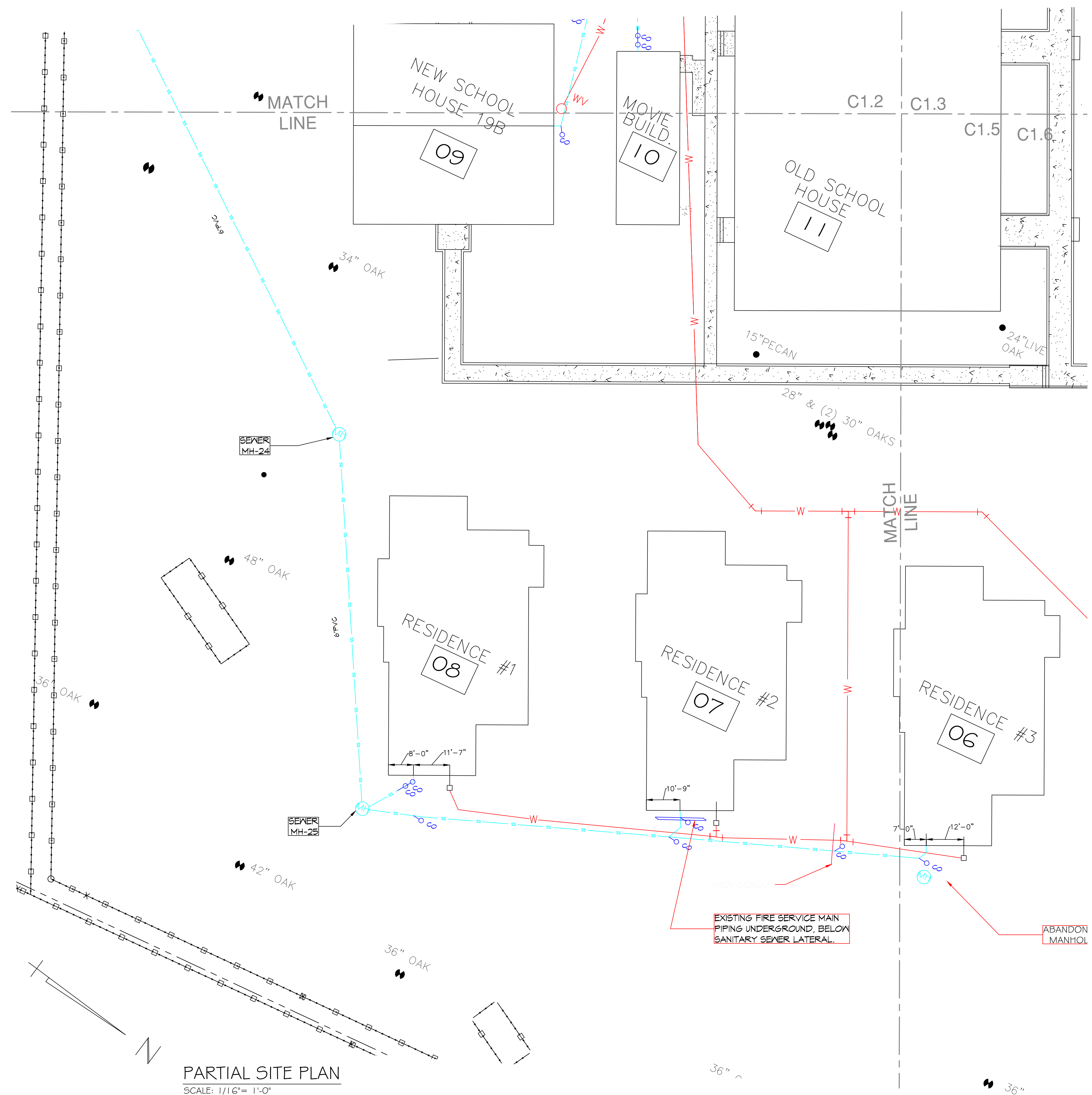
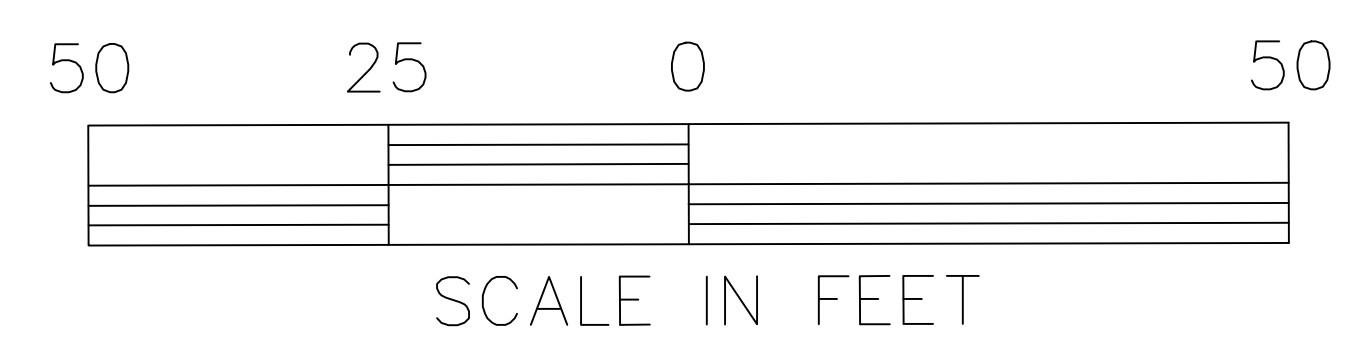
SHEET TITLE:  
SITE PLAN

DRAWING NUMBER:  
**C-1.4**

SHEET No: 6 of 14

**LEGEND**

- SSFM SEWER FORCEMAIN
- SS GRAVITY SEWER
- STORM WATER DRAINAGE
- W WATER (SHOWN BUT NOT VERIFIED)
- GAS --- NATURAL GAS
- ○ SEWER CLEAN-OUT
- (MH) EXISTING MANHOLE
- 09 BLDG NUMBER



**PARTIAL SITE PLAN**  
SCALE: 1/16" = 1'-0"

**DAMMON ENGINEERING, INC.**  
554 Old Spanish Trail, Slidell, LA 70458  
(985) 649-5832  
www.dammonengineering.com  
info@dammonengineering.com  
PH: 985.649.5832

Chief Engineer: Brian Mistich, PE  
554 Old Spanish Trail  
Slidell, LA 70458

**AS-BUILT**

SEAL:

SEWER SYSTEM RENOVATION;  
PROJECT NUMBERS: 08-408-11-01 PART 1 &  
08-408-04B-01, PART 20 & 01-107-06B-11, PART U7

**BRIDGE CITY CENTER FOR YOUTH**

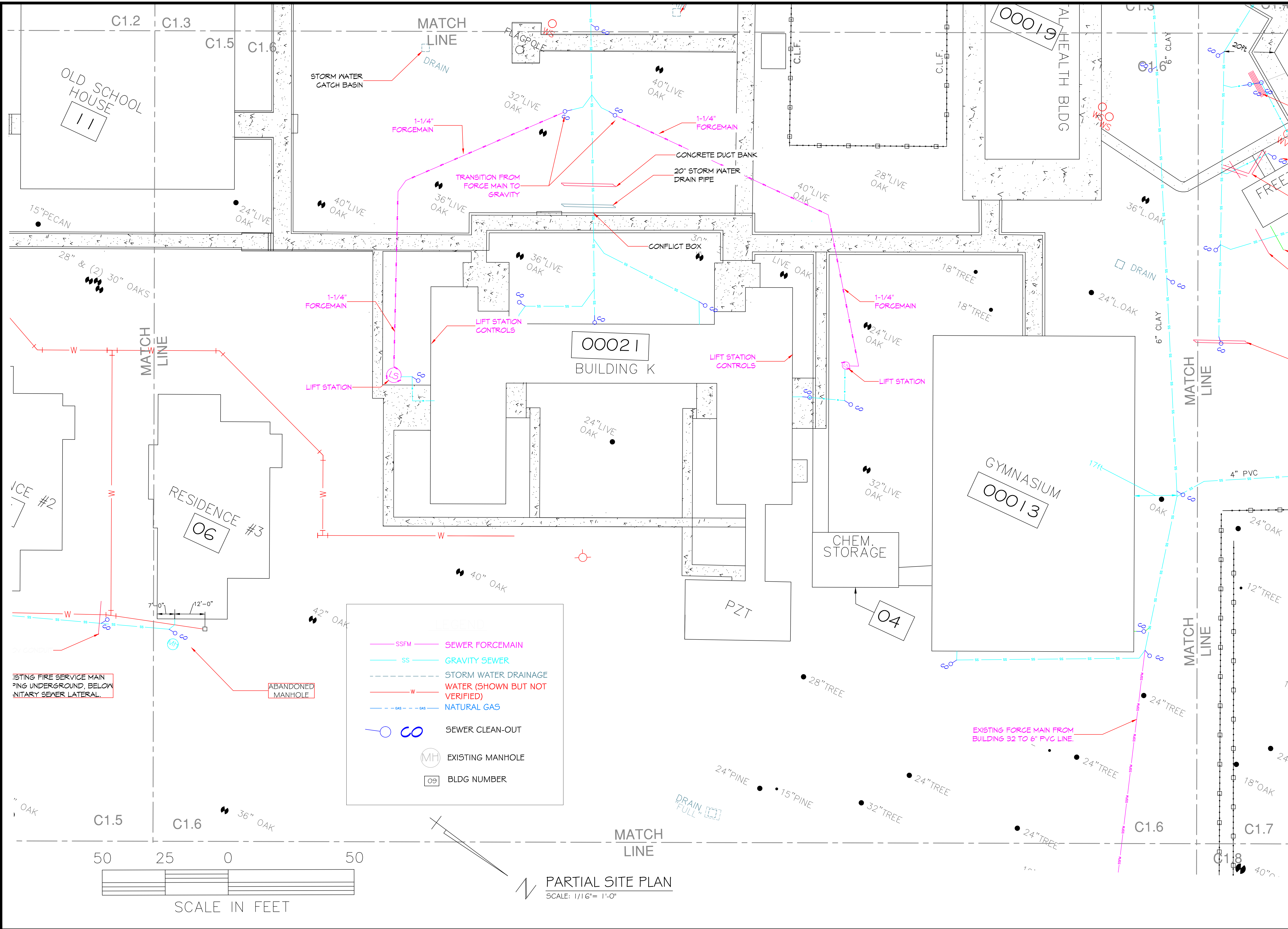
3225 RIVER ROAD  
BRIDGE CITY, LA 70094

JOB NO: 2156 DATE: 9/26/2018  
DRAWN BY: BAK  
PFD CHECKED BY:

SHEET TITLE:  
SITE PLAN

DRAWING NUMBER:  
**C-1.5**

SHEET No: 7 of 14

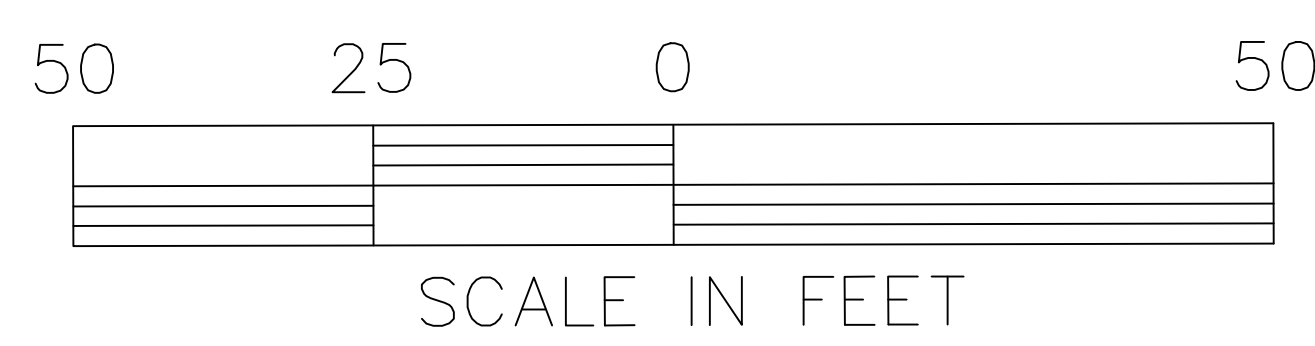


EXISTING FIRE SERVICE MAIN  
PING UNDERGROUND, BELOW  
INITIARY SEWER LATERAL.

ABANDONED  
MANHOLE

**LEGEND**

- SSFM SEWER FORCEMAIN
- SS GRAVITY SEWER
- STORM WATER DRAINAGE
- W — WATER (SHOWN BUT NOT VERIFIED)
- NATURAL GAS
- SEWER CLEAN-OUT
- MH EXISTING MANHOLE
- 09 BLDG NUMBER



**PARTIAL SITE PLAN**  
SCALE: 1/16" = 1'-0"

**DAMMON ENGINEERING, INC.**  
554 Old Spanish Trail, Suite 101, Metairie, LA 70002  
www.dammonengineering.com  
info@dammonengineering.com  
PH: 985.646.5632

Chief Engineer: Brian Mistich, PE  
554 Old Spanish Trail  
Suite 101, Metairie, LA 70002

**AS-BUILT**

SEAL:

SEWER SYSTEM RENOVATION;  
PROJECT NUMBERS: 08-408-11-01 PART 1 &  
08-408-04B-01, PART 20 & 01-107-06B-11, PART U7

**BRIDGE CITY CENTER FOR YOUTH**

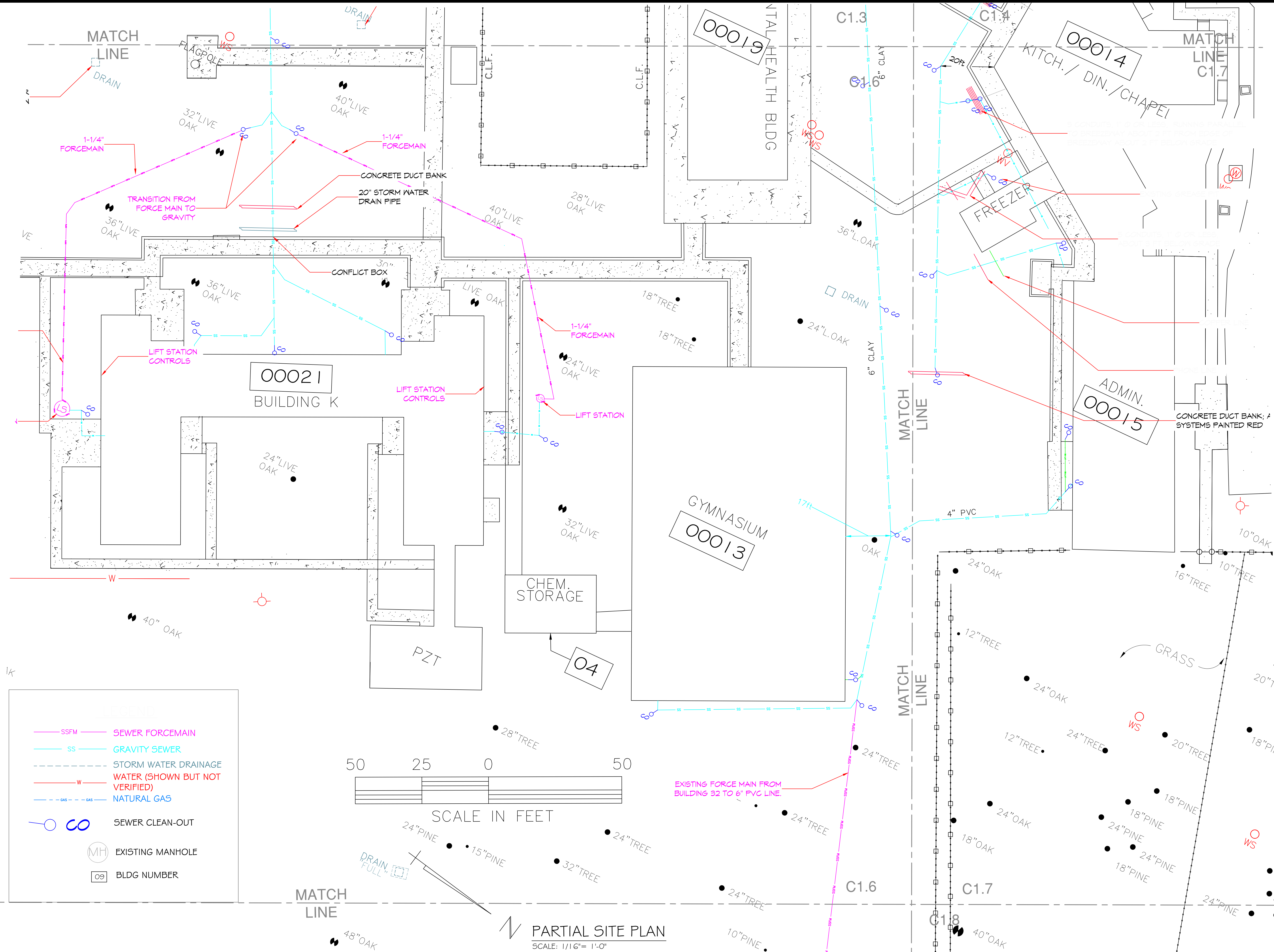
3225 RIVER ROAD  
BRIDGE CITY, LA 70094

JOB NO.: 2156 DATE: 9/26/2018  
DRAWN BY: BAC  
PFD CHECKED BY:

SHEET TITLE:  
SITE PLAN

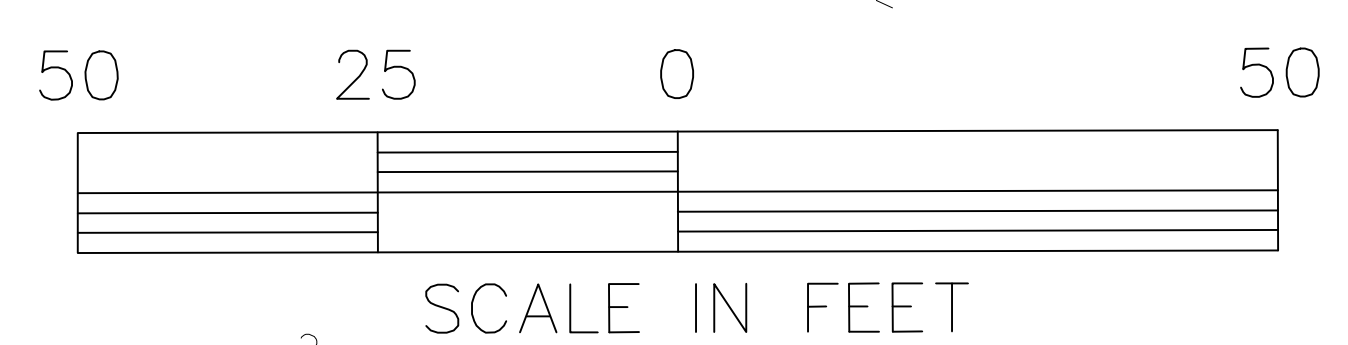
DRAWING NUMBER:  
**C-1.6**

SHEET No: 5 of 14



**LEGEND**

	SSFM	SEWER FORCEMAIN
	SS	GRAVITY SEWER
		STORM WATER DRAINAGE
	W	WATER (SHOWN BUT NOT VERIFIED)
	GAS	NATURAL GAS
		SEWER CLEAN-OUT
		EXISTING MANHOLE
		BLDG NUMBER



**PARTIAL SITE PLAN**  
SCALE: 1/16" = 1'-0"

**DAMMON ENGINEERING, INC.**  
554 Old Spanish Trail, Suite 101, Metairie, LA 70002  
www.dammonengineering.com  
info@dammonengineering.com  
PH: 985.646.5632

Chief Engineer: Brian Mistich, PE  
554 Old Spanish Trail, Suite 101, Metairie, LA 70002

**AS-BUILT**



SEWER SYSTEM RENOVATION;  
PROJECT NUMBERS: 08-408-11-01 PART 1 & 08-408-04B-01, PART 20 & 01-107-06B-11, PART U7

**BRIDGE CITY CENTER FOR YOUTH**

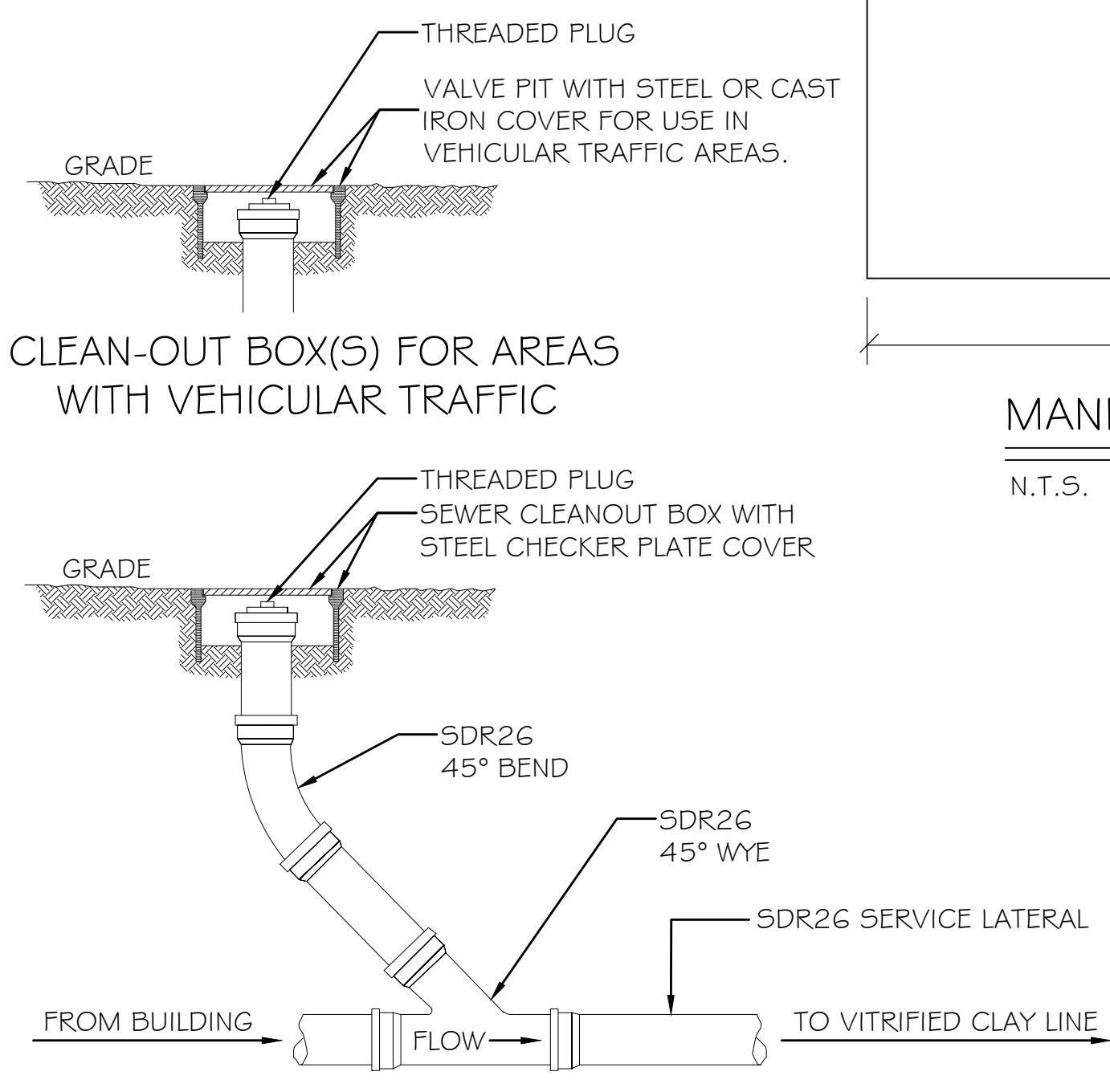
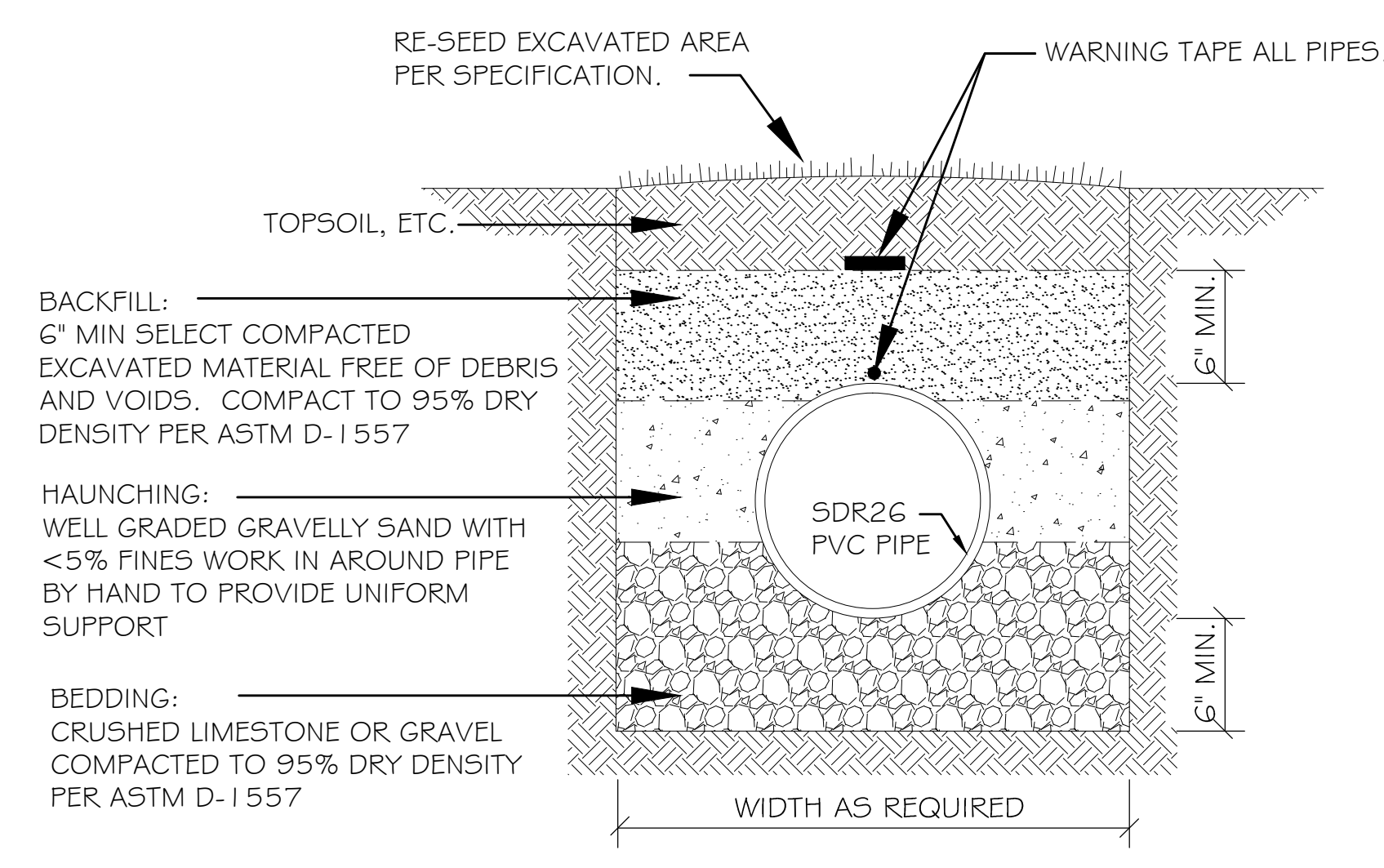
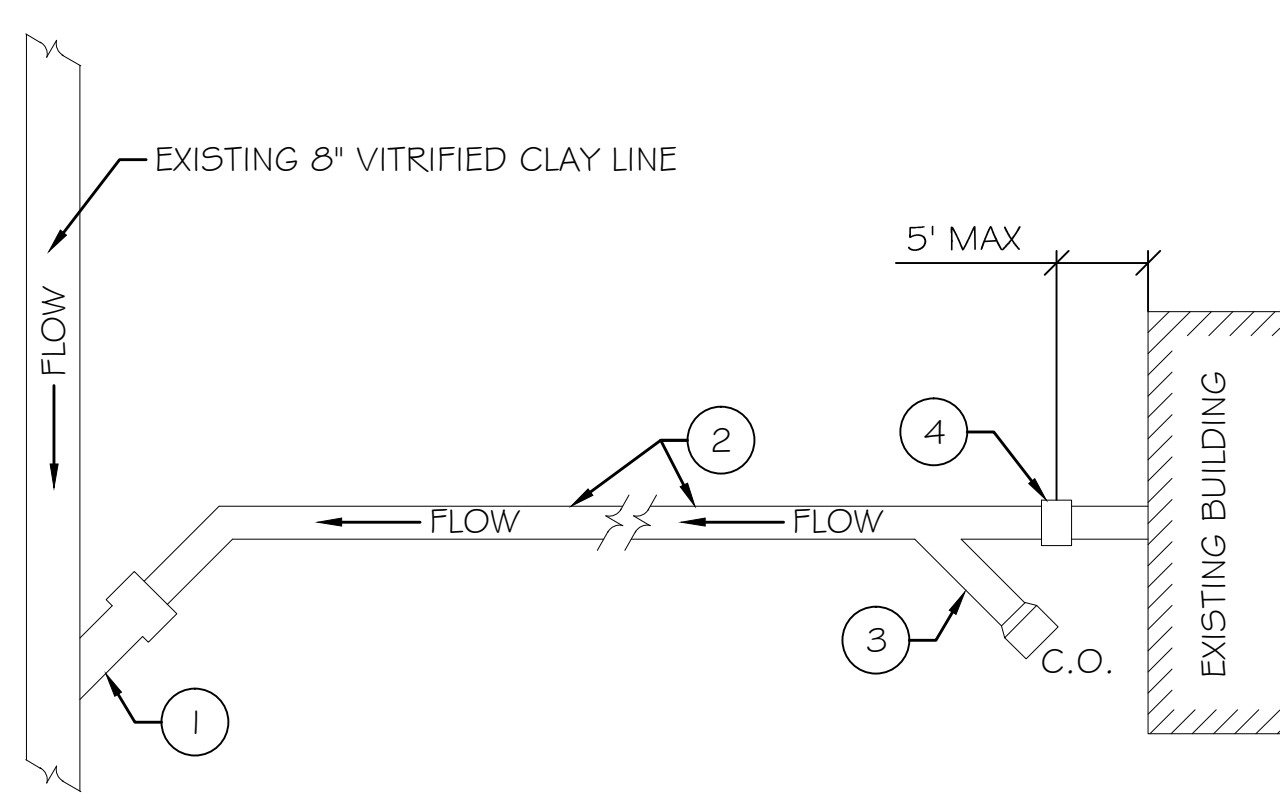
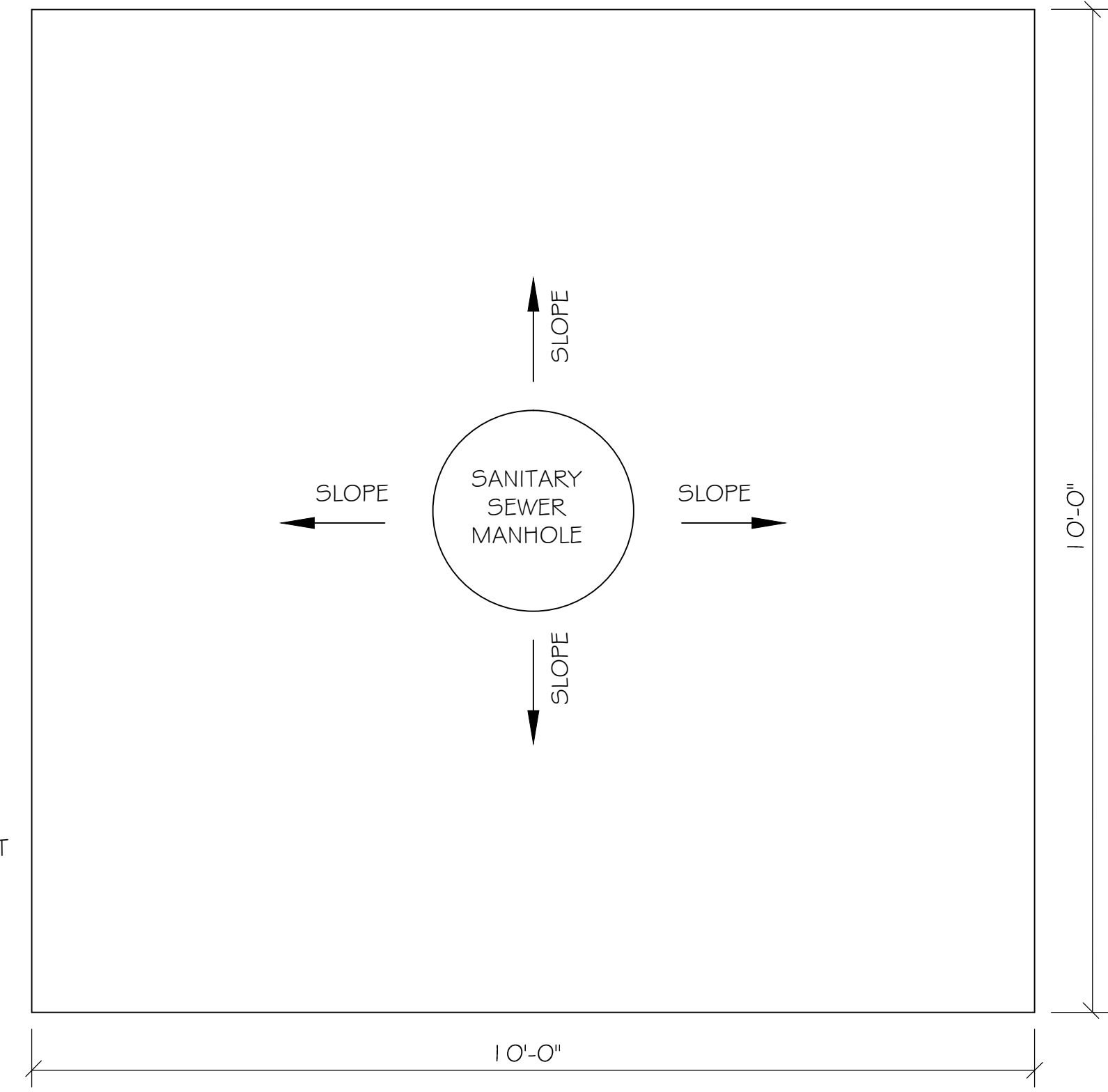
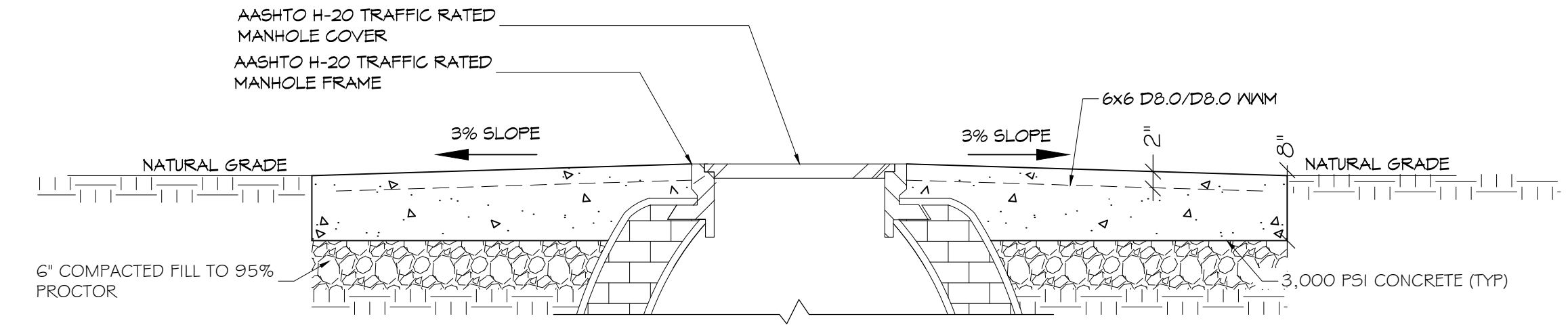
3225 RIVER ROAD, BRIDGE CITY, LA 70094  
JOB NO.: 2156 DATE: 9/26/2018  
DRAWN BY: BAC  
PDP CHECKED BY:

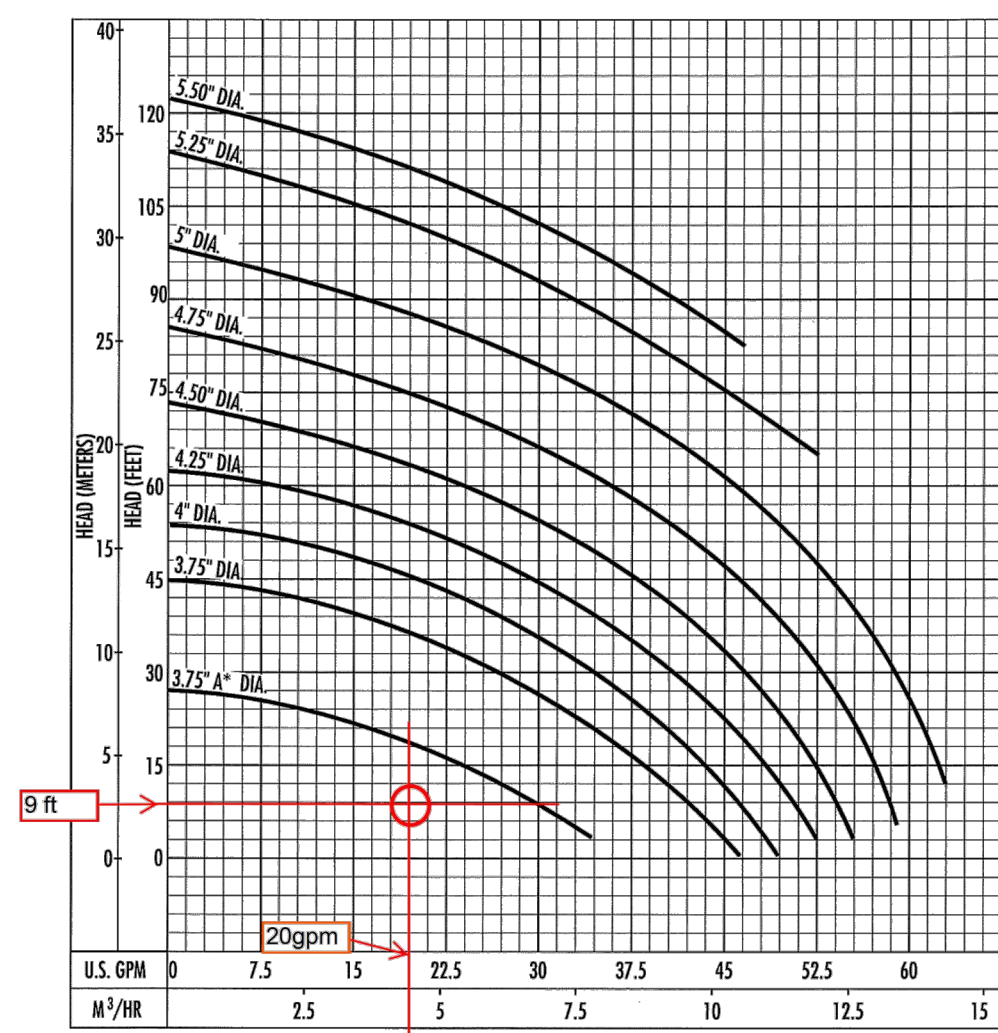
SHEET TITLE: SITE PLAN

DRAWING NUMBER:  
**C-1.7**

SHEET No: 14 of 14



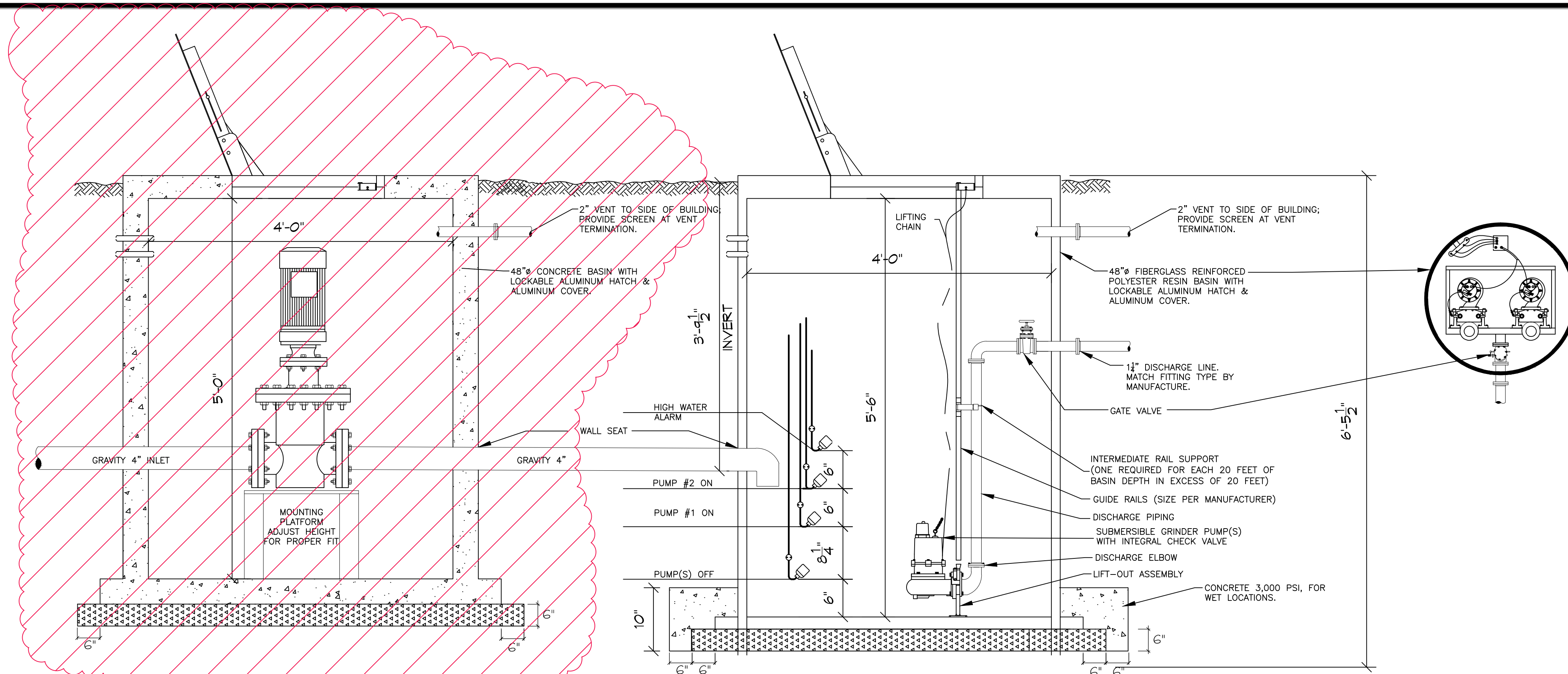




The curves reflect maximum performance characteristics without exceeding full load (Nameplate) horsepower. All pumps have a service factor of 1.2. Operation is recommended in the bounded area with operational point within the curve limit. Performance curves are based on actual tests with clear water at 70° F. and 1280 feet site elevation.

GRINDER PUMP  
N.T.S. PENTAIR GRINDER PUMP, HPG200, CURVE C7

5  
C7



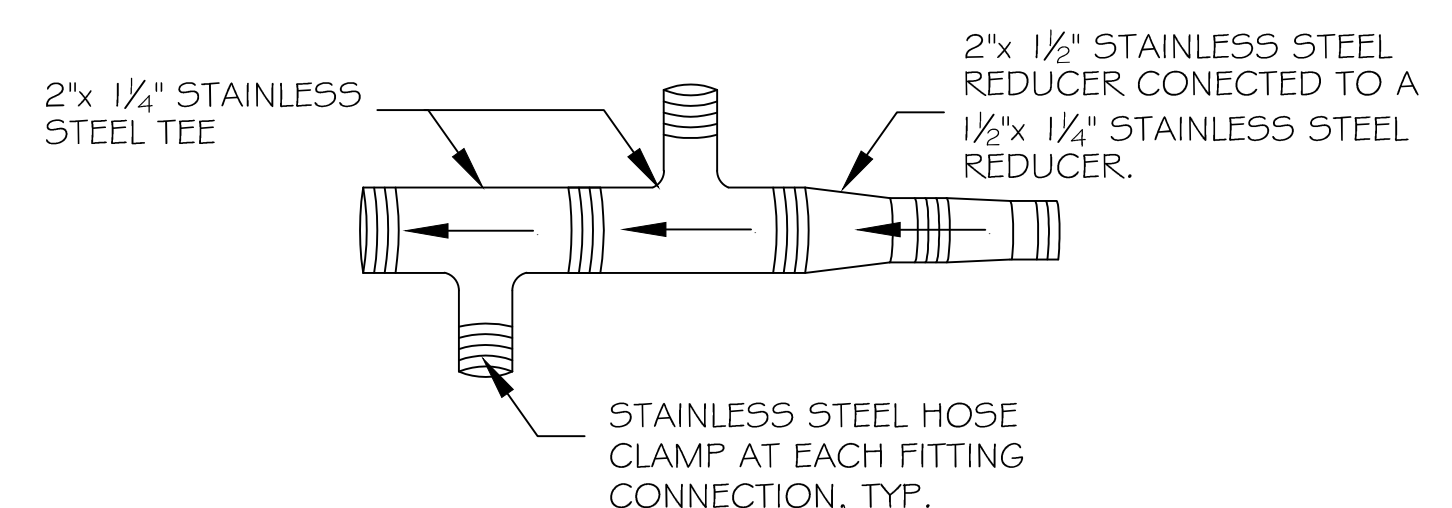
PUMP DATA  
DUPLX GRINDER PUMP  
20 GPM @ 9 TDH

GRINDER UNIT FUTURE EXPANSION

DUPLX LIFT STATION DETAIL

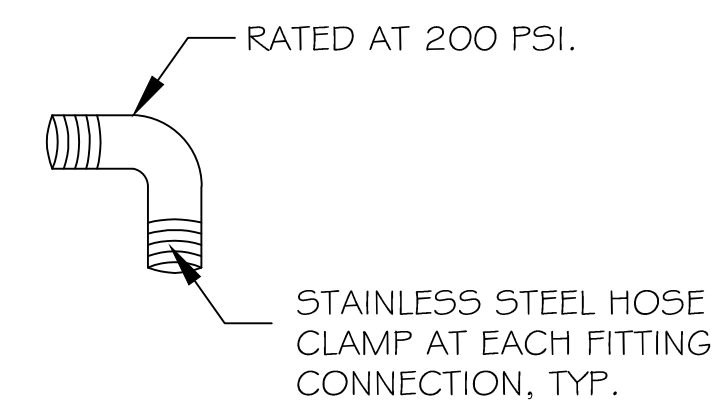
N.T.S.

4  
C7



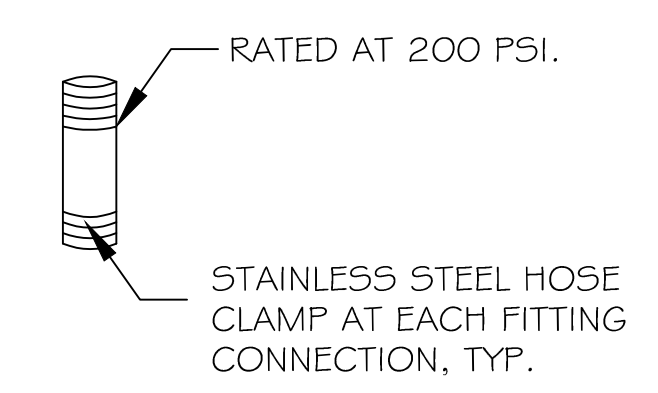
MULIPLE FORCE MAIN CONNECTIONS  
N.T.S.

1  
C7



FORCE MAIN 1/4\"/>

2  
C7



FORCE MAIN 1/4\"/>

3  
C7

**DAMMON ENGINEERING, INC.**  
554 Old Spanish Trail, Suite 101, Slidell, LA 70458  
www.dammonengineering.com  
info@dammonengineering.com  
PH: 985.646.5632

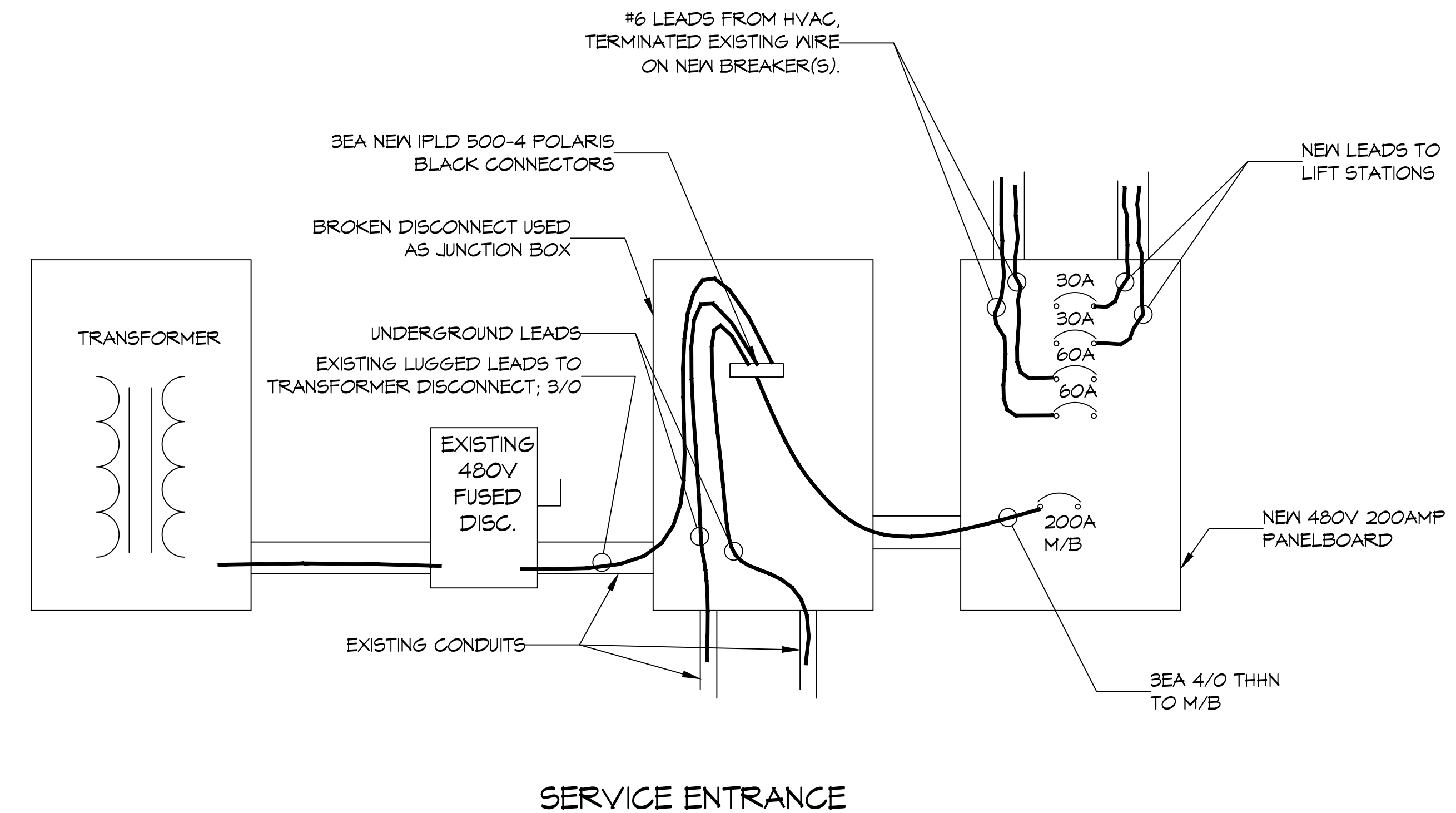
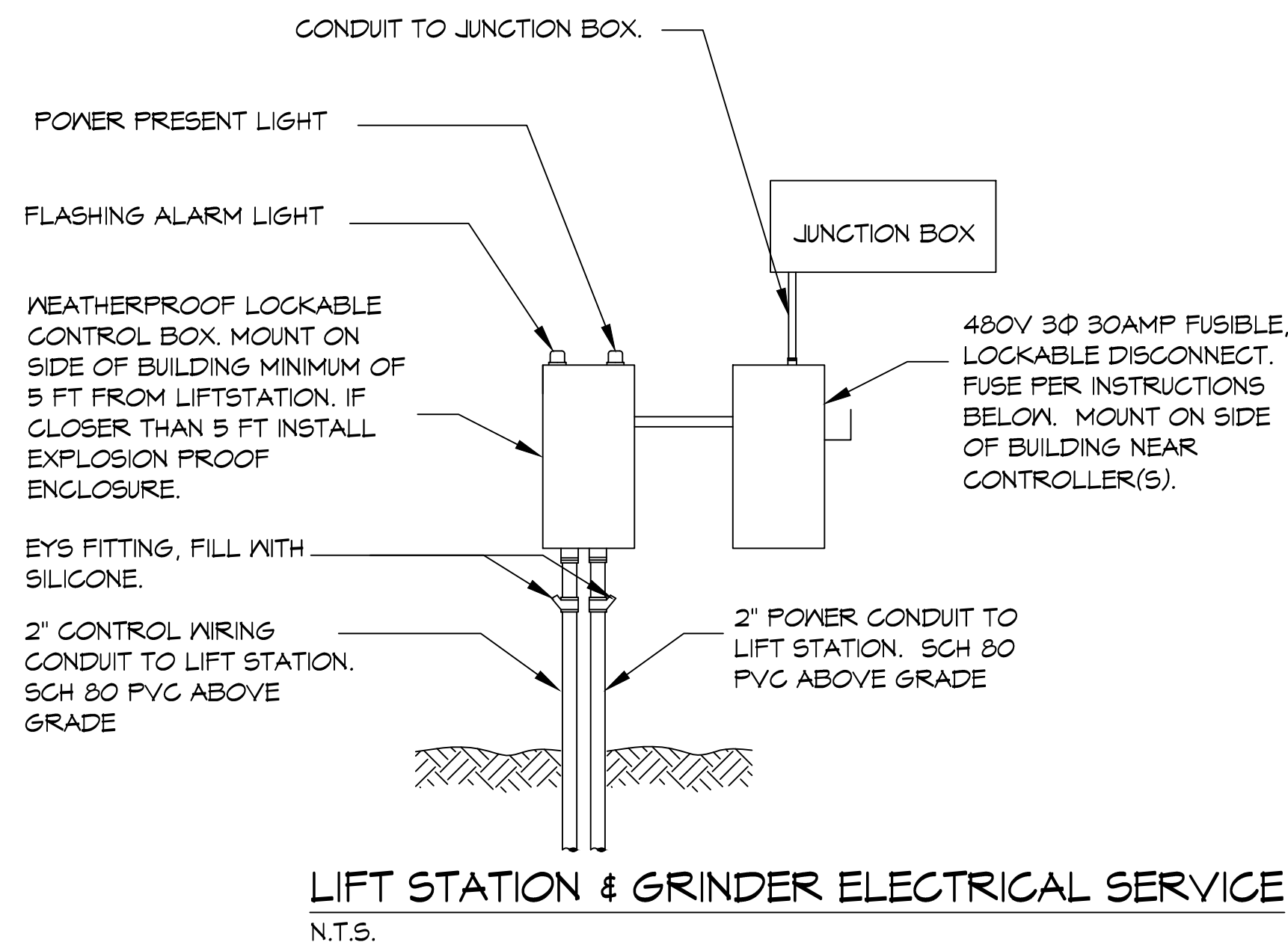
**AS-BUILT**

SEAL:

SEWER SYSTEM RENOVATION:  
PROJECT NUMBERS: 08-408-11-01 PART 1 & 08-408-04B-01, PART 20 & 01-107-06B-11, PART U7  
**BRIDGE CITY CENTER FOR YOUTH**  
3225 RIVER ROAD  
BRIDGE CITY, LA 70094  
JOB NO: 2156 DATE: 9/26/2018  
DRAWN BY: [Signature]

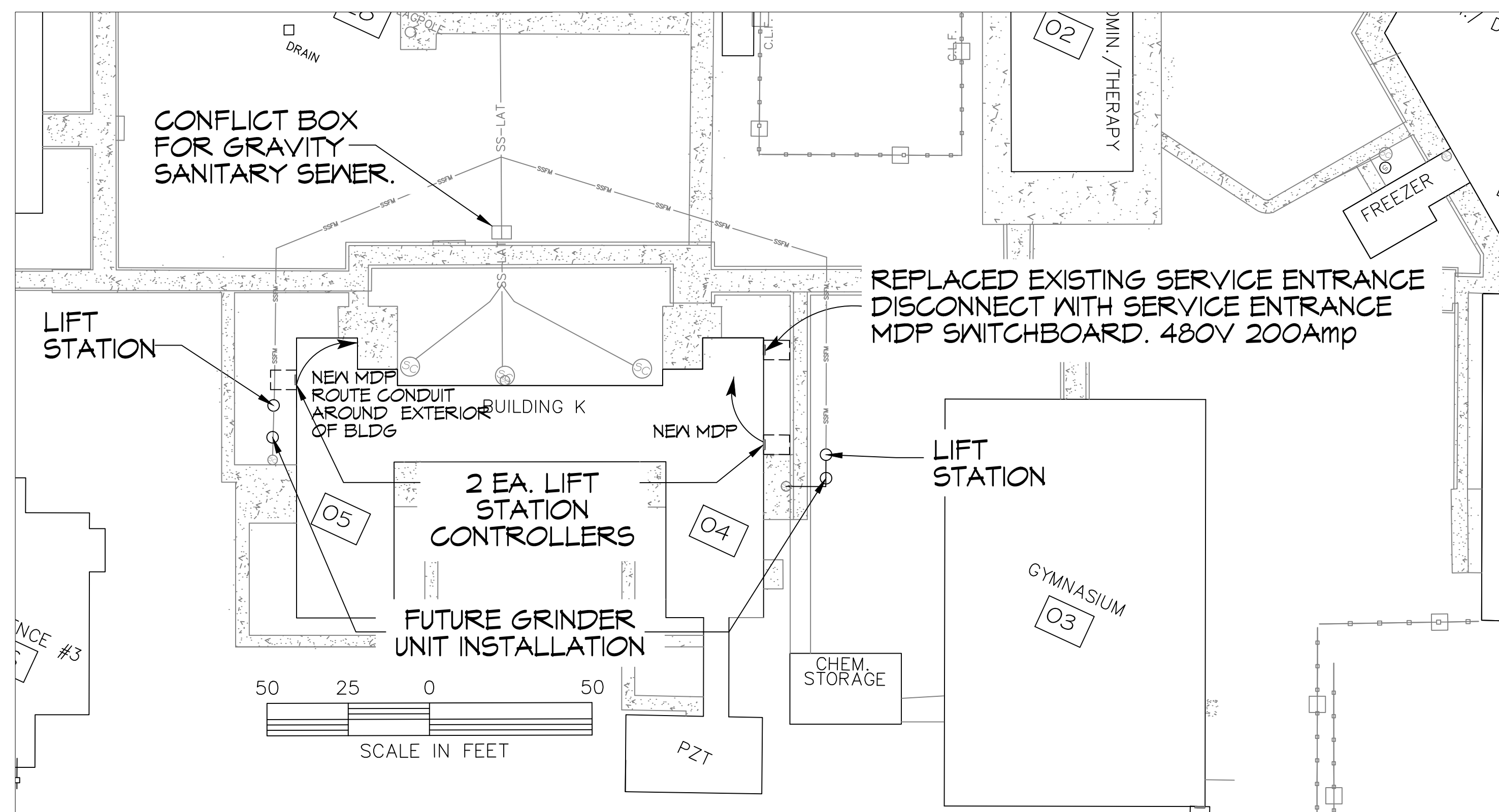
SHEET TITLE:  
**LIFT STATION DETAILS**

DRAWING NUMBER:  
**C3**



**LEGEND**

— SS — SS —	EXISTING SEWER LINE TO REMAIN
— SS-LAT —	NEW GRAVITY SEWER LATERAL
— SSFM —	NEW FORCE MAIN
⊙ 5C	NEW CLEAN-OUT
⊠ 09	BLDG NUMBER



**ELECTRICAL PLAN**  
SCALE: 1" = 30'

**ELECTRICAL NOTES**

- ALL WORK SHALL CONFORM TO THE LATEST EDITION OF THE NATIONAL ELECTRICAL CODE.
- ALL MATERIALS FURNISHED SHALL BE NEW AND SHALL BE U.L. LISTED.
- THE DRAWINGS INDICATE SIZE AND GENERAL LOCATION OF WORK. THE EXACT LOCATION OF LIFT STATION CONTROLS AND ROUTING OF CONDUIT, ETC. SHALL BE DETERMINED BY ACTUAL CONDITIONS IN THE FIELD.
- PRIOR TO BIDDING, CONTRACTOR SHALL VISIT THE JOB SITE AND FAMILIARIZE THEMSELVES WITH THE EXISTING CONDITIONS.
- ELECTRICAL CONTRACTOR SHALL COORDINATE HIS WORK WITH OTHER TRADES AND WITH OTHER CONTRACTORS WHOSE WORK MAY AFFECT THIS INSTALLATION.
- PERFORM TEST REQUIRED BY THE OWNER OR THE ENGINEER IN CONNECTION WITH THE OPERATION OF THE ELECTRICAL SYSTEM IN THE BUILDING.
- ALL TESTS SHALL BE MADE IN ACCORDANCE WITH THE LATEST STANDARD OF THE IEEE AND THE NATIONAL ELECTRICAL CODE.
- MINIMUM CONDUCTOR SIZE SHALL BE COPPER THHN #10, 600V INSULATION. MINIMUM SIZE CONDUIT SHALL BE 3/4" EMT FOR INTERIOR USE, AND 3/4" RIGID ALUMINUM FOR EXTERIOR USE. EXTERIOR FITTINGS SHALL BE CAST BOXES AND COVERS. INTERIOR FITTINGS SHALL BE CAST WHERE EXPOSED ON WALLS.
- FUSES SHALL BE ITC CLASS K5, 250 VOLT, 200,000 AMP INTER-RUPTING CAP.
- CONTRACTOR SHALL INSTALL WIRING AND OTHER CIRCUIT COMPONENTS TO MATCH EQUIPMENT ACTUALLY INSTALLED.
- BONDING AND GROUNDING SHALL BE IN ACCORDANCE WITH NEC.
- DRIVEN GROUND RODS WHICH DO NOT HAVE A RESISTANCE TO GROUND OF 10 OHMS OR LESS SHALL BE AUGMENTED UNTIL THE RESISTANCE TO GROUND IS 10 OHMS OR LESS. LIGHTNING ARRESTER LEADS TO BE ATTACHED TO THE MCB AS PER MOST RECENT NEC ARTICLE # 280. ALL GROUND RODS SHALL BE DRIVEN UNTIL TOP OF GROUND ROD IS A MINIMUM OF 12" BELOW GRADE.
- CONTROL PANEL ELECTRICAL SYSTEM SHALL BE COMPLETELY AND EFFECTIVELY GROUNDING AS REQUIRED BY NEC.
- ALL ELECTRICAL, MECHANICAL, AND PLUMBING PENETRATING FIRE PARTITIONS SHALL BE FIRE CAULKED. (PENETRATIONS THROUGH RATED CONSTRUCTION SHALL BE SEALED WITH A MATERIAL CAPABLE OF PREVENTING THE PASSAGE OF FLAMES AND HOT GASES WHEN TESTED IN ACCORDANCE WITH ASTM-E814.)
- ELECTRICAL CONTRACTOR TO MAKE ALL ELECTRICAL CONNECTIONS TO THE LIFT STATION.
- ALL CONTROL CIRCUIT WIRES SHALL BE TERMINATED WITH FORK TYPE CRIMP-ON CONNECTORS AND SHALL HAVE AN ADJACENT HEAT SHRINK NUMBER, CORRESPONDING EACH CONNECTOR WITH NUMBERS AS INDICATED ON THE SCHEMATIC.
- EACH DEVICE IN THE CONTROL CIRCUIT SHALL BE IDENTIFIED WITH THE PROPER CONTROL CIRCUIT ABBREVIATION AS SHOWN IN THE TABLE AND ON THE SCHEMATIC.
- FROM THE REAR SIDE OF THE DEAD FRONT HINGED PANEL, ALL WIRES SHALL BE NEATLY LACED TOGETHER INTO A HARNESS AND TERMINATED INTO A TERMINAL STRIP.
- WHEN CONNECTIONS ARE COMPLETE IN THE CONNECTION BOX, COAT THE TERMINAL BLOCKS AND WIRE ENDS WITH PROTECTIVE COMPOUND, NO-OXIDE OR EQUAL, TO PREVENT CORROSION.
- ALL ELECTRICAL CONDUIT ANCHORS IN RED BRICK SHALL BE SIMPSON STRONG TIE EPOXED OR EQUAL.

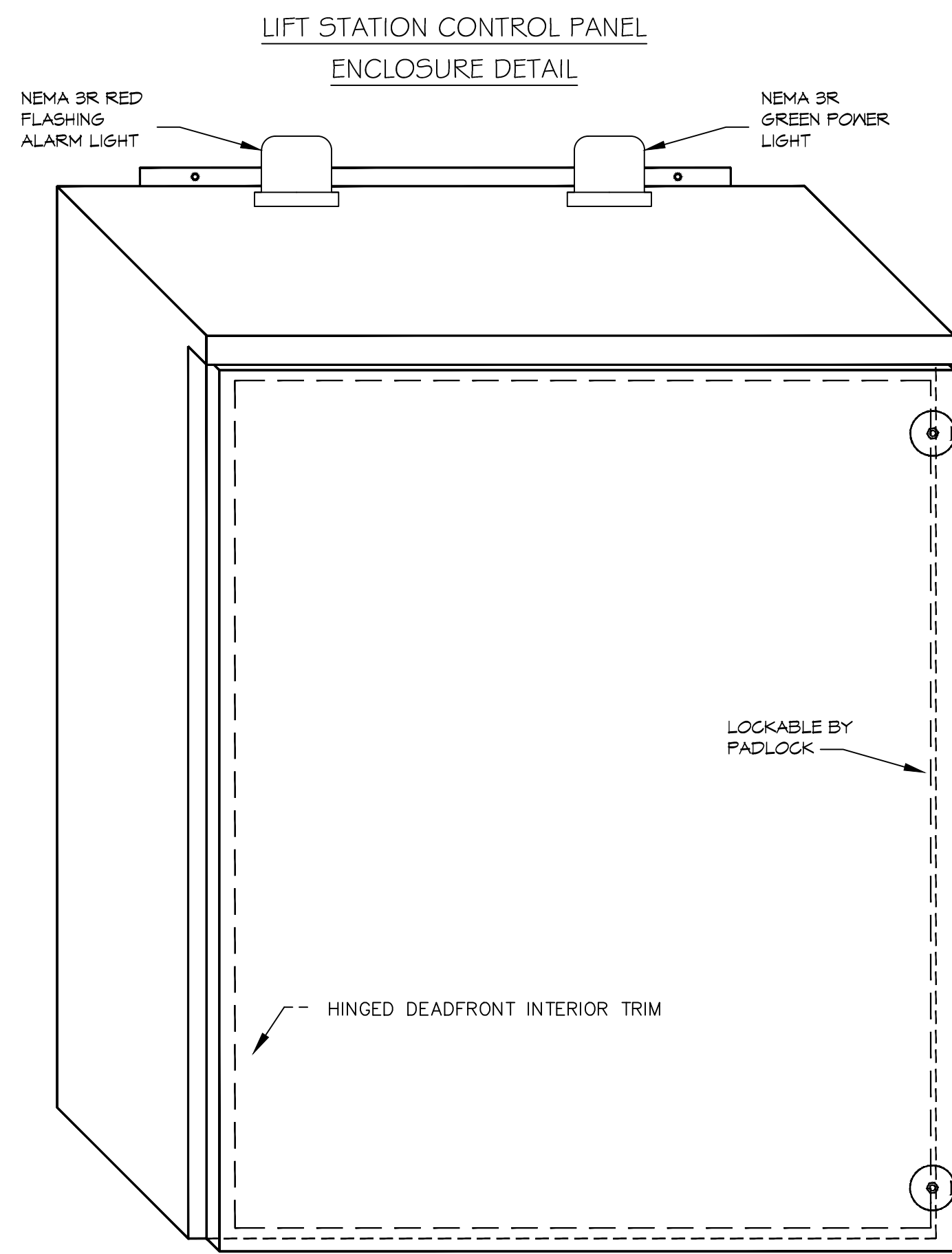
**AS-BUILT**



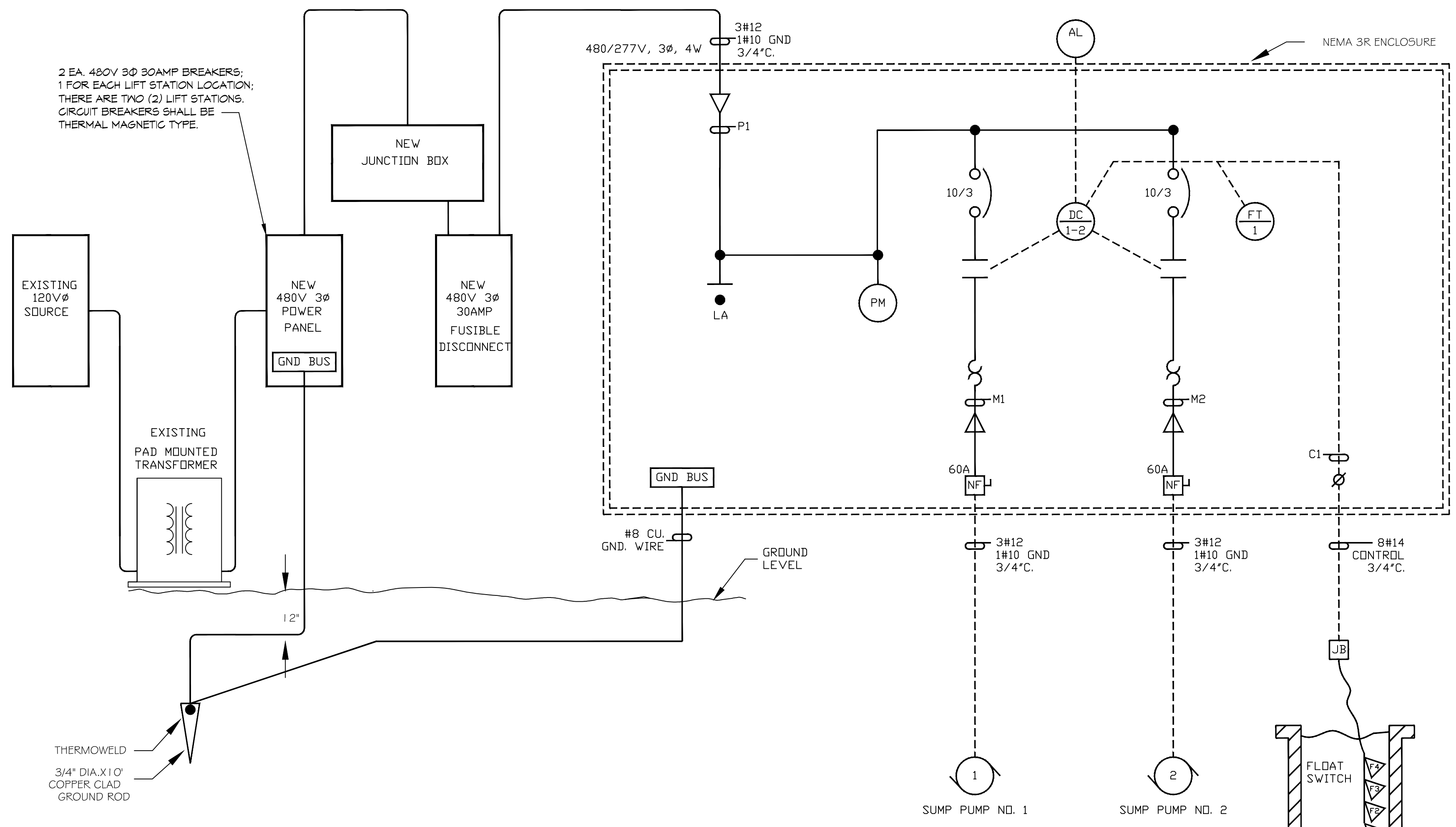
SEWER SYSTEM RENOVATION;  
PROJECT NUMBERS: 08-408-11-01 PART 1 & 08-408-04B-01, PART 20 & 01-107-06B-11, Part 07  
**BRIDGE CITY CENTER FOR YOUTH**  
3225 RIVER ROAD  
BRIDGE CITY, LA 70044  
JOB No: 21156 DATE: 9/26/2018  
DRAWN BY: CHECKED BY:

SHEET TITLE:  
**ELECTRICAL PLAN**

DRAWING NUMBER:  
**F1**



NEMA 3R ENCLOSURE  
(24"H x 24"W x 8"D)  
OR OTHER APPROVED PRE-DESIGNED  
MANUFACTURE ENCLOSURE

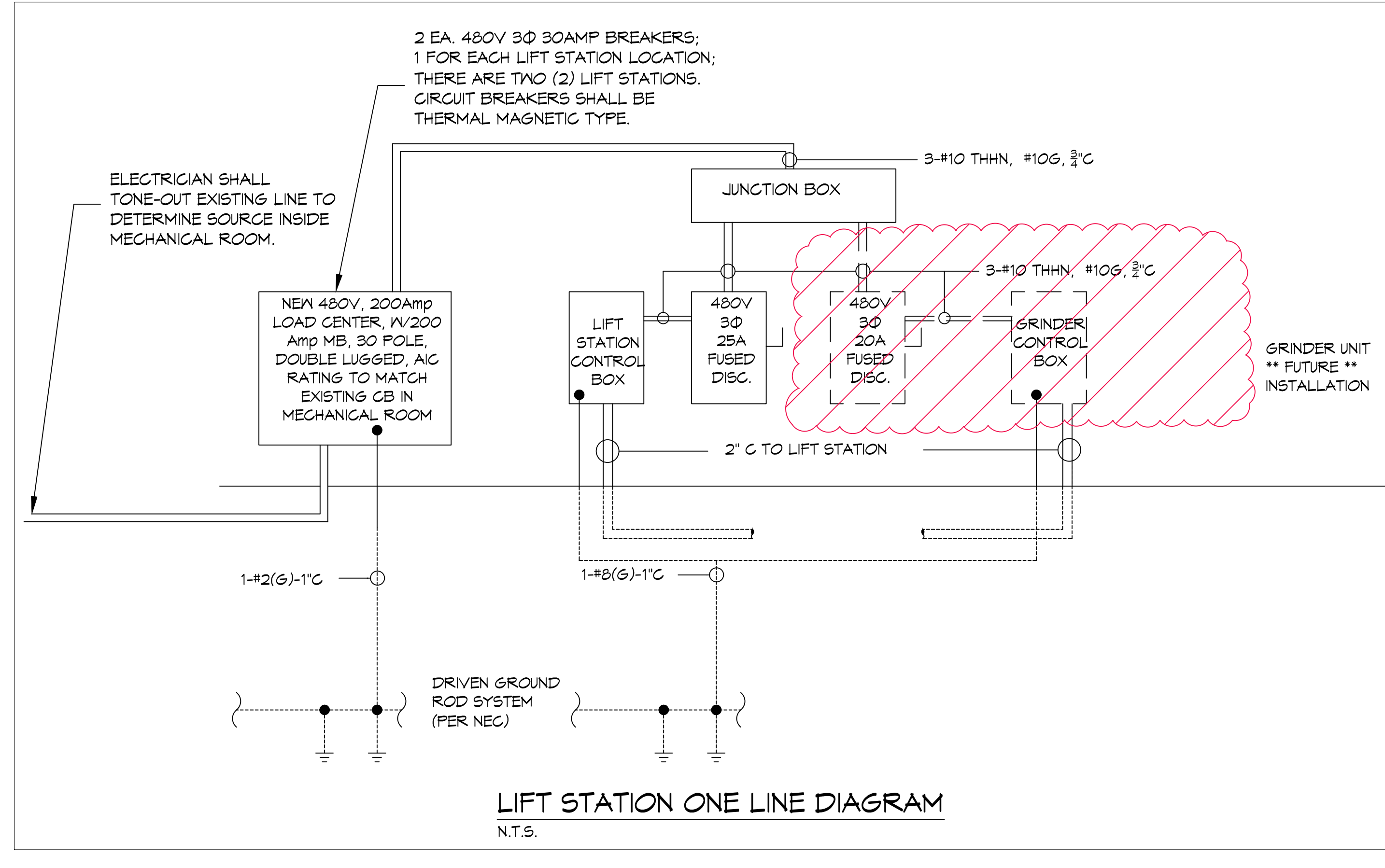
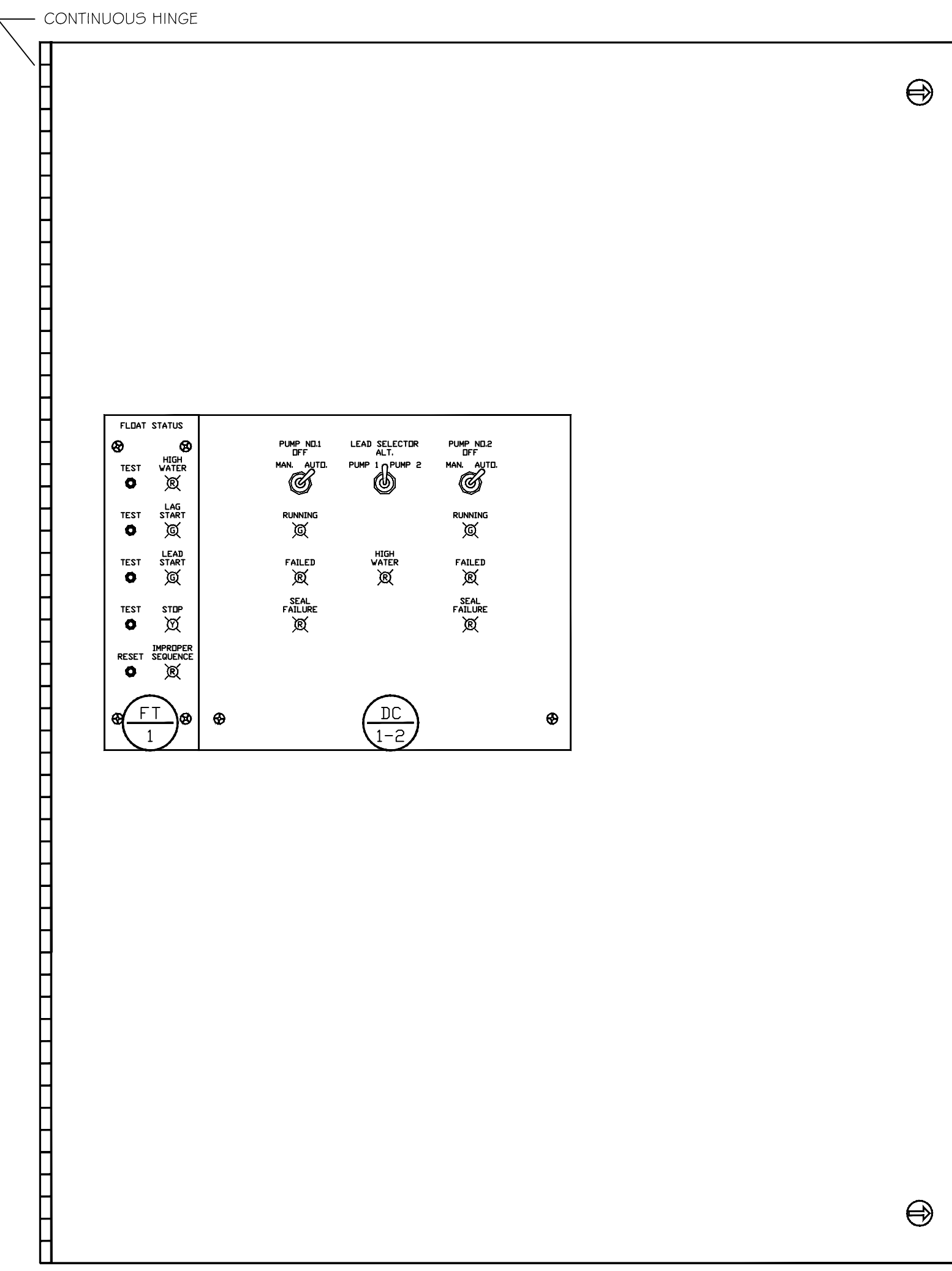
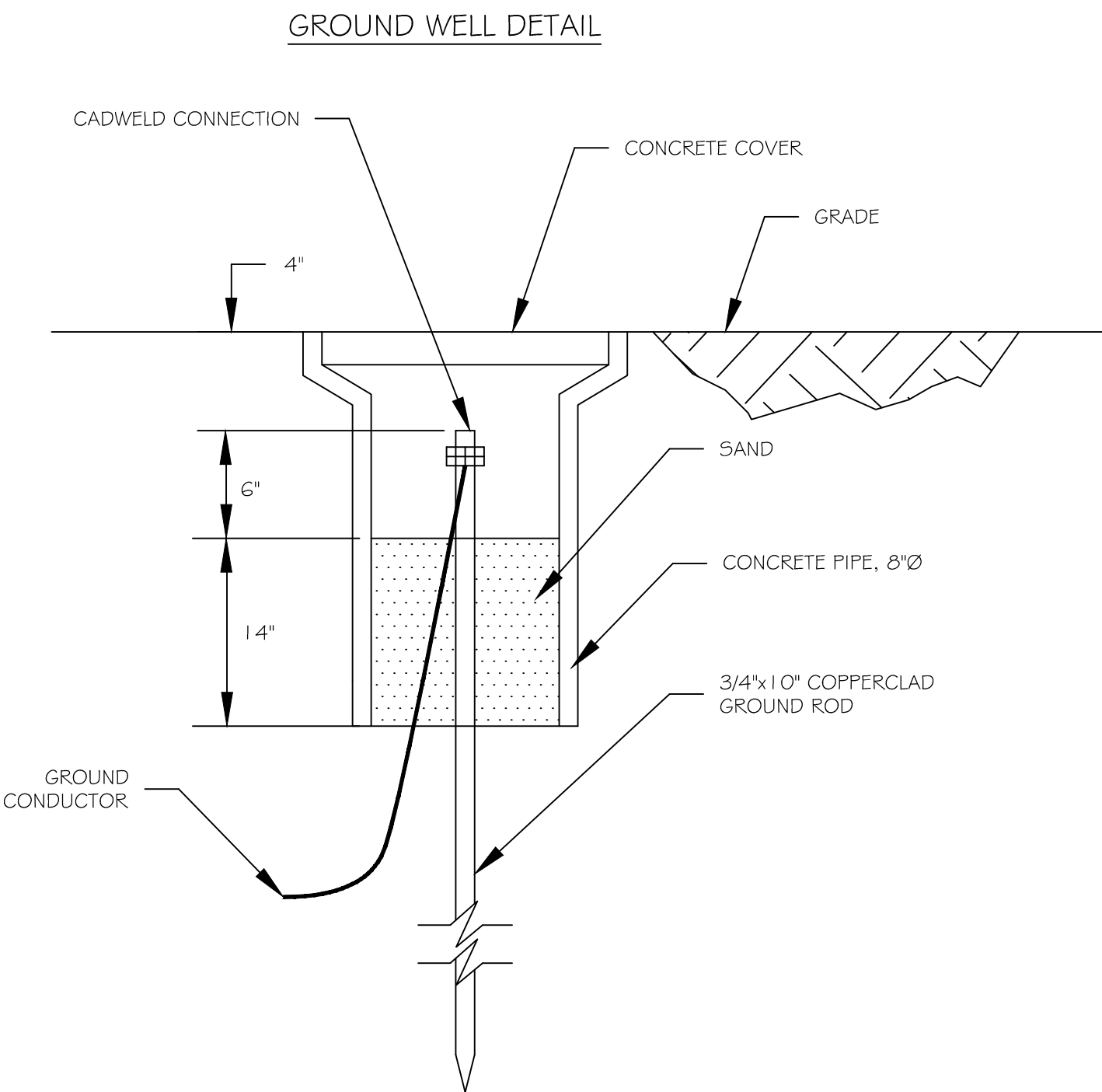


CONTROL PANEL  
DEADFRONT DETAIL

LIFT STATION CONTROL PANEL  
ONE LINE POWER DIAGRAM AND  
PROCESS AND INSTRUMENTATION DIAGRAM (P&ID)

LEGEND

	LIGHTNING ARRESTOR
	PHASE MONITOR
	DUPLEX CONTROLLER
	FLOAT TEST
	ALARM LIGHT



LIFT STATION ONE LINE DIAGRAM  
N.T.S.