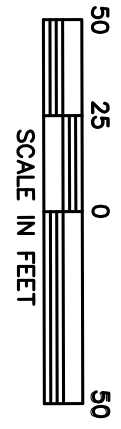


VICINITY MAP
NOT TO SCALE

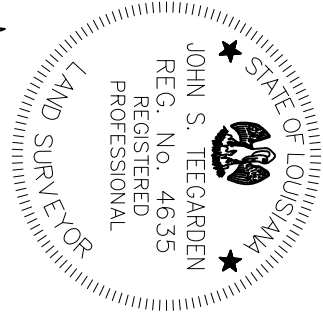
A SEWER SURVEY OF BRIDGE CITY CENTER FOR YOUTH
PORTION OF FAIRFIELD PLANTATION T 13 S, R 23 E,
SECTIONS 2 AND 3; WITHIN JEFFERSON PARISH, LA.



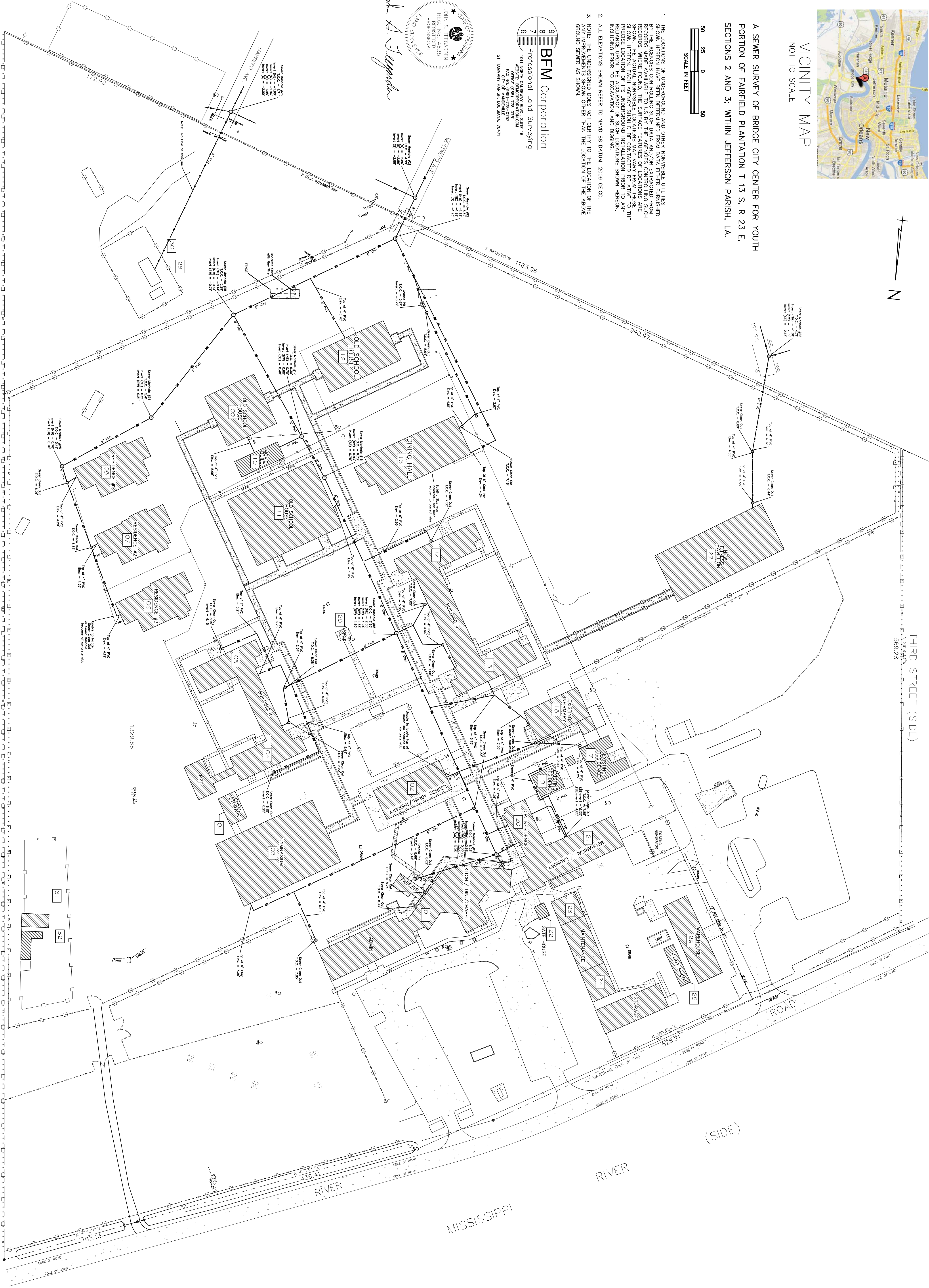
1. THE LOCATIONS OF UNDERGROUND AND OTHER NONVISIBLE UTILITIES SHOWN HEREON HAVE BEEN DETERMINED FROM DATA EITHER FURNISHED BY THE AGENCIES CONTROLLING SUCH DATA AND/OR EXTRACTED FROM RECORDS WHERE FOUND. THE SURFACE FEATURES OF LOCATIONS ARE SHOWN. THE ACTUAL NONVISIBLE LOCATIONS MAY VARY FROM THOSE SHOWN. THE PRESENT REVISION OF THIS UNDERGROUND SURVEY IS TO BE RELIANCE UPON TO THE ACCURACY OF SUCH LOCATIONS SHOWN HEREON, INCLUDING PRIOR TO EXCAVATION AND DIGGING.
2. ALL ELEVATIONS SHOWN REFER TO NAVD 88 DATUM, 2009 GEOID.
3. NOTE: THE UNDESIGNED PEGS NOT CORRESPOND TO THE LOCATION OF THE ABOVE ANY IMPROVEMENTS SHOWN OTHER THAN THE LOCATION OF THE ABOVE GROUND SEWER AS SHOWN.

BFM Corporation
Professional Land Surveying

1011 NORTH CALDWAY BLVD., SUITE 16
FAYETTE, LOUISIANA 70502
PHONE: (985) 778-0732
FAX: (985) 778-0732
WEB: (985) 778-0732
ST. TAMMANY PARISH, LOUISIANA, 70471



John S. Meckler



SEWER SURVEY BY BFM CORP.
SCALE: 1" = 50'



SHEET No: 02 OF 07
C-1

SEWER SURVEY

REVISIONS		DATE
#	DESCRIPTION	

SEWER SYSTEM RENOVATION
BRIDGE CITY CENTER FOR YOUTH
PROJ NO. 08-403-11-01 PART 1
3225 RIVER ROAD
BRIDGE CITY, LA 70094

JOB No: 2156 DATE: 02-25-2013

DAMMON ENGINEERING, INC.
Architects & Engineers

CHIEF ENGINEER: EMMETT DAMMON, P.E.
CHIEF ARCHITECT: KEVIN KINCHEN
554 OLD SPANISH TRAIL
SLIDELL, LA 70458

dammonengineering.com
dammoneng@bellsouth.net
PHONE: 985-649-5832
FAX: 985-641-5990