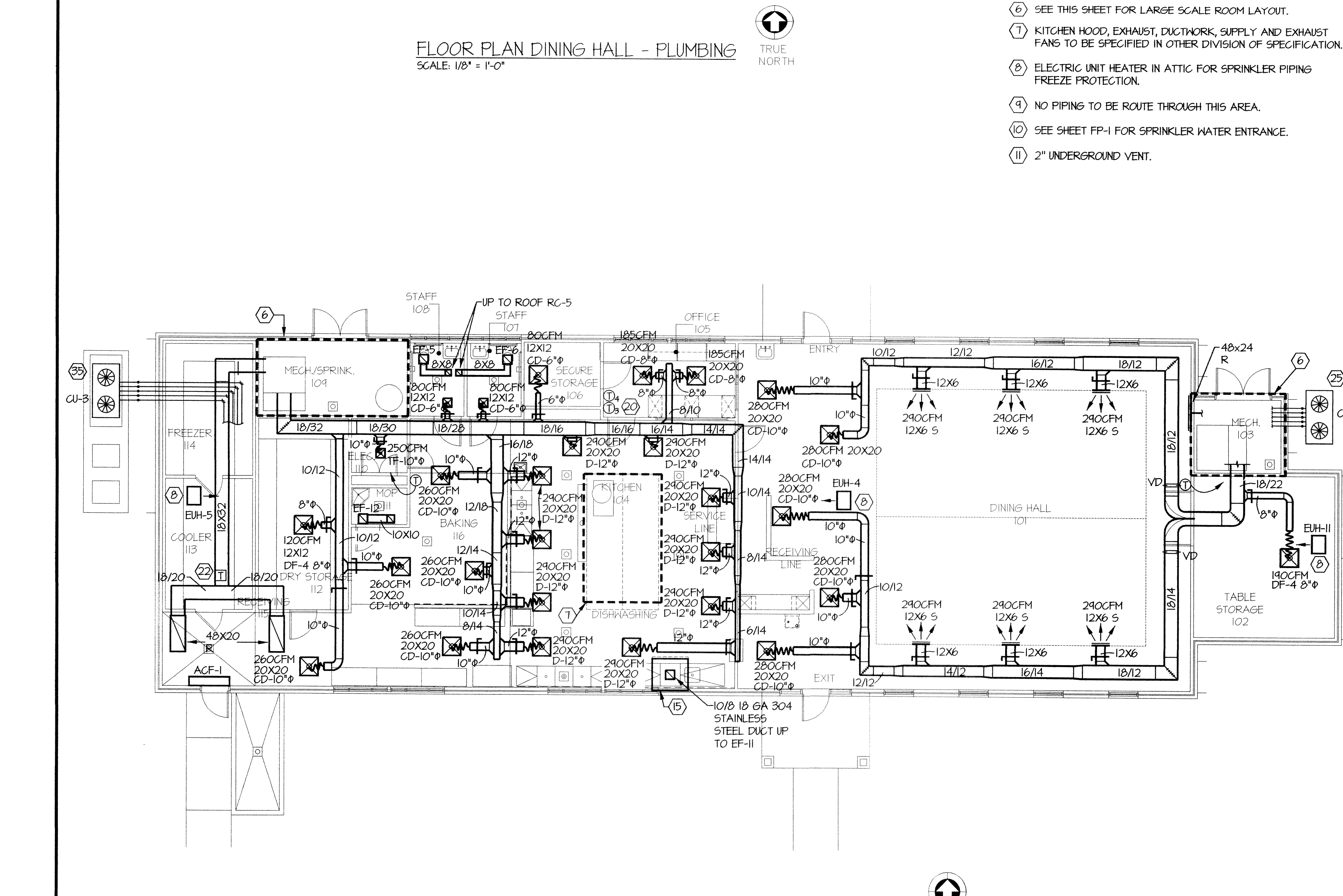


FLOOR PLAN DINING HALL - PLUMBING
SCALE: 1/8" = 1'-0"

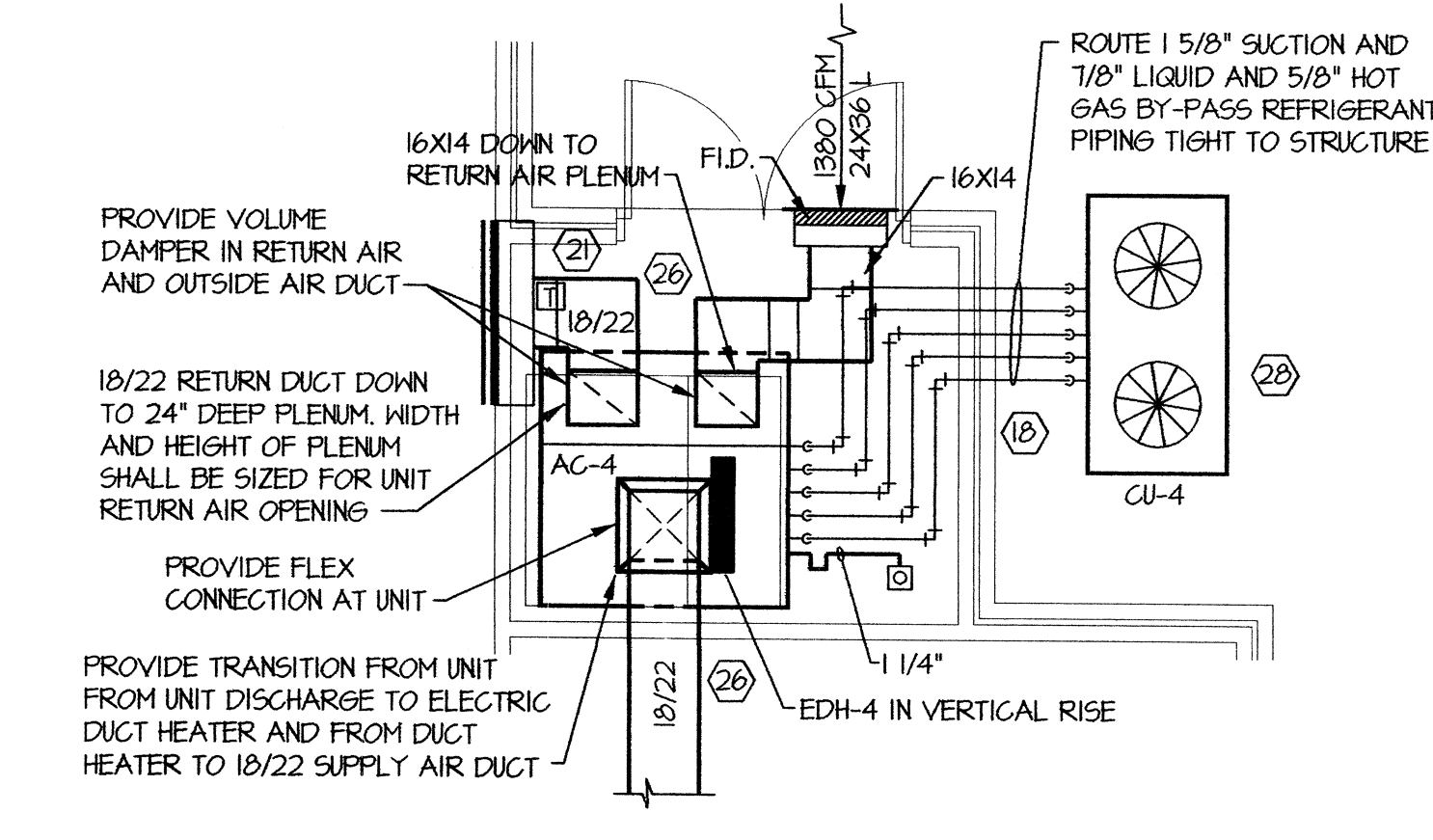
- SPECIFIC NOTES THIS SHEET:**
- ① 6" FIRE AND DOMESTIC WATER PIPING. SEE CIVIL DRAWINGS FOR CONTINUATION.
 - ② SEE BUILDING WATER ENTRANCE DETAIL ON SHEET M-12.
 - ③ 500 GAL. GREASE TRAP. SEE DETAIL ON SHEET M-12.
 - ④ WASTE PIPING. SEE CIVIL DRAWINGS FOR CONTINUATION.
 - ⑤ NEW GAS PIPING. SEE SHEET M-1 FOR CONTINUATION.
 - ⑥ SEE THIS SHEET FOR LARGE SCALE ROOM LAYOUT.
 - ⑦ KITCHEN HOOD, EXHAUST, DUCTWORK, SUPPLY AND EXHAUST FANS TO BE SPECIFIED IN OTHER DIVISION OF SPECIFICATION.
 - ⑧ ELECTRIC UNIT HEATER IN ATTIC FOR SPRINKLER PIPING FREEZE PROTECTION.
 - ⑨ NO PIPING TO BE ROUTE THROUGH THIS AREA.
 - ⑩ SEE SHEET FP-1 FOR SPRINKLER WATER ENTRANCE.
 - ⑪ 2" UNDERGROUND VENT.

- SPECIFIC NOTES THIS SHEET:**
- ⑪ SEE GAS WATER HEATER DETAIL ON SHEET M-12 FOR HOT WATER MIXING VALVE DETAIL.
 - ⑫ UNDERGROUND GAS PIPING. SEE SPECIFICATIONS.
 - ⑬ GAS PIPING UP FROM UNDERGROUND. PROVIDE GAS VALVE IN RISER. ROUTE GAS PIPING ON EXTERIOR OF BUILDING.
 - ⑭ GAS PIPING ROUTED BELOW AND TIGHT TO CEILING.
 - ⑮ DISHWASHER EXHAUST HOOD. SEE DETAIL ON SHEET M-11.
 - ⑯ TRAP PRIMER IN WALL WITH ACCESS PANEL. SEE DETAIL ON SHEET M-12.
 - ⑰ 1/2" PIPING UNDERGROUND FROM TRAP TO FLOOR DRAIN (TYPICAL).
 - ⑱ REFRIGERANT AND DRAIN PIPING SHALL BE ROUTED AND INSTALLED AS NOT TO BLOCK OR CONFLICT WITH AC UNIT ACCESS PANELS.
 - ⑲ CLEAN OUT IN CAST IRON CLEAN OUT BOX. SEE DETAIL ON SHEET M-12.
 - ⑳ AC-3 AND 4 UNIT CONTROLS.
 - ㉑ AC-4 TEMPERATURE SENSOR INSTALLED IN RETURN AIR DUCT.
 - ㉒ AC-3 TEMPERATURE SENSOR INSTALLED IN RETURN AIR DUCT.
 - ㉓ GAS PIPE RISER TO ABOVE GRADE. SEE GAS RISER SHEET M-4.
 - ㉔ HOT WATER MIXING VALVE. SEE WATER HEATER DETAIL ON SHEET M-12 AND RISER DETAIL ON SHEET M-4.
 - ㉕ PROVIDE 2"x6" TRENCH DRAIN. SEE SPECIFICATIONS FOR REQUIREMENTS.
 - ㉖ PROVIDE INTERNAL DUCT LINER IN FIRST 10' OF SUPPLY AND RETURN AIR DUCT. SEE SPECIFICATIONS FOR INSULATOR REQUIREMENTS.
 - ㉗ PROVIDE 2-18x36 LOUVERS, ONE AT 12" AFF AND ONE AT 12" BELOW CEILING.
 - ㉘ CONDENSING UNIT AND REFRIGERANT PIPING. COORDINATE EXACT LOCATION OF CONDENSING UNIT AND ROUTING OF REFRIGERANT PIPING WITH ARCHITECT PRIOR TO ROUGH-IN INSTALLATION.

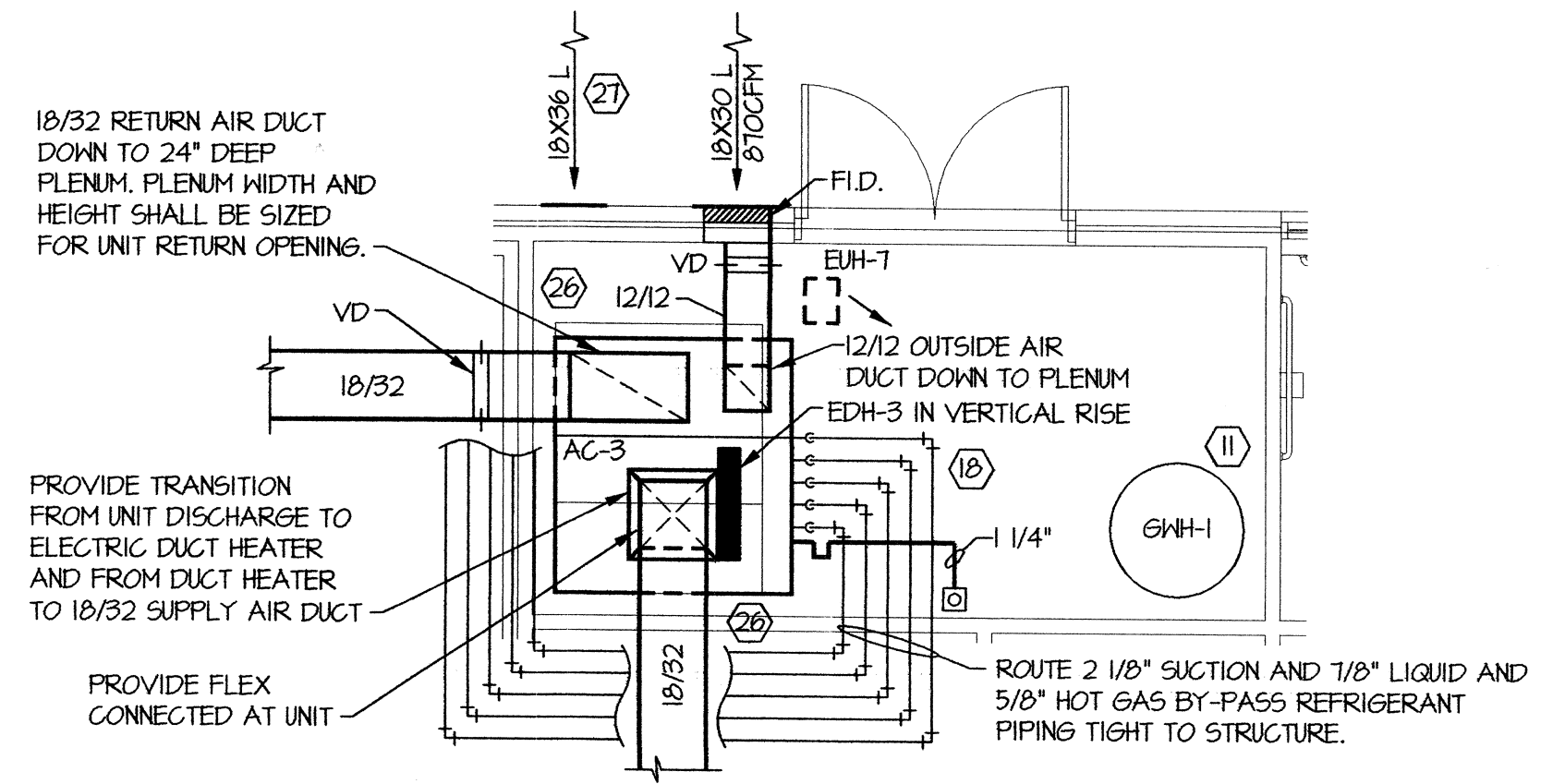
- GENERAL NOTES THIS SHEET:**
- A. ALL WASTE PIPING SHOWN SHALL BE RUN BELOW SLAB UNLESS NOTED OTHERWISE.
 - B. HANG ALL UNDERGROUND PIPING FROM SLAB. SEE DETAIL ON SHEET M-12.
 - C. ALL HW, GN, AND VENT PIPING SHALL BE RUN ABOVE CEILING UNLESS NOTED OTHERWISE.
 - D. SEE PLUMBING RISER DIAGRAM FOR PIPE SIZING NOT SHOWN ON PLANS.
 - E. ENTIRE BUILDING SHALL BE PROTECTED WITH A FULLY AUTOMATIC SPRINKLER SYSTEM. SEE SHEET FP-1.
 - F. COORDINATE EXACT ROUTING OF ALL PIPING SO AS NOT TO CONFLICT WITH OTHER TRADES INCLUDING DUCTWORK AND ELECTRICAL.
 - G. DUCT SIZES SHOWN ARE FREE AREA SIZES. SEE SPECIFICATIONS FOR DUCT MATERIALS AND INSULATION REQUIRED. INSULATE DIFFUSER BACK PANS. SEE SHEET M-11 FOR DETAILS. CONTRACTOR SHALL INTERNALLY LINE AND EXTERNAL RAP FIRST 10' OF SUPPLY AND RETURN AIR DUCTWORK.
 - H. COORDINATE EXACT ROUTING OF ALL DUCTWORK SO AS NOT TO CONFLICT WITH OTHER TRADES. COORDINATE EXACT LOCATION OF ALL CEILING GRILLES WITH LIGHTS, SPRINKLER, ETC. ALL DUCTWORK SHALL BE ROUTED THROUGH TRUSS SYSTEM. COORDINATE ALL DUCT RUNS WITH TRUSS MANUFACTURER PRIOR TO SUBMITTING DUCT WORK SHOP DRAWINGS. CONTRACTOR IS RESPONSIBLE FOR ALL COORDINATION OF DUCT ROUTING THROUGH TRUSS SYSTEM AND SHALL COORDINATE, REVIEW THE ARCHITECTURAL AND STRUCTURAL DRAWINGS.
 - I. CONTRACTOR IS CAUTIONED NOT TO FABRICATE OR INSTALL ANY DUCTWORK UNTIL DUCTWORK SHOP DRAWINGS HAVE BEEN SUBMITTED AND APPROVED BY ENGINEER. REPRODUCTION OF CONTRACT DOCUMENTS NOT ACCEPTABLE.
 - J. FLEX DUCT RUN OUTS TO SUPPLY AIR CEILING DIFFUSERS SHALL MATCH DIFFUSER NECK SIZES. MAXIMUM FLEX DUCT RUN OUTS SHALL BE LIMITED TO 5'-0". SUBSTITUTE RIGID METAL ROUND DUCTWORK IN LIEU THEREOF.
 - K. DUCT INSULATION SHALL BE MINIMUM R-5 FOR DUCTWORK ROUTED ABOVE CEILING WITHIN BUILDING ENVELOPE. DUCT INSULATION OUTSIDE THE BUILDING ENVELOPE SHALL BE MINIMUM R-8.
 - L. FLEXIBLE DUCT CONNECTIONS SHALL BE MECHANICALLY FASTENED AND SEALED TO PREVENT LEAKAGE.
 - M. PROVIDE MANUAL VOLUME DAMPER AT ALL UNIT OUTSIDE AIR INTAKES. PROVIDE VOLUME DAMPERS AT ALL TAPS INTO MAIN DUCT RUNS.
 - N. ALL SEAMS AND JOINTS ON METAL DUCT SHALL BE SEALED USING AN ELASTOMERIC TAPE. SEE SPECIFICATIONS FOR REQUIREMENTS.
 - O. HVAC SYSTEM SHALL BE CONTROLLED BY PROGRAMMABLE THERMOSTAT. SEE SPECIFICATION FOR REQUIREMENTS.
 - P. PROVIDE FIRE DAMPERS IN ALL RATED PARTITIONING WHERE DUCTWORK PENETRATES. SEE SHEET M-11 FOR INSTALLATION DETAILS.
 - Q. SEE SHEET M-11 FOR ALL DUCT BRANCH CONNECTION REQUIREMENTS.
 - R. SIZE ALL REFRIGERANT PIPING PER MANUFACTURER RECOMMENDATION FOR INSTALLATION REQUIREMENTS. INSULATE SUCTION WITH 3/4" THICK CLOSED CELL INSULATION. SEE SPECIFICATION FOR REQUIREMENTS.
 - S. CONTRACTOR SHALL SEAL ALL OPEN ENDS OF DUCTWORK, INCLUDING INSTALLED AND STORED DUCT ON SITE, AS TO NOT ALLOW CONSTRUCTION DUST AND DEBRIS TO GET INTO DUCTWORK.
 - T. INTERLOCK AC-3 AND 4 TO OPERATE WHEN KITCHEN AND DISHWASHER HOODS ARE ENERGIZED.
 - U. CONTRACTOR SHALL SUBMIT FOR REVIEW A DETAILED 1/4" SCALE LAYOUT OF ALL MECHANICAL EQUIPMENT ROOMS, DRAWING SHALL SHOW ALL EQUIPMENT, PIPING AND DUCTWORK. EACH TRADE SHALL COORDINATE ALL WORK PRIOR TO SUBMISSION AND INSTALLATION OF EQUIPMENT, PIPING AND DUCTWORK.
 - V. SEE SHEET M-4 FOR KITCHEN EQUIPMENT SCHEDULE.



FLOOR PLAN DINING HALL - HVAC
SCALE: 1/8" = 1'-0"



LARGE SCALE MECHANICAL ROOM 103 EQUIPMENT LAYOUT
SCALE: 1/4" = 1'-0"



LARGE SCALE MECHANICAL ROOM 109 EQUIPMENT LAYOUT
SCALE: 1/4" = 1'-0"

BURGDALH & GRAVES
A.I.A. ARCHITECTS
A PROFESSIONAL CORPORATION • PHONE (504) 366-4453

COMMUNITY BASED PROGRAM
JUVENILE JUSTICE IMPROVEMENTS - REGION ONE
BRIDGE CITY CORRECTIONAL CENTER FOR YOUTH EXPANSION
BRIDGE CITY, LOUISIANA
PROJECT NO.: 08-403-04-02, PART 1
STATE I.D.: NEW SITE CODE: 1-26-004

DATE: 02-03-06
DRAWN BY: LAR
REVISIONS:

M-2
SHEET 39 OF 62